

AIRCLEAN

YOUR AIR FILTER MANUFACTURER

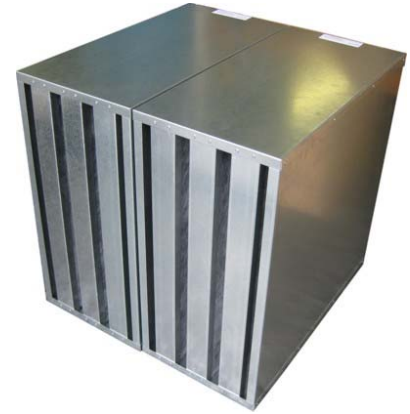
Bays 2 & 3 Pattenden Lane, Marden,
Tonbridge, Kent, TN12 9QS

Tel:01622 832777
Fax:01622 832507

sales@airclean.co.uk www.airclean.co.uk

Metal Cased Discarbs

The metal cased 'Discarb' cells have the highest carbon loading in our range, and have standard or heavy-duty carbon panels permanently sealed into a galvanised sheet steel casing. This construction gives a very strong unit capable of handling large air volumes or where conditions dictate, increased contact time. The advantage of this unit is that with panels sealed in, there is no possibility of air leakage. Also, these units can be manufactured to almost any reasonable size, the limiting factors being the overall weight for handling purposes and the size of individual panels. When the unit has finished its useful life it is discarded and replaced with a complete new cell.



| Standard Duty Cells | | | | | | | |
|---------------------|-----------------|-----------|--------|---------|-------------------|------|----------|
| Nominal Size | Actual Size mm | Number of | Carb. | Discarb | Airflow | | Pressure |
| W x H x L | W x H x L | Panels | Weight | Weight | m ³ /s | cfm | Pa |
| 12" x 12" x 12" | 292 x 292 x 292 | 6 | 5 kg | 9 kg | 0.10 | 212 | 75 |
| 12" x 12" x 18" | 292 x 292 x 445 | 6 | 8 kg | 14 kg | 0.15 | 318 | 95 |
| 12" x 12" x 24" | 292 x 292 x 597 | 6 | 10 kg | 18 kg | 0.22 | 466 | 140 |
| 18" x 18" x 12" | 445 x 445 x 292 | 8 | 10 kg | 17 kg | 0.21 | 445 | 55 |
| 18" x 18" x 18" | 445 x 445 x 445 | 8 | 15 kg | 25 kg | 0.31 | 657 | 70 |
| 18" x 18" x 24" | 445 x 445 x 597 | 8 | 21 kg | 33 kg | 0.41 | 868 | 105 |
| 24" x 24" x 12" | 597 x 597 x 292 | 12 | 20 kg | 31 kg | 0.41 | 868 | 70 |
| 24" x 24" x 18" | 597 x 597 x 445 | 12 | 31 kg | 45 kg | 0.61 | 1292 | 90 |
| 24" x 24" x 24" | 597 x 597 x 597 | 12 | 42 kg | 59 kg | 0.81 | 1716 | 130 |
| 12" x 24" x 24" | 298 x 597 x 597 | 6 | 21 kg | 35 kg | 0.40 | 847 | 130 |

| Extra Duty Cells | | | | | | | |
|------------------|-----------------|--------|--------|---------|-------------------|------|----------|
| Nominal Size | Actual Size | No. of | Carb. | Discarb | Airflow | | Pressure |
| W x H x L | W x H x L | Panels | weight | weight | m ³ /s | cfm | Pa |
| 12" x 12" x 12" | 292 x 292 x 292 | 6 | 6 kg | 10 kg | 0.13 | 275 | 125 |
| 12" x 12" x 18" | 292 x 292 x 445 | 6 | 9 kg | 15 kg | 0.20 | 424 | 175 |
| 12" x 12" x 24" | 292 x 292 x 597 | 6 | 12 kg | 20 kg | 0.27 | 572 | 250 |
| 18" x 18" x 12" | 445 x 445 x 292 | 8 | 12 kg | 19 kg | 0.30 | 635 | 95 |
| 18" x 18" x 18" | 445 x 445 x 445 | 8 | 19 kg | 28 kg | 0.41 | 868 | 125 |
| 18" x 18" x 24" | 445 x 445 x 597 | 8 | 25 kg | 37 kg | 0.54 | 1144 | 185 |
| 24" x 24" x 12" | 597 x 597 x 292 | 12 | 25 kg | 35 kg | 0.54 | 1144 | 125 |
| 24" x 24" x 18" | 597 x 597 x 445 | 12 | 38 kg | 52 kg | 0.80 | 1694 | 150 |
| 24" x 24" x 24" | 597 x 597 x 597 | 12 | 51 kg | 68 kg | 1.06 | 2245 | 225 |
| 12" x 24" x 24" | 298 x 597 x 597 | 6 | 26 kg | 46 kg | 0.53 | 1122 | 225 |

The company reserves the right to change the specifications without notice. E & OE.

Code AC6/2a Ref 03/13

AIRCLEAN

YOUR AIR FILTER MANUFACTURER

Bays 2 & 3 Pattenden Lane, Marden,
Tonbridge, Kent, TN12 9QS

Tel:01622 832777
Fax:01622 832507

sales@airclean.co.uk www.airclean.co.uk

Technical

The capacities shown are based on a dwell time of 0.1 seconds .

For contact times of 0.3 seconds, reduce rated airflow to 1/3rd, pressure drop will also reduce to 1/3rd.

Max Temperature 40 Deg C

Max Humidity 80% RH

Non-standard sizes

Other sizes are available to suit individual requirements. Our Technical Department will be pleased to advise.

Holding Frames and Casings

For Activated Carbon housing solutions Airclean manufacture a range of Side Withdrawal Housings for industrial applications (See Section 8), and the Kitchavent Range specifically for commercial kitchen extract grease, smoke and odour control (See Section 11.).

Both these systems are heavy duty fully welded painted housings, and incorporate a specially designed clamping and sealing system to ensure minimal air bypass of the carbon filters, ensuring maximum efficiencies.

