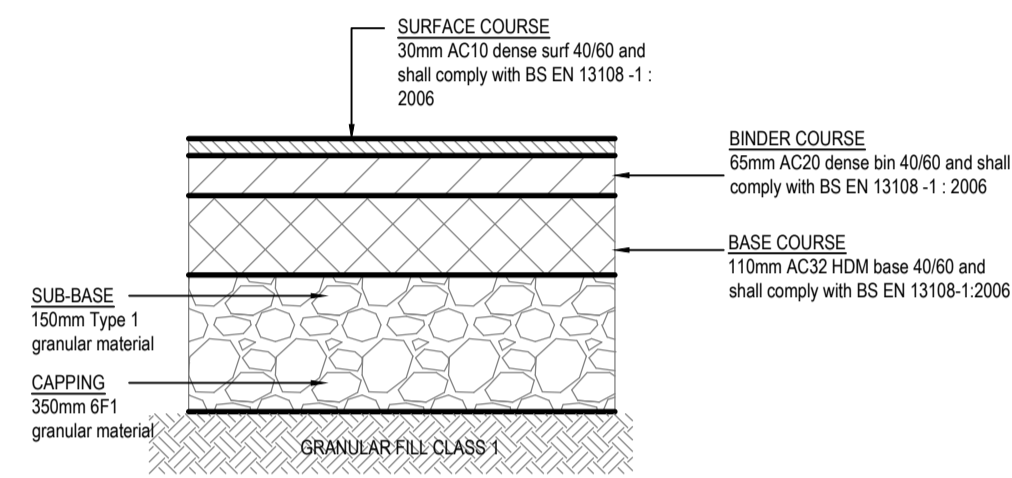


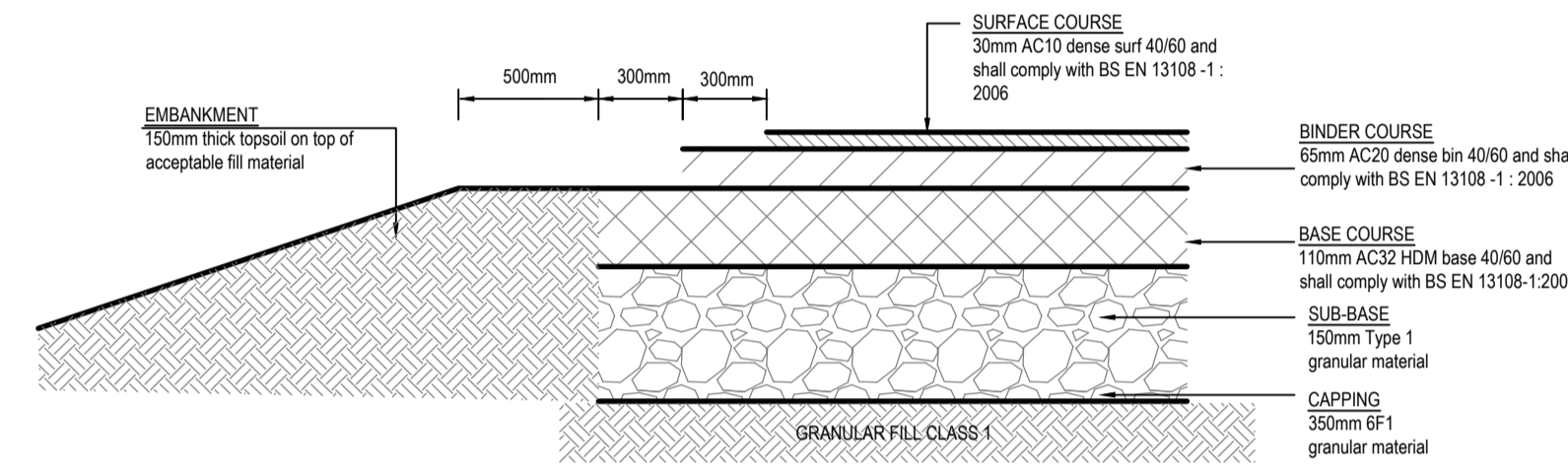
TYPICAL CROSS SECTION
SCALE 1:20

NOTES
1. Refer to drawing 16156-700 for pavement and kerbing layout

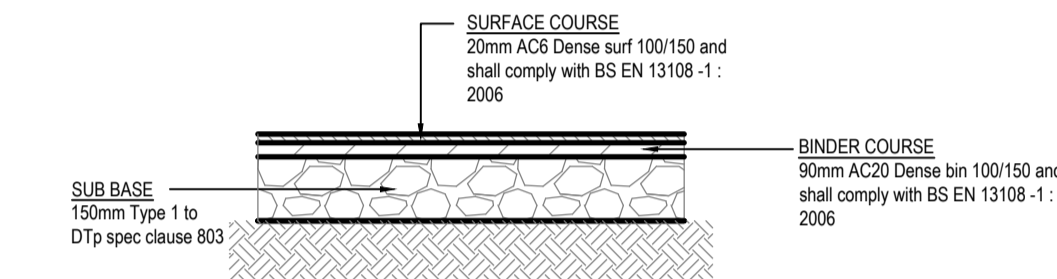


CARRIAGEWAY CONSTRUCTION
SCALE 1:20

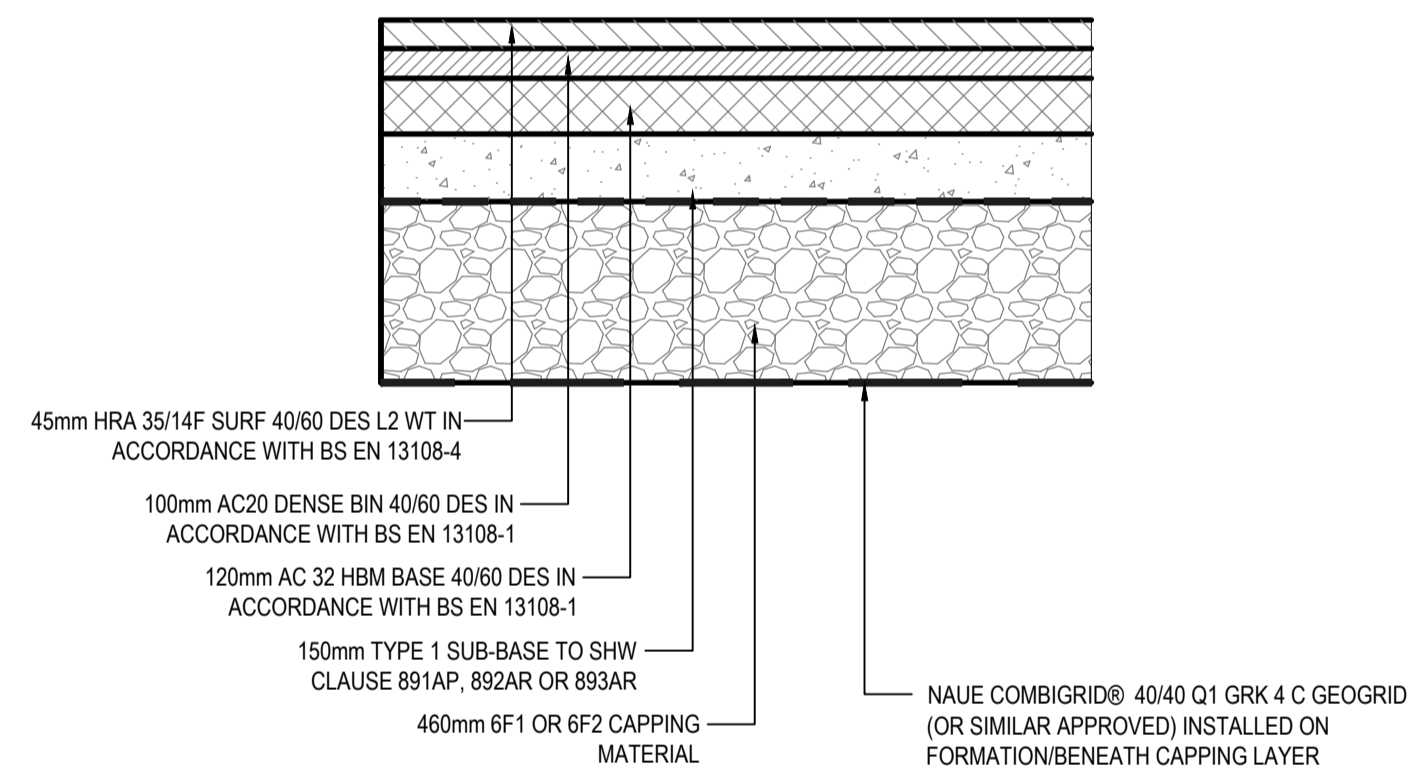
*Based on in-situ CBR testing 2-5% CBR



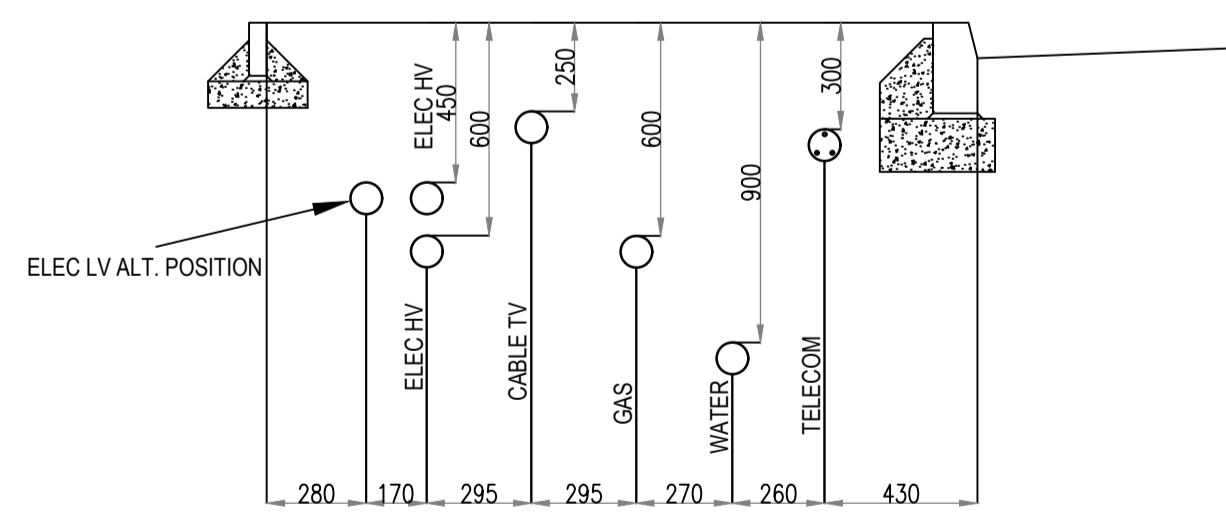
CARRIAGEWAY TIE-IN DETAIL
SCALE 1:20



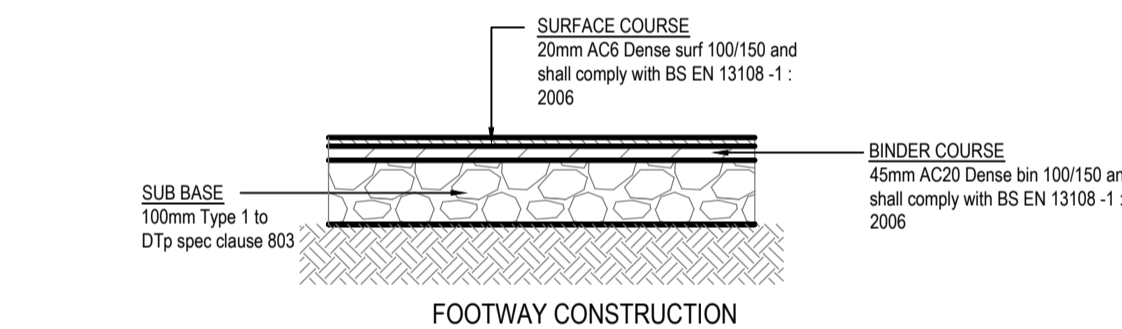
VEHICLE CROSSOVER CONSTRUCTION
SCALE 1:20



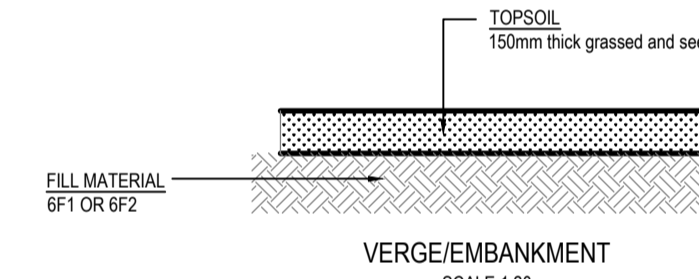
SECTION 278 FULL DEPTH CONSTRUCTION
INCORPORATING GEOGRID BASE REINFORCEMENT
SCALE 1:10



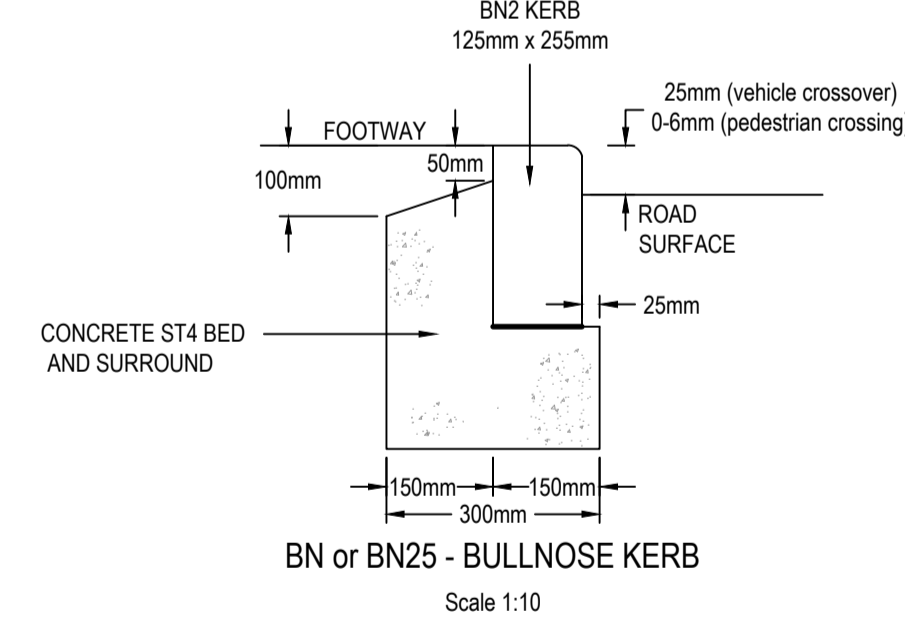
UTILITY SERVICES
SCALE 1:10



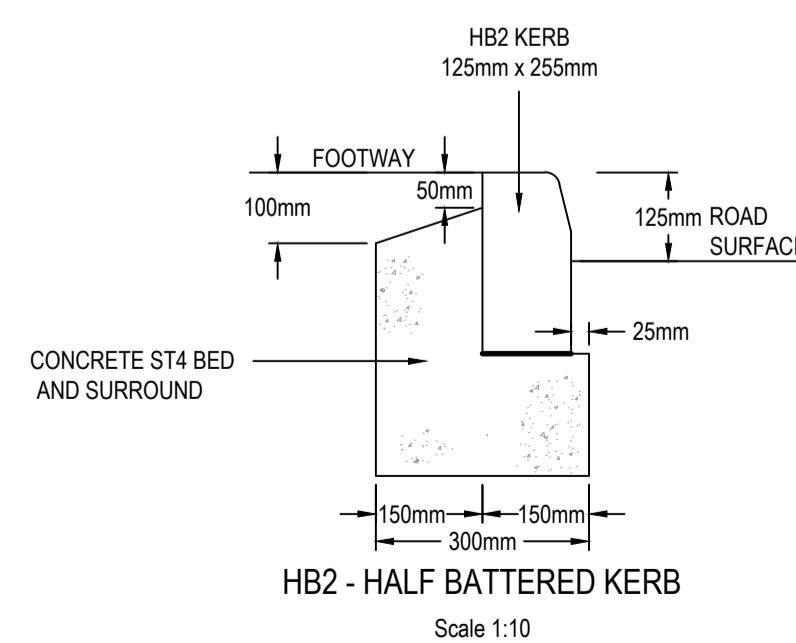
FOOTWAY CONSTRUCTION
SCALE 1:20



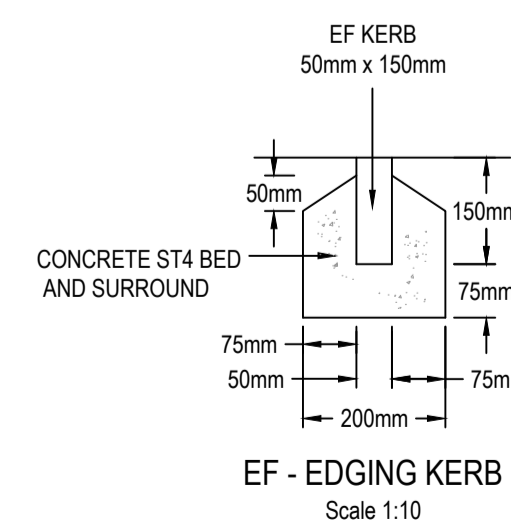
VERGE/EMBANKMENT
SCALE 1:20



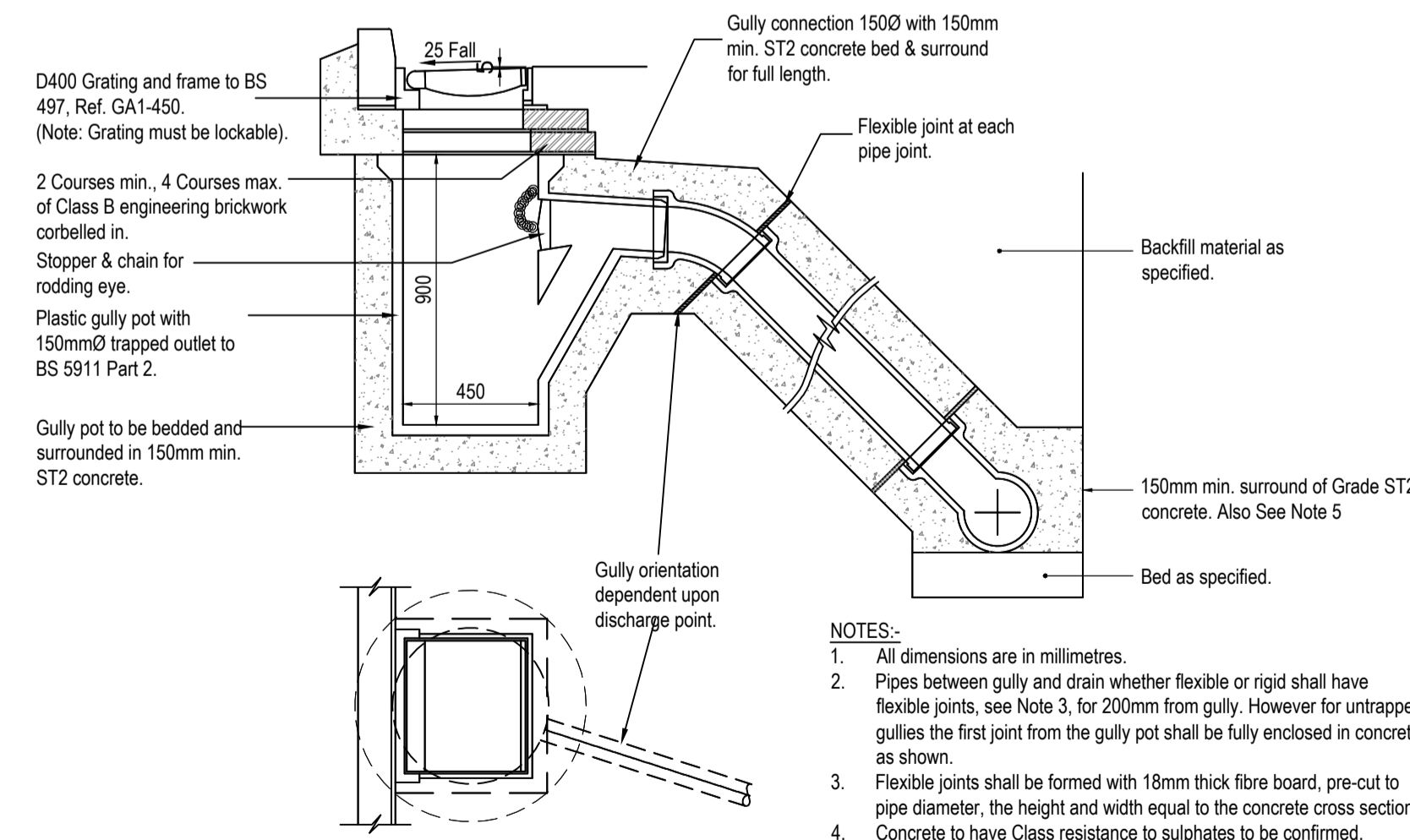
BN or BN25 - BULLNOSE KERB
Scale 1:10



HB2 - HALF BATTERED KERB
Scale 1:10



EF - EDGING KERB
Scale 1:10



- NOTES:
- All dimensions are in millimetres.
 - Pipes between gully and drain whether flexible or rigid shall have flexible joints, see Note 3, for 200mm from gully. However for untrapped gullies the first joint from the gully pot shall be fully enclosed in concrete as shown.
 - Flexible joints shall be formed with 18mm thick fibre board, pre-cut to pipe diameter, the height and width equal to the concrete cross section. Concrete to have Class resistance to sulphates to be confirmed.
 - Where a prefabricated junction is used, the concrete surround to the drain junction may be omitted.

Rev	Date	Description	By	Appd
C3	15.07.20	Updated for in-situ testing CBR testing and paving thickness adjusted. S278 detail added.	DG	DG
C2	11.12.19	Extent and layout of phase 1 amended	JH	AO
C1	15.10.19	Issued for construction	JH	DG

PROJECT:
BUCKMORE FARM, PETERSFIELD

TITLE:
HIGHWAY CONSTRUCTION DETAILS
PHASE 1

CLIENT:
GENTIAN (PETERSFIELD) LTD.

SCALE@A1:
AS SHOWN

PROJECT REF:
16156

DRAWING No:
750

REV:
C2

Revision Referencing
P = Preliminary A = Approval T = Tender C = Construction

Jubb