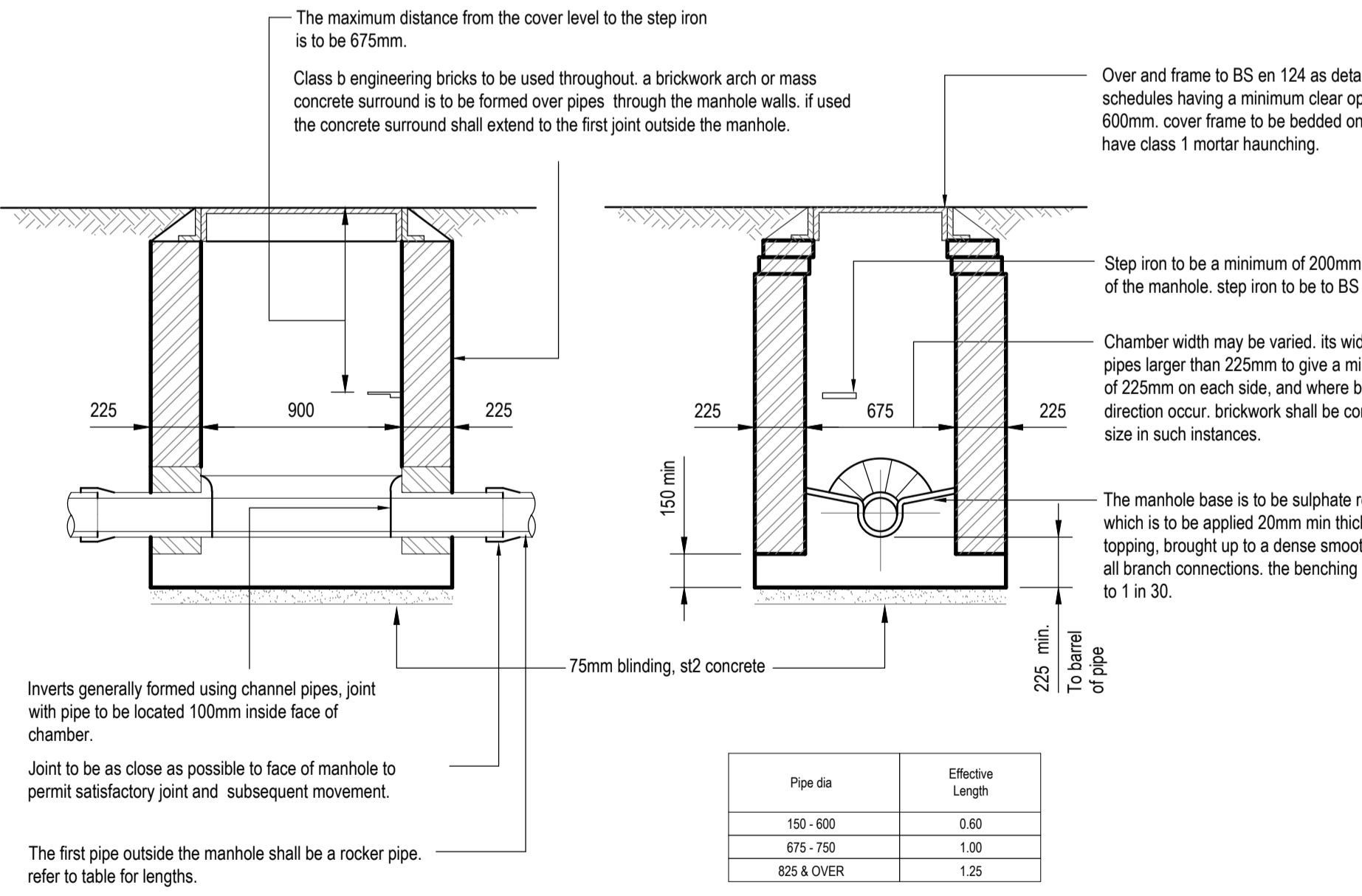
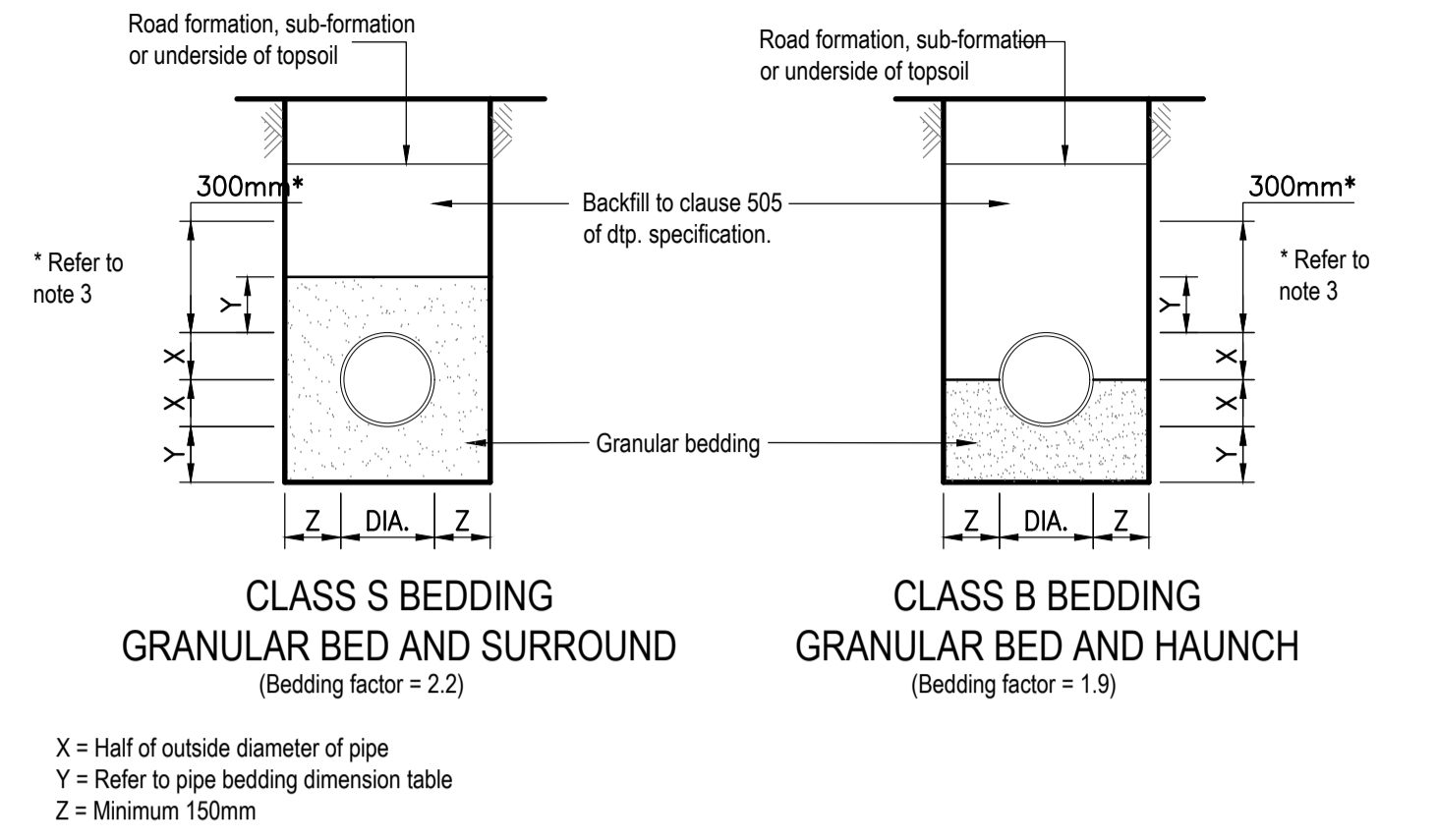


MANHOLE - TYPE 2
DEPTH TO SOFFIT = 3.0m MAXIMUM

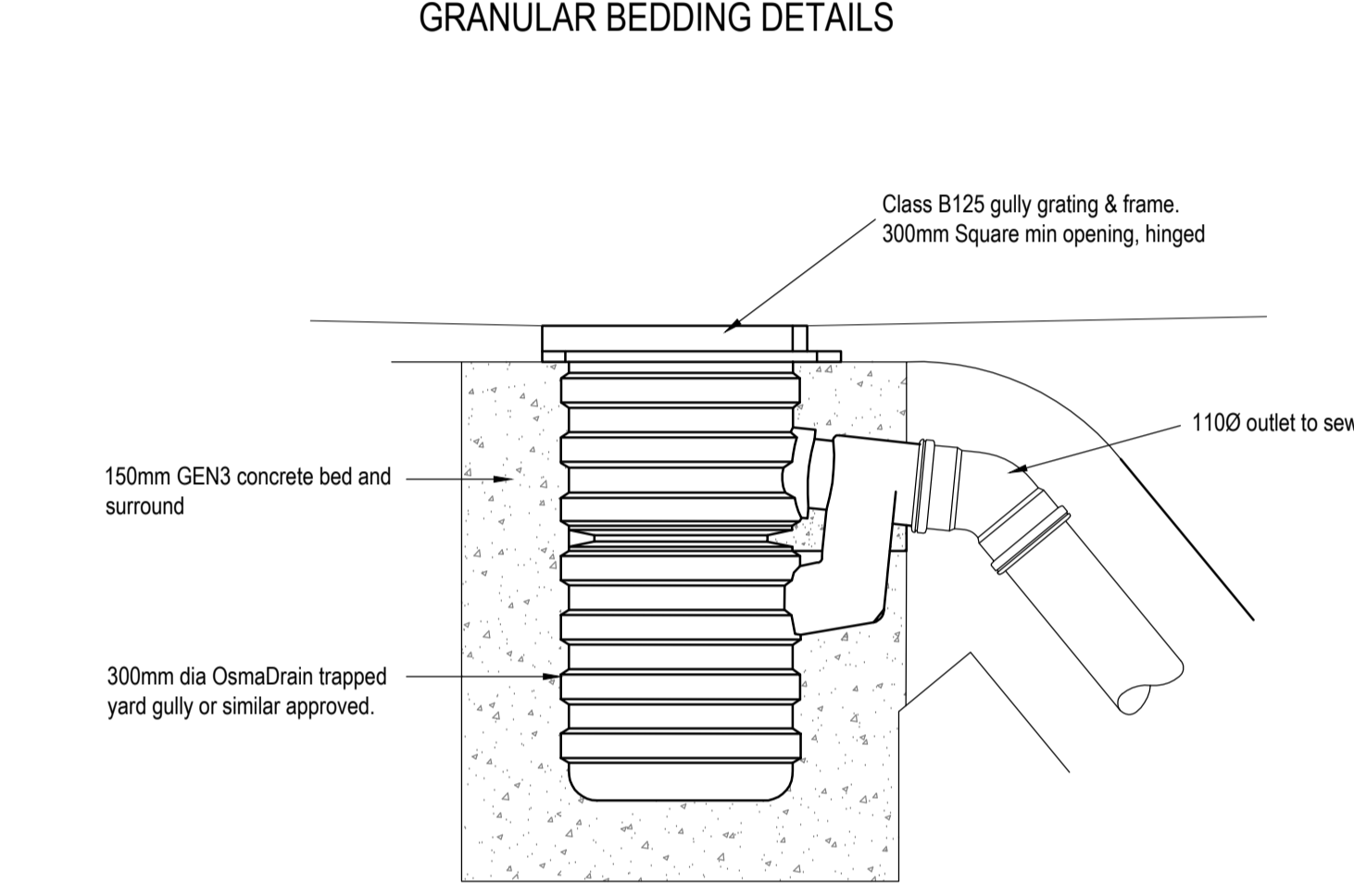


MANHOLE TYPE D NOT TO SCALE
DEPTH TO SOFFIT LESS THAN 1.0m

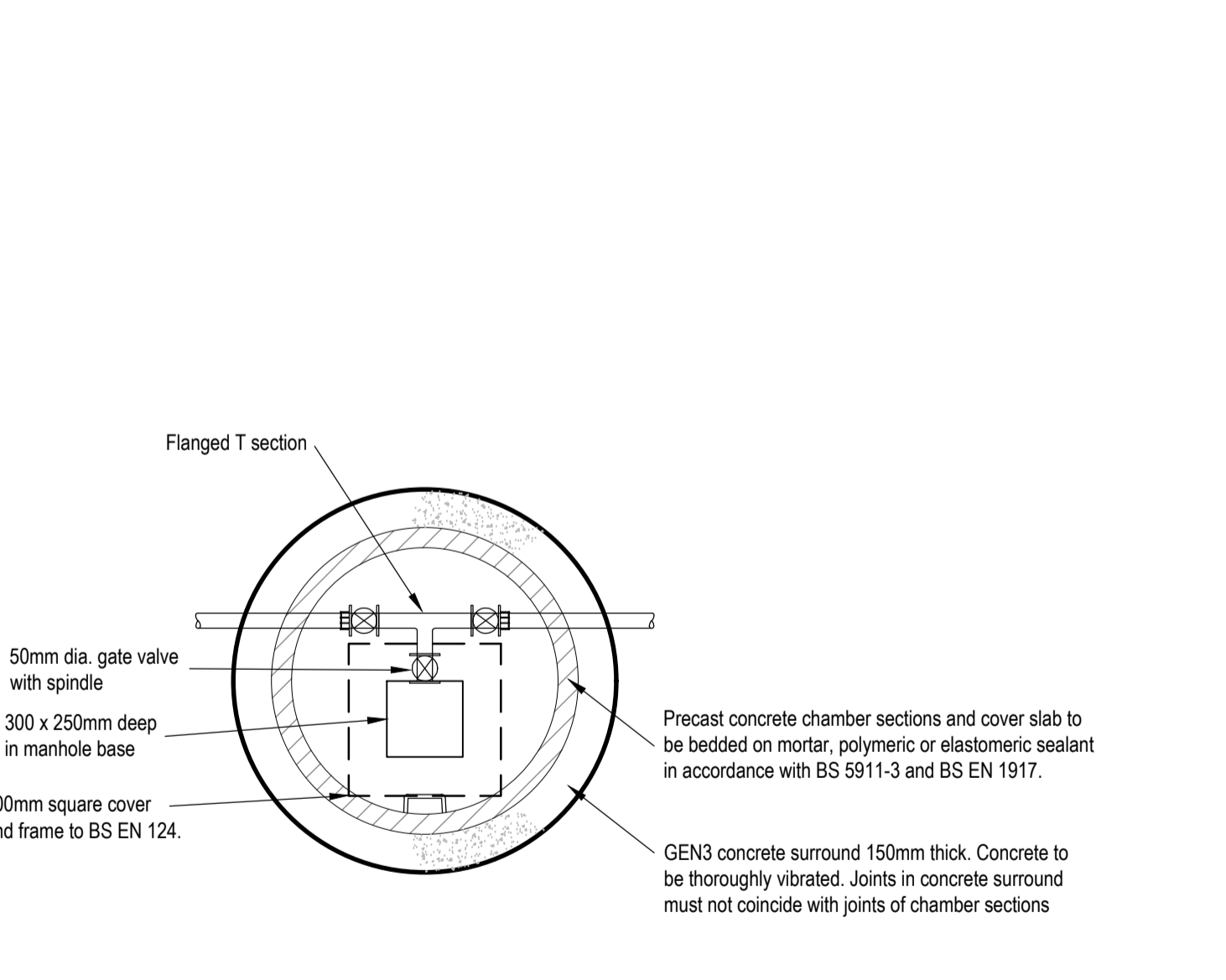


X = Half of outside diameter of pipe
Y = Refer to pipe bedding dimension table
Z = Minimum 150mm

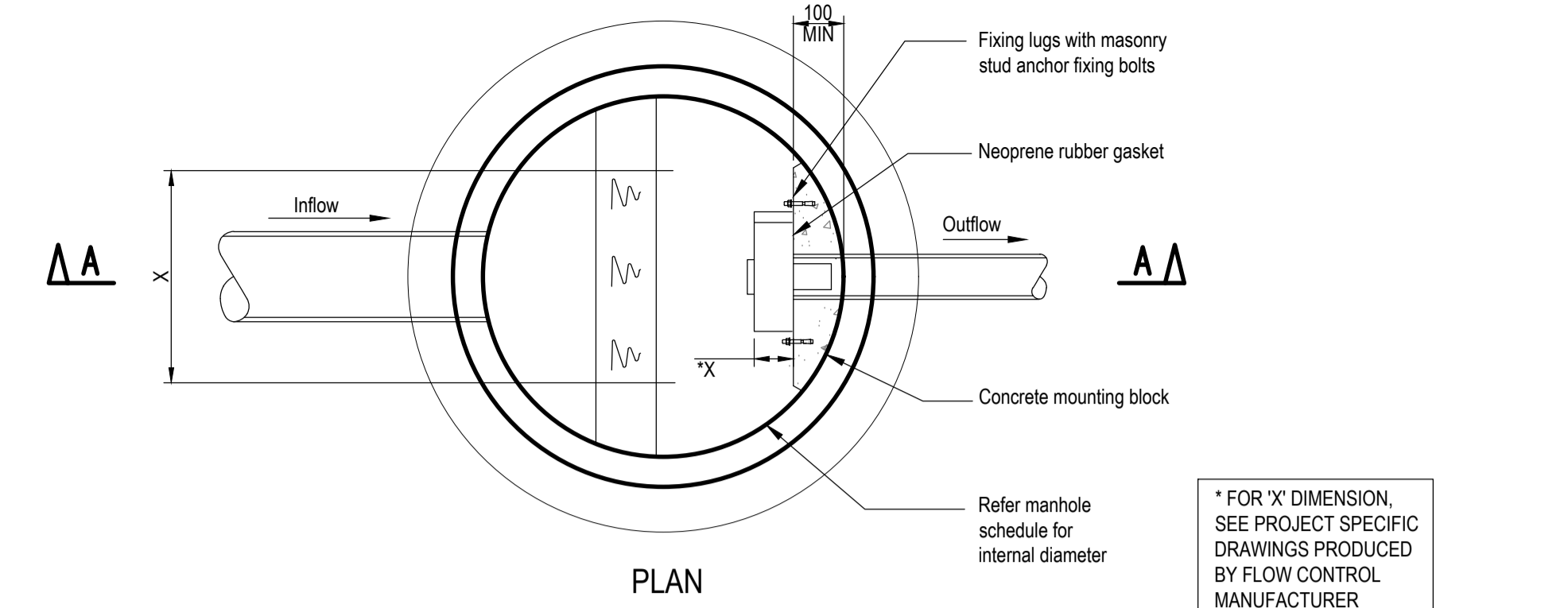
NOTES:
1. Refer to tables for dimensions and bedding details
2. Bedding beneath and at the sides of the pipe to be well compacted
3. The first 300mm of fill above the crown of the pipe is to be lightly tamped by hand. Mechanical compaction may be used only above this level.
4. Geotextiles may be used where directed or approved by the engineer to contain bedding material in certain soils e.g. running sand
5. In very wet conditions, where directed or approved by the engineer a temporary land drain may be laid within the granular bed.



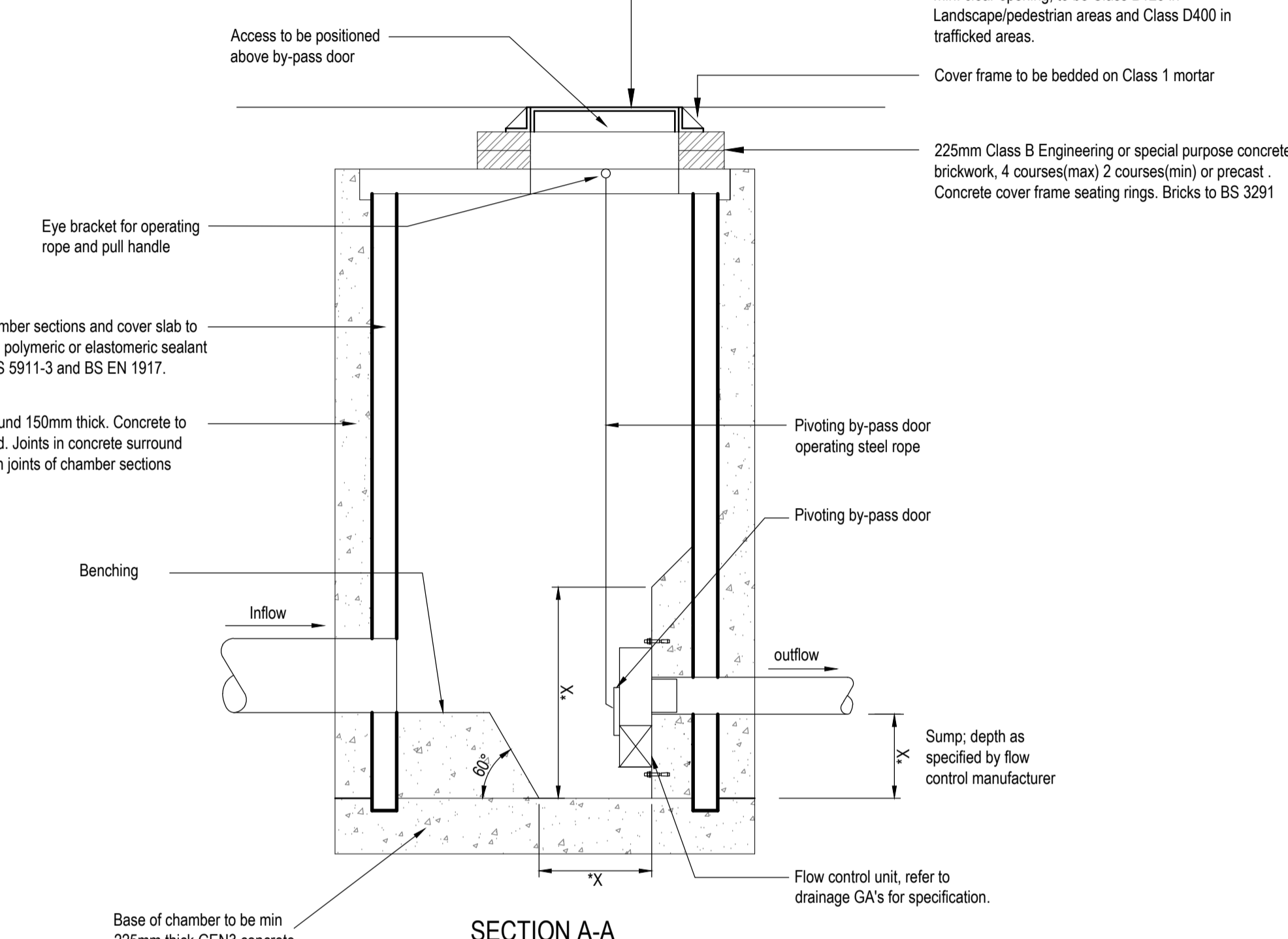
YARD GULLY DETAIL NOT TO SCALE



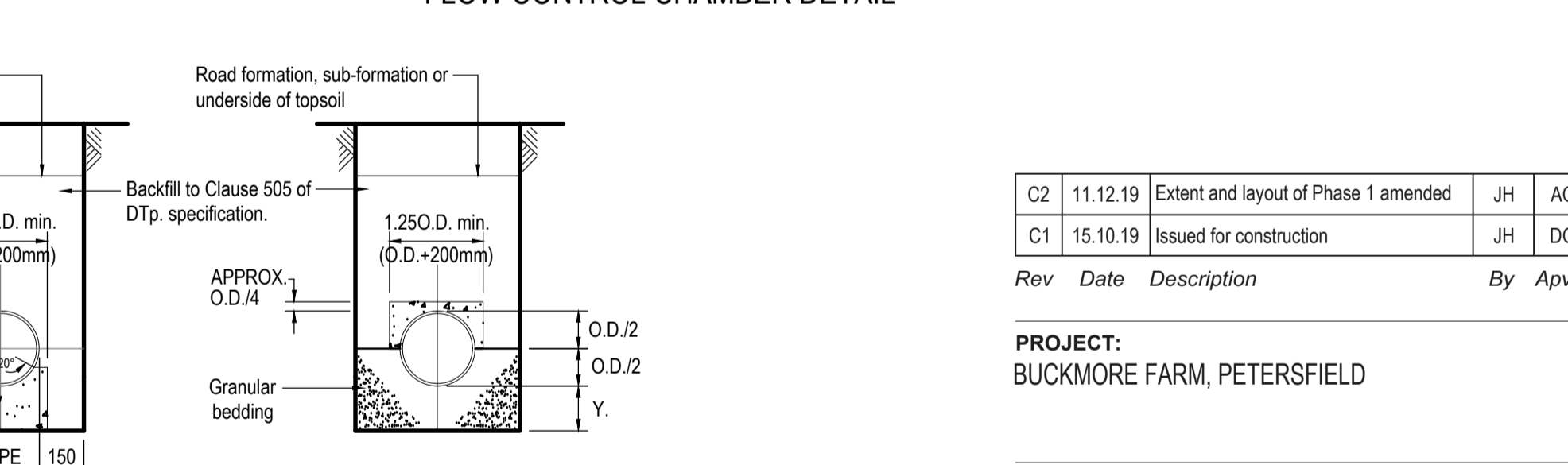
WASHOUT CHAMBER DETAIL



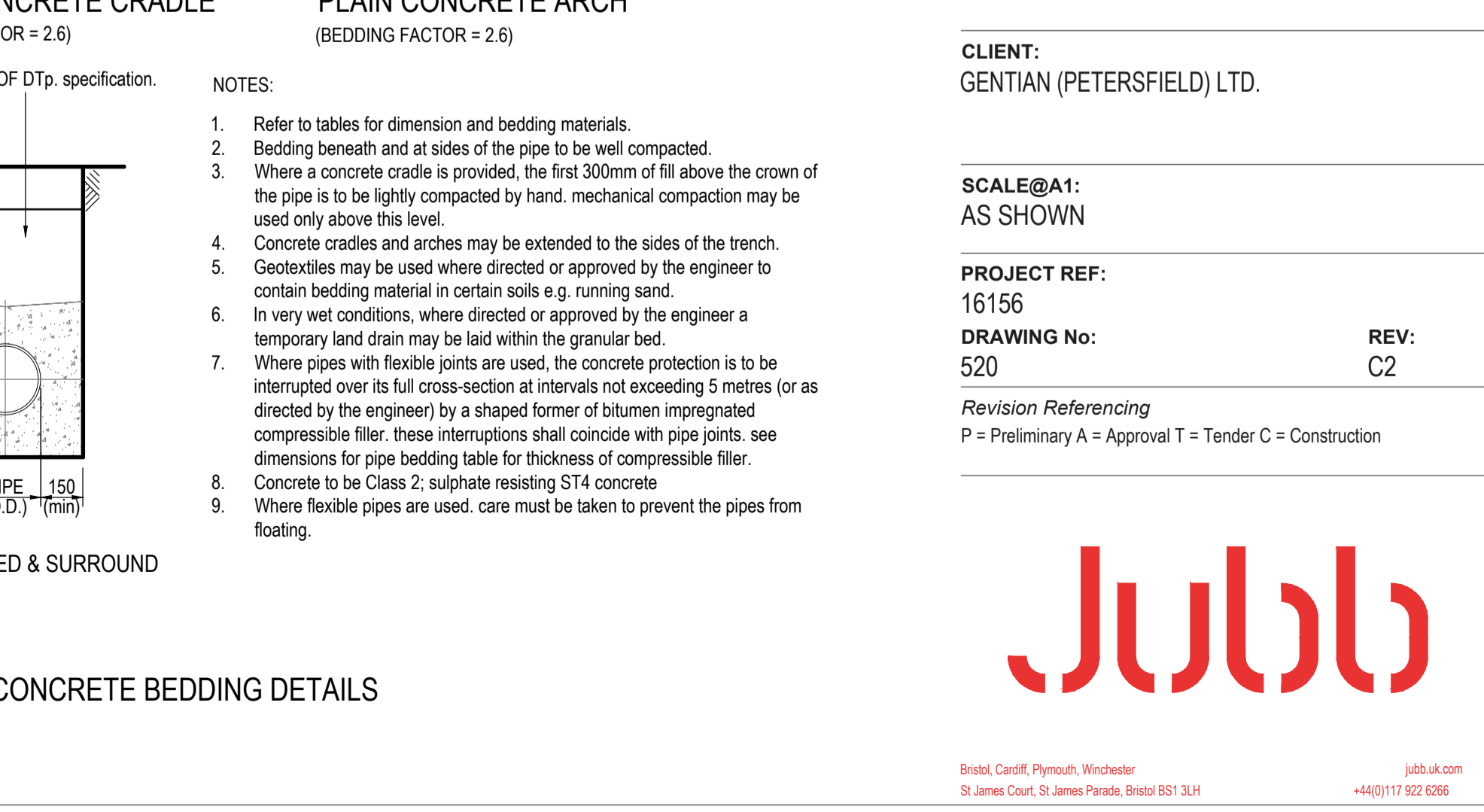
PLAN



SECTION A-A



FLOW CONTROL CHAMBER DETAIL



CONCRETE BEDDING DETAILS

Rev	Date	Description	By	App'd
C2	11.12.19	Extent and layout of Phase 1 amended	JH	AO
C1	15.10.19	Issued for construction	JH	DG

PROJECT:
BUCKMORE FARM, PETERSFIELD

TITLE:
DRAINAGE DETAILS
SHEET 1

CLIENT:
GENTIAN (PETERSFIELD) LTD.

SCALE@A1:
AS SHOWN

PROJECT REF:
16156
DRAWING No:
520

Revision Referencing
P = Preliminary A = Approval T = Tender C = Construction

