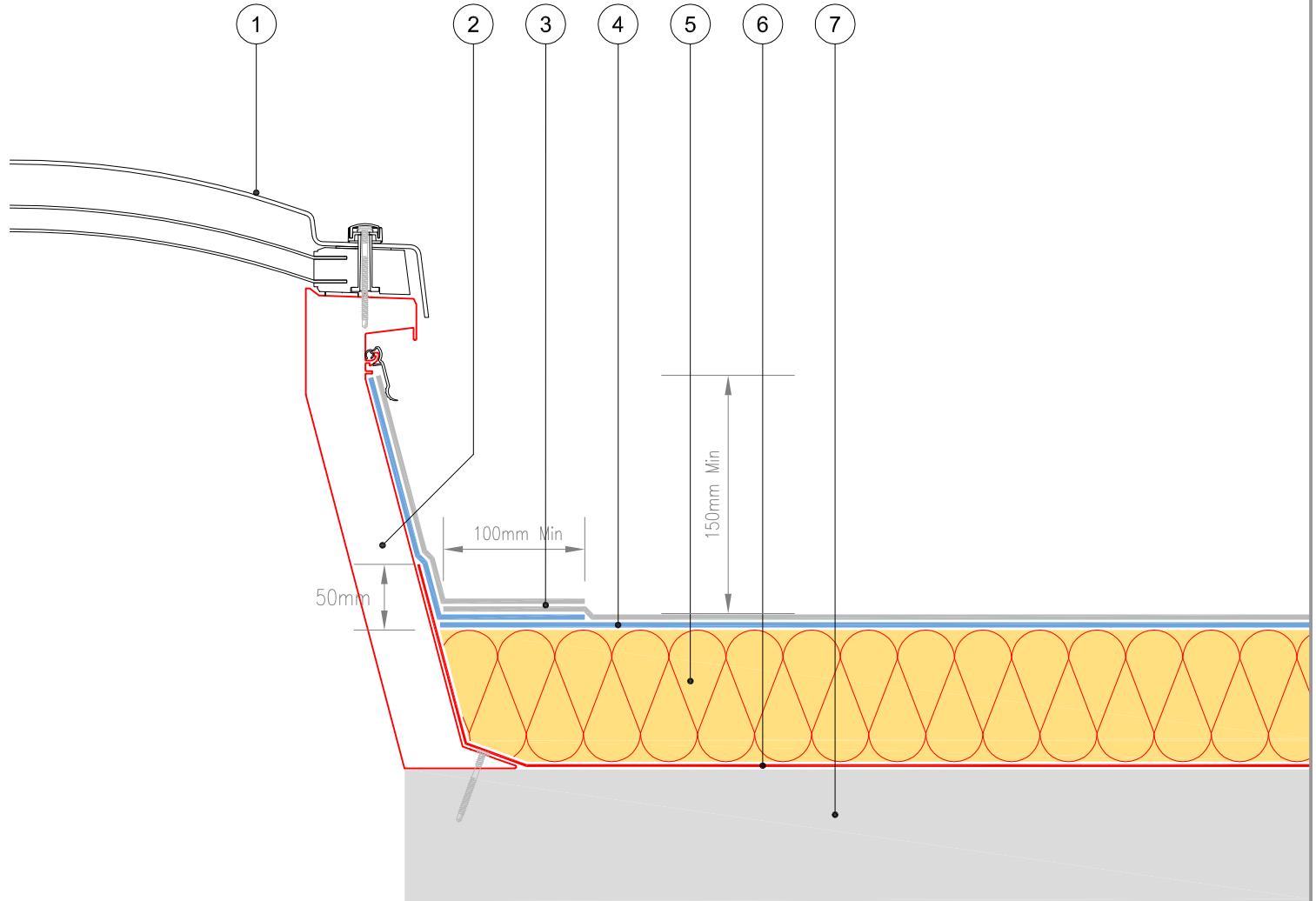



NOTE ~This is a standard generic detail and should be used for reference purposes only, and not form part of a specification document. All details must be read in conjunction with the written project specification. Please contact the Technical Department to ensure the specific project details required are accurate and appropriate.



**LEGEND :**

1. Rooflight Dome
2. Proprietary rooflight kerb (deep) and counter flashing securely fixed to the substrate
3. Soprema cap sheet
4. Soprema underlayer
5. Sopratherm insulation - thickness to suit the required U-value
6. Soprema vapour barrier / vapour control layer
7. Compatible Structural Decking suitable for fully supported roof coverings (prepared and primed to Soprema instruction)

	Drawing Number: BW-02.8	Drawing Title: Skirting to Rooflight		Version: a
	Detailed By: GT	Approved By: RC	Date: 16/02/2016	Scale: N.T.S.
 <b>SOPREMA</b>	UK – 4 LANCASTER WAY, EARLS COLNE BUSINESS PARK, COLCHESTER, ESSEX, CO6 2NS T: +44 (0) 8451 948727 F: +44 (0) 8451 948728 info@soprema.co.uk www.soprema.co.uk			
	IRELAND – UNIT 75A, COOKSTOWN INDUSTRIAL ESTATE, TALLAGHT, DUBLIN 24 T: +353 (0) 1 405 77 96 F: +353 (0) 1 462 58 87 info@soprema.ie www.soprema.ie			