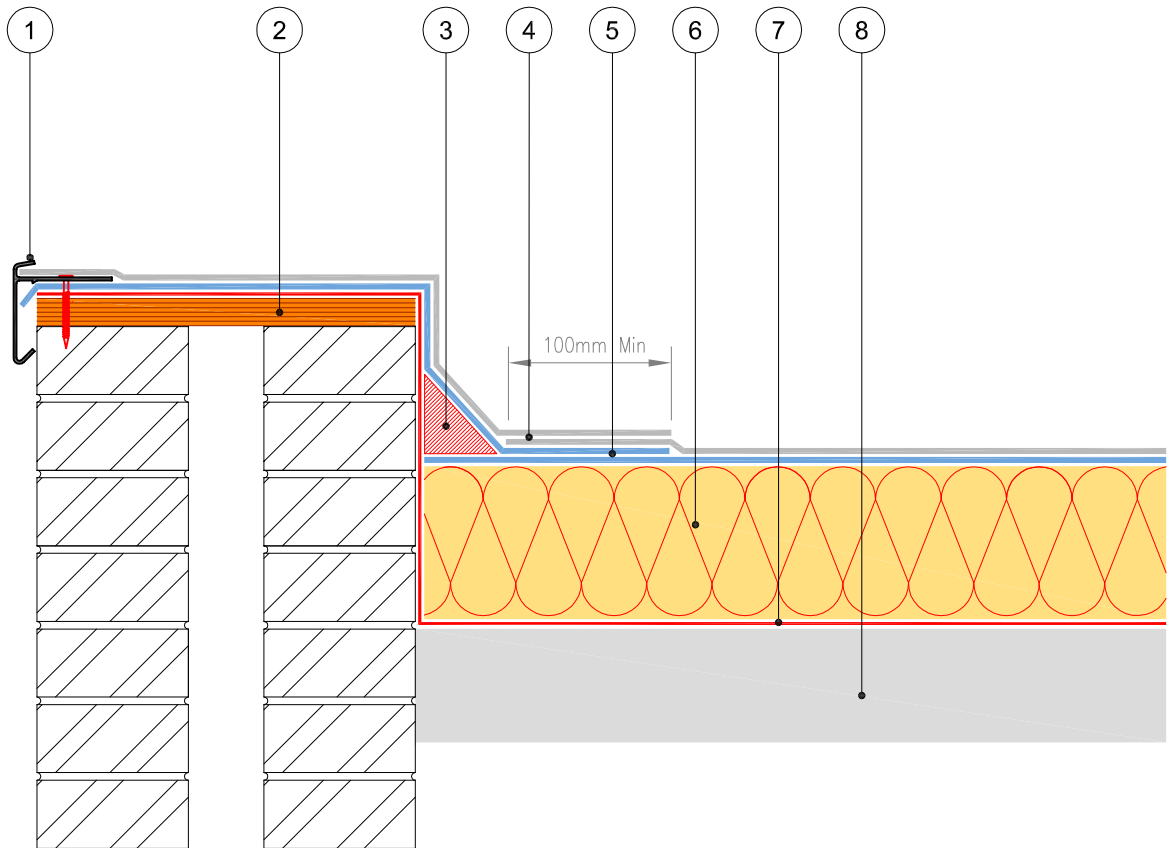


NOTE ~This is a standard generic detail and should be used for reference purposes only, and not form part of a specification document. All details must be read in conjunction with the written project specification. Please contact the Technical Department to ensure the specific project details required are accurate and appropriate.



LEGEND :

1. GRP / Aluminium Roof Edge Trim fixed at 250mm centres
2. Plywood cavity closer
3. Angle fillet
4. Soprema cap sheet
5. Soprema underlayer
6. Sopratherm insulation - thickness to suit the required U-value
7. Soprema vapour barrier / vapour control layer
8. Compatible Structural Decking suitable for fully supported roof coverings (prepared and primed to Soprema instruction)

Drawing Number: BW-03.1	Drawing Title: Kerb Detail (Trim)	Version: b
Detailed By: GT	Approved By: PC	Date: 07/11/2014
		Scale: N.T.S.



SOPREMA

UK – 4 LANCASTER WAY, EARLS COLNE BUSINESS PARK, COLCHESTER, ESSEX, CO6 2NS T: +44 (0) 8451 948727 F: +44 (0) 8451 948728 info@soprema.co.uk www.soprema.co.uk

IRELAND – UNIT 75A, COOKSTOWN INDUSTRIAL ESTATE, TALLAGHT, DUBLIN 24 T: +353 (0) 1 405 77 96 F: +353 (0) 1 462 58 87 info@soprema.ie www.soprema.ie