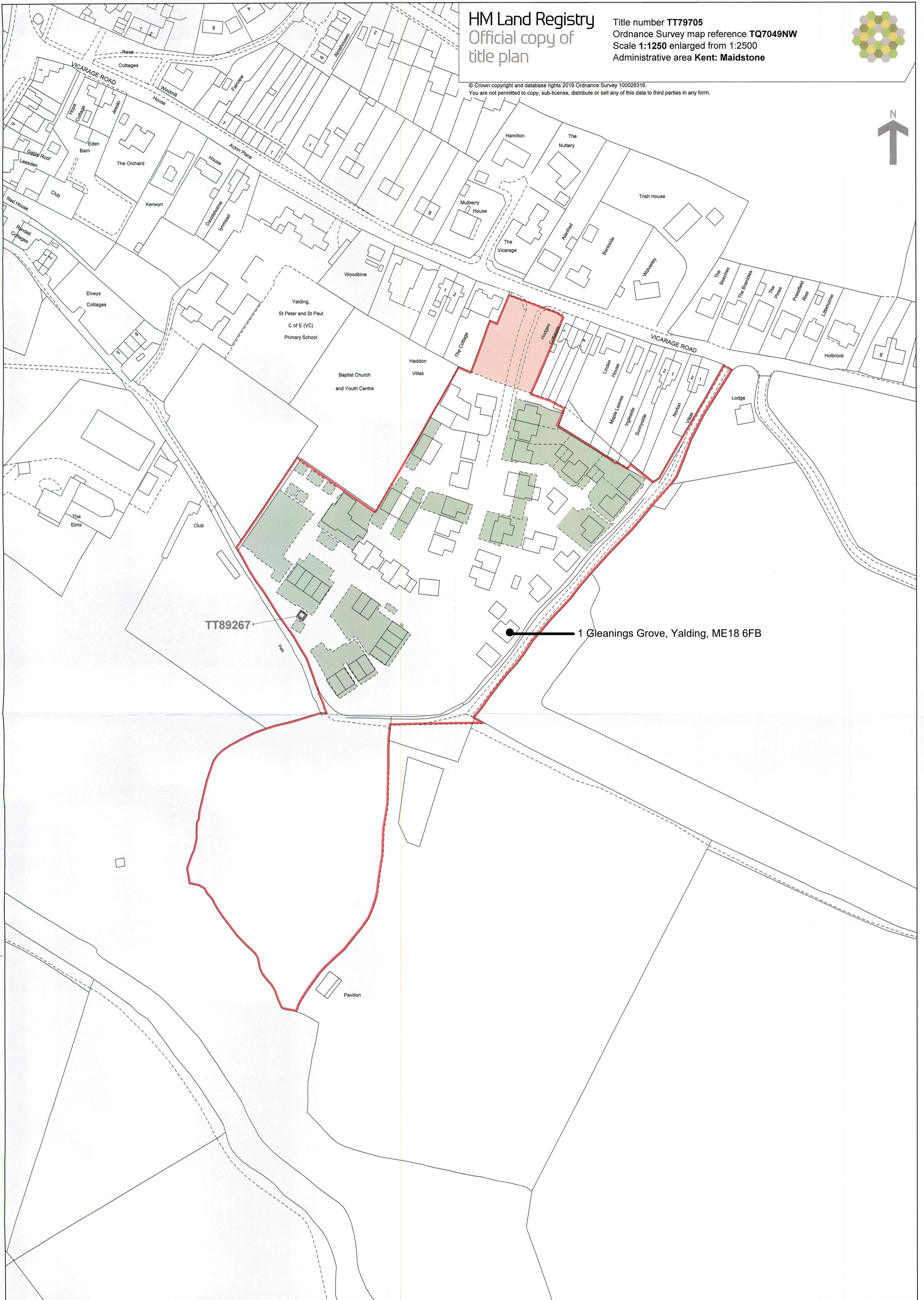
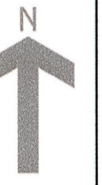


© Crown copyright and database rights 2019 Ordnance Survey 100026316.  
You are not permitted to copy, sub-license, distribute or sell any of this data to third parties in any form.



This official copy issued on 6 February 2020 shows the state of this title plan on 17 January 2020 at 09:36:43.  
It is admissible in evidence to the same extent as the original (s.67 Land Registration Act 2002).  
This title plan shows the general position, not the exact line, of the boundaries. It may be subject to distortions in scale. Measurements scaled from this plan may not match measurements between the same points on the ground.  
This title is dealt with by HM Land Registry, Durham Office.