

Advice : HSL-210128130154-99 DO NOT ADVISE AGAINST

Your Ref: 21/00102/FUL

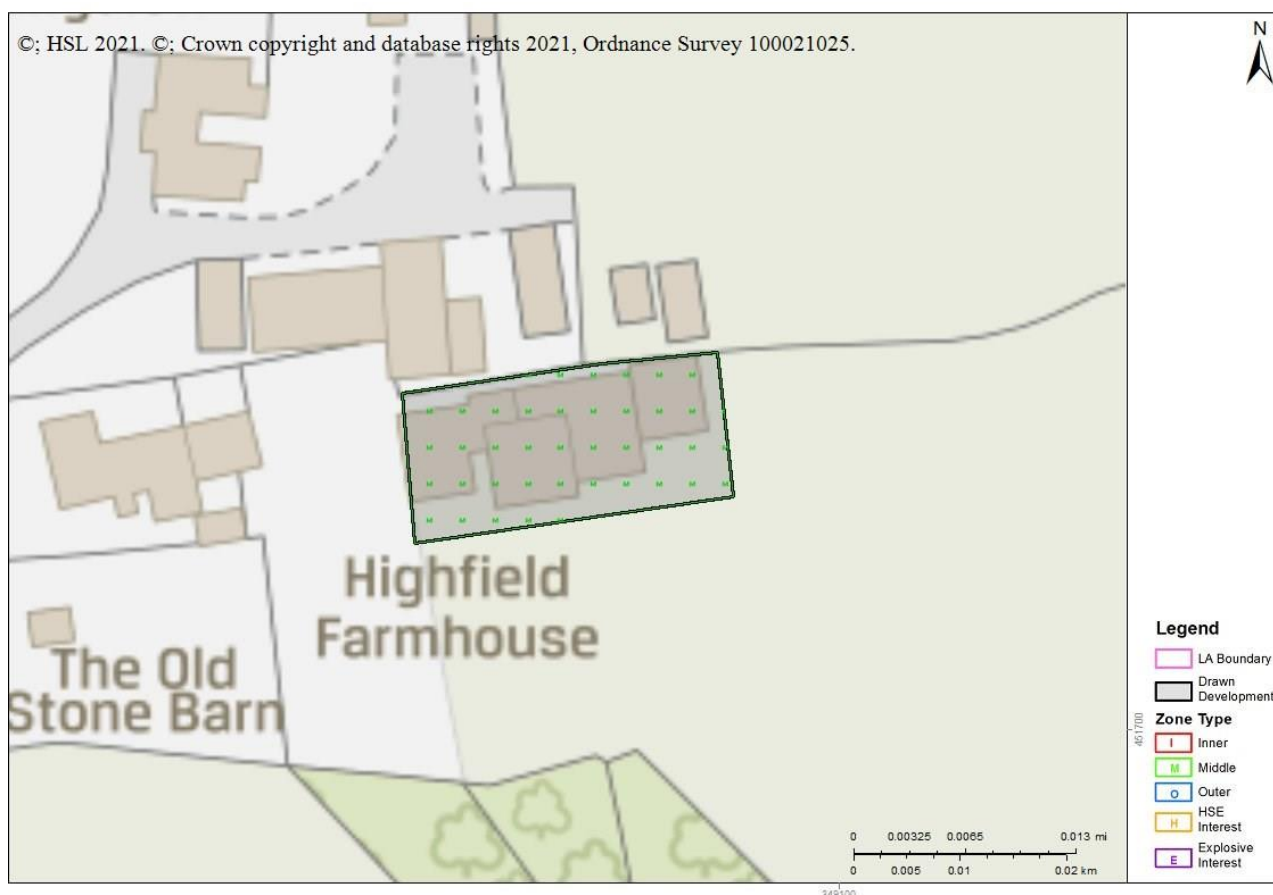
Development Name: Highfield Farm Wallace Lane Forton Preston Lancashire PR3 0BA

Comments: Erection of a replacement building for domestic and agricultural use (proposed) and change of use of agricultural access gate and track to access dwelling and extension to domestic curtilage (retrospective) (following removal of existing agricultural building)

Land Use Planning Consultation with Health and Safety Executive [Town and Country Planning (Development Management Procedure) (England) Order 2015, Town and Country Planning (Development Management Procedure) (Wales) Order 2012, or Town and Country Planning (Development Management Procedure) (Scotland) Regulations 2013]

The Health and Safety Executive (HSE) is a statutory consultee for certain developments within the Consultation Distance of Major Hazard Sites/ pipelines. This consultation, which is for such a development and is within at least one Consultation Distance, has been considered using HSE's planning advice web app, based on the details input on behalf of Wyre District (B).

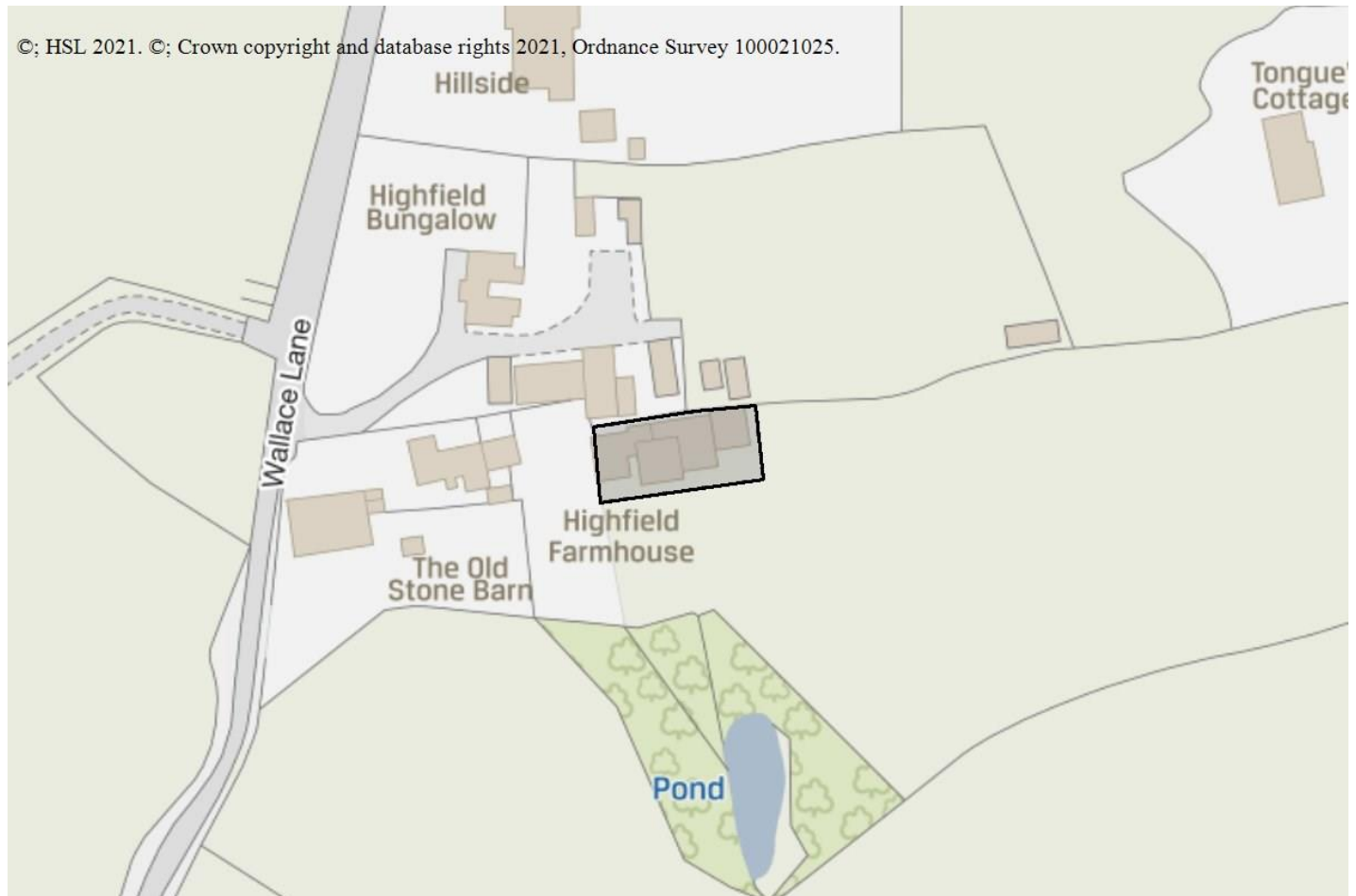
HSE's Advice: Do Not Advise Against, consequently, HSE does not advise, on safety grounds, against the granting of planning permission in this case.



Breakdown:

Outdoor Use By Public : Do Not Advise Against

What is the maximum number of people likely to be present at any one time? Up to 100 people



Pipelines

- 6838_1115 National Grid Gas PLC

As the proposed development is within the Consultation Distance of a major hazard pipeline you should consider contacting the pipeline operator before deciding the case. There are two particular reasons for this:

- The operator may have a legal interest (easement, wayleave etc.) in the vicinity of the pipeline. This may restrict certain developments within a certain proximity of the pipeline.
- The standards to which the pipeline is designed and operated may restrict occupied buildings or major traffic routes within a certain proximity of the pipeline. Consequently there may be a need for the operator to modify the pipeline, or its operation, if the development proceeds.

HSE's advice is based on the situation as currently exists, our advice in this case will not be altered by the outcome of any consultation you may have with the pipeline operator.

This advice report has been generated using information supplied by Hannah Hale at Wyre District (B) on 28 January 2021.

Note that any changes in the information concerning this development would require it to be re-submitted.

