

Barometer housing

Specification Proposal for Metal housing for Fitzroy Barometer, Falmouth.

Existing:



Existing is a wooden frame screwed to the granite internally, then housing a damaged and decaying black painted thin wooden door, 4mm glass (broken), 2 light hinges and a single central lock.

Please note, the proposals are all subject to review with fabricator.

A Satin Stainless steel housing (consisting of 2 sides, top and bottom) with lockable hinged glazed front door is proposed to cover and secure the barometer in the existing granite housing and plinth.

- Stainless box fabricated from 4mm 316L marine grade stainless steel, secured in to rebate with resin bonded fixings into existing holes in granite reveals
- Lexan Margard or Polyguard UV in 5 or 6mm hard coated polycarbonate sheet bonded to a 4mm thick satin stainless steel door frame.
- Stainless Steel Hinges with Secured (non accessible) fastenings

- Security keyed stainless steel cam locks
- Not hermitically sealed.

See Drawing FCS 02 Option 2a sketches for more details and dimensions for above

The flange around the housing box is drawn as 20mm, but might be reduced.

Finish. A bare stainless steel metal- brushed/ satin finish is proposed.

3 hinges proposed, with two cam locks.

Door Panel may need corner stiffeners on back, 4mm stainless with Lexan Margard or Polyguard UV polycarbonate bonded on rear.

Notes on Option 2a

Door frame proud of angle frame but face appearance is one piece

Hinges concealed

No welded lugs as door stops but perimeter with door face frame folded along outside edge

Reduced risk of jemmy in gap between door and frame

Weep holes to be provided at bottom in granite and door frame to allow drainage


Small Ventilation holes may need to be drilled into polycarbonate subsequent to installation

All Stainless steel dimensions subject to review

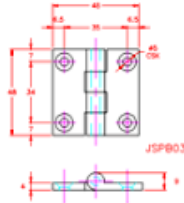
Proposed hardware: **For illustration only**

Hinges:

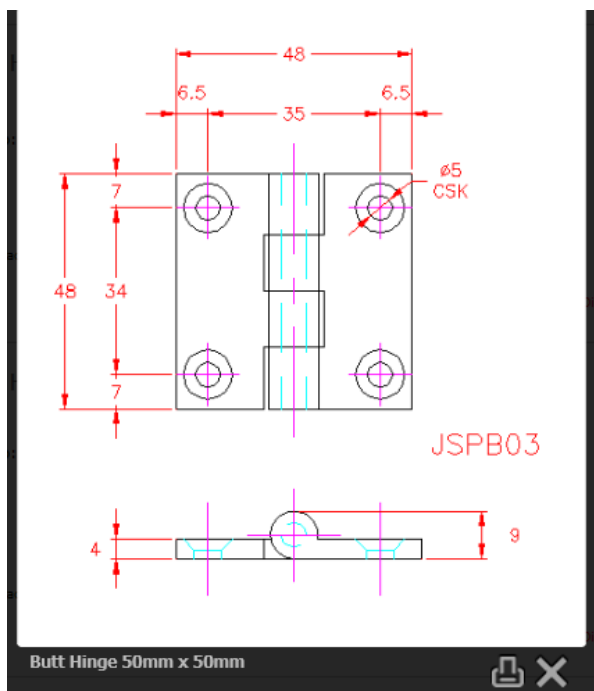
Butt Hinge - 50mm x 50mm

Part No: **JSPB03**
Grade: **316** 
Finish: **Mirror**

Price:
£4.48 each + vat



WARNING: Dimensions can vary



Lock:

RS Stock No.: **195-9600** | Mfr. Part No.: **1336032** | Brand: Euro-Locks a Lowe & Fletcher group Company

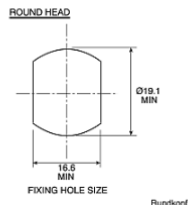
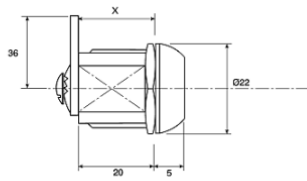


✓ 658 In stock for delivery

Price Each
£14.73
(exc. VAT)

Units
1 - 4
5 - 9
10 - 29
30 +

Units
[Check stock levels](#)



Photos below of existing housing as of spring 2019



