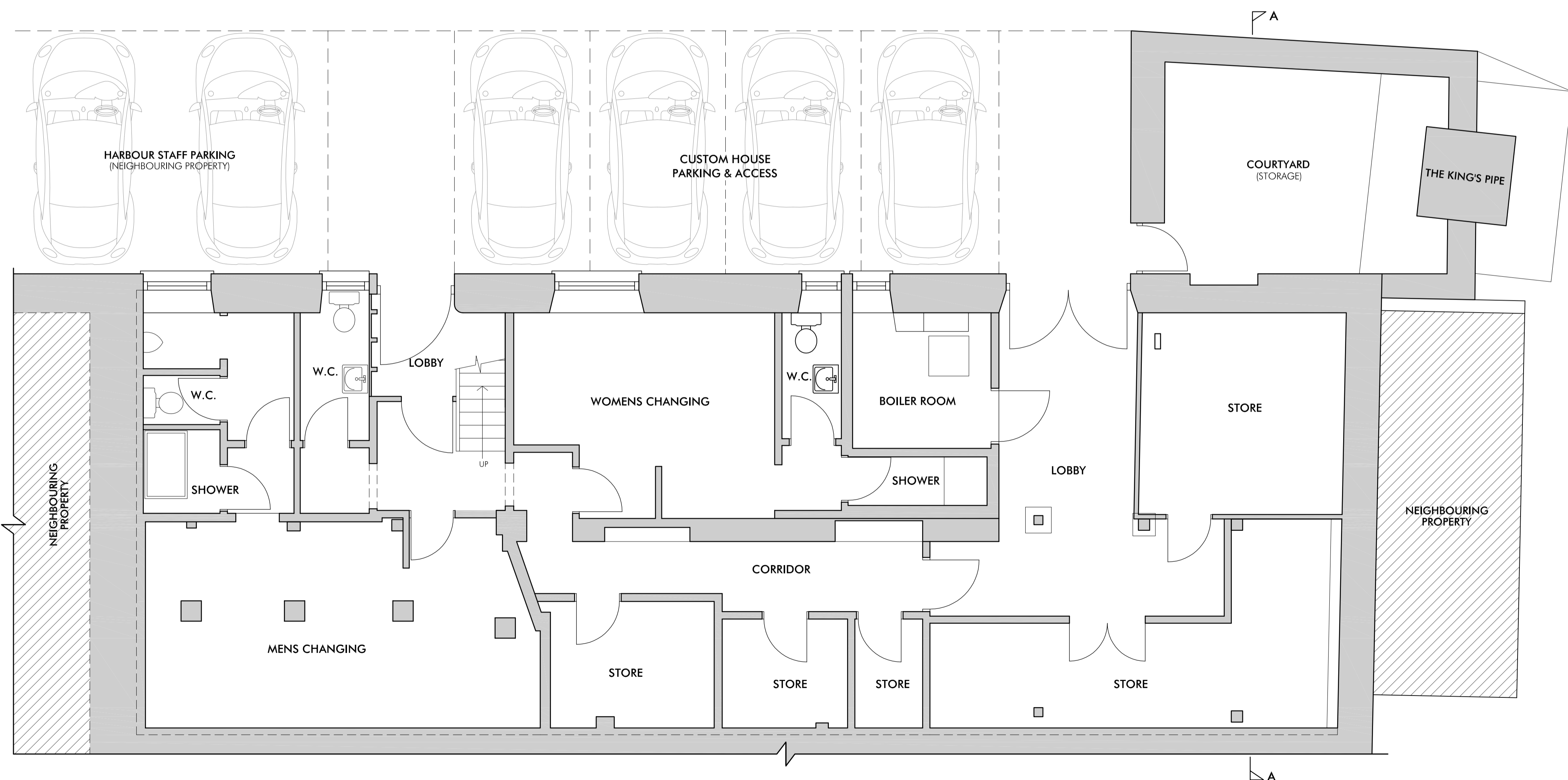
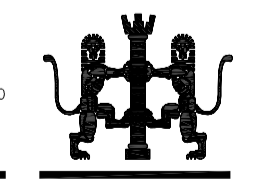


FIRST FLOOR PLAN



GROUND FLOOR PLAN

REVISION	NOTE	DATE	INS
01	PROPOSED CHANGE OF USE CUSTOM HOUSE ARWENACK STREET, FALMOUTH C/O THE STABLE BAR & RESTAURANTS LTD		SM
02	EXISTING FLOOR PLANS		MD
03	PLANNING	2016.C.05	



CAD ARCHITECTS LIMITED
 COMMERCIAL ROAD, PENNIN, CORNWALL TR10 8AG
 T +44(0)1526 971 344 F +44(0)1526 371 310
 www.cadarchitects.co.uk

ST. MARY'S HOUSE
 COMMERCIAL ROAD, PENNIN, CORNWALL TR10 8AG
 T +44(0)1526 971 344 F +44(0)1526 371 310
 www.cadarchitects.co.uk

DATE: APRIL 2013
 SCALE: 1:50 @ A1
 CHECKED: MD