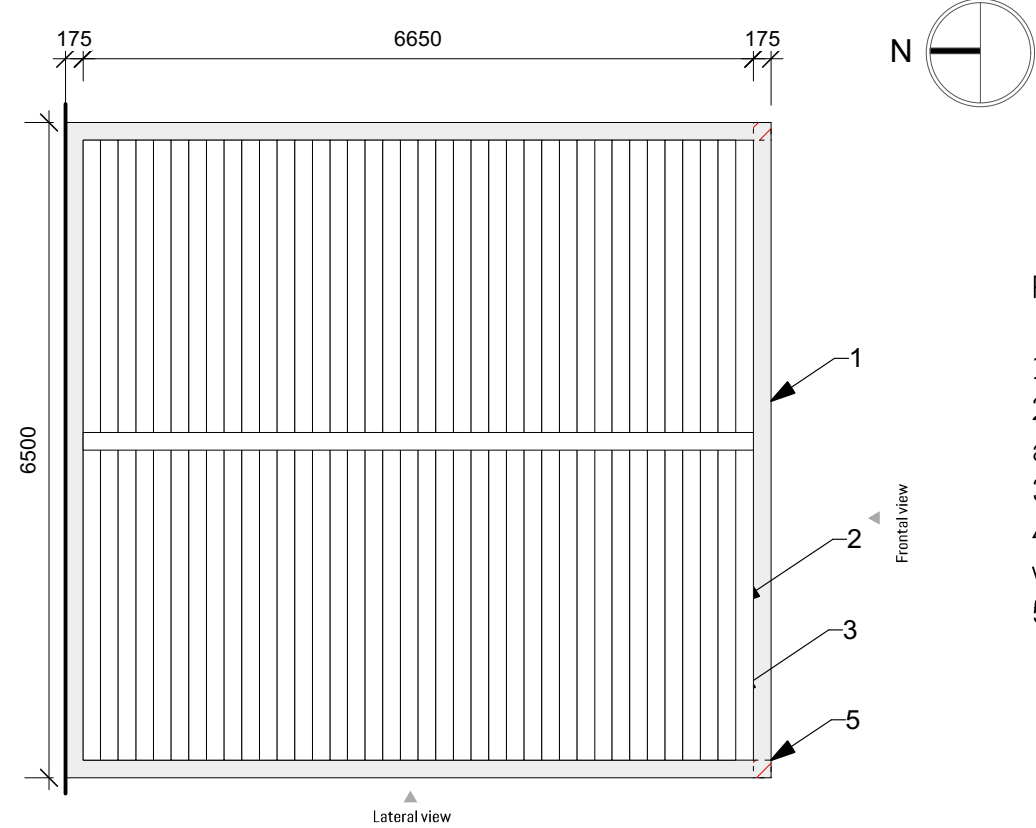


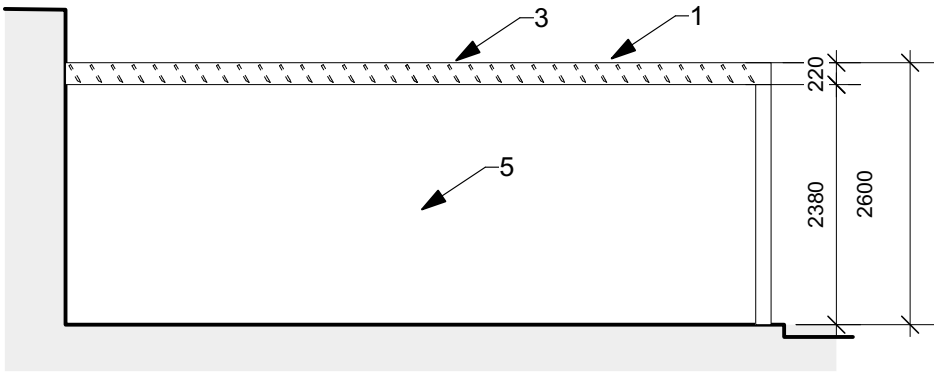
PERGOLA OVER LIVING AREA PLAN



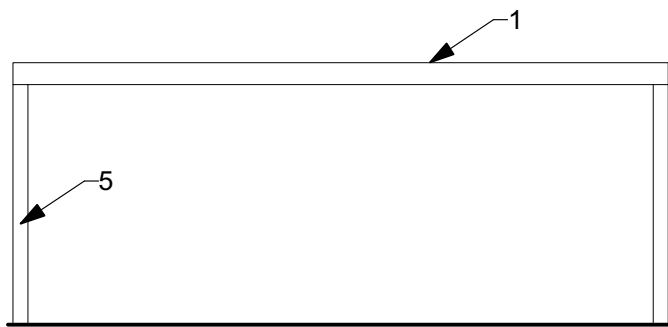
REFERENCES:

- 1-Extruded Aluminium profiles 4mm-powdercoated colour TBA
- 2-Brackets, pins and plates in stainless steel, resistant against external agents
- 3-shading blades wholly aluminium made
- 4-Drainage Pipes are integrated in the structure perimeter for water drainage
- 5-Posts 150x150mm profiles

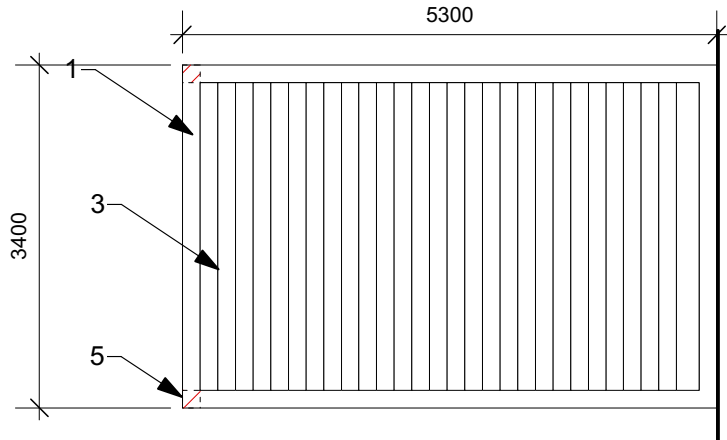
LATERAL VIEW



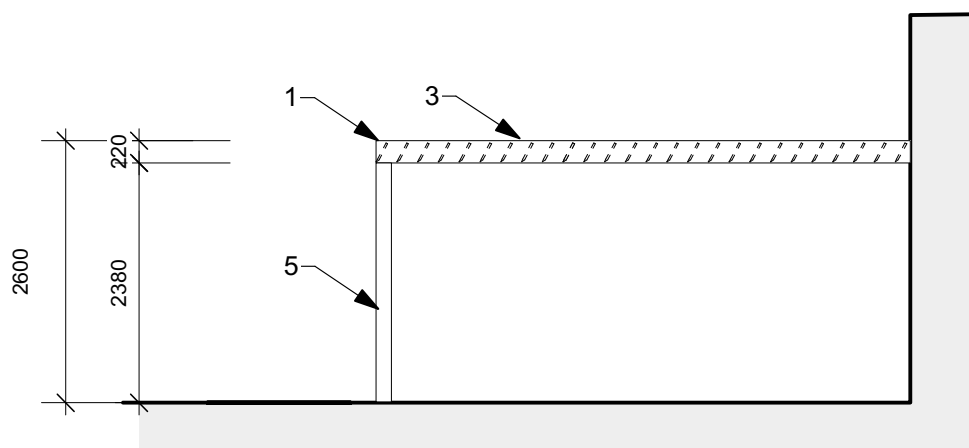
FRONTAL VIEW



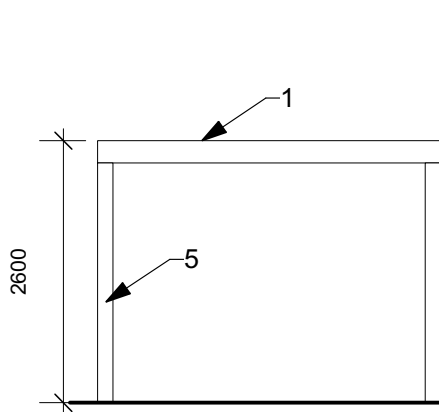
PERGOLA OVER KITCHEN AREA- PLAN



LATERAL VIEW



FRONTAL VIEW



General Notes

Dimensions, areas and levels where given are approximate and subject to site survey.

Do not Scale from this drawing Use figured dimensions only

All dimensions are to be checked on site. Any discrepancies are to be reported to the architect before the work commences. Figured dimensions only are to be taken from this drawing.

This drawing is to be read in conjunction with all relevant consultants' and/or specialists drawings/documents

Status: PLANNING

Project Name and Address:
Marsham Street Flat
Flat 701, Romney House, Marsham Street, London SW1P 3DR

Client:

Drawing Title
PERGOLA DETAIL

Scale: 1:75 Date: Drawn by:

Drawing No. 017 Rev by: Rev 02