

SOLEPLATES
 All soleplates are to be laid and fixed in accordance with this drawing and Bartram Timber standard details.

Soleplates to be laid level, square and true. Soleplate must be supported along entire length, any packs should be of non-compressible material. If necessary, pack and grout FIRST soleplate to the correct level.

All soleplates are preservative treated grade C16 timber.

Soleplates may need to be cut to allow openings to be formed on site They must have one nail added either side of openings prior to fixing wall panels in place. Door positions are indicated on plan. Avoid fixing soleplate where sections may be cut out for door openings.

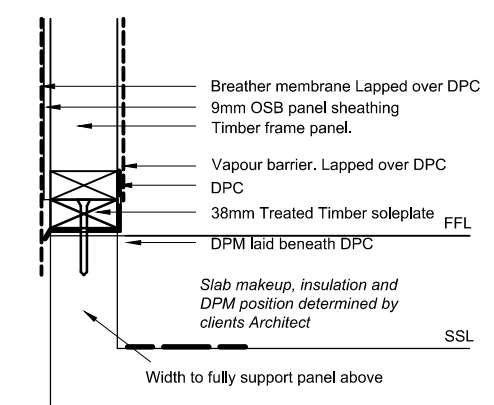
Plates
 Soleplate width to match width of wall above, i.e. 140mm, 114mm or 89mm

Number shown against soleplate refers to actual length of plate.

GENERAL
 This drawing is to read in conjunction with ALL NJE Design Services LTD project related drawings, Architects drawings, Engineers drawings & Bartram Timber standard details, project method statement and risk assessment. This should be done prior to the commencement of any works.

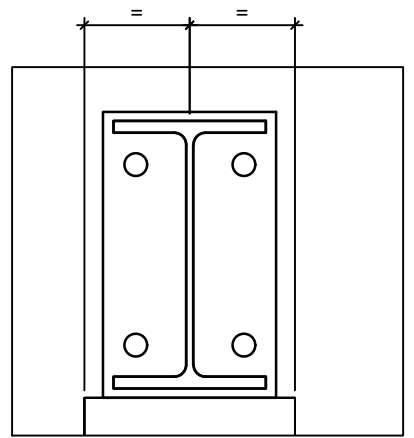
DIMENSIONS
 In the event of any dimensions being unclear or missing then please bring this to the attention of either Bartram Timber or NJE Design Services at the earliest opportunity.

Load Bearing Wall

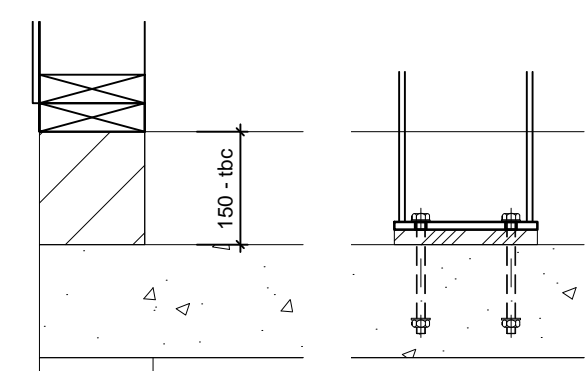


EXTERNAL SOLEPLATE FIXING DETAIL

Soleplate fixed down using N8x100z Fischer bolts at minimum 50mm from ends of soleplates and at a max. of 400mm centres. Each soleplate is to have at least 2 fixings.



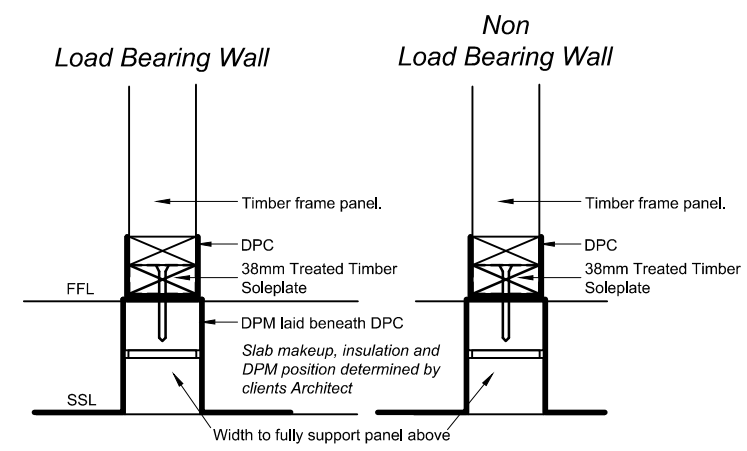
Set frame central to soleplate
1:10



Post base to foundation
1:10

Post to foundation using 4 No.12mm Grade 8.8 bolts with min embedment of 50mm. No void between post and foundation.

Table of Sole Plates (01 - GF PANELS)	
Description	Total Length
A) CLS-38X140-C16	34.69 lm
B) CLS-38X89-C16	10.64 lm



INTERNAL SOLEPLATE FIXING DETAIL

Soleplate fixed down using N8x100z Fischer bolts at minimum 50mm from ends of soleplates and at a max. of 400mm centres. Each soleplate is to have at least 2 fixings.

Rev	Date	Drawn	Description
B	Nov 20	NJE	Plant room walls moved
A	Oct 20	NJE	Construction Issue

NJE Design Services Ltd A3

2 Salcombe Close, Biggleswade, Beds, SG180FP
 01767 315301
 07572 347873
 enquiries@njedesignservices.com
 www.njedesignservices.com

Client
Bartram Timber

Project
**Sam Grace
 Gt Gransden**

Description
**Ground Floor
 Soleplates**

Status
CONSTRUCTION

Scale	Drawn	Date	Revision
1:50	NJE	Oct 20	B

NJEDS Job No. 20068
 Drawing No. 20068-100

Client Job No.

This drawing remains the property of NJE Design Services Ltd and may not be reproduced or amended except by written permission. No liability will be accepted for any amendments made by others. The Contractor is responsible for checking all dimensions before commencing any works. All work by the contractor must comply with all current relevant legislation, regulation standards guidance and law whether or not specified on this drawing. The contractor is responsible for checking this drawing against all other relevant architect and engineers details and drawings prior to commencement of site works.