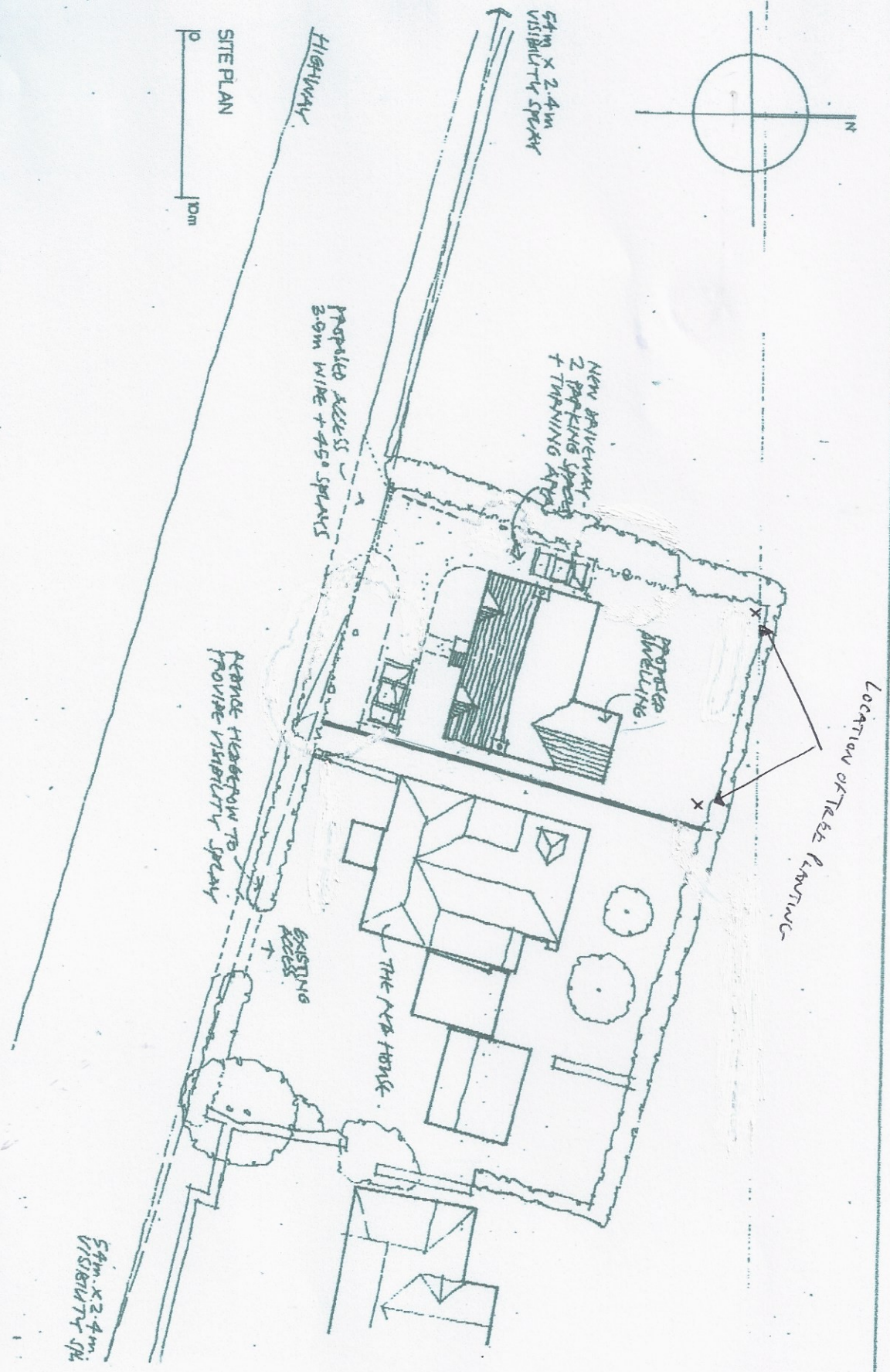


THE RED HOUSE, LONG NEWTON  
PROPOSED DWELLING

SCALE 1:200/A3  
DRG No  
DATE 12 OCT 2009



SITE PLAN  
10m



LOCATION OF TREE PLANTING

HIGHWAY

54m x 2.4m  
VISIBILITY SPRAY

NEW DRIVEWAY -  
2 PARKING SPACES  
+ TAPPING AREA

PROPOSED ACCESS  
30m WIDE + 450 SPRAYS

REMOVE HEDGEROW TO  
PROVIDE VISIBILITY SPRAY

THE RED HOUSE

EXISTING

54m x 2.4m  
VISIBILITY SPRAY