

MATERIALS & EXTERNAL FINISHES SCHEDULE AS REQUIRED TO SATISFY CONDITIONS 3, 4, 5, 6, 7 & 8 ATTACHED TO LISTED BUILDING CONSENT 19/01947/LBC.

EXTERNAL FINISHES

MATERIALS FOR THE WALLS & EXTENAL FINISHES

Timber elements:

Treated larch boards - a translucent treatment will be applied to protect the wood from harsh weather – it will not be coloured. The treatment will allow the timber to “silver” over time.



Brick plinths:

A reclaimed heritage brick



Stone:

No new stone will be required.

Mortar:

1part - Lime

1part - White cement

4parts - sharp sand (grey)

1part - Building sand (yellow)

(This mixture can be adjusted to suit conservation requirements)



NOTE: The method of removing existing mortar will be 'by hand' (hammer and chisel). Stones will be removed and reused laid on a mortar bed and raked back to allow for pointing toward the end of the conversion. The mortar mix stated above will be wire brushed 'flush' finish.

MATERIALS FOR THE ROOF AND EXTENAL FINISHES

Slates:

Reclaimed welsh slate (8" x 9")



Rooflight:

Conservation type



Verge & Eaves Details:

Rafter feet to be exposed – any that are perished will be repaired using best practice conservation techniques.



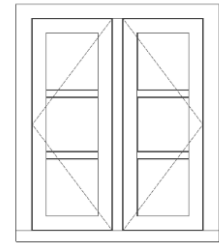
JOINERY DETAILS

Windows:

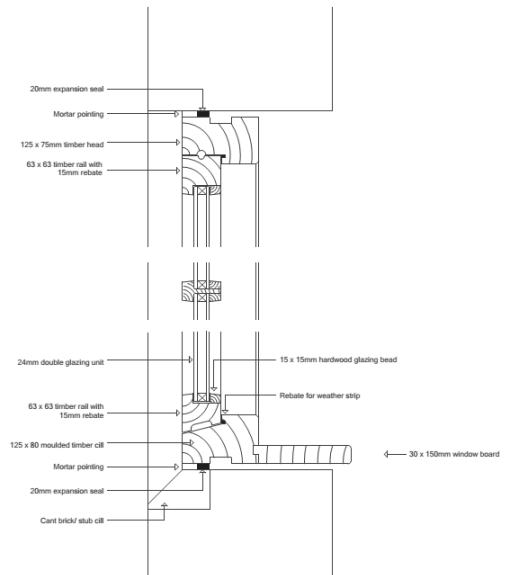
Hardwood

(to be painted dark grey to match annexe as approved)

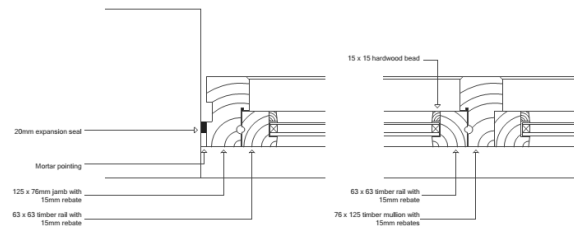
Casement window detail



Typical section



Typical jamb and mullion details



Doors:

To be simple timber planked doors, to be hardwood (painted dark grey to match window joinery).

