

DO NOT SCALE

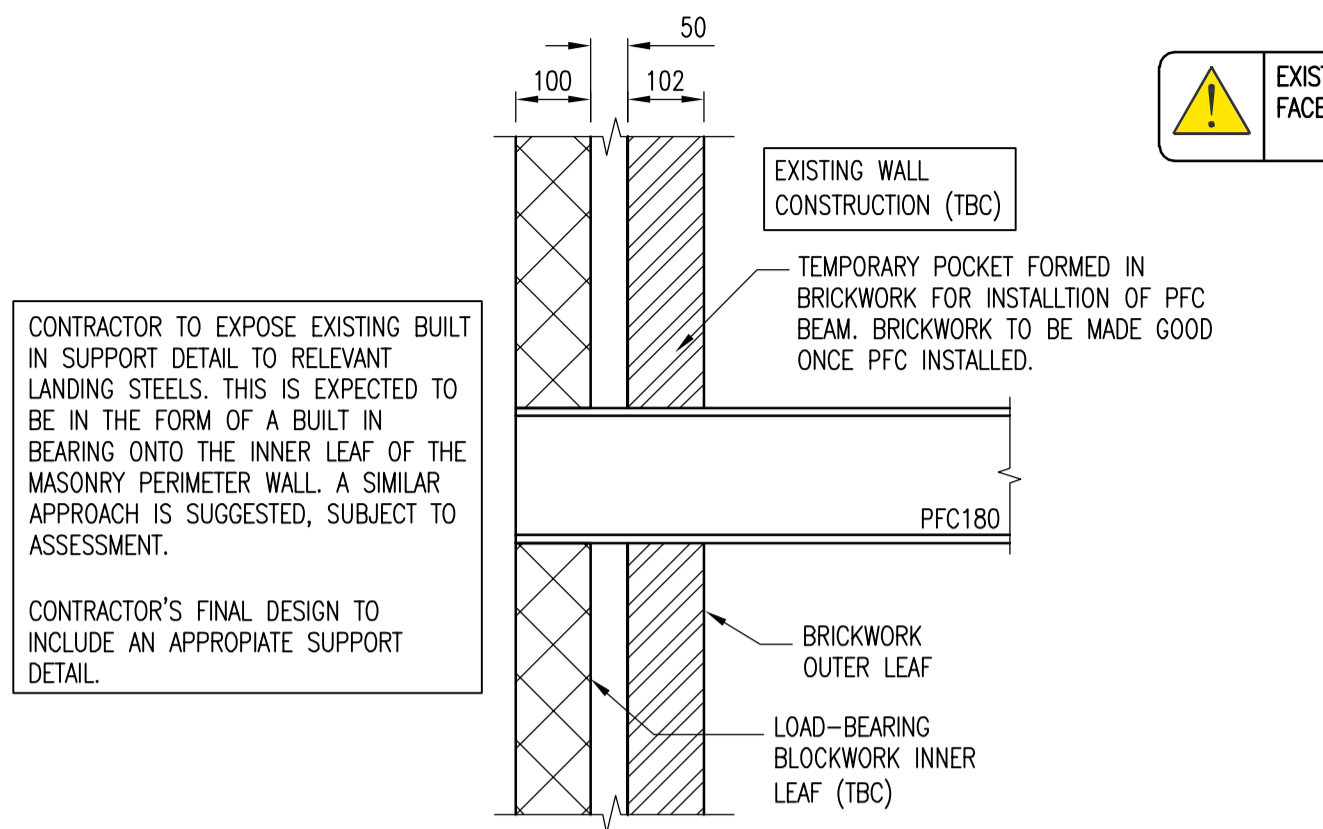
NOTES

1. THIS DRAWING IS TO BE READ IN CONJUNCTION WITH JOHN ROWAN AND PARTNERS DRAWING.
2. ALL STRUCTURAL STEELWORK TO COMPLY WITH BS EN 1993.
3. THE FINAL DESIGN OF THE STAIRCASE AND ALL STEELWORK IS TO BE COMPLETED BY THE CONTRACTOR SUITING ALL REQUIREMENTS OF THE PERFORMANCE SPECIFICATION. THE FINAL STAIR GEOMETRY AS DESIGNED BY CONTRACTOR IS TO SUIT ALL REGULATORY REQUIREMENTS.
4. ALL STRUCTURAL STEELWORK TO BE GRADE S355 (J.N.O.) BRITISH MILD STEEL TO BS EN 10056-1:1999, BS 4-1:1993, BS EN 10210-2:1997 AND BS EN 10219-2:1997.
5. ALL TREADS AND WALKWAYS ARE TO BE PROVIDED WITH THE REQUIRED SLIP RESISTANCE SUITING RELEVANT REGULATORY REQUIREMENTS AND CODES OF PRACTICE.
6. ALL STRUCTURAL STEELWORK TO BE BLAST CLEAN TO BS EN ISO 8501-1:2001, GRADE SA 2.5, FOLLOWED BY A HIGH BUILD ZINC PHOSPHATE PRIMER, TO 75 MICRON DRY FILM THICKNESS.
7. ALL BOLTS TO BE GRADE 8.8 ZINC PLATED
8. THE CONTRACTOR SHALL BE RESPONSIBLE FOR ALL SHOP DETAILS FABRICATION DRAWINGS. THE FABRICATION DRAWINGS SHALL BE SUBMITTED.
9. THE CONTRACTOR SHALL ALLOW FOR ANY AMENDMENTS OF FABRICATION DETAILS ARISING FROM ENGINEERS COMMENTS
10. DIMENSION LINES ARE NOT TO BE SCALED FROM THIS DRAWING
11. THE CONTRACTOR SHALL COMPLY WITH THE HEALTH AND SAFETY REQUIREMENTS AS SET BY THE CDM REGULATIONS, THE HEALTH AND SAFETY EXECUTIVE.
12. THE CONTRACTOR SHALL BE RESPONSIBLE FOR THE EXECUTION OF THE WORKS IN ACCORDANCE WITH THE DRAWINGS AND THE SPECIFICATION AND FOR THE ACCURACY OF ALL THE DIMENSIONS AND SETTING OUT ON SITE.
13. ALL EXPOSED STEELWORK TO BE HOT DIP GALVANISED.

⚠ EXISTING LIVE SERVICES ON EXTERNAL FACE OF APARTMENT BUILDING

⚠ EXISTING STRUCTURAL DETAILS/CONSTRUCTION TO BE CONFIRMED ON SITE PRIOR TO COMMENCING WORKS

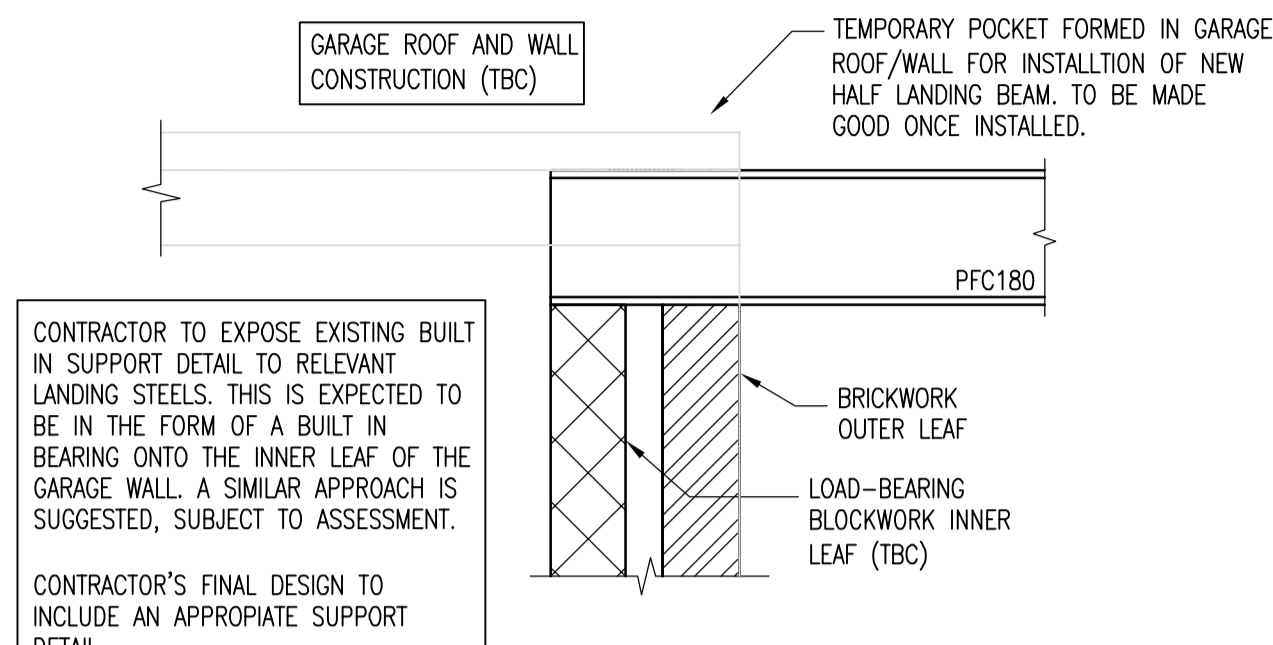
SITE MEASUREMENTS REQUIRED TO CONFIRM SETTING OUT OF EXISTING STRUCTURE



TYPICAL EXTERNAL WALL CONNECTION DETAIL

1:10

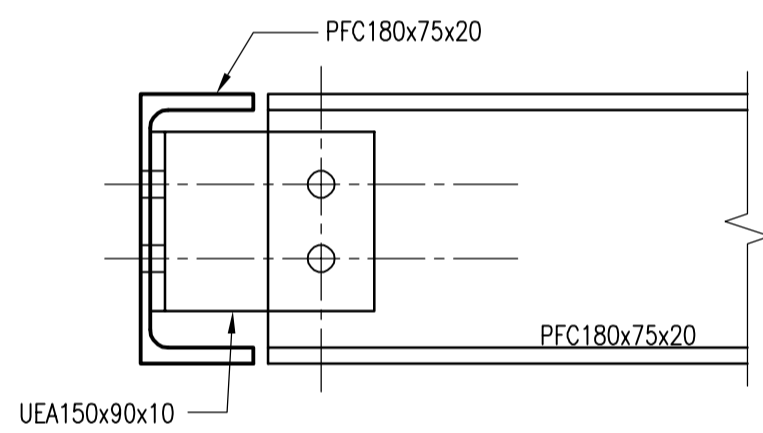
CONTRACTOR TO EXPOSE EXISTING BUILT IN SUPPORT DETAIL TO RELEVANT LANDING STEELS. THIS IS EXPECTED TO BE IN THE FORM OF A BUILT IN BEARING ONTO THE INNER LEAF OF THE MASONRY PERIMETER WALL. A SIMILAR APPROACH IS SUGGESTED, SUBJECT TO ASSESSMENT.
CONTRACTOR'S FINAL DESIGN TO INCLUDE AN APPROPRIATE SUPPORT DETAIL.



TYPICAL GARAGE ROOF CONNECTION DETAIL

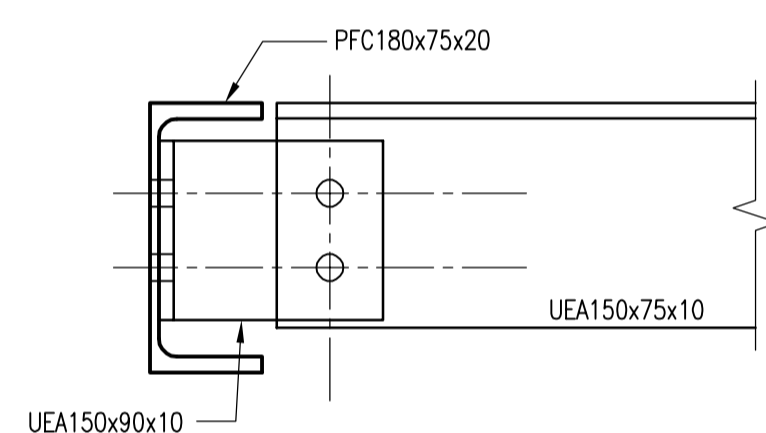
1:10

CONTRACTOR TO EXPOSE EXISTING BUILT IN SUPPORT DETAIL TO RELEVANT LANDING STEELS. THIS IS EXPECTED TO BE IN THE FORM OF A BUILT IN BEARING ONTO THE INNER LEAF OF THE GARAGE WALL. A SIMILAR APPROACH IS SUGGESTED, SUBJECT TO ASSESSMENT.
CONTRACTOR'S FINAL DESIGN TO INCLUDE AN APPROPRIATE SUPPORT DETAIL.



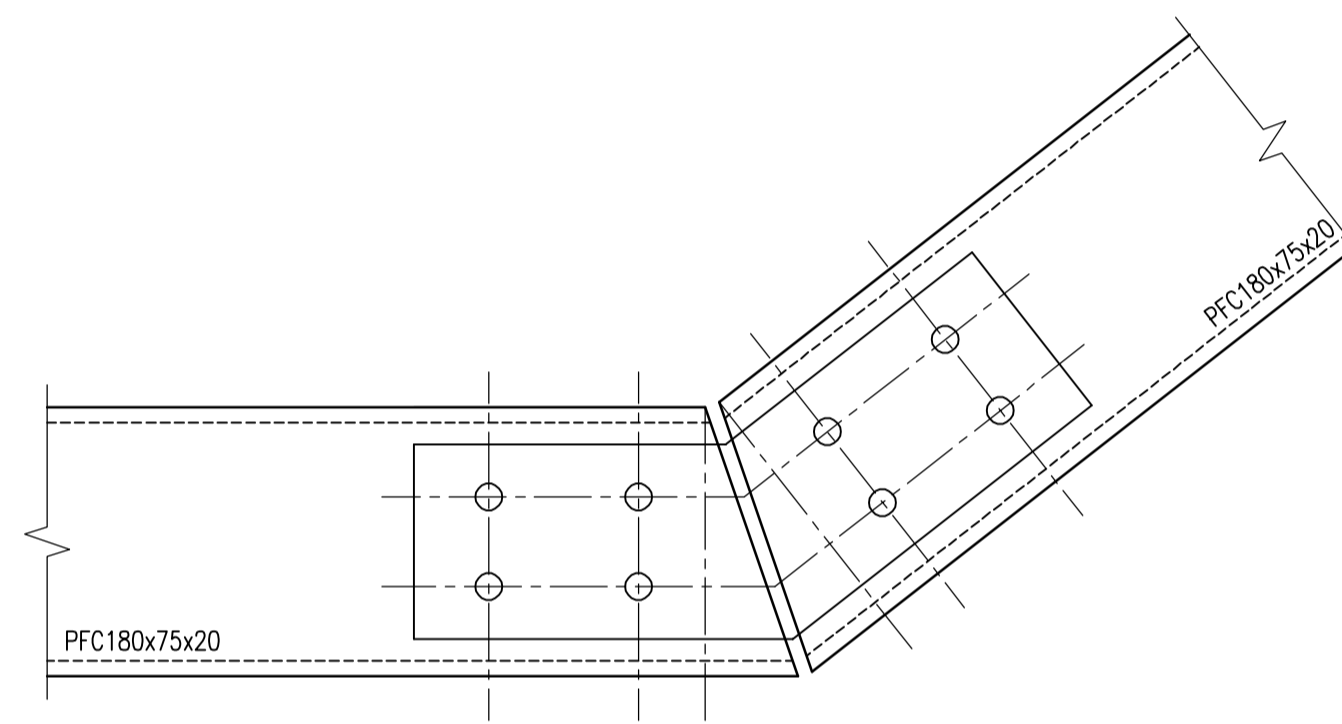
TYPICAL PFC TO PFC CONNECTION DETAIL

1:5



TYPICAL ANGLE TO PFC CONNECTION DETAIL

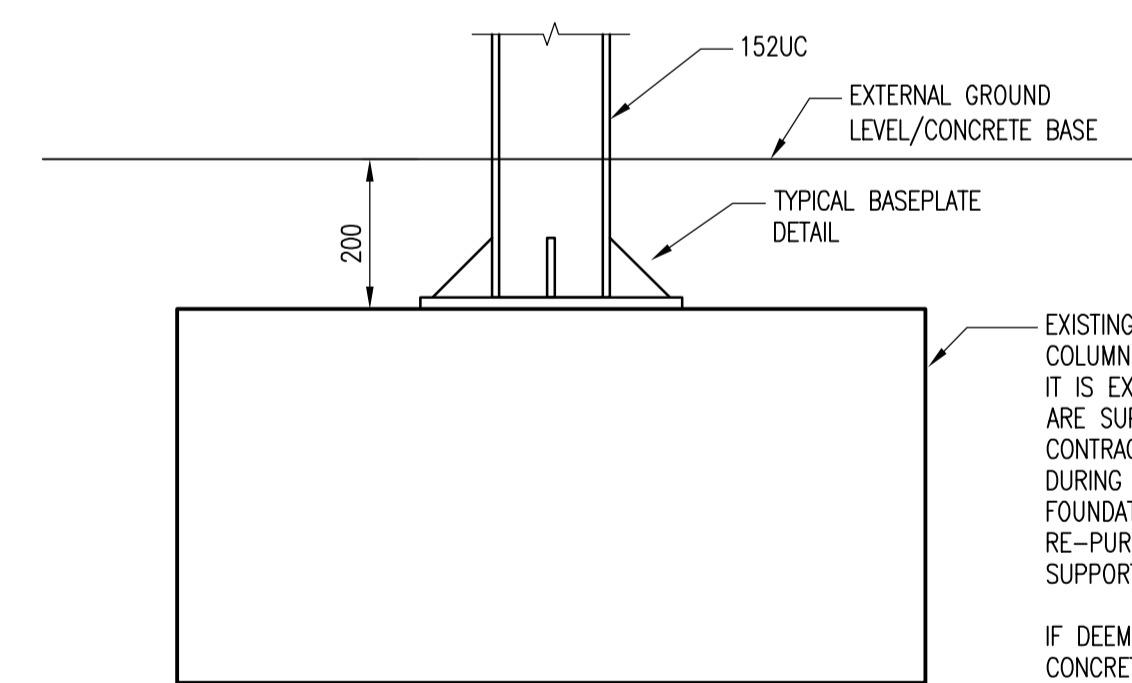
1:5



TYPICAL STAIR STRINGER SPLICE DETAIL

1:5

BOTH ENDS OF PFC'S TO HAVE 19 DEGREE CUT TO FORM 38 DEGREE SPLICE CONNECTION.
2No. 10mm SPLICE PLATE EITHER SIDE OF PFC WEB.
8No. M16 (8.8) BOLTS MINIMUM.

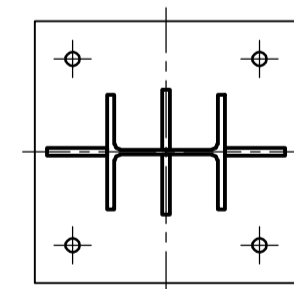


TYPICAL FOUNDATION DETAIL

1:10

EXISTING FOUNDATIONS TO STAIR COLUMNS ARE NOT KNOWN, HOWEVER IT IS EXPECTED THAT THE COLUMNS ARE SUPPORTED BY PAD FOUNDATIONS. CONTRACTOR TO EXPOSE FOUNDATIONS DURING DEMOLITION FOR INSPECTION. FOUNDATIONS TO BE ASSESSED AND RE-PURPOSED FOR NEW FRAME SUPPORT IF DEEMED SUITABLE.
IF DEEMED INADEQUATE, NEW MASS CONCRETE FOUNDATIONS WILL BE REQUIRED.

1000x1000x500 DEEP MASS CONCRETE PAD FOUNDATION CONCRETE GRADE C32/40



TYPICAL BASEPLATE DETAIL

1:10

350x350x15 THK BASEPLATE WITH 4No. 80x80x10 TRIANGULAR STIFFENERS
4No. M20 RESIN ANCHORS (200mm MIN EMBEDMENT) MINIMUM.

KEY TO HEALTH & SAFETY SYMBOLS

- ⚠ WARNING RISK INDICATES A RESIDUAL RISK AS A WARNING.
- ⓘ COMPULSORY RISK INDICATES A RESIDUAL RISK REQUIRING A COMPULSORY ACTION.
- ⊘ PROHIBITIVE RISK INDICATES A RESIDUAL RISK REQUIRING A PROHIBITIVE ACTION.
- ℹ INFORMATION RISK INDICATES A RESIDUAL RISK FOR INFORMATION.

REV	DATE	BY	DESCRIPTION	CHK	APP
01	19-10-20	NP	ISSUED FOR INFORMATION	MRB	LB

INFORMATION

The Mailbox, Level 2, 100 Wharfside Street, Birmingham, B1 1RT
T+ 44 (0) 121 352 4700, F+ 44 (0) 121 352 4701
wsp.com

CLIENT: **BARNET HOMES**

ARCHITECT: -

SITE/PROJECT: **DINSDALE COURT, BARNET REAR STAIRS REPLACEMENT**

TITLE: **STRUCTURAL STEELWORK TYPICAL DETAILS**

SCALE @ A1: 1:25	CHECKED: MRB	APPROVED: LB
PROJECT NO: 70064042	DESIGNED: NP	DRAWN: NP
		DATE: NOV 2020

DRAWING No: BH-WSP-XX-ZZ-DR-S-200801	REV: 01
---	----------------

© WSP UK Ltd