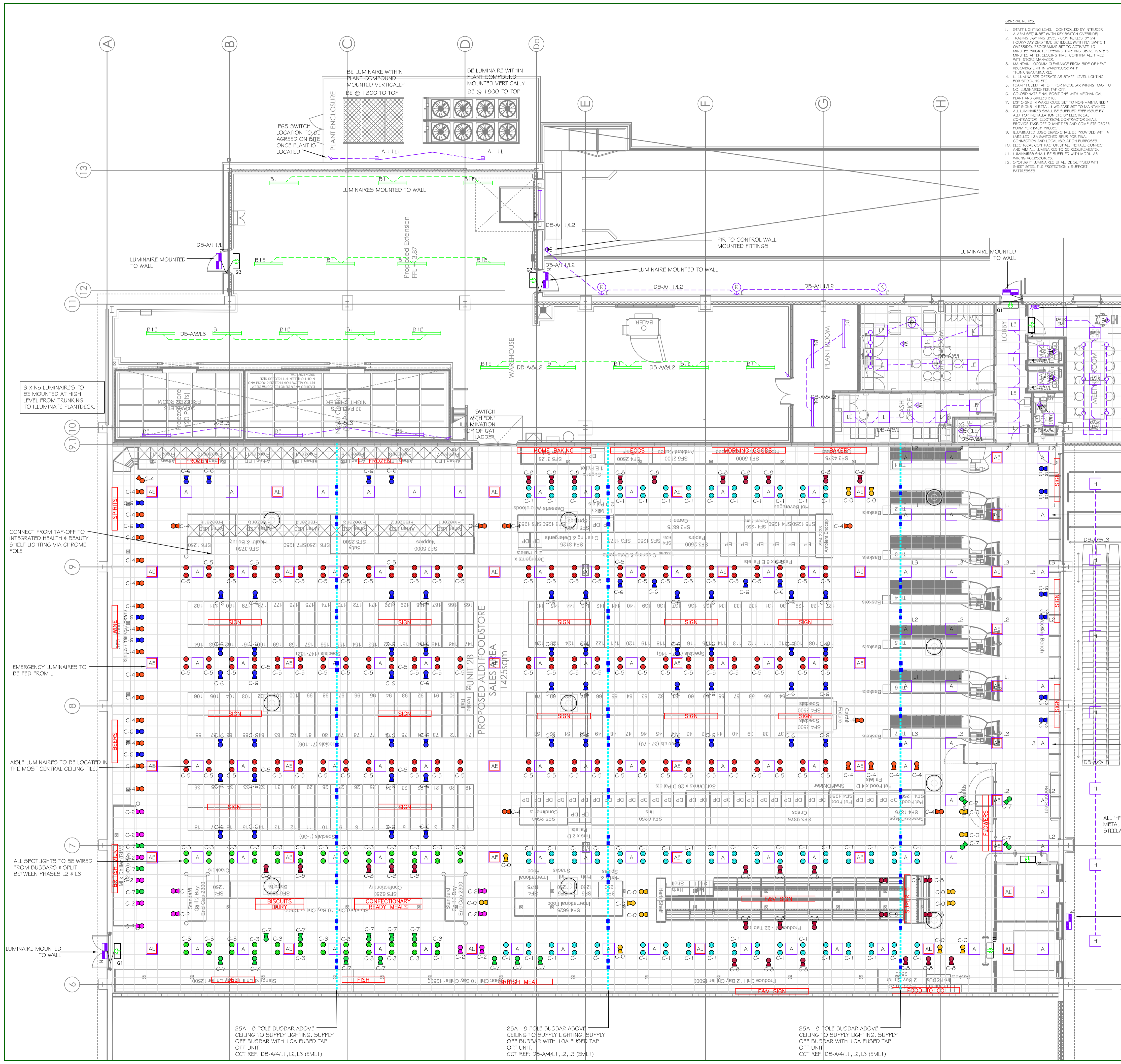
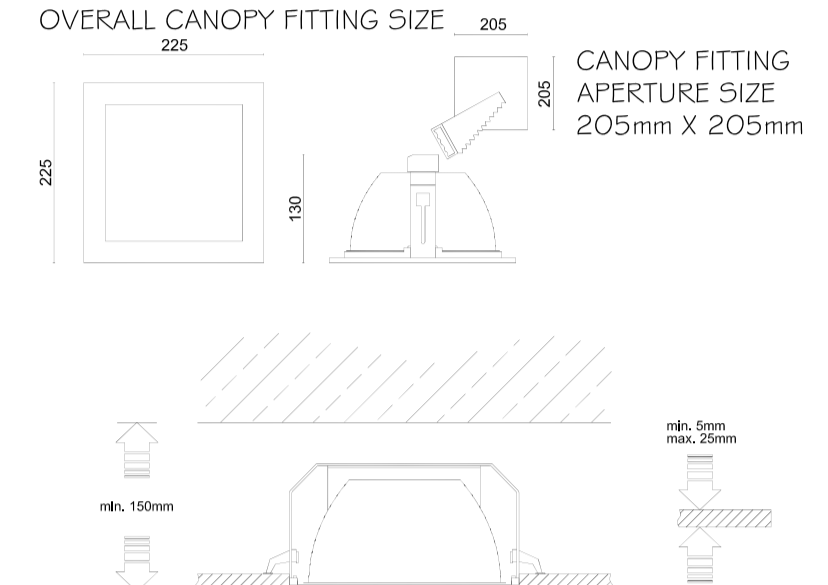


- GENERAL NOTES
- STAFF LIGHTING LEVEL - CONTROLLED BY INTRUDER ALARM DETECTOR WITH 24 HOUR OVERSIGHT
 - TRADING LIGHTING LEVEL - CONTROLLED BY 24 HOUR DAY TIME SCHEDULE WITH 24 HOUR OVERSIGHT. PROGRAMME SET TO ACTIVATE 10 MINUTES PRIOR TO OPENING TIME AND DEACTIVATE 5 MINUTES AFTER CLOSING TIME. CONFIRM ALL TIMES WITH STORE MANAGER
 - MAINTAIN 100MM CLEARANCE FROM SIDE OF HEAT RECOVERY UNIT IN WAREHOUSE WITH TRUNKING/LUMINAIRES
 - LUMINAIRES OPERATE AS STAFF LEVEL LIGHTING FOR STOCKING ETC
 - LOAMP FUSED TAP OFF FOR MODULAR WIRING. MAX 10 NO. LUMINAIRES PER TAP OFF
 - COORDINATE FINAL POSITIONS WITH MECHANICAL PLANT AND GRILLES ETC
 - DET SIGNS IN WAREHOUSE SET TO NON-MAINTAINED / EXIT SIGNS IN RETAIL & WAREHOUSE SET TO MAINTAINED
 - ALL LUMINAIRES SHALL BE SUPPLIED FREE ROSE BY ALO FOR INSTALLATION ETC BY ELECTRICAL CONTRACTOR. ELECTRICAL CONTRACTOR SHALL PROVIDE TAKE-OFF QUANTITIES AND COMPLETE ORDER FORM FOR EACH PROJECT
 - ILLUMINATED LOGO SIGNS SHALL BE PROVIDED WITH A LABELLED 10A SWITCHED BRUSH FOR FINAL CONNECTION AND LOCAL ISOLATION PURPOSES
 - ELECTRICAL CONTRACTOR SHALL RETAIL, CONNECT AND AIM ALL LUMINAIRES TO GC REQUIREMENTS
 - LUMINAIRES SHALL BE SUPPLIED WITH MODULAR WIRING ACCESSORIES
 - SPOTLIGHT LUMINAIRES SHALL BE SUPPLIED WITH SHEET STEEL PROTECTION & SUPPORT PATTERNS

| RETAIL LUMINAIRES LEGEND | |
|---|--|
| GE LIGHTING | DEXTRA LIGHTING |
| A 32 LUMINAIRE - 1000 RECESSED MODULAR LUMINAIRE - HIGH BAY 1500MM (H. 47W. 400MM. 8000) | L DEXTRA AUCALUM 4000 POLYCARBONATE (PMMA) IN MIDDLE WITH HT OPTIC - 400MM X 400MM X 400MM |
| B 45 AUCALUM WITH 100MM RECESSED BATTERY BACKUP | LE DEXTRA AUCALUM 4000 POLYCARBONATE (PMMA) IN MIDDLE WITH HT OPTIC - 400MM X 400MM X 400MM |
| C-0 SINGLE HEAD CUBICAL - 1100MM (H. 33.7W. 300. 4000 OPTIC) | B DEXTRA AUCALUM 4000 POLYCARBONATE (PMMA) IN MIDDLE WITH HT OPTIC - 400MM X 400MM X 400MM |
| C-1 TRAY HEAD CUBICAL - 1500MM (H. 45.4W. 300. 4000 OPTIC) | BE DEXTRA AUCALUM 4000 POLYCARBONATE (PMMA) IN MIDDLE WITH HT OPTIC - 400MM X 400MM X 400MM |
| C-2 TRAY HEAD CUBICAL - 2000MM (H. 10.5W. 300. 4000 OPTIC) | BI SURFACE MOUNTED - 1000MM X 400MM (H. 100MM) WITH HT OPTIC - 400MM X 400MM X 400MM |
| C-3 TRAY HEAD CUBICAL - 4000MM (H. 31.1W. 300. 4000 OPTIC) | BI SURFACE MOUNTED - 1000MM X 400MM (H. 100MM) WITH HT OPTIC - 400MM X 400MM X 400MM |
| C-4 SINGLE HEAD CUBICAL - 1000MM (H. 10.5W. 300. 4000 OPTIC) | BI SURFACE MOUNTED - 1000MM X 400MM (H. 100MM) WITH HT OPTIC - 400MM X 400MM X 400MM |
| C-5 TRAY HEAD CUBICAL - 4100MM (H. 31.1W. 300. 4000 OPTIC) | BI SURFACE MOUNTED - 1000MM X 400MM (H. 100MM) WITH HT OPTIC - 400MM X 400MM X 400MM |
| C-6 4000MM X 6000MM - 2000MM (H. 10.5W. 300. 4000 OPTIC) | BI SURFACE MOUNTED - 1000MM X 400MM (H. 100MM) WITH HT OPTIC - 400MM X 400MM X 400MM |
| C-7 4000MM X 6000MM - 2000MM (H. 10.5W. 300. 4000 OPTIC) | BI SURFACE MOUNTED - 1000MM X 400MM (H. 100MM) WITH HT OPTIC - 400MM X 400MM X 400MM |
| C-8 4000MM X 6000MM - 2000MM (H. 10.5W. 300. 4000 OPTIC) | BI SURFACE MOUNTED - 1000MM X 400MM (H. 100MM) WITH HT OPTIC - 400MM X 400MM X 400MM |
| C-9 4000MM X 6000MM - 2000MM (H. 10.5W. 300. 4000 OPTIC) | BI SURFACE MOUNTED - 1000MM X 400MM (H. 100MM) WITH HT OPTIC - 400MM X 400MM X 400MM |
| C-10 4000MM X 6000MM - 2000MM (H. 10.5W. 300. 4000 OPTIC) | BI SURFACE MOUNTED - 1000MM X 400MM (H. 100MM) WITH HT OPTIC - 400MM X 400MM X 400MM |



3 GANG MEETING ROOM: MODULAR FITTINGS ON PIR CONTROL WITH MANUAL OVERRIDE SPOTLIGHTS ON DIMMER CONTROL ONLY & FAN ON OFF SWITCH

MANUAL WALL SWITCH POSITION 1: ON/OFF VIA PIR POSITION 2: LIGHTS OFF

MEETING ROOM LIGHTS SHALL BE FITTED WITH ACOUSTIC HOODS

CHECKOUT AREA MODULAR LUMINAIRES TO BE SPREAD OVER 3 PHASES
L1 - STAFF LEVEL
L2 - TRADING LEVEL
L3 - TRADING LEVEL

CHECKOUT AREA MODULAR LUMINAIRES TO BE SPREAD OVER 3 PHASES
L1 - STAFF LEVEL
L2 - TRADING LEVEL
L3 - TRADING LEVEL

ALL "H" CANOPY LUMINAIRES RECESSED INTO METAL SOFFIT - CO-ORDINATE WITH STEELWORK SUPPORT POSITIONS

LUMINAIRE MOUNTED TO UNDERSIDE OF CANOPY FACING DOWN OVER DOOR

3 X No LUMINAIRES TO BE MOUNTED AT HIGH LEVEL FROM TRUNKING TO ILLUMINATE PLANTDECK.

CONNECT FROM TAP-OFF TO INTEGRATED HEALTH & BEAUTY SHELF LIGHTING VIA CHROME POLE

EMERGENCY LUMINAIRES TO BE FED FROM L1

AISLE LUMINAIRES TO BE LOCATED IN THE MOST CENTRAL CEILING TILE

ALL SPOTLIGHTS TO BE WIRED FROM BUSBARS & SPLIT BETWEEN PHASES L2 & L3

LUMINAIRE MOUNTED TO WALL

25A - 6 POLE BUSBAR ABOVE CEILING TO SUPPLY LIGHTING. SUPPLY OFF BUSBAR WITH 10A FUSED TAP OFF UNIT.
CCT REF: DB-A4/L1, L2, L3 (EML1)

25A - 6 POLE BUSBAR ABOVE CEILING TO SUPPLY LIGHTING. SUPPLY OFF BUSBAR WITH 10A FUSED TAP OFF UNIT.
CCT REF: DB-A4/L1, L2, L3 (EML1)

25A - 6 POLE BUSBAR ABOVE CEILING TO SUPPLY LIGHTING. SUPPLY OFF BUSBAR WITH 10A FUSED TAP OFF UNIT.
CCT REF: DB-A4/L1, L2, L3 (EML1)

| | | | |
|-----|--------------|----------|---------|
| T1 | TENDER ISSUE | 13/07/20 | J.P. |
| REV | DESCRIPTION | DATE | CHK/APP |
| 0 | | 0 | |
| 10 | | 10 | |
| 20 | | 20 | |
| 30 | | 30 | |
| 40 | | 40 | |
| 50 | | 50 | |
| 60 | | 60 | |
| 70 | | 70 | |
| 80 | | 80 | |

Rev T1

DWG N° SEM1039/E01

Issue TENDER

Scale 1:100@A1

Date JUL 20

SEM TECHNOLOGY

SEM Technology Limited
HQ
Clippers Quay
Salford Quays
M50 3XP

Tel: 0161 813 2560
Email: info@semtechnology.co.uk

ALDI FOODSTORES
HOLYOAKE AVENUE
BLACKPOOL

PROPOSED LIGHTING LAYOUT

© THIS DRAWING IS THE COPYRIGHT OF SEM TECHNOLOGY LTD. It shall not be in any way used or reproduced without their prior written consent. All dimensions are to be checked on site prior to commencing work. Work only to figured dimensions. All dimensions are in millimeters unless stated otherwise. Any discrepancies are to be reported to the Services Engineer.