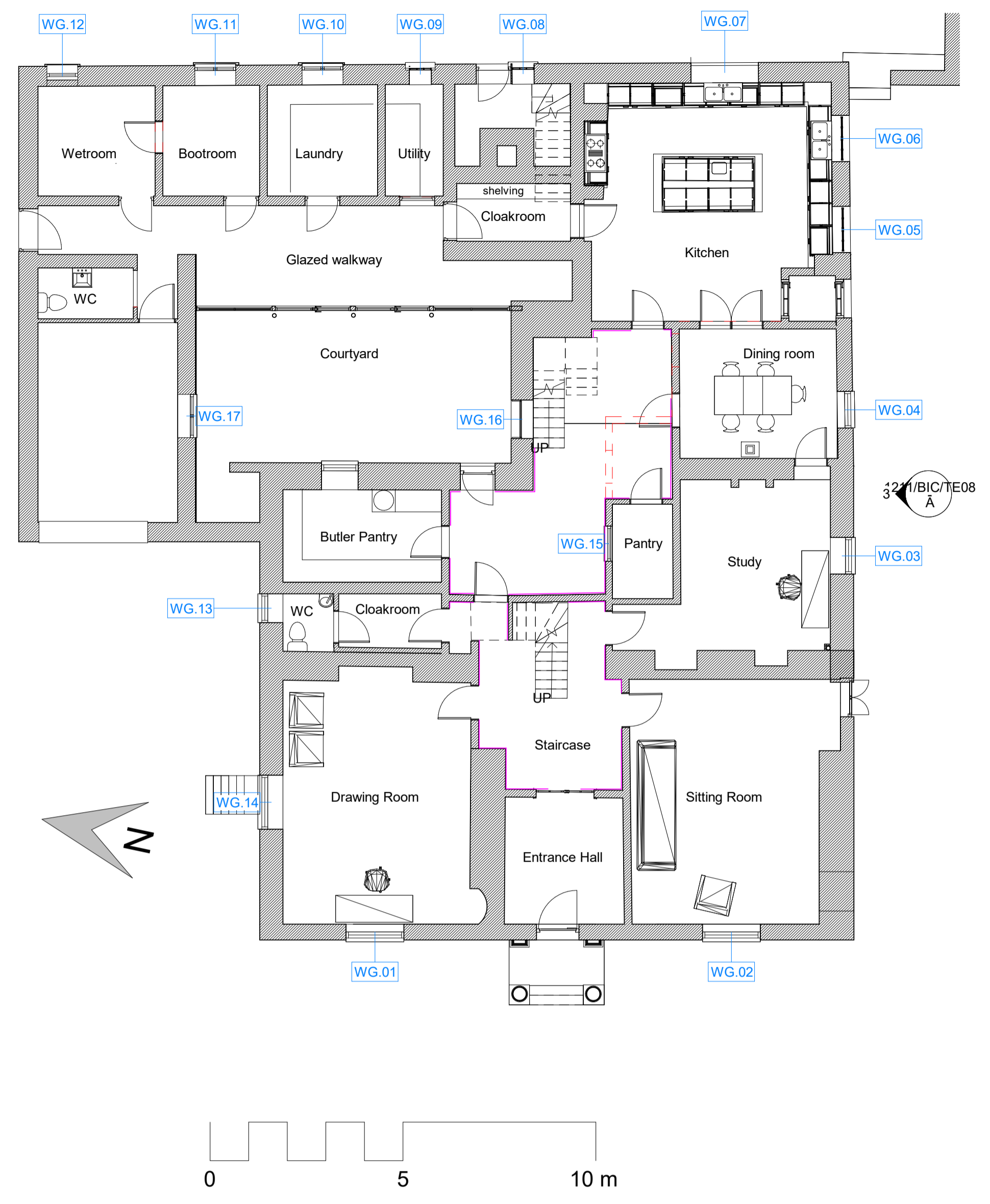
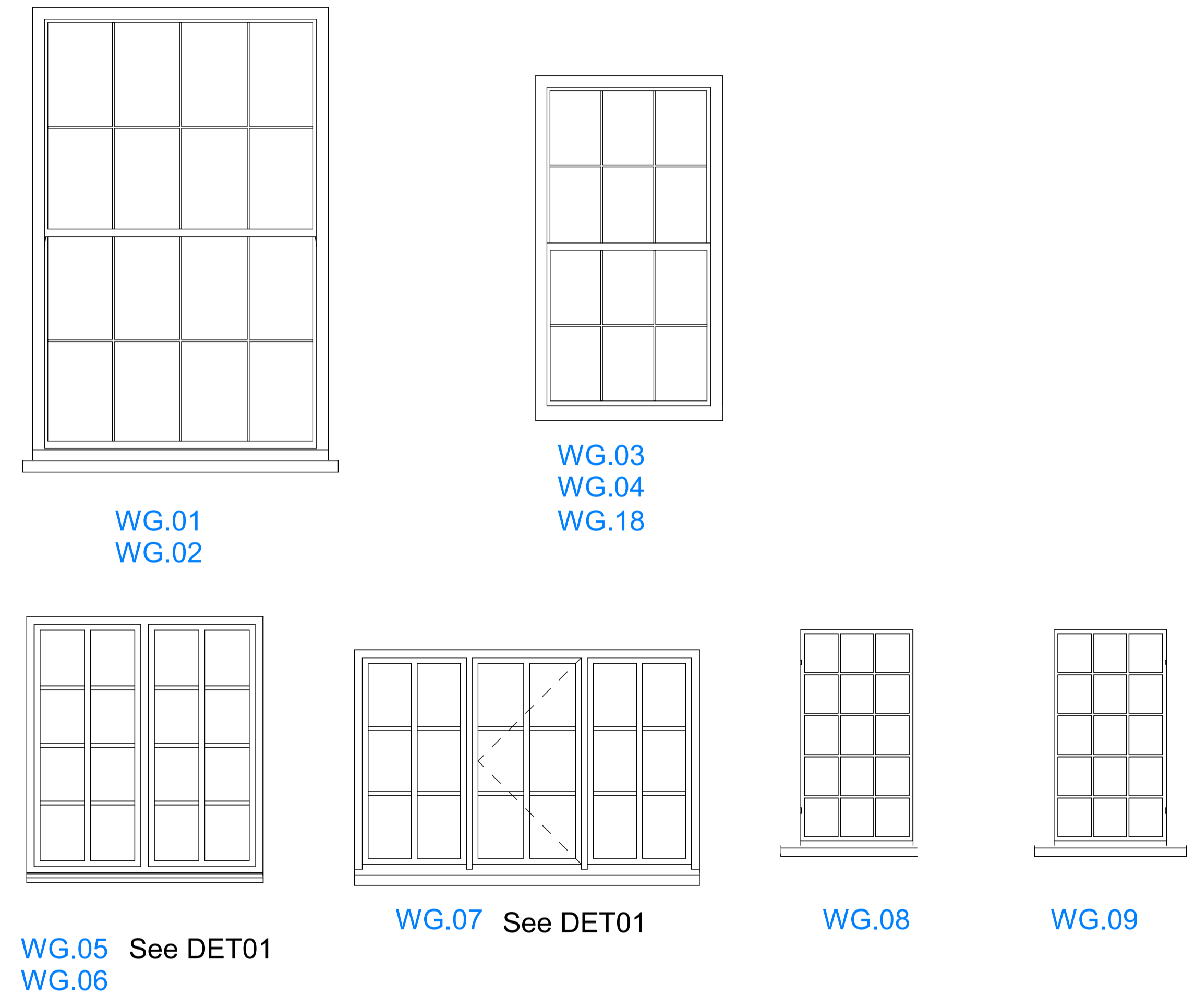


This drawing is for planning application purposes only.  
Do not scale from this drawing.  
All dimensions to be checked on site.  
Any structural alterations to be confirmed by a structural engineer.

| Ground Floor Window Schedule |       |        |             |   |
|------------------------------|-------|--------|-------------|---|
| Mark                         | Width | Height | Type        | Notes.  |
| WG.01                        | 1,500 | 2,300  | As Existing | Timber single glazed sash retained, repaired and painted                                    |
| WG.02                        | 1,500 | 2,300  | As Existing | Timber single glazed sash retained, repaired and painted                                    |
| WG.03                        | 950   | 1,750  | As Existing | Timber single glazed sash retained, repaired and painted                                    |
| WG.04                        | 950   | 1,750  | As Existing | Timber single glazed sash retained, repaired and painted                                    |
| WG.05                        | 1,200 | 1,350  | Proposed    | Slimlite glazed timber casement   |
| WG.06                        | 1,200 | 1,350  | Proposed    | Slimlite glazed timber casement   |
| WG.07                        | 1,750 | 1,150  | Proposed    | Slimlite glazed timber casement   |
| WG.08                        | 570   | 1,070  | Proposed    | Reclaimed steel framed leaded light window to match WG09 (being restored)                   |
| WG.09                        | 570   | 1,070  | As Existing | Steel and leaded light window retained, repaired and reinstated                             |
| WG.10                        | 1,060 | 1,070  | As Existing | Timber frame with C20 fixed glazing. Glazing removed and replaced with casement - see DET11 |
| WG.11                        | 1,060 | 1,070  | As Existing | Timber frame with C20 fixed glazing. Glazing removed and replaced with casement - see DET11 |
| WG.12                        | 800   | 1,070  | As Existing | Timber frame with C20 fixed glazing. Glazing removed and replaced with casement - see DET11 |
| WG.13                        | 750   | 1,650  | As Existing | Timber single glazed sash retained, repaired and painted                                    |
| WG.14                        | 1,400 | 2,300  | As Existing | Timber single glazed sash retained, repaired and painted                                    |
| WG.15                        | 910   | 910    | As Existing | Timber single glazed sash retained, repaired and painted                                    |
| WG.16                        | 1,000 | 1,450  | As Existing | Timber single glazed sash retained, repaired and painted                                    |
| WG.17                        | 1,120 | 1,070  | As Existing | Retained, repaired and painted  |
| WG.18                        | 950   | 1,750  | As Existing | Retained, repaired and painted  |

**PLEASE NOTE:**  
All sizes are approximate and should be checked on site prior to any new windows being made.

**Window Schedule**  
1:20



**Window Schedule**  
1:20

