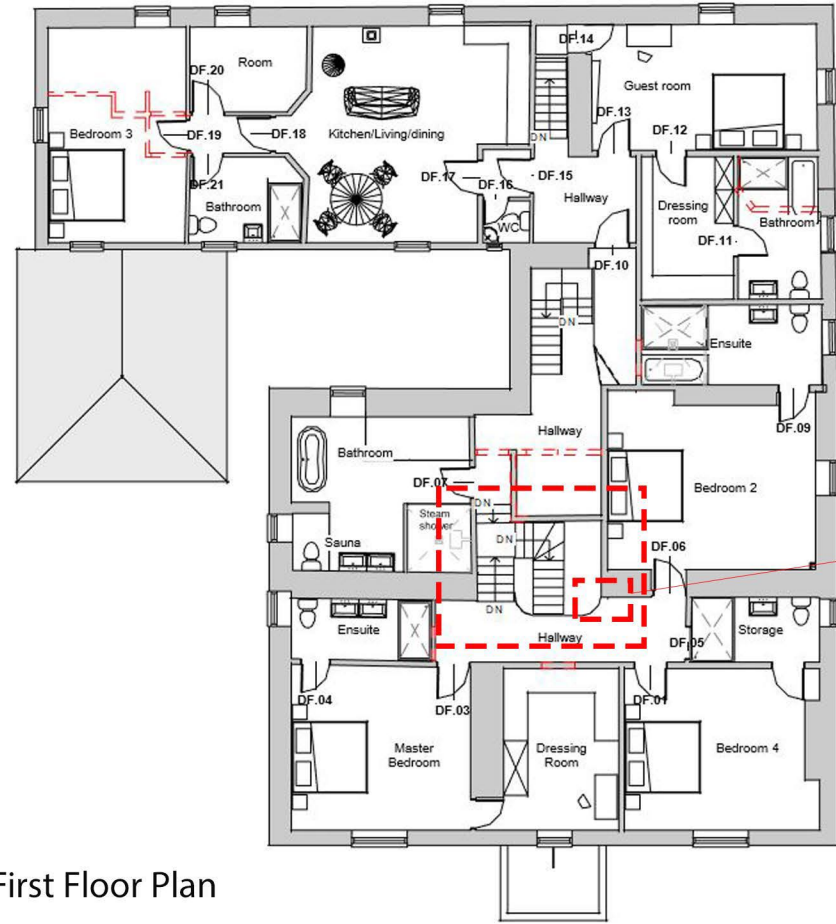
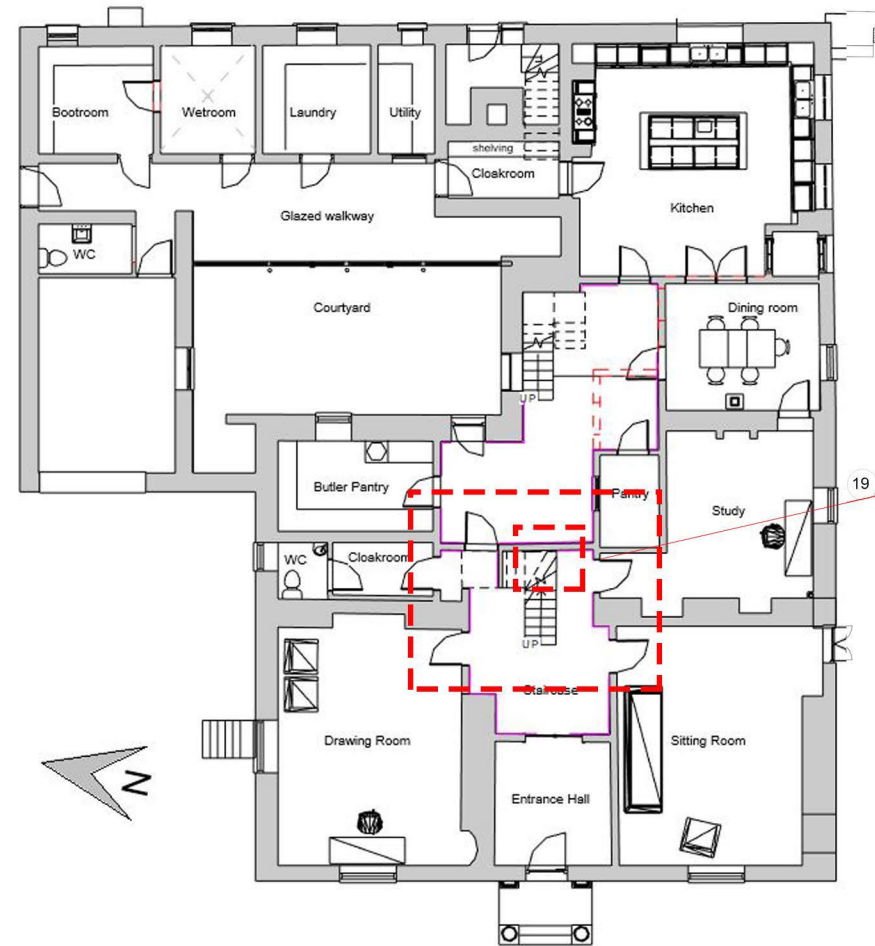


Proposed newel post to ground floor



1. First floor floating newel post



2. Ground floor handrail abuts the wall with a less elegant detail.

LIVING SPACE ARCHITECTS

On the ground floor the stair may have previously been altered, which has resulted in a crude detail where the balustrade joins the wall.

It is proposed to exactly replete the floating newel post on the first floor landing and insert this at the junction between the handrail and the wall on the ground floor.



Bickleigh House
211/BIC/DET03/A
Proposed Newel Post Detail
A3 Sheet - Not to scale

21/12/2020