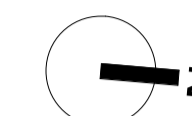
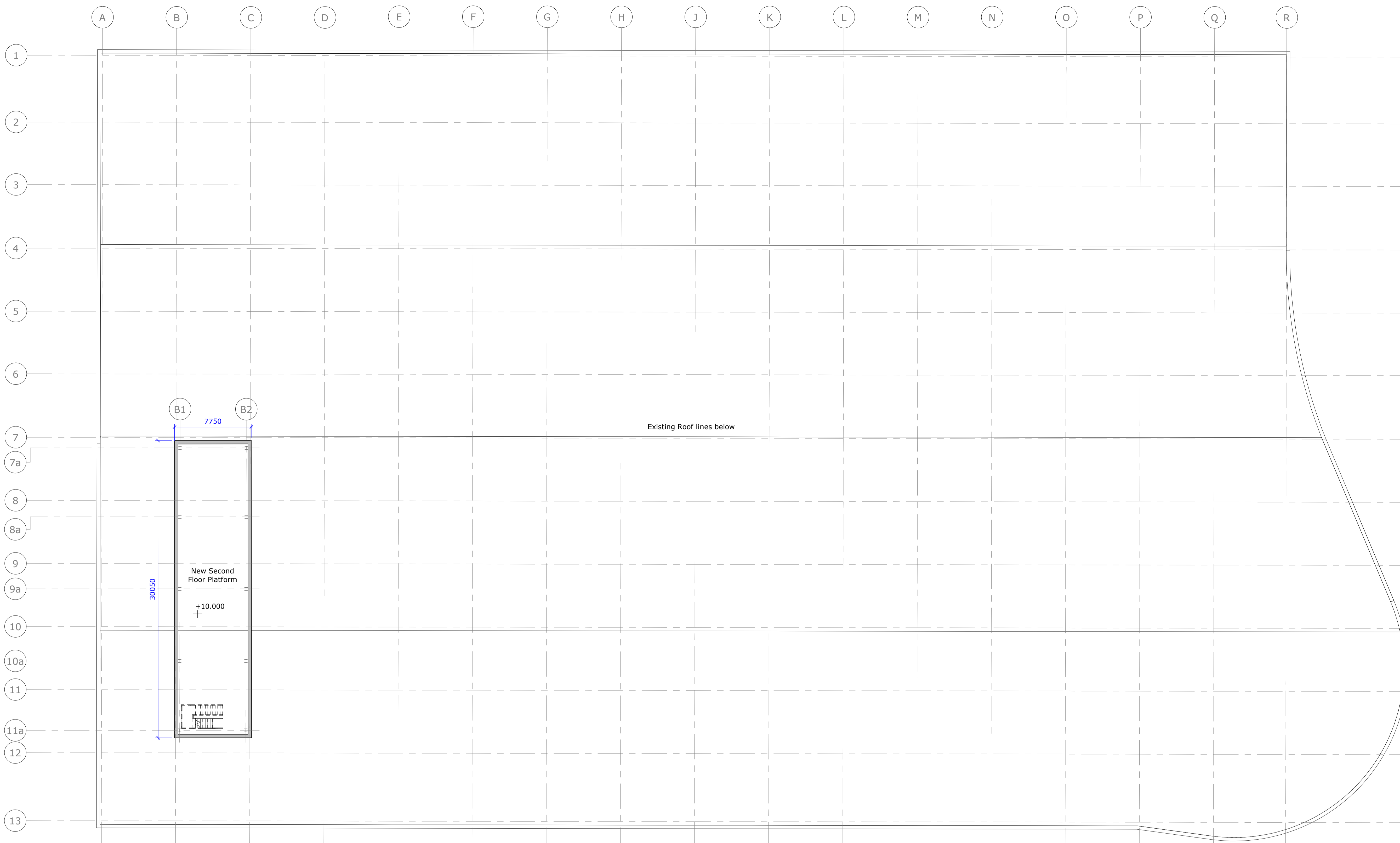
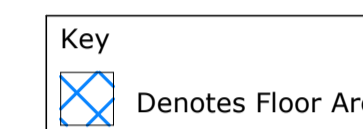


NOTES:

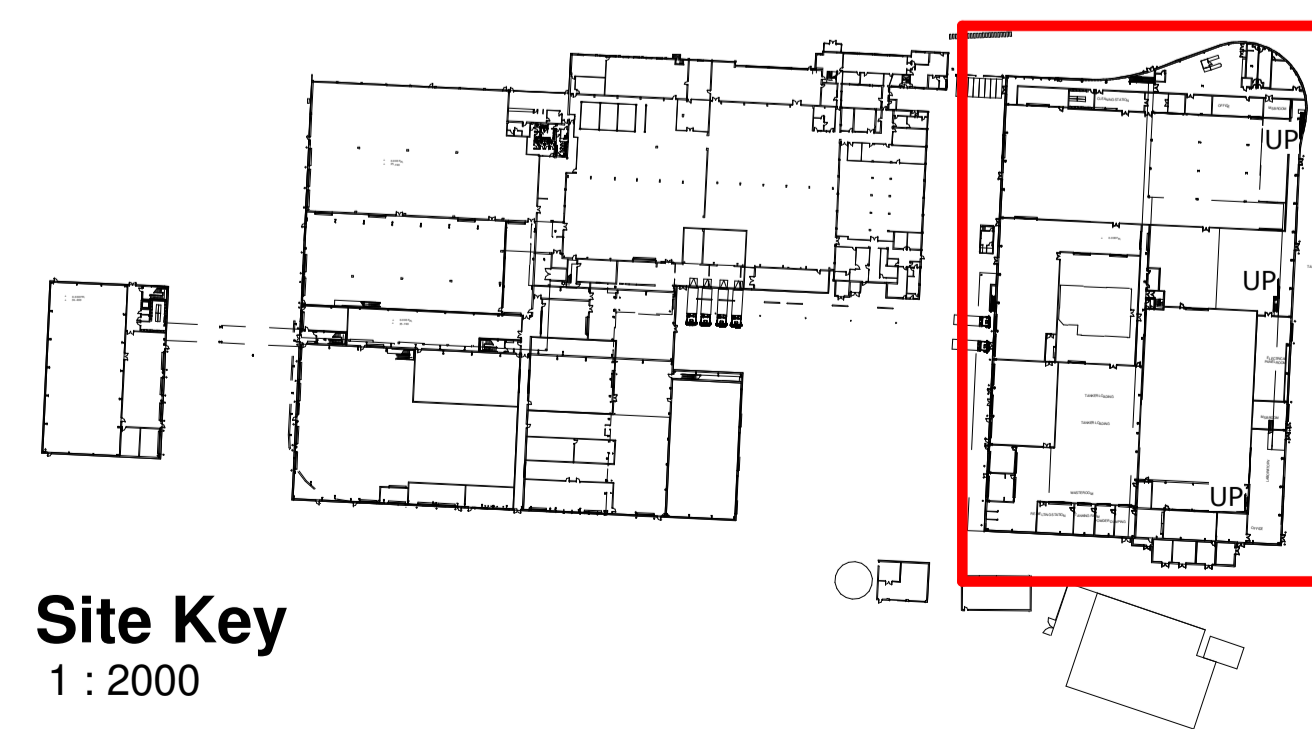
1. If this drawing has been received electronically it is the recipients responsibility to print the document to the correct scale.
2. All dimensions are in millimetres unless stated otherwise. It is recommended that information is not scaled off this drawing.
3. This drawing should be read in conjunction with all other relevant drawings and specifications.



Proposed Second Floor GIA - 209m²



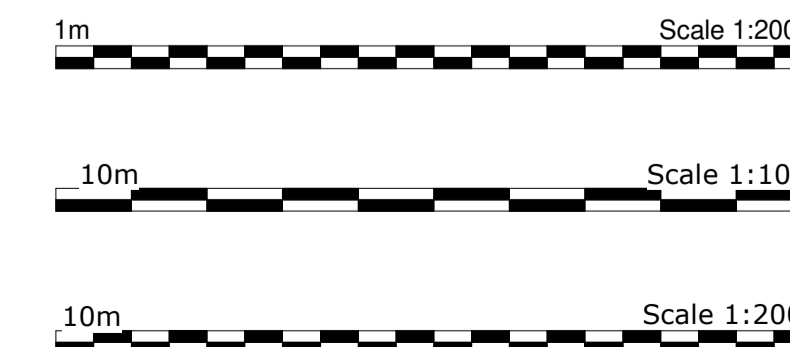
Proposed Second Floor Plan
1 : 200



Site Key
1 : 2000



Scope Key Plan
1 : 1000



P03	SH	KB	KB	18/01/21
Minor amendments for planning application				
P02	SH	KB	KB	08/01/21
Updated to suit clients comments.				
P01	SH	KB	KB	14/12/20
Planning Issue.				
Rev	Drawn By:	Checked By:	Approved By:	Date:
Amendments				
Project: GCB Cocoa Production Facility, Glemsford				
Title: Proposed Chocolate Building Second Floor Plan				
Drawing Number:				
Identification / Location:		Sheet Number:		
Project Code:	Originator Code:	Vol / Zone:	Level:	Type:
GCB	BED	Z2	02	DR
				A
				1207

Rev Description:	Status Code:	Model Ref:	Rev No:
Preliminary	S0	ARC02	P03
Scale:	Sheet:	Discipline:	BED Project Number:
1:200	A1	Architectural	NWK 200063

