


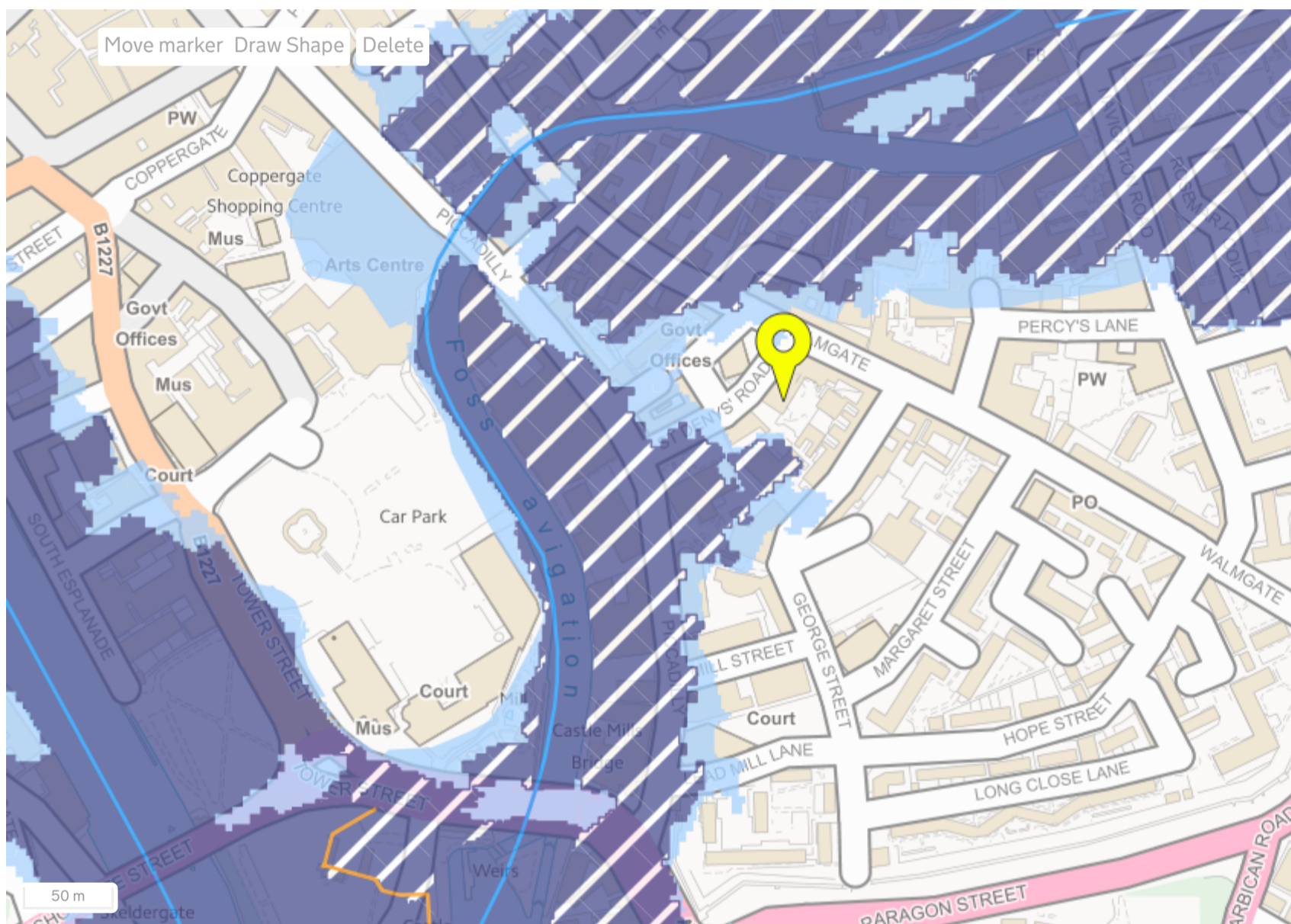
BETA This is a new service – your [feedback](/feedback) will help us to improve it.

Likelihood of flooding in this area

You can move the marker  on the map to identify a specific location. Alternatively draw a shape to identify an approximate site boundary.

► [How to draw a shape](#)

[Download printable map \(PDF\)](#)



Show flood zones

[View flood zone summary map and more guidance](/summary?easting=460741&northing=451549)

You can use this information as part of a [flood risk assessment for a planning application](https://www.gov.uk/guidance/flood-risk-assessment-for-planning-applications#when-you-need-an-assessment) (<https://www.gov.uk/guidance/flood-risk-assessment-for-planning-applications#when-you-need-an-assessment>)