

Equipment	Manufacturer	Model	Serial Number	MSR REF	Date of Calibration
EM1 Transmitter	EM1	EM1	1071-108-7795	RD12	10/07/2010
EM1 Rx Receiver	SFR	Substation	108170L-472	RD12	10/07/2010
GPR	EGS	Intercept	010	CPM2	10/09/2010

### DETECTION SURVEY REPORT

**GENERAL**  
This survey was carried out in accordance with PAS 128:2014 (Publicly Available Specification from BS) After a pre-survey consultation with the client it was agreed to carry out the detection survey using methodology M1 as per Table 2 of the PAS 128:2014. The survey boundary has been shown on the drawing; please see Invariable section of the key for reference.

**DESKTOP UTILITY REPORT**  
Prior to the survey commencing record information was gathered and compiled in a separate desktop utility report. This report should be read in conjunction with the information contained in this utility detection survey. Record information was at the time of the survey less than 90 days old in accordance with the requirements of the PAS 128:2014. For a full list of the providers searched, records received and the dates the information was obtained, please refer to the attachments page of the desktop utility report.

In addition the client has provided MK Surveys with historical record information. As per PAS 128:2014 this record information is classed as historical and must be referenced with extreme caution. There is no guarantee of the completeness and accuracy of the information. Site staff provided further local knowledge.

**DETECTION SURVEY**  
**DRAINAGE**  
Drainage was lifted with pipe sizes and invert levels recorded. Wherever possible the chamber sizes have been recorded and positioned on the drawing. All connections from gullies, external downpipes, pipes and external soil stacks have been possible into manholes and sewer runs by radio sonde location and/or GPR. Where a saddle connection is present the position is assumed only until proven to QED or above. In instances where other detection methods were unsuccessful connections between manholes have been assumed to be straight and labeled as QAS. All drainage should be cross checked in critical areas by CCTV survey or verification survey type A. MIs found within the property of house No.121 were assumed to be as follows and shown on the drawing.

**WATER**  
Water network within the survey area have been located using EM1 and GPR methodologies with depths recorded where possible. Where water pipes were unable to be detected the position has been drawn in relation to the supplied utility record information. Assumed records have been added to show water supply to houses. Unable to trace the water pipes found in the south-west corner of the field due to vegetation blocking access. Recommended trial excavations to confirm depth and position in critical areas.

**GAS**  
Gas network within the survey area was not able to be located using GPR methodologies. The position has been drawn in relation to the supplied utility record information. Recommended trial excavations to confirm depth and position in critical areas.

**ELECTRICITY**  
Electric cables within the survey area have been located using EM1 methods with electronically derived depths recorded. LV found within garden of house No. 121. No trace of this LV is found using either EM1 or GPR past in the trees at the end of the garden. The record of house No.121 confirmed having no electricity in the shed at the bottom of the garden. The garage and summerhouse within the property have cables overhead entering them from the back. Recommended trial excavations to confirm depth and position in critical areas.

**TELECOM**  
Telecom ducts have been traced with depths recorded. Due to low protecting British Telecom apparatus ducts have been located using remote detection techniques only and compared with record information. Chamber sizes have been recorded using GPR techniques wherever possible. For further information regarding BT apparatus please contact Openreach directly.

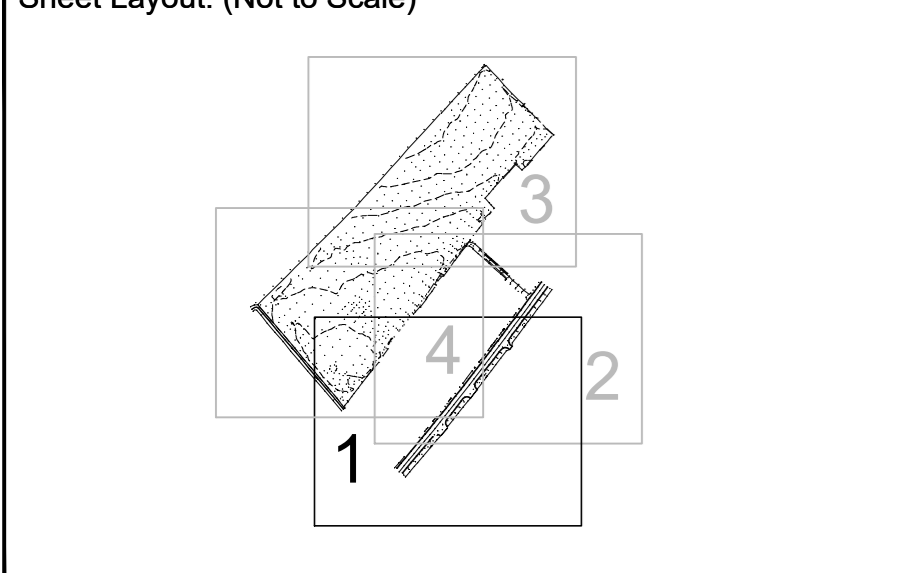
**CATV**  
No evidence of CATV assets identified within site boundary. Record information confirms this.

**UNKNOWN**  
Some unknown targets identified on the drawing using GPR are classified as "non-linear targets". These are not correlated with what we expect to see when identifying a buried utility, and appear on the drawing as single targets with depths (i.e. not linking two or more depth readings). This does not mean they are not utilities, we are just unable to positively identify them as a utility. We would strongly recommend that further verification surveys (PAS 128:2014 survey type A) are carried out to identify these targets in critical areas. An unknown service was located in the entrance to the field and pinging onto a utility running through the gardens of the house.

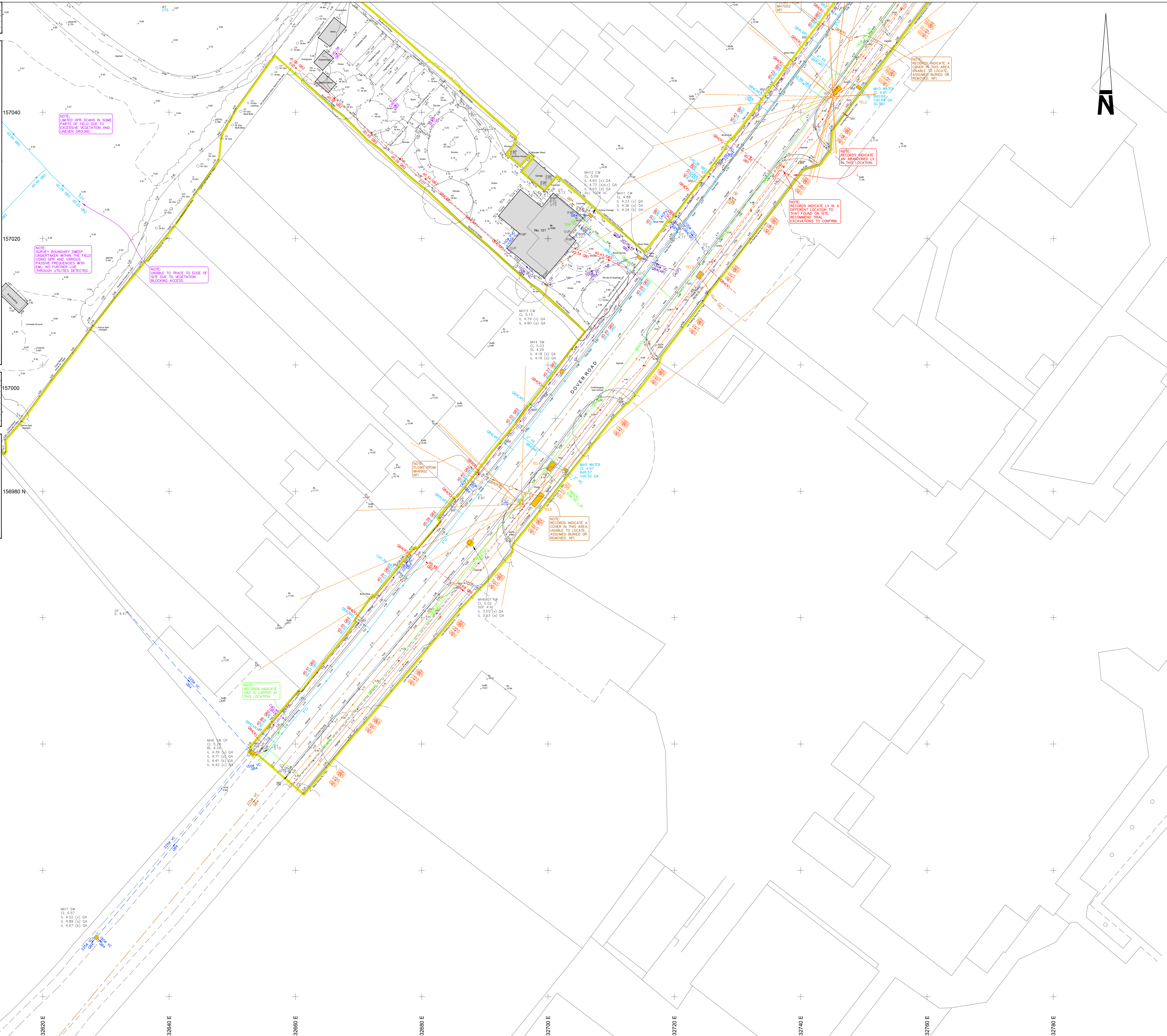
SEE CAUTIONARY NOTES WITHIN THE UTILITY KEY

Utility Type	Provider Details	Date Acquired
Drainage	Southern Water	10/09/2010
Water	Southern Water	10/09/2010
Gas	British Gas Networks	10/09/2010
Electricity	UK Power Networks	10/09/2010
Telecom	Openreach	10/09/2010
CATV	Virgin Media	10/09/2010
Water	Transport for London Land Registry	December 1982

### Sheet Layout: (Not to Scale)



156980N  
156940 N  
156900 N  
156860N  
156820 N  
156780 N  
632600 E  
632620 E  
632640 E  
632660 E  
632680 E  
632700 E  
632720 E  
632740 E  
632760 E  
632780 E



- Notes:**
- UTILITY AND SERVICE INFORMATION ADDED TO TOPOGRAPHICAL SURVEY PRODUCED BY OMEGA GEOMATICS. JOB No. 16-013. DATE AUGUST 2016. NO SITE VERIFICATION CARRIED OUT BY MK SURVEYS.
  - THIS SURVEY SHOULD ALWAYS BE READ IN CONJUNCTION WITH THE DESKTOP UTILITY REPORT. THAT WAS CARRIED OUT AS A PREREQUISITE TO THE DETECTION SURVEY.

GENERAL	PIPE MATERIALS
AW AIRWAGE	AC ASBESTOS CEMENT
CW CORRUGATED WALL	AL ALUMINIUM
CB COMBINED WATER	BC BRICK
CC CAST IRON	CK CONCRETE
DL DROP FIBRE	CL CONCRETE
EL ELECTROMAGNETIC LOCATOR	CM CORRUGATED METAL
EM ELECTROMAGNETIC	CP CORRUGATED POLYESTER
FO FIBRE OPTIC	MP MEDIUM DENSITY FIBRE
FR FOLIA WATER	PE POLYETHYLENE
FW FOLIA WATER	PF POLYPROPYLENE
GPR GROUND PENETRATING RADAR	PP POLYPROPYLENE
GR GRANITE	PC POLYURETHANE
HP HIGH PRESSURE	PI POLYIMIDE
HS HIGH STRENGTH	PL POLYESTER
IP INTERMEDIATE PRESSURE	PT POLYURETHANE
LP LOW PRESSURE	TC THERMOPLASTIC
LV LOW VOLTAGE	UB UNIDENTIFIED BURIED
MC MEDIUM PRESSURE	UC UNIDENTIFIED BURIED
ND NO DEPTH INFORMATION	VC VERIFIED
NEU NEUTRAL INFORMATION	WV WATER
NO NO DATA AVAILABLE	
OV OVERHEAD	
PO PIPE OR WIRE	
PR PRELIMINARY	
RD RESIDUAL SERVICE	
RF RADIO FREQUENCY	
SB SOFT BED	
SM STREET MANNER PLATE	
TAC TACTILE PAVING	
TW TRADE EFFLUENT WATER	
UN UNABLE TO TRACE	
UTR UNABLE TO TRACE	
VA VARIABLE TO SURFACE	
VP VERIFIED	
WV WATER	

APPARATUS	LEVELS	LINESTYLE
ACU AIR CONDITIONING UNIT	EL ELEVATION	UTILITY CROSSOVER
BB BELSHAM BEACON	BS BASE LEVEL	UNKNOWN SERVICE
BO BOLLARD	CH CHAMBER LEVEL	VERBAL INFORMATION
BOL BOLLARD LIGHT	CHN CHAMBER INVERT	RECORD INFORMATION
CB CABLE TELEVISION	CHS CHAMBER TO SURFACE	RECORD INFORMATION
CA CONTROL BOX	CHT CHAMBER TO TRAP	RECORD INFORMATION
CC CONTROL BOX	CHV CHAMBER TO VALVE	RECORD INFORMATION
CD CONTROL BOX	CHW CHAMBER TO WELL	RECORD INFORMATION
CE CONTROL BOX	CHX CHAMBER TO UNKNOWN	RECORD INFORMATION
CF CONTROL BOX	CHY CHAMBER TO YARD	RECORD INFORMATION
CG CONTROL BOX	CHZ CHAMBER TO ZONE	RECORD INFORMATION
CH CATCH PIT	CH1 CHAMBER 1	RECORD INFORMATION
CI CONTROL BOX	CH2 CHAMBER 2	RECORD INFORMATION
CL CONTROL BOX	CH3 CHAMBER 3	RECORD INFORMATION
CM CONTROL BOX	CH4 CHAMBER 4	RECORD INFORMATION
CO CONTROL BOX	CH5 CHAMBER 5	RECORD INFORMATION
CP CONTROL BOX	CH6 CHAMBER 6	RECORD INFORMATION
CQ CONTROL BOX	CH7 CHAMBER 7	RECORD INFORMATION
CR CONTROL BOX	CH8 CHAMBER 8	RECORD INFORMATION
CS CONTROL BOX	CH9 CHAMBER 9	RECORD INFORMATION
CT CONTROL BOX	CH0 CHAMBER 0	RECORD INFORMATION
CU CONTROL BOX	CH1 CHAMBER 1	RECORD INFORMATION
CV CONTROL BOX	CH2 CHAMBER 2	RECORD INFORMATION
CW CONTROL BOX	CH3 CHAMBER 3	RECORD INFORMATION
CX CONTROL BOX	CH4 CHAMBER 4	RECORD INFORMATION
CY CONTROL BOX	CH5 CHAMBER 5	RECORD INFORMATION
CZ CONTROL BOX	CH6 CHAMBER 6	RECORD INFORMATION
CA CONTROL BOX	CH7 CHAMBER 7	RECORD INFORMATION
CB CONTROL BOX	CH8 CHAMBER 8	RECORD INFORMATION
CC CONTROL BOX	CH9 CHAMBER 9	RECORD INFORMATION
CD CONTROL BOX	CH0 CHAMBER 0	RECORD INFORMATION
CE CONTROL BOX	CH1 CHAMBER 1	RECORD INFORMATION
CF CONTROL BOX	CH2 CHAMBER 2	RECORD INFORMATION
CG CONTROL BOX	CH3 CHAMBER 3	RECORD INFORMATION
CH CONTROL BOX	CH4 CHAMBER 4	RECORD INFORMATION
CI CONTROL BOX	CH5 CHAMBER 5	RECORD INFORMATION
CJ CONTROL BOX	CH6 CHAMBER 6	RECORD INFORMATION
CK CONTROL BOX	CH7 CHAMBER 7	RECORD INFORMATION
CL CONTROL BOX	CH8 CHAMBER 8	RECORD INFORMATION
CM CONTROL BOX	CH9 CHAMBER 9	RECORD INFORMATION
CN CONTROL BOX	CH0 CHAMBER 0	RECORD INFORMATION
CO CONTROL BOX	CH1 CHAMBER 1	RECORD INFORMATION
CP CONTROL BOX	CH2 CHAMBER 2	RECORD INFORMATION
CQ CONTROL BOX	CH3 CHAMBER 3	RECORD INFORMATION
CR CONTROL BOX	CH4 CHAMBER 4	RECORD INFORMATION
CS CONTROL BOX	CH5 CHAMBER 5	RECORD INFORMATION
CT CONTROL BOX	CH6 CHAMBER 6	RECORD INFORMATION
CU CONTROL BOX	CH7 CHAMBER 7	RECORD INFORMATION
CV CONTROL BOX	CH8 CHAMBER 8	RECORD INFORMATION
CW CONTROL BOX	CH9 CHAMBER 9	RECORD INFORMATION
CX CONTROL BOX	CH0 CHAMBER 0	RECORD INFORMATION
CY CONTROL BOX	CH1 CHAMBER 1	RECORD INFORMATION
CZ CONTROL BOX	CH2 CHAMBER 2	RECORD INFORMATION
CA CONTROL BOX	CH3 CHAMBER 3	RECORD INFORMATION
CB CONTROL BOX	CH4 CHAMBER 4	RECORD INFORMATION
CC CONTROL BOX	CH5 CHAMBER 5	RECORD INFORMATION
CD CONTROL BOX	CH6 CHAMBER 6	RECORD INFORMATION
CE CONTROL BOX	CH7 CHAMBER 7	RECORD INFORMATION
CF CONTROL BOX	CH8 CHAMBER 8	RECORD INFORMATION
CG CONTROL BOX	CH9 CHAMBER 9	RECORD INFORMATION
CH CONTROL BOX	CH0 CHAMBER 0	RECORD INFORMATION
CI CONTROL BOX	CH1 CHAMBER 1	RECORD INFORMATION
CJ CONTROL BOX	CH2 CHAMBER 2	RECORD INFORMATION
CK CONTROL BOX	CH3 CHAMBER 3	RECORD INFORMATION
CL CONTROL BOX	CH4 CHAMBER 4	RECORD INFORMATION
CM CONTROL BOX	CH5 CHAMBER 5	RECORD INFORMATION
CN CONTROL BOX	CH6 CHAMBER 6	RECORD INFORMATION
CO CONTROL BOX	CH7 CHAMBER 7	RECORD INFORMATION
CP CONTROL BOX	CH8 CHAMBER 8	RECORD INFORMATION
CQ CONTROL BOX	CH9 CHAMBER 9	RECORD INFORMATION
CR CONTROL BOX	CH0 CHAMBER 0	RECORD INFORMATION
CS CONTROL BOX	CH1 CHAMBER 1	RECORD INFORMATION
CT CONTROL BOX	CH2 CHAMBER 2	RECORD INFORMATION
CU CONTROL BOX	CH3 CHAMBER 3	RECORD INFORMATION
CV CONTROL BOX	CH4 CHAMBER 4	RECORD INFORMATION
CW CONTROL BOX	CH5 CHAMBER 5	RECORD INFORMATION
CX CONTROL BOX	CH6 CHAMBER 6	RECORD INFORMATION
CY CONTROL BOX	CH7 CHAMBER 7	RECORD INFORMATION
CZ CONTROL BOX	CH8 CHAMBER 8	RECORD INFORMATION
CA CONTROL BOX	CH9 CHAMBER 9	RECORD INFORMATION
CB CONTROL BOX	CH0 CHAMBER 0	RECORD INFORMATION
CC CONTROL BOX	CH1 CHAMBER 1	RECORD INFORMATION
CD CONTROL BOX	CH2 CHAMBER 2	RECORD INFORMATION
CE CONTROL BOX	CH3 CHAMBER 3	RECORD INFORMATION
CF CONTROL BOX	CH4 CHAMBER 4	RECORD INFORMATION
CG CONTROL BOX	CH5 CHAMBER 5	RECORD INFORMATION
CH CONTROL BOX	CH6 CHAMBER 6	RECORD INFORMATION
CI CONTROL BOX	CH7 CHAMBER 7	RECORD INFORMATION
CJ CONTROL BOX	CH8 CHAMBER 8	RECORD INFORMATION
CK CONTROL BOX	CH9 CHAMBER 9	RECORD INFORMATION
CL CONTROL BOX	CH0 CHAMBER 0	RECORD INFORMATION
CM CONTROL BOX	CH1 CHAMBER 1	RECORD INFORMATION
CN CONTROL BOX	CH2 CHAMBER 2	RECORD INFORMATION
CO CONTROL BOX	CH3 CHAMBER 3	RECORD INFORMATION
CP CONTROL BOX	CH4 CHAMBER 4	RECORD INFORMATION
CQ CONTROL BOX	CH5 CHAMBER 5	RECORD INFORMATION
CR CONTROL BOX	CH6 CHAMBER 6	RECORD INFORMATION
CS CONTROL BOX	CH7 CHAMBER 7	RECORD INFORMATION
CT CONTROL BOX	CH8 CHAMBER 8	RECORD INFORMATION
CU CONTROL BOX	CH9 CHAMBER 9	RECORD INFORMATION
CV CONTROL BOX	CH0 CHAMBER 0	RECORD INFORMATION
CW CONTROL BOX	CH1 CHAMBER 1	RECORD INFORMATION
CX CONTROL BOX	CH2 CHAMBER 2	RECORD INFORMATION
CY CONTROL BOX	CH3 CHAMBER 3	RECORD INFORMATION
CZ CONTROL BOX	CH4 CHAMBER 4	RECORD INFORMATION
CA CONTROL BOX	CH5 CHAMBER 5	RECORD INFORMATION
CB CONTROL BOX	CH6 CHAMBER 6	RECORD INFORMATION
CC CONTROL BOX	CH7 CHAMBER 7	RECORD INFORMATION
CD CONTROL BOX	CH8 CHAMBER 8	RECORD INFORMATION
CE CONTROL BOX	CH9 CHAMBER 9	RECORD INFORMATION
CF CONTROL BOX	CH0 CHAMBER 0	RECORD INFORMATION
CG CONTROL BOX	CH1 CHAMBER 1	RECORD INFORMATION
CH CONTROL BOX	CH2 CHAMBER 2	RECORD INFORMATION
CI CONTROL BOX	CH3 CHAMBER 3	RECORD INFORMATION
CJ CONTROL BOX	CH4 CHAMBER 4	RECORD INFORMATION
CK CONTROL BOX	CH5 CHAMBER 5	RECORD INFORMATION
CL CONTROL BOX	CH6 CHAMBER 6	RECORD INFORMATION
CM CONTROL BOX	CH7 CHAMBER 7	RECORD INFORMATION
CN CONTROL BOX	CH8 CHAMBER 8	RECORD INFORMATION
CO CONTROL BOX	CH9 CHAMBER 9	RECORD INFORMATION
CP CONTROL BOX	CH0 CHAMBER 0	RECORD INFORMATION
CQ CONTROL BOX	CH1 CHAMBER 1	RECORD INFORMATION
CR CONTROL BOX	CH2 CHAMBER 2	RECORD INFORMATION
CS CONTROL BOX	CH3 CHAMBER 3	RECORD INFORMATION
CT CONTROL BOX	CH4 CHAMBER 4	RECORD INFORMATION
CU CONTROL BOX	CH5 CHAMBER 5	RECORD INFORMATION
CV CONTROL BOX	CH6 CHAMBER 6	RECORD INFORMATION
CW CONTROL BOX	CH7 CHAMBER 7	RECORD INFORMATION
CX CONTROL BOX	CH8 CHAMBER 8	RECORD INFORMATION
CY CONTROL BOX	CH9 CHAMBER 9	RECORD INFORMATION
CZ CONTROL BOX	CH0 CHAMBER 0	RECORD INFORMATION
CA CONTROL BOX	CH1 CHAMBER 1	RECORD INFORMATION
CB CONTROL BOX	CH2 CHAMBER 2	RECORD INFORMATION
CC CONTROL BOX	CH3 CHAMBER 3	RECORD INFORMATION
CD CONTROL BOX	CH4 CHAMBER 4	RECORD INFORMATION
CE CONTROL BOX	CH5 CHAMBER 5	RECORD INFORMATION
CF CONTROL BOX	CH6 CHAMBER 6	RECORD INFORMATION
CG CONTROL BOX	CH7 CHAMBER 7	RECORD INFORMATION
CH CONTROL BOX	CH8 CHAMBER 8	RECORD INFORMATION
CI CONTROL BOX	CH9 CHAMBER 9	RECORD INFORMATION
CJ CONTROL BOX	CH0 CHAMBER 0	RECORD INFORMATION
CK CONTROL BOX	CH1 CHAMBER 1	RECORD INFORMATION
CL CONTROL BOX	CH2 CHAMBER 2	RECORD INFORMATION
CM CONTROL BOX	CH3 CHAMBER 3	RECORD INFORMATION
CN CONTROL BOX	CH4 CHAMBER 4	RECORD INFORMATION
CO CONTROL BOX	CH5 CHAMBER 5	RECORD INFORMATION
CP CONTROL BOX	CH6 CHAMBER 6	RECORD INFORMATION
CQ CONTROL BOX	CH7 CHAMBER 7	RECORD INFORMATION
CR CONTROL BOX	CH8 CHAMBER 8	RECORD INFORMATION
CS CONTROL BOX	CH9 CHAMBER 9	RECORD INFORMATION
CT CONTROL BOX	CH0 CHAMBER 0	RECORD INFORMATION
CU CONTROL BOX	CH1 CHAMBER 1	RECORD INFORMATION
CV CONTROL BOX	CH2 CHAMBER 2	RECORD INFORMATION
CW CONTROL BOX	CH3 CHAMBER 3	RECORD INFORMATION
CX CONTROL BOX	CH4 CHAMBER 4	RECORD INFORMATION
CY CONTROL BOX	CH5 CHAMBER 5	RECORD INFORMATION
CZ CONTROL BOX	CH6 CHAMBER 6	RECORD INFORMATION
CA CONTROL BOX	CH7 CHAMBER 7	RECORD INFORMATION
CB CONTROL BOX	CH8 CHAMBER 8	RECORD INFORMATION
CC CONTROL BOX	CH9 CHAMBER 9	RECORD INFORMATION
CD CONTROL BOX	CH0 CHAMBER 0	RECORD INFORMATION
CE CONTROL BOX	CH1 CHAMBER 1	RECORD INFORMATION
CF CONTROL BOX	CH2 CHAMBER 2	RECORD INFORMATION
CG CONTROL BOX	CH3 CHAMBER 3	RECORD INFORMATION
CH CONTROL BOX	CH4 CHAMBER 4	RECORD INFORMATION
CI CONTROL BOX	CH5 CHAMBER 5	RECORD INFORMATION
CJ CONTROL BOX	CH6 CHAMBER 6	RECORD INFORMATION
CK CONTROL BOX	CH7 CHAMBER 7	RECORD INFORMATION
CL CONTROL BOX	CH8 CHAMBER 8	RECORD INFORMATION
CM CONTROL BOX	CH9 CHAMBER 9	RECORD INFORMATION
CN CONTROL BOX	CH0 CHAMBER 0	RECORD INFORMATION
CO CONTROL BOX	CH1 CHAMBER 1	RECORD INFORMATION
CP CONTROL BOX	CH2 CHAMBER 2	RECORD INFORMATION
CQ CONTROL BOX	CH3 CHAMBER 3	RECORD INFORMATION
CR CONTROL BOX	CH4 CHAMBER 4	RECORD INFORMATION
CS CONTROL BOX	CH5 CHAMBER 5	RECORD INFORMATION
CT CONTROL BOX	CH6 CHAMBER 6	RECORD INFORMATION
CU CONTROL BOX	CH7 CHAMBER 7	RECORD INFORMATION
CV CONTROL BOX	CH8 CHAMBER 8	RECORD INFORMATION
CW CONTROL BOX	CH9 CHAMBER 9	RECORD INFORMATION
CX CONTROL BOX	CH0 CHAMBER 0	RECORD INFORMATION
CY CONTROL BOX	CH1 CHAMBER 1	RECORD INFORMATION
CZ CONTROL BOX	CH2 CHAMBER 2	RECORD INFORMATION
CA CONTROL BOX	CH3 CHAMBER 3	RECORD INFORMATION
CB CONTROL BOX	CH4 CHAMBER 4	RECORD INFORMATION
CC CONTROL BOX	CH5 CHAMBER 5	RECORD INFORMATION
CD CONTROL BOX	CH6 CHAMBER 6	RECORD INFORMATION
CE CONTROL BOX	CH7 CHAMBER 7	RECORD INFORMATION
CF CONTROL BOX	CH8 CHAMBER 8	RECORD INFORMATION
CG CONTROL BOX	CH9 CHAMBER 9	RECORD INFORMATION
CH CONTROL BOX	CH0 CHAMBER 0	RECORD INFORMATION
CI CONTROL BOX	CH1 CHAMBER 1	RECORD INFORMATION
CJ CONTROL BOX	CH2 CHAMBER 2	RECORD INFORMATION
CK CONTROL BOX	CH3 CHAMBER 3	RECORD INFORMATION
CL CONTROL BOX	CH4 CHAMBER 4	RECORD INFORMATION
CM CONTROL BOX	CH5 CHAMBER 5	RECORD INFORMATION
CN CONTROL BOX	CH6 CHAMBER 6	RECORD INFORMATION
CO CONTROL BOX	CH7 CHAMBER 7	RECORD INFORMATION
CP CONTROL BOX	CH8 CHAMBER 8	RECORD INFORMATION
CQ CONTROL BOX	CH9 CHAMBER 9	RECORD INFORMATION
CR CONTROL BOX	CH0 CHAMBER 0	RECORD INFORMATION
CS CONTROL BOX	CH1 CHAMBER 1	RECORD INFORMATION
CT CONTROL BOX	CH2 CHAMBER 2	RECORD INFORMATION
CU CONTROL BOX	CH3 CHAMBER 3	RECORD INFORMATION
CV CONTROL BOX	CH4 CHAMBER 4	RECORD INFORMATION
CW CONTROL BOX	CH5 CHAMBER 5	RECORD INFORMATION
CX CONTROL BOX	CH6 CHAMBER 6	RECORD INFORMATION
CY CONTROL BOX	CH7 CHAMBER 7	RECORD INFORMATION
CZ CONTROL BOX	CH8 CHAMBER 8	RECORD INFORMATION
CA CONTROL BOX	CH9 CHAMBER 9	RECORD INFORMATION
CB CONTROL BOX	CH0 CHAMBER 0	RECORD INFORMATION
CC CONTROL BOX	CH1 CHAMBER 1	RECORD INFORMATION
CD CONTROL BOX	CH2 CHAMBER 2	RECORD INFORMATION
CE CONTROL BOX	CH3 CHAMBER 3	RECORD INFORMATION
CF CONTROL BOX	CH4 CHAMBER 4	RECORD INFORMATION
CG CONTROL BOX	CH5 CHAMBER 5	RECORD INFORMATION
CH CONTROL BOX	CH6 CHAMBER 6	RECORD INFORMATION
CI CONTROL BOX	CH7 CHAMBER 7	RECORD INFORMATION
CJ CONTROL BOX	CH8 CHAMBER 8	RECORD INFORMATION
CK CONTROL BOX	CH9 CHAMBER 9	RECORD INFORMATION
CL CONTROL BOX	CH0 CHAMBER 0	RECORD INFORMATION
CM CONTROL BOX	CH1 CHAMBER 1	RECORD INFORMATION
CN CONTROL BOX	CH2 CHAMBER 2	RECORD INFORMATION
CO CONTROL BOX	CH3 CHAMBER 3	RECORD INFORMATION
CP CONTROL BOX	CH4 CHAMBER 4	RECORD INFORMATION
CQ CONTROL BOX	CH5 CHAMBER 5	RECORD INFORMATION
CR CONTROL BOX	CH6 CHAMBER 6	RECORD INFORMATION
CS CONTROL BOX	CH7 CHAMBER 7	RECORD INFORMATION
CT CONTROL BOX	CH8 CHAMBER 8	RECORD INFORMATION
CU CONTROL BOX	CH9 CHAMBER 9	RECORD INFORMATION
CV CONTROL BOX	CH0 CHAMBER 0	RECORD INFORMATION
CW CONTROL BOX	CH1 CHAMBER 1	