

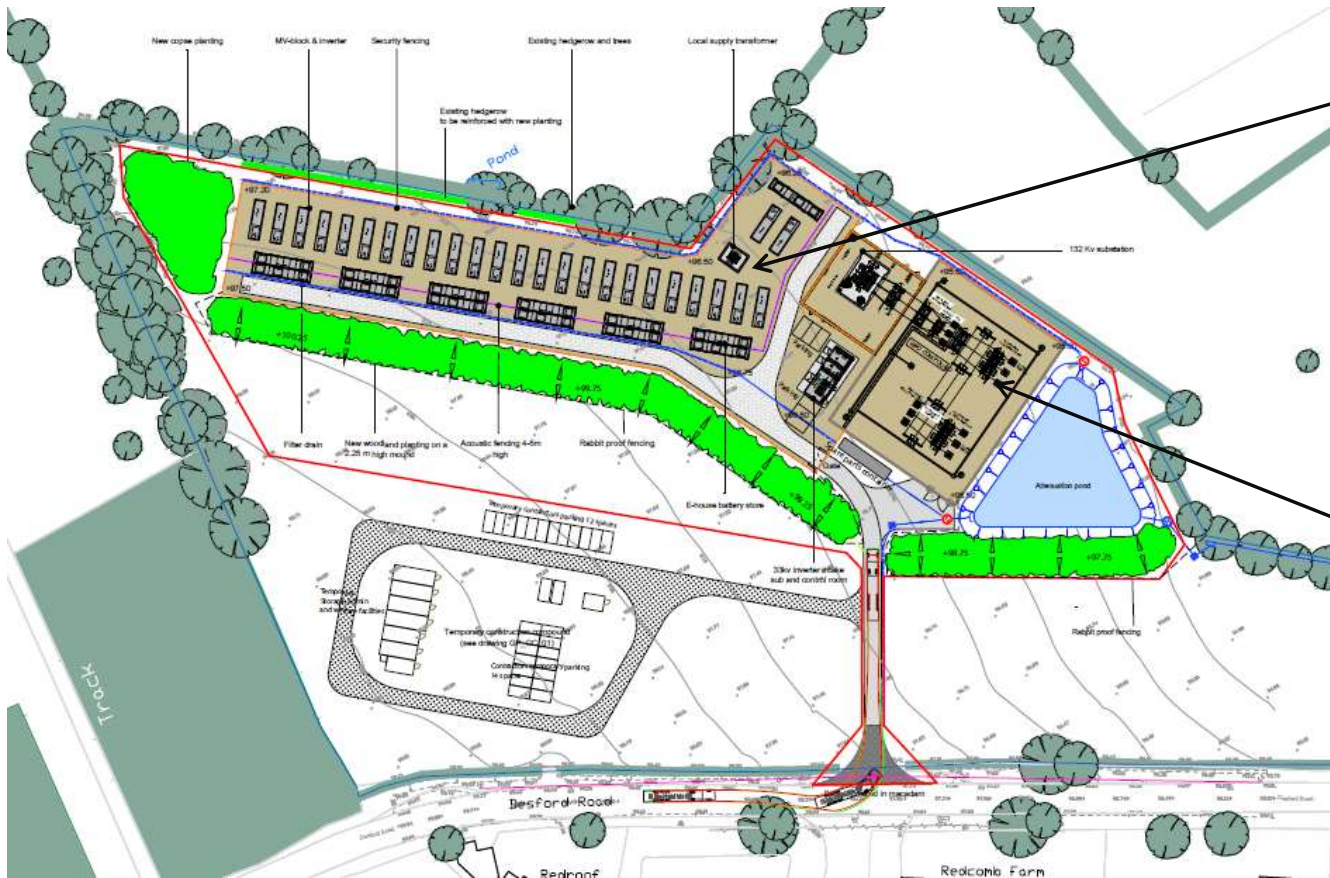


STATERA ENERGY

49.99 MW BATTERY STORAGE FACILITY
ADJACENT TO THE ENDERBY SUBSTATION, BLABY

OFFICIAL COLOUR SCHEDULE

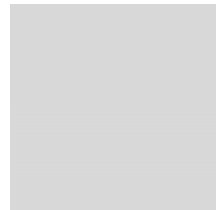
February 2021

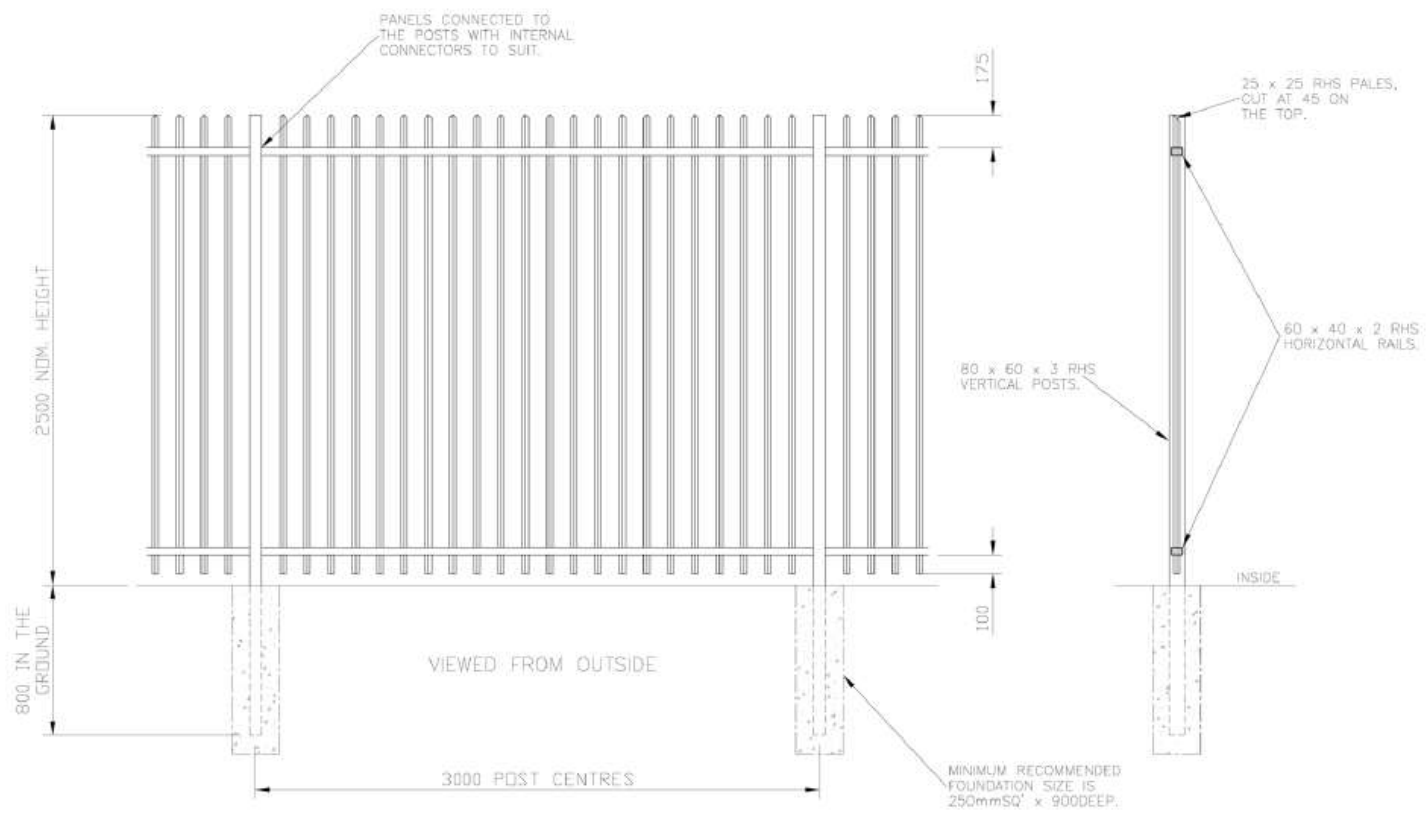


The E Houses, MV Blocks, Switchgear Building, Control Room and Spare Parts Container will be finished in British Racing Green, Ral 6005.

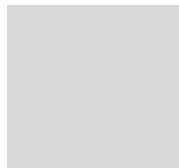


The colours of the outer electrical equipment; Local Transformer and 132kV Substation will resemble the adjacent Enderby substation.

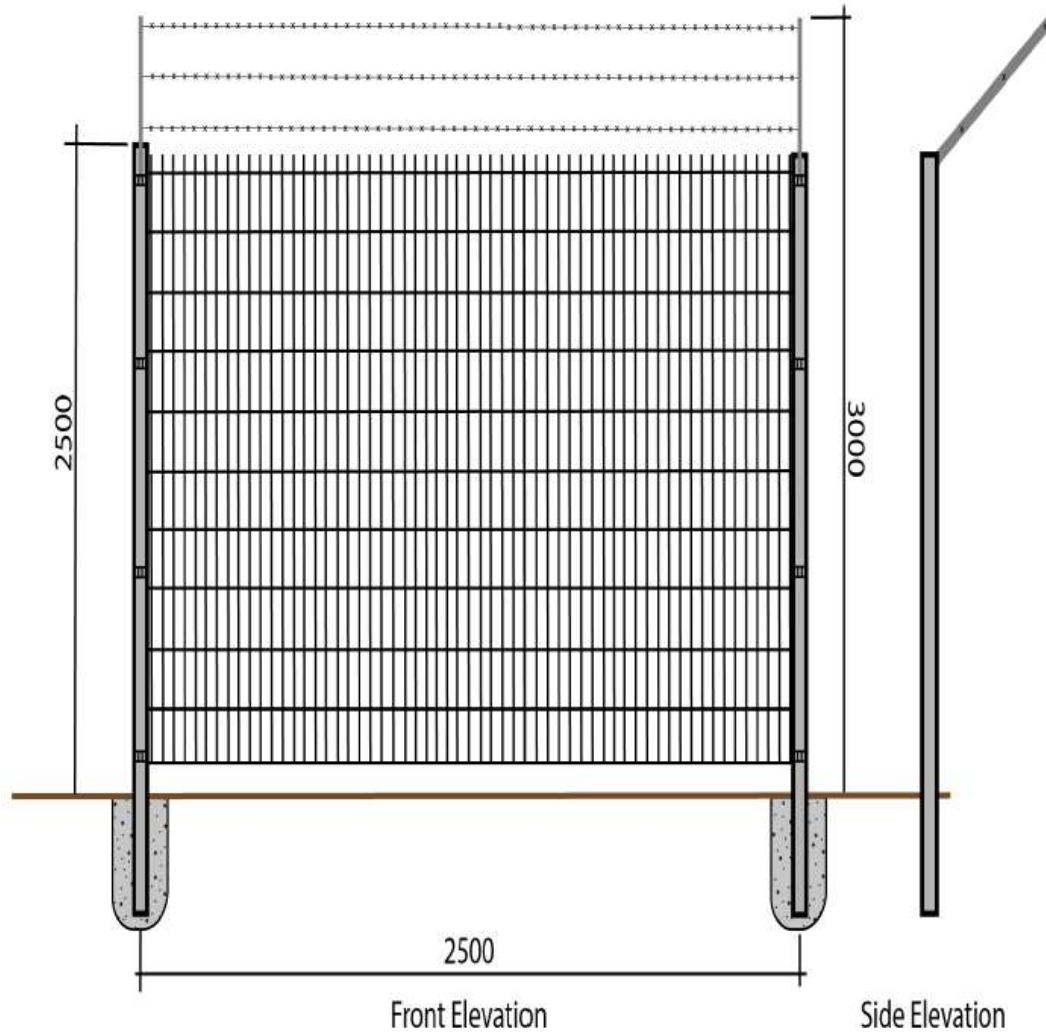




A palisade security fence will protect the electrical equipment. The grey colour of the fence will be in keeping with the external electrical equipment



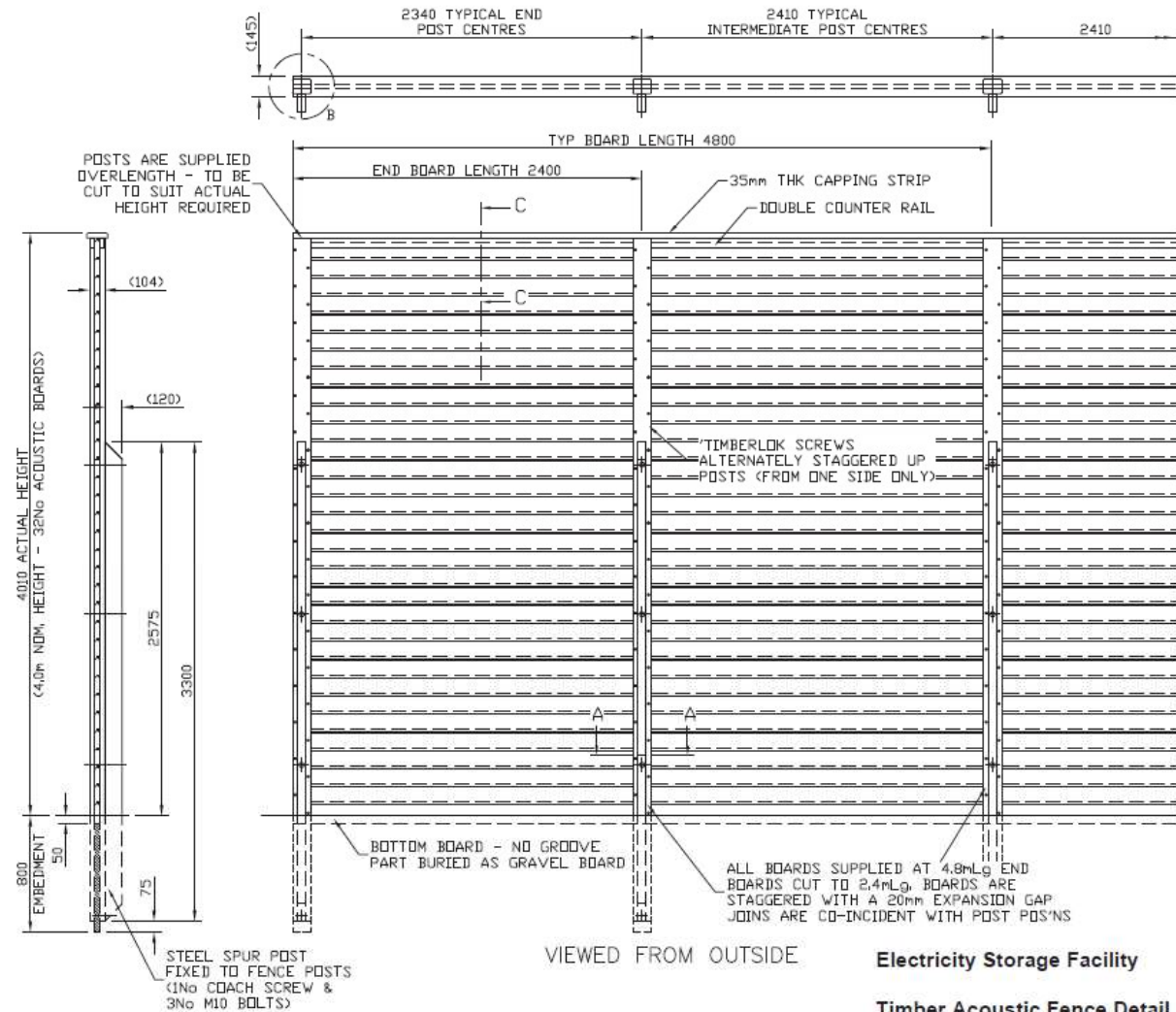
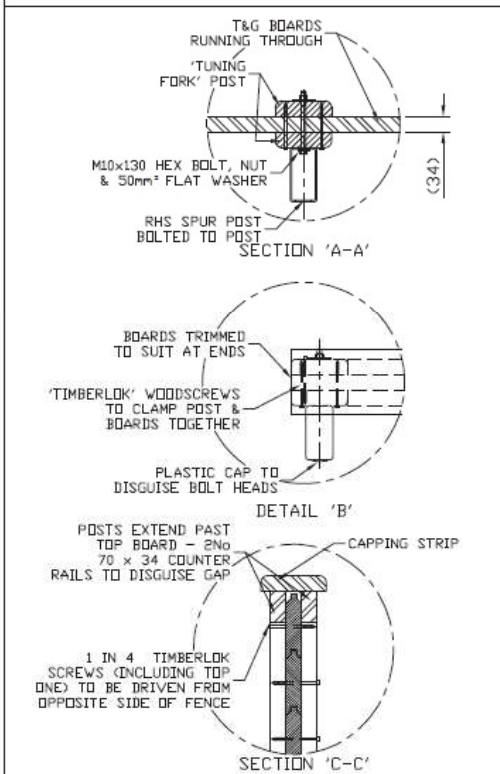
PROJECT		
Electricity Storage Facility		
TITLE		
Palisade security fence detail		
SCALE	DATE	U/WG NO.
1:25 at A3	04.04.17	GP_SF_01



The site compound security fence will be a proprietary weld mesh fence, on steel posts finished in a mid dark green colour with cranked top supporting three strands of barbed wire.



The acoustic fencing for the site will be made of timber and will have a natural wood finish. All fixings are galvanised of stainless steel.



1:30 at A3

Electricity Storage Facility

Timber Acoustic Fence Detail

20.08.17

Drawing No: GP_AF_01