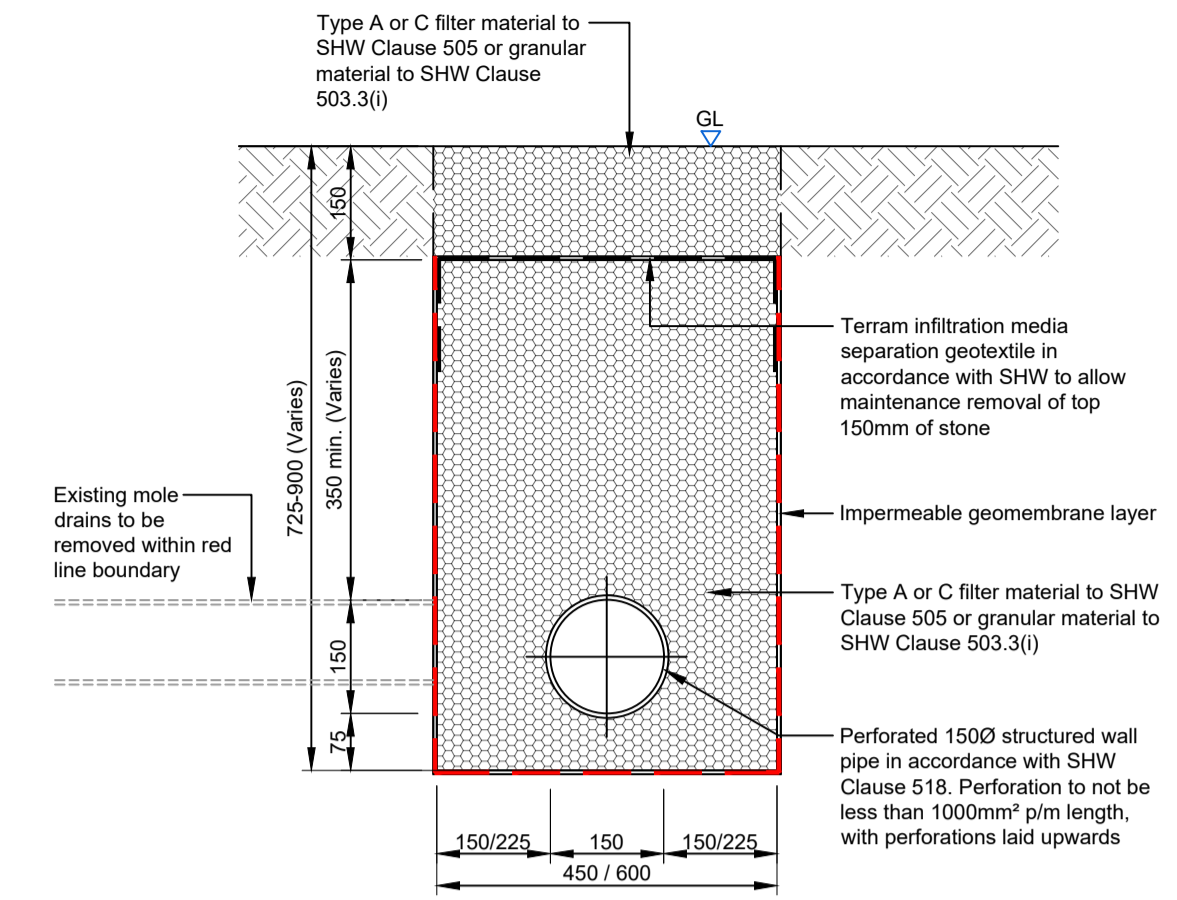


Notes

1. This drawing has been prepared in accordance with the scope of RPS's appointment with its client and is subject to the terms and conditions of that appointment. RPS accepts no liability for any use of this document other than by its client and only for the purposes for which it was prepared and provided.
2. If received electronically it is the recipient's responsibility to print to correct scale. Only written dimensions should be used.
3. This drawing should be read in conjunction with all other relevant drawings and specifications.

Key:

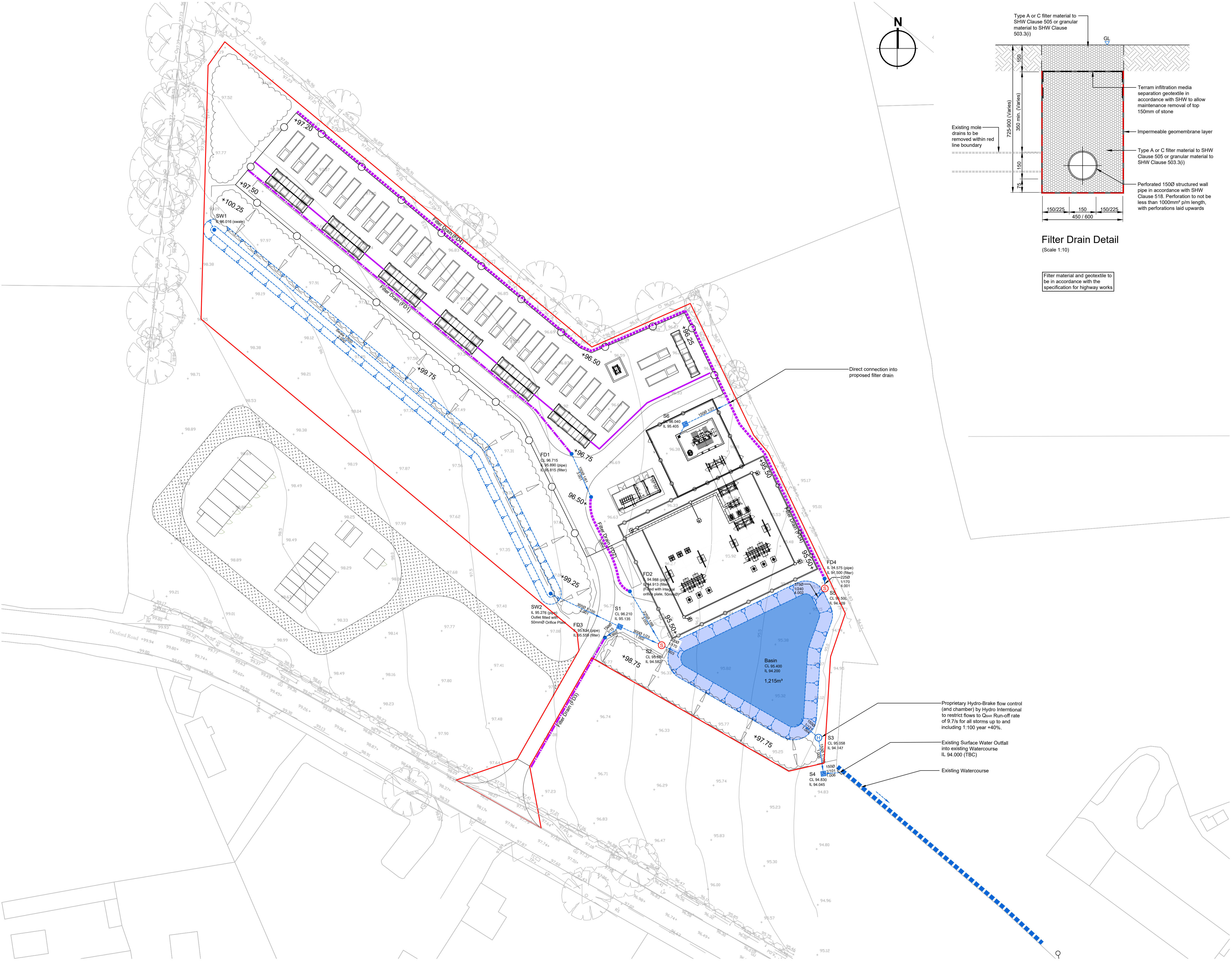
- Planning boundary
- 9.001 SW Sewer (ID & Gradient)
- S2 SW Manhole
- HydroBrake® flow control unit
- 9.001 MicroDrainage model pipe number
- MicroDrainage model node
- Proposed Vortex Grit Separator unit
- Filter drain - Type A (450mm wide)
- Filter drain - Type B (600mm wide)



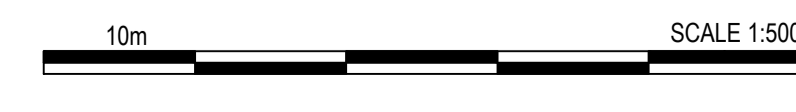
Filter Drain Detail
(Scale 1:10)

Filter material and geotextile to be in accordance with the specification for highway works

The contractor is to survey all drainage connection points to satisfy himself all inverts used in the design are accurate. Any discrepancies are to be reported to the engineer immediately where further advice will be given.



Indicative Drainage Layout
Scale 1:500



P01	First Issue.	CW	DW	02.02.21
Rev	Description	By	Ckd	Date



Sherwood House, Sherwood Avenue,
Newark, Nottinghamshire, NG24 1QQ
T:01636 605 700 E: rpsnewark@rpsgroup.com



Project **Statera Energy Drainage Schemes 2021**

Title **Desford Road - Proposed Drainage Layout**

RPS Project Number	Scale @ A1	Date Created
NK020496	1:500	02.02.2021
Task Team Manager	Information Author	Task Information Manager
GB	CW	DW

Status	S2 (Suitable for Information)
Document Number	020496-RPS-DES-XX-DR-D-0300
Revision	P01
Project Code - Originator - Zone - Level - Type - Role - Drawing Number	
rpsgroup.com	