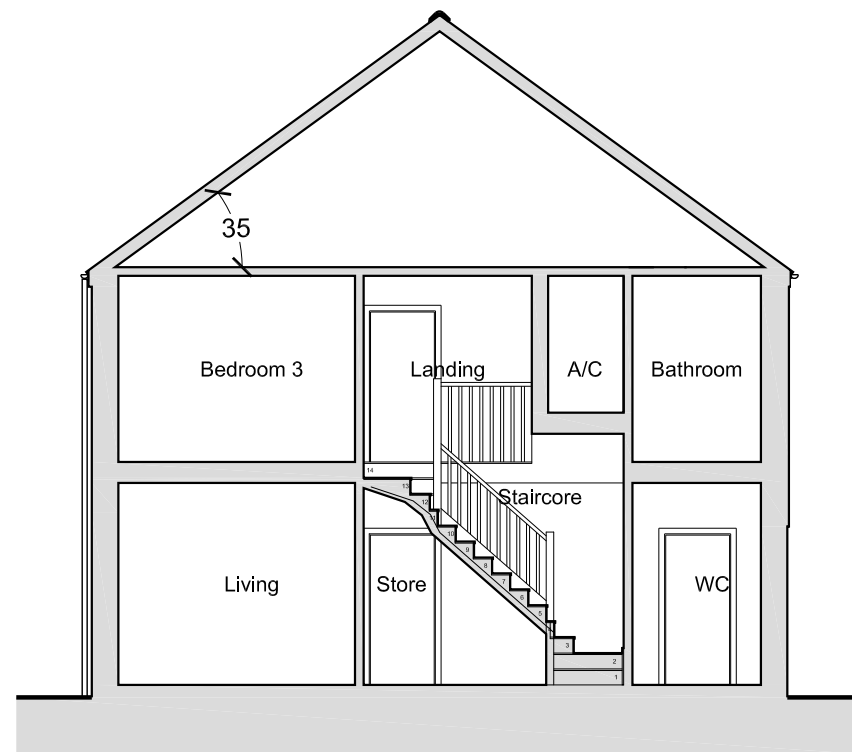
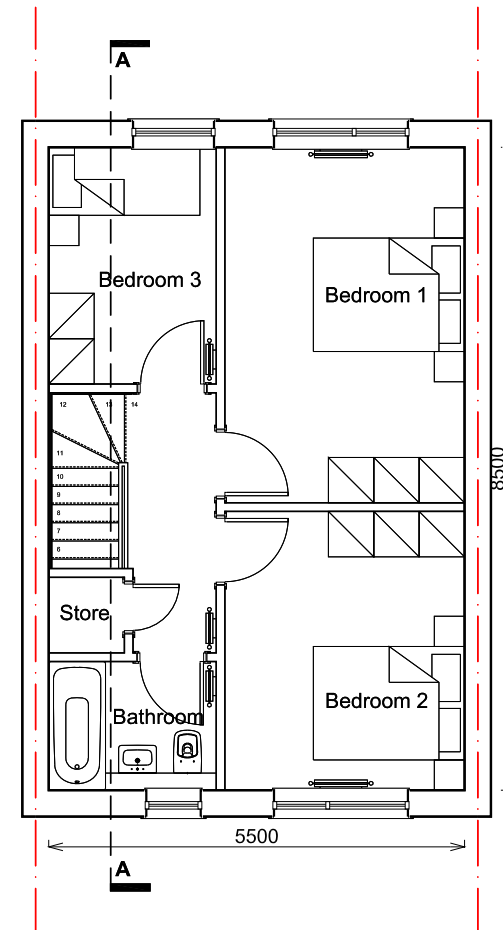
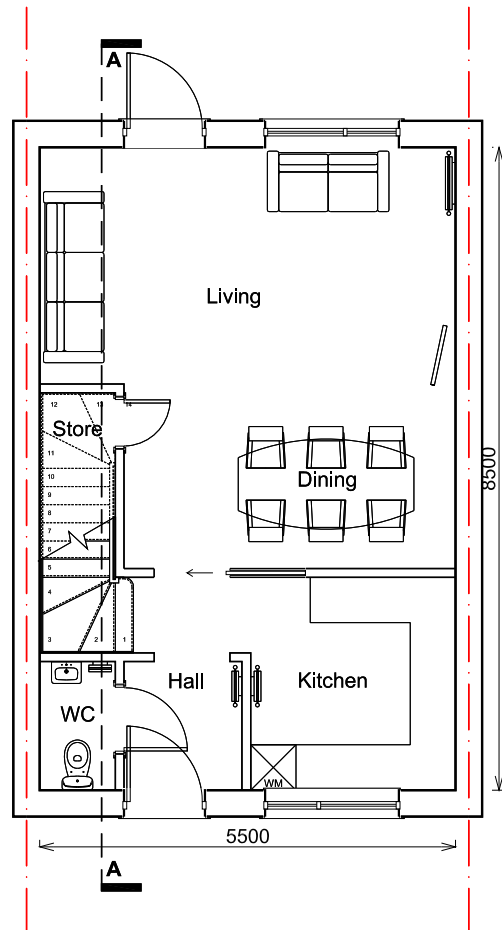


HOUSE TYPE: GIA:

PLOT Nos.	HOUSE TYPE: GIA:				
	STANDARD	HANDED	Terraced	Semi-Detached	Detached
C8		●		●	
C9		●		●	
C12		●		●	
C13		●		●	
C16		●		●	
C17		●			●
C18		●		●	
C19		●		●	
C20		●		●	
C21		●		●	
C32		●		●	
C35		●		●	



# 3B END TERRACE

## 1006ft<sup>2</sup> / 93.5m<sup>2</sup>



SCALE 1:100

REVISION	DATE	COMMENTS	AUTHOR / CHECKED
P2	12/02/21	PLANNING ISSUE	JW/GP
P1	11/02/21	Draft for comment	JW/GP



LHC GROUP  
www.lhc.net

TITLE  
WEST CARLAZE  
GARDEN VILLAGE

DETAIL  
H-S2C+ 3 BED (Council)  
FLOOR PLANS & TYPICAL SECTION A-A

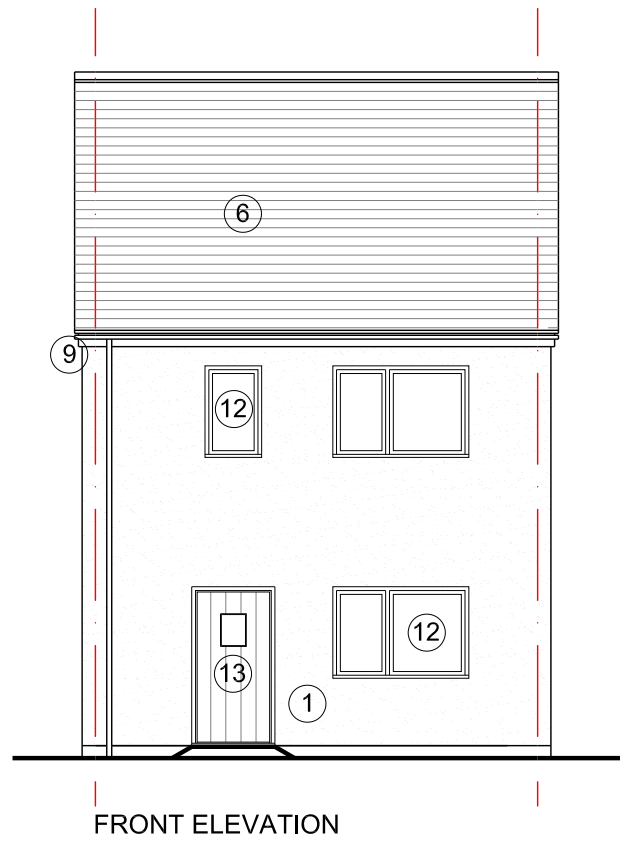
DATE	SCALE	
10/02/2021	1:100 @A3	
DRAWING No.	REV	AUTHOR / CHECKED
17120 H-S2C 02.10	P2	JW / GLP

EXETER 01392 444334  
PLYMOUTH 01752 669368

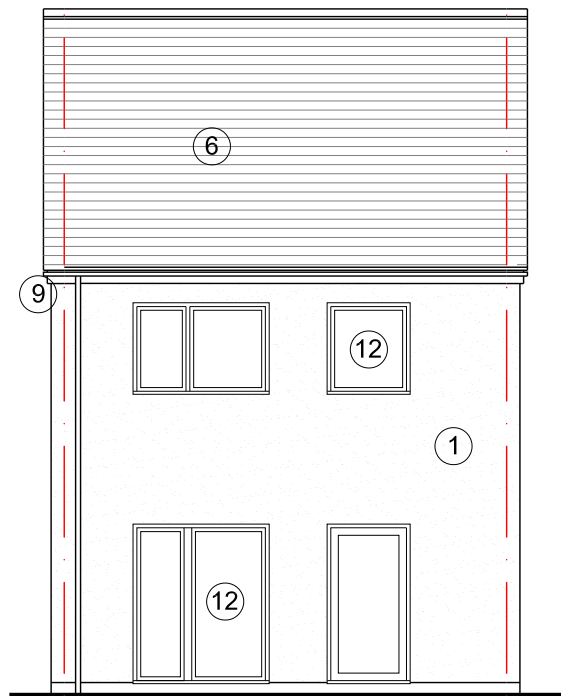
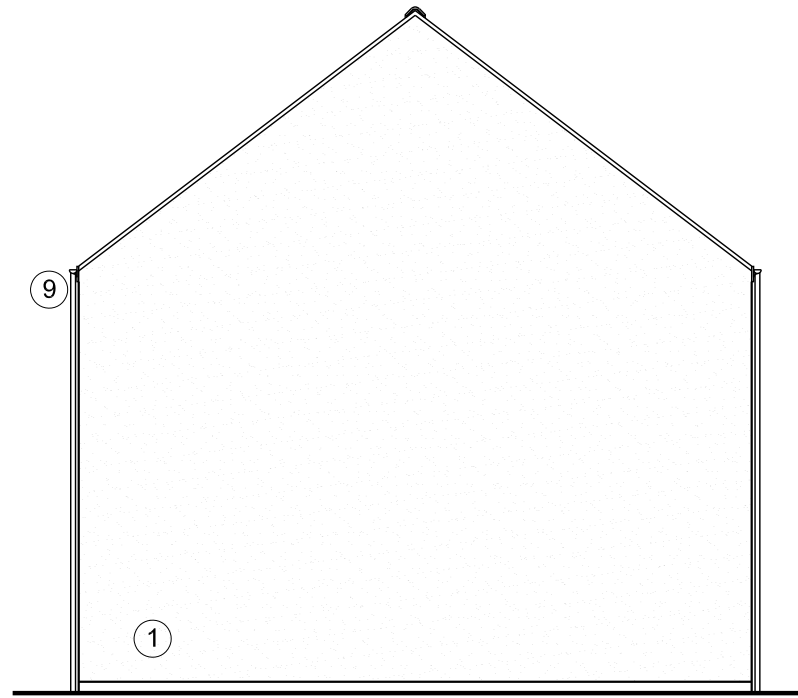
DRAWING - STATUS PLANNING

CONTRACTORS MUST CHECK ALL DIMENSIONS ON SITE. ONLY FIGURED DIMENSIONS ARE TO BE WORKED FROM. DISCREPANCIES MUST BE REPORTED TO THE ARCHITECT BEFORE PROCEEDING. © THIS DRAWING IS COPYRIGHT.

HOUSE TYPE:		GIA:				
PLOT Nos.	STANDARD	HANDED	Terraced	Semi-Detached	Detached	
C8		●		●		
C9		●		●		
C12		●		●		
C13		●		●		
C16		●		●		
C17		●			●	
C18		●		●		
C19		●		●		
C20		●		●		
C21		●		●		
C32		●		●		
C35		●		●		



FRONT ELEVATION



REAR ELEVATION

**MATERIALS KEY:**

- ① Painted render
- ② Natural local stone
- ③ Timber cladding
- ④ Blue engineering bricks
- ⑤ Metal standing seam dormer / panel
- ⑥ Cement tile roof
- ⑦ Metal standing seam roof
- ⑧ Metal balustrading / juliet balcony
- ⑨ UPVC guttering
- ⑩ Aluminium composite windows and doors
- ⑪ Aluminium composite front door
- ⑫ UPVC windows and doors
- ⑬ UPVC composite front door
- ⑭ Bee Brick

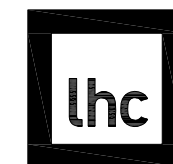
# 3B END TERRACE

## 1006ft<sup>2</sup> / 93.5m<sup>2</sup>



SCALE 1:100

P2	12/02/21	PLANNING ISSUE	JW/GP
P1	11/02/21	Draft for comment	JW/GP
REVISION	DATE	COMMENTS	AUTHOR / CHECKED



architecture  
urbanism  
landscape

TITLE  
WEST CARLAZE  
GARDEN VILLAGE

DETAIL  
H-S2C+ 3 BED (Council)  
ELEVATIONS

DATE  
10/02/2021

SCALE  
1:100 @A3

DRAWING No.  
17120 H-S2C 04.10

REV  
P2

AUTHOR / CHECKED  
JW / GLP

EXETER 01392 444334  
PLYMOUTH 01752 669368

DRAWING - STATUS PLANNING