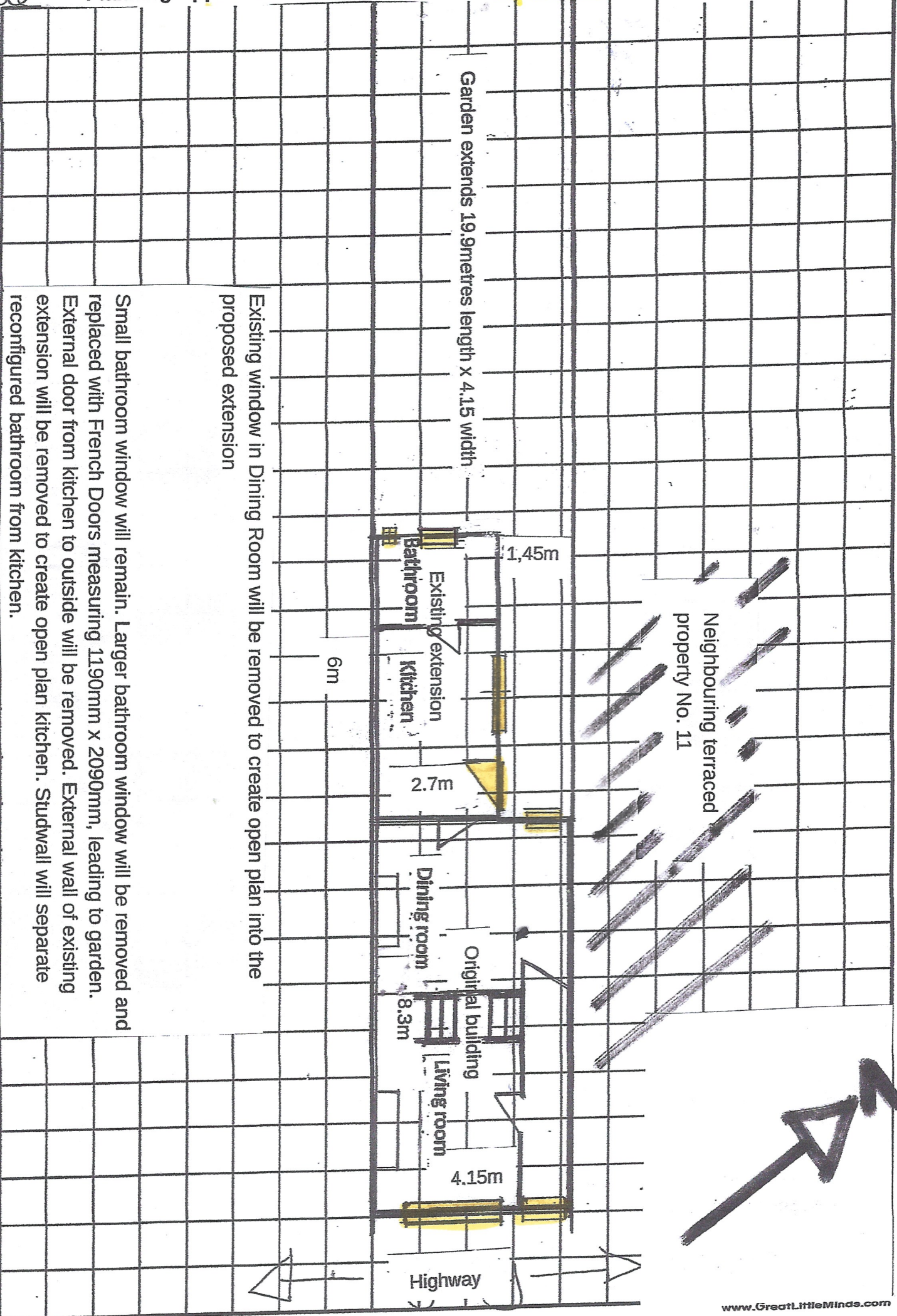
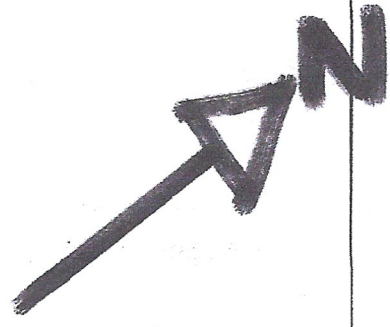


Scale

Garden extends 19.9metres length x 4.15 width



Neighbouring terraced property No. 11



Existing window in Dining Room will be removed to create open plan into the proposed extension

Small bathroom window will remain. Larger bathroom window will be removed and replaced with French Doors measuring 1190mm x 2090mm, leading to garden. External door from kitchen to outside will be removed. External wall of existing extension will be removed to create open plan kitchen. Studwall will separate reconfigured bathroom from kitchen.