

201002

PROPOSED RECONSTRUCTION OF GRADE II LISTED BUILDING AT  
1-3 SUDBOROUGH ROAD, SLIPTON, KETTERING, NORTHANTS NN14 3AQ  
FOLLOWING CATASTROPHIC FIRE

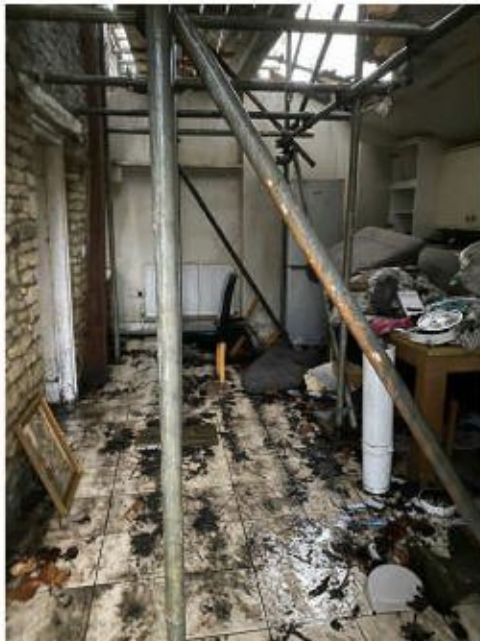
APPENDIX A1: EXTERNAL PHOTOS



1. Frontage looking North out of village



2. Rear view looking North



3. Internal view of kitchen extension 1



4. Rear view towards outbuildings courtyard



5. Rear view of wall demolished for access



6. Courtyard view of outbuildings & kitchen 1

  
alisonlamont@aol.com

11 Gorse Close Rugby CV22 6SH

ALISON LAMONT DESIGN LIMITED  
COMPANY NO. 8220230  
REGISTERED IN ENGLAND & WALES



## APPENDIX A2: INTERNAL PHOTOS



7. First floor internal view looking South from stair 1



8. First floor internal view looking East from stair 1



9. Ground floor internal view towards bread oven fire



10. Ground floor internal view of sitting room



11. Ground floor internal view of lounge 1



12. Ground floor internal view of stair 2



alisonlamont@aol.com  
11 Gorse Close Rugby CV22 6SH

ALISON LAMONT DESIGN LIMITED  
COMPANY NO. 8220230  
REGISTERED IN ENGLAND & WALES