

201002

PROPOSED RECONSTRUCTION OF GRADE II LISTED BUILDING AT
1-3 SUDBOROUGH ROAD, SLIPTON, KETTERING, NORTHANTS NN14 3AQ
FOLLOWING CATASTROPHIC FIRE

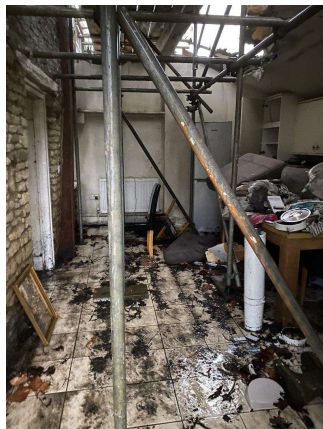
APPENDIX A1: EXTERNAL PHOTOS



1. Frontage looking North out of village



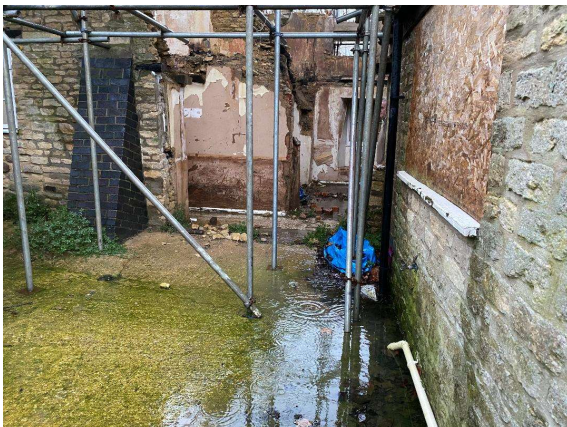
2. Rear view looking North



3. Internal view of kitchen extension 1



4. Rear view towards outbuildings courtyard



5. Rear view of wall demolished for access



6. Courtyard view of outbuildings & kitchen 1

07739 570265

alisonlamont@aol.com

11 Gorse Close Rugby CV22 6SH

ALISON LAMONT DESIGN LIMITED
COMPANY NO. 8220230
REGISTERED IN ENGLAND & WALES

APPENDIX A2: INTERNAL PHOTOS



7. First floor internal view looking South from stair 1



8. First floor internal view looking East from stair 1



9. Ground floor internal view towards bread oven fire



10. Ground floor internal view of sitting room



11. Ground floor internal view of lounge 1



12. Ground floor internal view of stair 2

07739 570265

alisonlamont@aol.com

11 Gorse Close Rugby CV22 6SH

ALISON LAMONT DESIGN LIMITED
COMPANY NO. 8220230
REGISTERED IN ENGLAND & WALES