

NOTES

Do not scale this drawing.

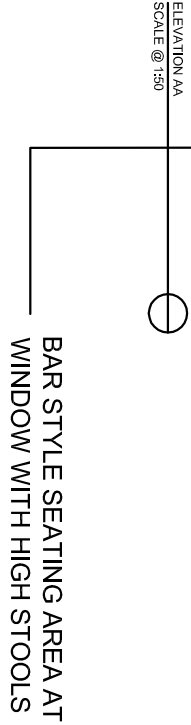
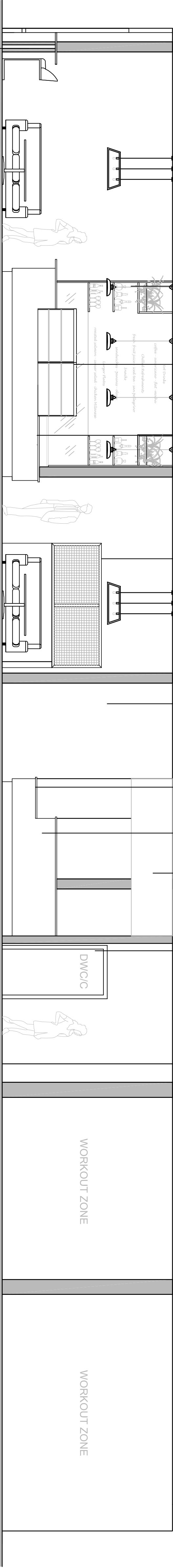
It is the Contractor's responsibility to report any inconsistencies on this drawing, or between drawings, to the Architects and to request clarification and instruction before proceeding.

All dimensions to be checked on site prior to commencement of construction and prior to ordering of materials and components.

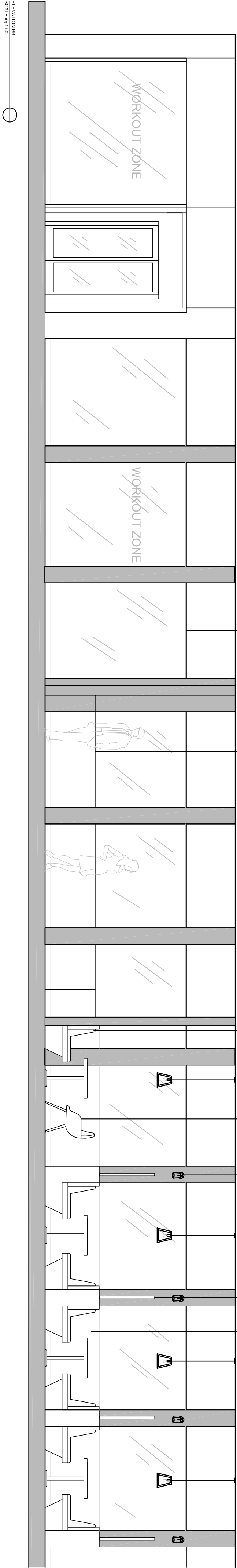
Following electronic transfer of drawing information, it is the responsibility of the recipient to ensure that the information is transferred correctly and that it is not lost, damaged, altered or disclosed to any third parties without our permission. It remains our property and must be returned on request.

All rights described in Chapter IV of The Copyright, Design and Patents Act 1988 have been generally asserted.

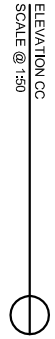
REVISION DESCRIPTION DATE DRAWN CHECKED



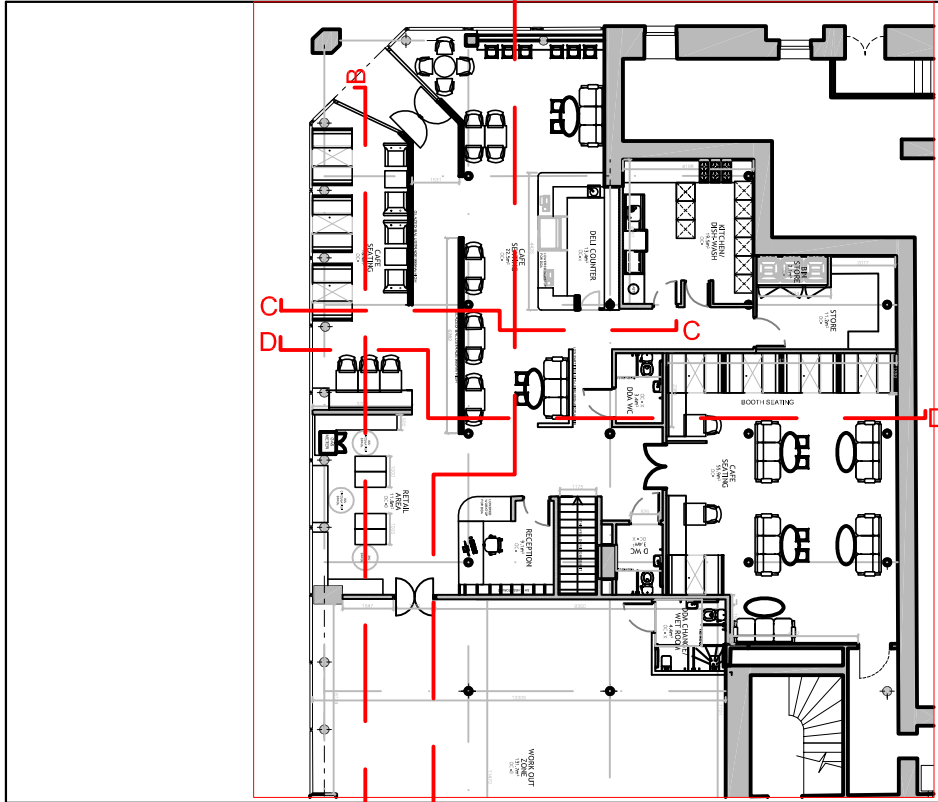
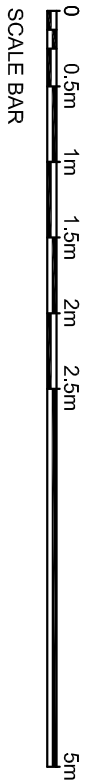
OPAQUE WINDOW GRAPHIC AT LOW LEVEL FOR PRIVACY AT BOOTHS
BESPOKE FRAME WITH WIRE MESH AND ARTIFICIAL PLANNING
WALL LIGHT, SPECIFICATION TBC
UPHOLSTERED LARGE DINING CHAIR
FIXED SEATING MATERIAL/FINISH TBC
EXISTING GLAZED SHOP FRONT WORKOUT ZONE DESIGNED BY OTHERS
RETAIL AREA, CLIENT TO CONFIRM DISPLAY SPECIFICATIONS



EXISTING GLAZED SHOP FRONT
EXISTING DOOR/FRANCE WITH SHUTTER
BESPOKE FRAME WITH WIRE MESH AND ARTIFICIAL PLANNING
UPHOLSTERED LARGE DINING CHAIR
FIXED SEATING MATERIAL/FINISH TBC
GRID CEILING REMOVED AND EXISTING CORNICING ETC RETAINED
FEATURE LIGHTING ABOVE SERVICE COUNTER, SPEC TBC
CHILLED FOOD DISPLAY, MODEL TBC
DOORWAY IN AND OUT TO KITCHEN
BAR FRONT MATERIALS AND SPECIFICATIONS TBC



EXISTING GLAZED SHOP FRONT
EXISTING DOOR/FRANCE WITH SHUTTER
BESPOKE FRAME WITH WIRE MESH AND ARTIFICIAL PLANNING
UPHOLSTERED LARGE DINING CHAIR
FIXED SEATING MATERIAL/FINISH TBC
WALL LIGHT, SPECIFICATION TBC
BESPOKE FRAME WITH WIRE MESH AND PLANNING
BOOTH SEATING MATERIALS AND FINISH TBC
GRID CEILING REMOVED AND EXISTING CORNICING ETC RETAINED



40B Spens Wharf
Glasgow
G4 9TH
t: 0141 649 2296
&
Cubic CoWork
Unit 5 Lisburn Square
B728 1TS
t: 02892 528 076
e-mail: info@410architects.com

A10 Architects Ltd is registered in Scotland as a limited liability Company with the
registration number SC237504. Registered office: 40B Spens Wharf, Glasgow, G4 9TH

PROJECT
10 BUCKINGHAM STREET
GLASGOW
G1 1NX

TITLE
PROPOSED
ELEVATIONS
GROUND FLOOR

JOB NUMBER	DRAWING NUMBER		REV	
1542	AL(4)001			
SCALE	SHEET SIZE	DATE	DRAWN BY	CHECKED BY
1:50	A1/A3	26/11/2020	RS	DG
WORK STAGE	PURPOSE			
2	PLANNING			