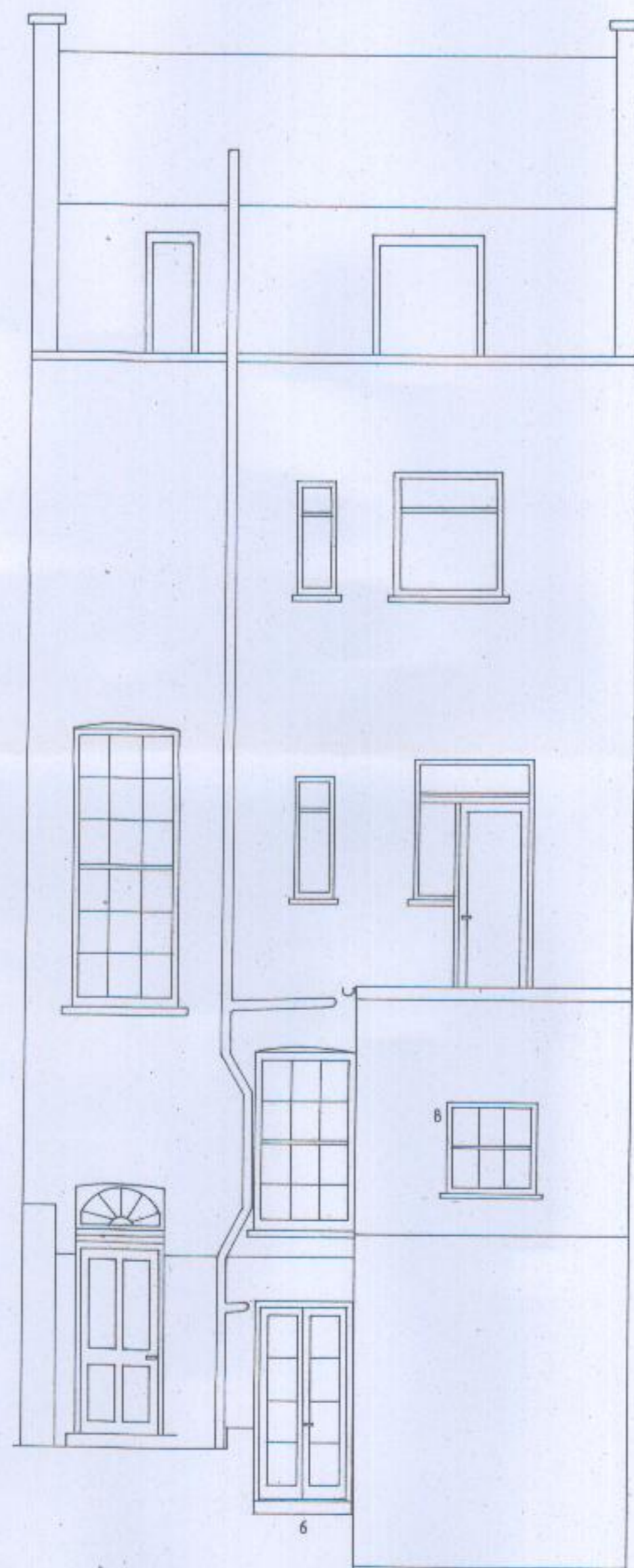


LEGEND.

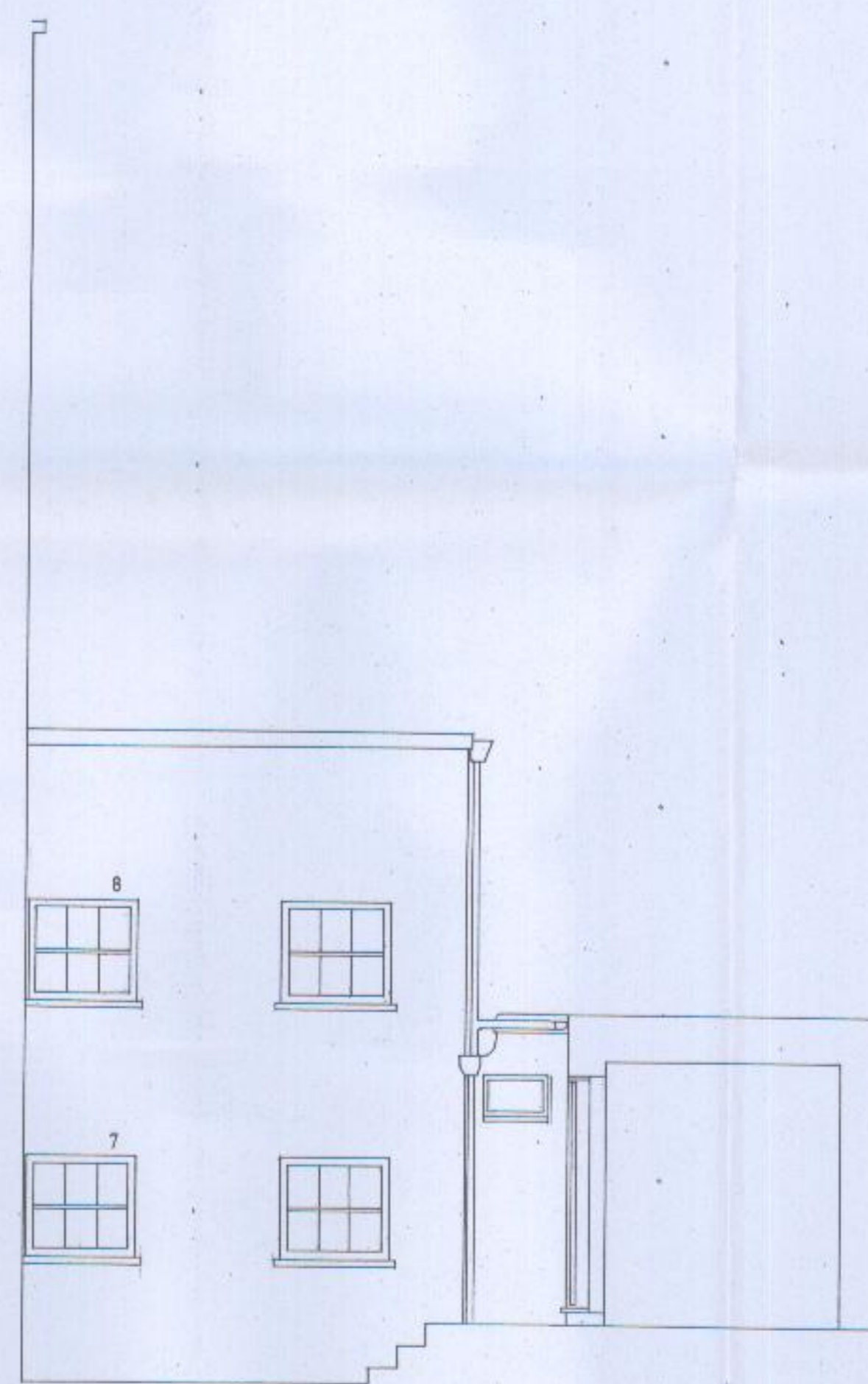
1. Galvanised-steel staircase down to Basement level, black-painted finish
2. Double sliding-sash timber-windows, single-glazed, including new stone-sill.
3. Lead-clad roofing above proposed porch, to proposed new entrance to Basement flat.
4. Space enclosed as proposed porch area.
5. Proposed new front-door to Basement flat, with fixed glazed-panel adjacent. Timber-pannelled door in painted finish, with 4 no. single-glazed panes.
6. Pair of timber French-doors in Basement flat, leading from Bedroom to Patio area; painted-finish and single-glazed.
7. 2 no. sliding-sash timber-windows to rear of Basement flat, painted-finish and single-glazed.
8. Sliding-sash timber-windows to rear of Ground Floor flat, painted-finish and single-glazed.
9. Proposed door (l. & g. framed-door) and frame to re-opened doorway to under-pavement storage / vault area.



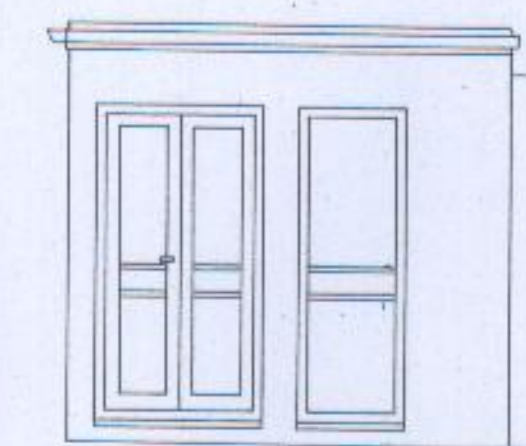
1



REAR

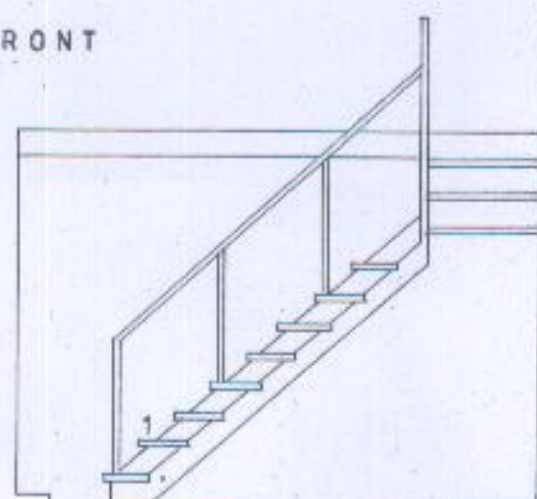


REAR ADDITION



STUDIO

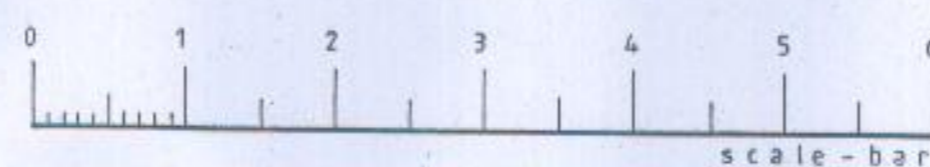
FRONT



New Steel Staircase down to Basement Flat.



Front Basement Flat: Proposed Front-door.



scale - bar

DRAWING no: 25MS / 04 REVISED 24-02-16.

25 HOLYNEUX ST. LONDON W1H 5HW
 Elevations as Proposed Scale: 1:50 at A1
 Drg. no: 25MS/04 Date: Nov. 2015

HUGHES
 DESIGN ASSOCIATES

35 Ivor Place London NW1 6EA
 Tel. 020-7262 2500 Fax. 020-7224 0252
 hughesdesignassociates@yahoo.co.uk