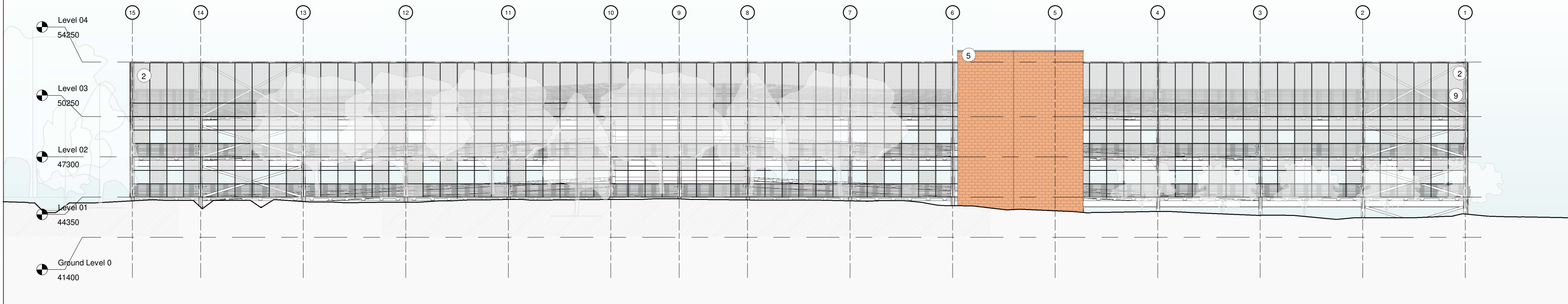
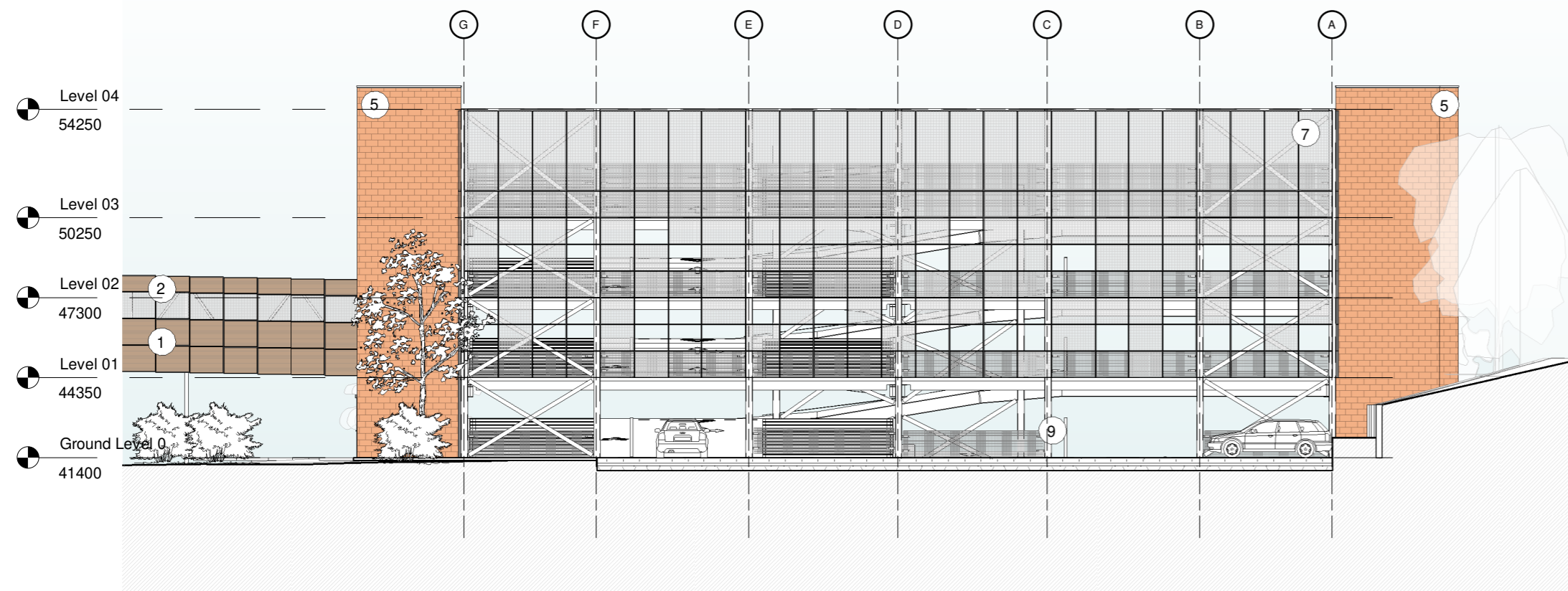


NOTES:

1. Do not scale from this drawing.
2. All dimensions are in millimeters unless noted otherwise.
3. This drawing is to be read in conjunction with all relevant Architect's and Engineer's drawings.



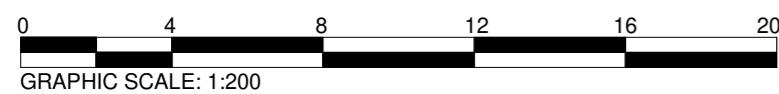
1 Proposed elevation - North
1 : 200




2 Proposed elevation - East
1 : 200

Legend

- 01 Aluminium wood-alike panels in metal frame, Valcan Vitradual 8300 Classic Oak, or similar Class A1 fire rated product.
- 02 Anodised aluminium mesh in metal frame
- 03 Non combustible fire panel, specification TBC.
- 04 External entry & exit signage, illuminated by wall mounted luminaries.
- 05 Terracotta Cladding colour and pattern to match existing hospital
- 06 Fermacell Aestuver, Fireboard 20mm thick 600-1200mm centre support or similar class A1 material with 15 minutes fire integrity. All fixings to achieve class A1. Colour: light grey. Or similar.
- 07 Steel door, Colour RAL 7015.
- 08 Aluminium window, Colour Ral 7015
- 09 Projekt W, Galvanised Integra vehicle impact barrier. 8 points fixing details.
- 10 Galvanised steel structure (steel frame structure)



Project: QA HOSPITAL MSCP PORTSMOUTH	Draftsman MY	Control VV	Authorisation CPB
Reference: Proposed elevations 2 of 2	Phase: Preliminary		
	Client: Noviniti	Scale: 1:300 @ A3	
Ballast Nedam Parking 3 rd Floor 70 Gracechurch Street London EC3V 0HR United Kingdom			Date: 12/02/2021 Version P03
	Tel: +31 (0)30 285 30 30 E-mail: office@bnparking.co.uk	Project Number: 0039 Drawing Number: J1708-STRIFE-XX-01-DR-AX-30502	ext. rev: int. rev:
© Ballast Nedam Parking			