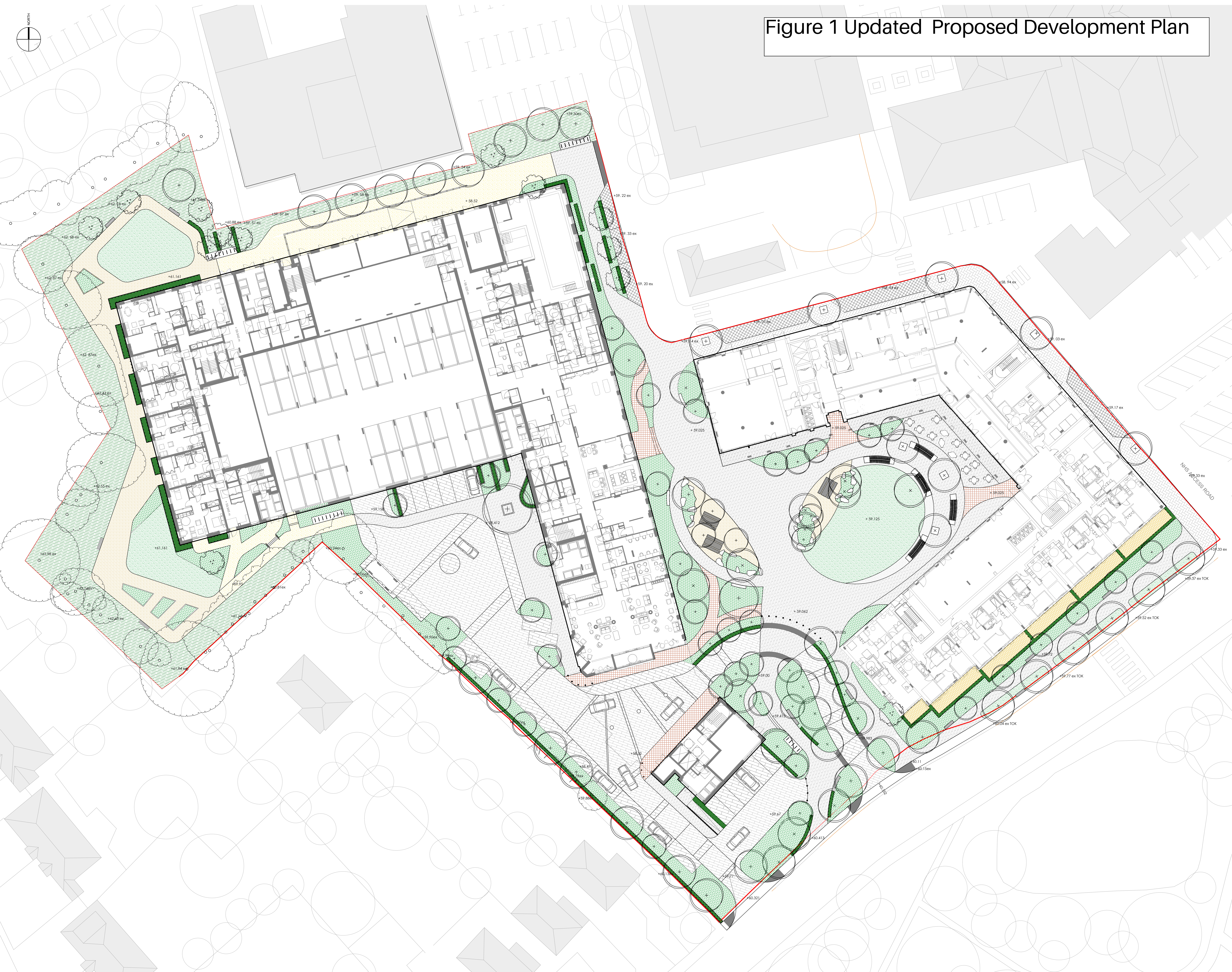


# Figure 1 Updated Proposed Development Plan



GENERAL NOTES:  
 This drawing remains the copyright of Andy Sturgeon Garden Design Limited.  
 All dimensions to be checked prior to commencement of any works,  
 and/or preparation of any shop drawings on site.  
 Any dimensional discrepancies and alterations to be referred to the designer.  
**DO NOT SCALE FROM THIS DRAWING.**

- KEY**
- Existing trees retained
  - Proposed Trees.
  - Proposed Multi-stem Tree
  - Paving type 1
  - Paving type 2
  - Paving type 3
  - Paving type 4
  - Paving type 5
  - Paving type 6
  - Paving type 7
  - Paving type 8
  - Paving type 9
  - Paving type 10 tactile studs
  - Paving type 12
  - Proposed Planting
  - Proposed boundary Planting
  - Feature hedge
  - Lawn
  - Seating units
  - Picnic Benches
  - Spill out furniture
  - Bike Stands
  - Boulder
  - Ballards
  - Railing
  - Tree grille type 1

<b>ANDYSTURGEON DESIGN</b> 7 Marlborough Place, Brighton BN1 1UB Tel: 01273 472753   info@andysturgeon.com   www.andysturgeon.com	
project no. <b>656_P_00_100</b> client <b>Guild Living</b> project <b>Epston</b> drawing <b>Ground floor Masterplan</b>	issue <b>P06</b> date <b>13/09/20</b> scale <b>1:400A2</b>