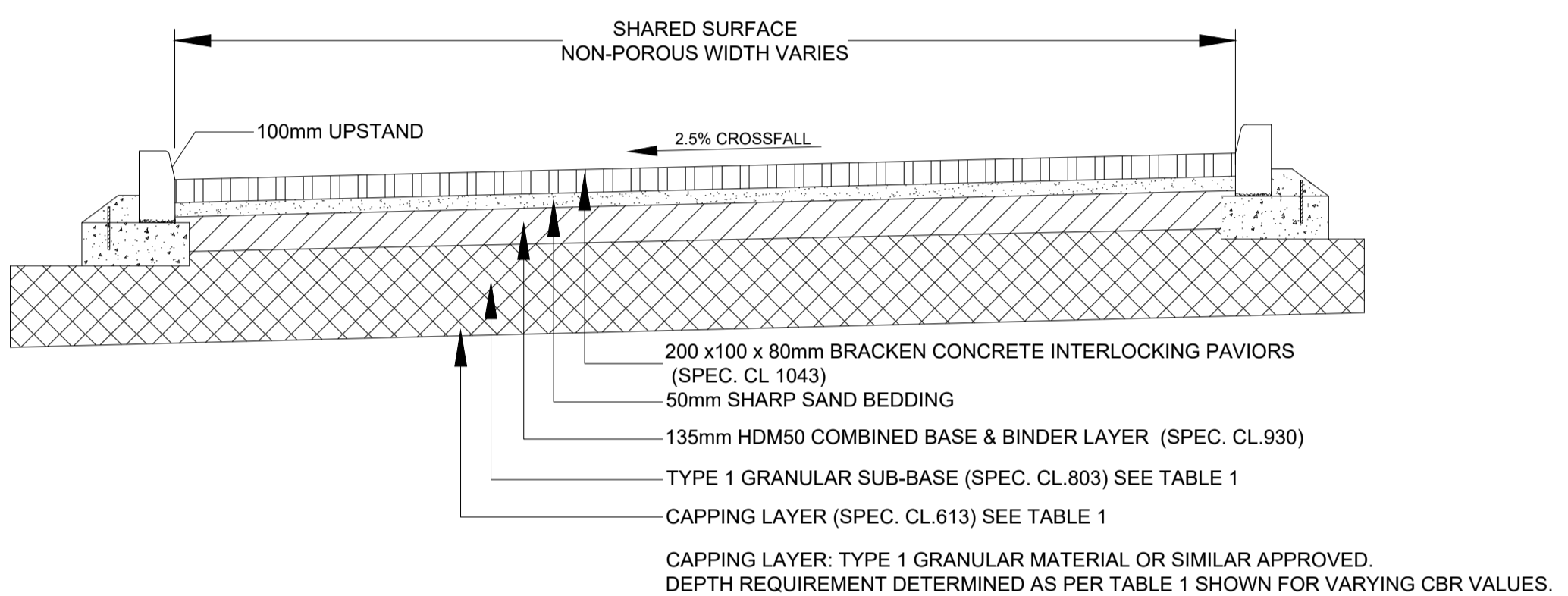


SUB BASE	CAPPING LAYER	CBR %
285mm	-	>5
150mm	450mm	2-5
150mm	600mm	<2

TABLE 1

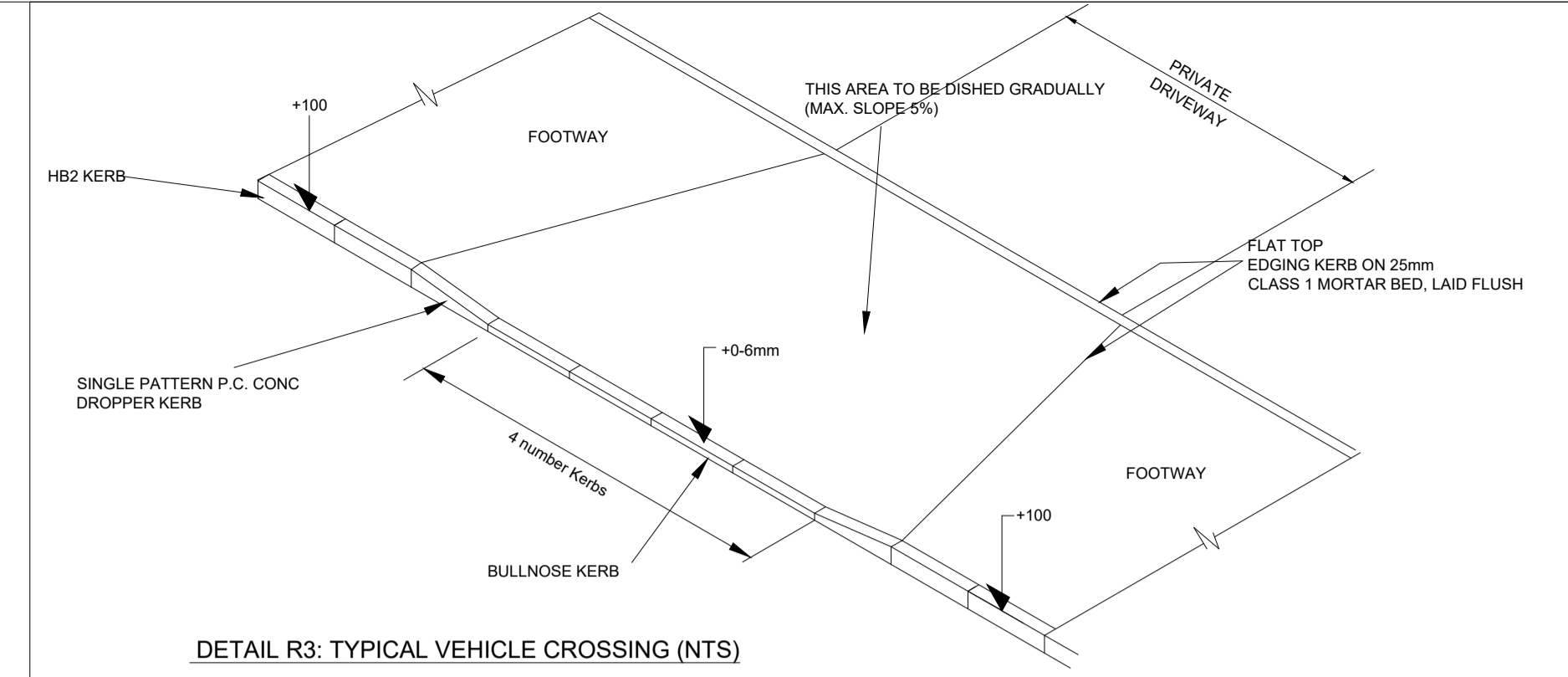
DETAIL R1 TYPICAL ROAD CONSTRUCTION - (1:20)



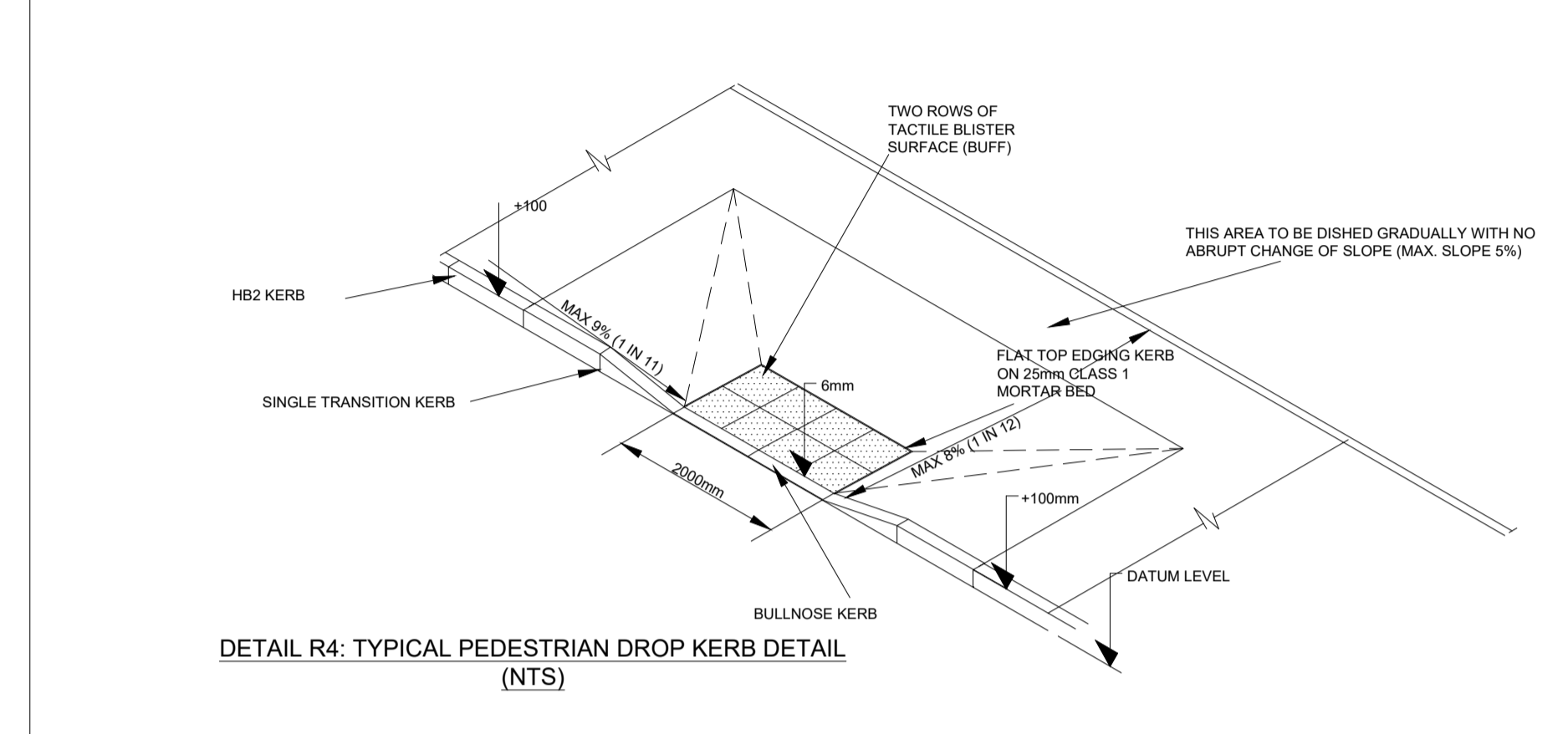
CBR %	CAPPING LAYER	SUB BASE
>5	-	305mm
2-5	450mm	150mm
<2	600mm	150mm

TABLE 1

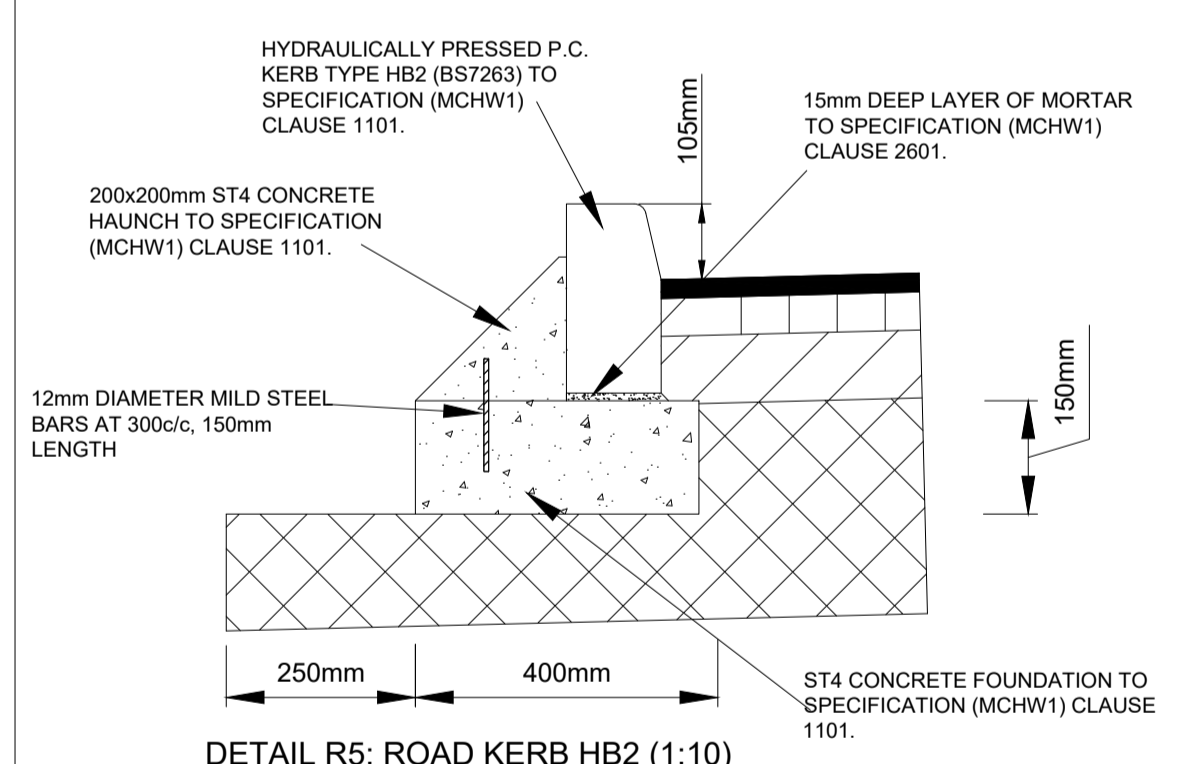
DETAIL R2: TYPICAL NON-POROUS SHARED SURFACE CONSTRUCTION (1:20)



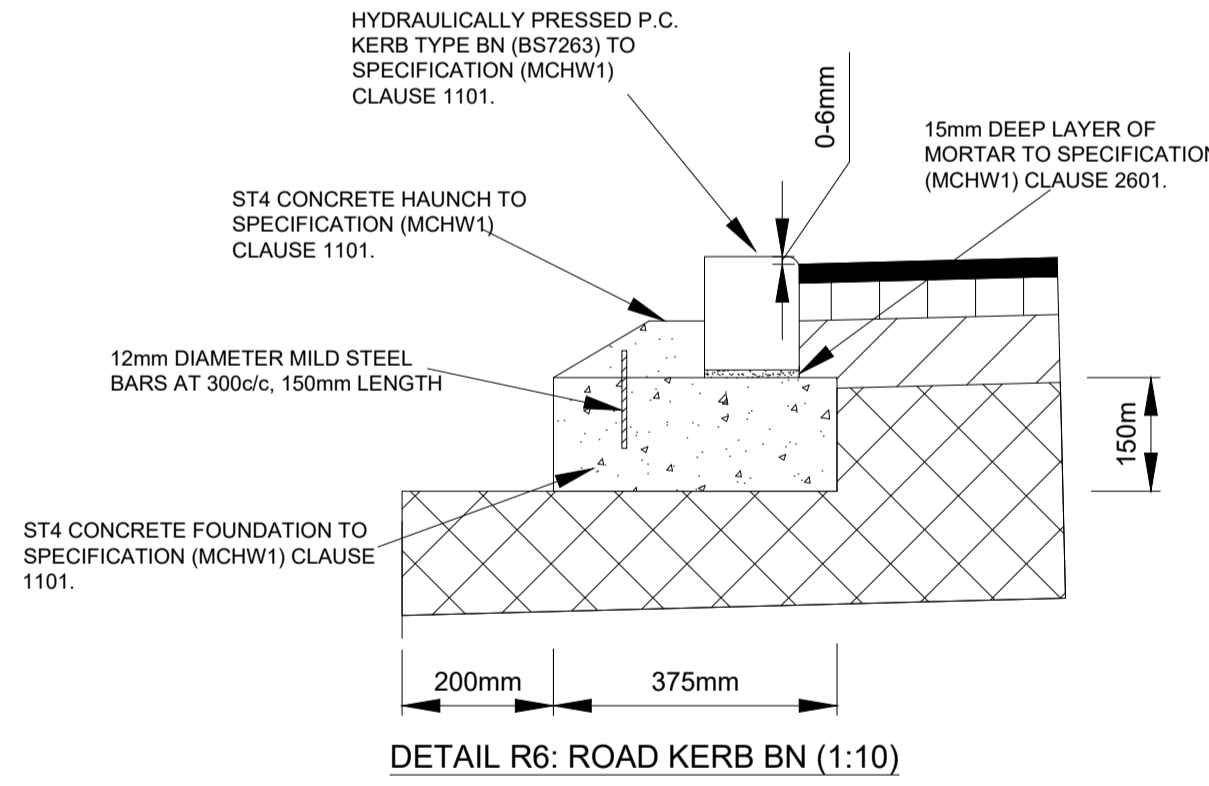
DETAIL R3: TYPICAL VEHICLE CROSSING (NTS)



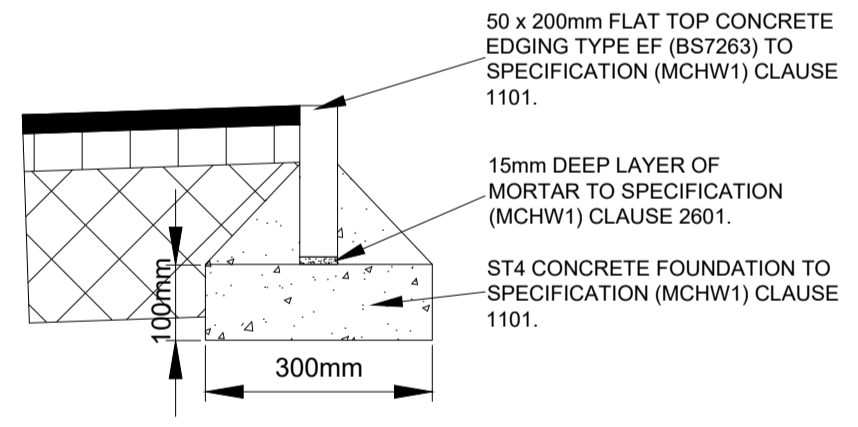
DETAIL R4: TYPICAL PEDESTRIAN DROP KERB DETAIL (NTS)



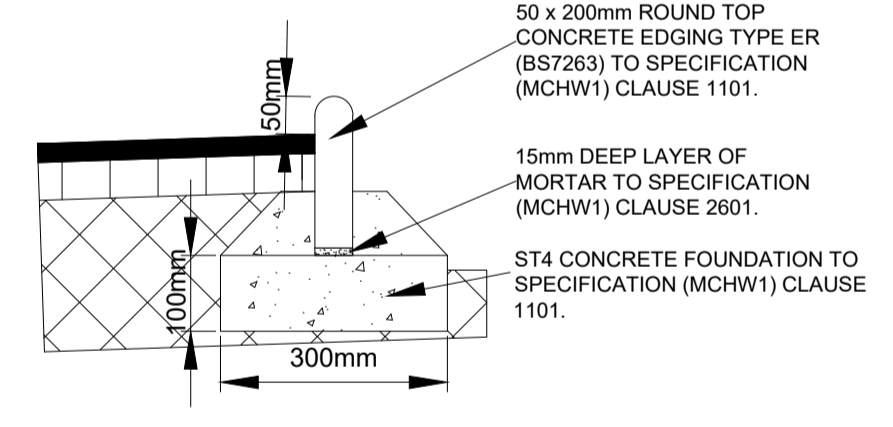
DETAIL R5: ROAD KERB HB2 (1:10)



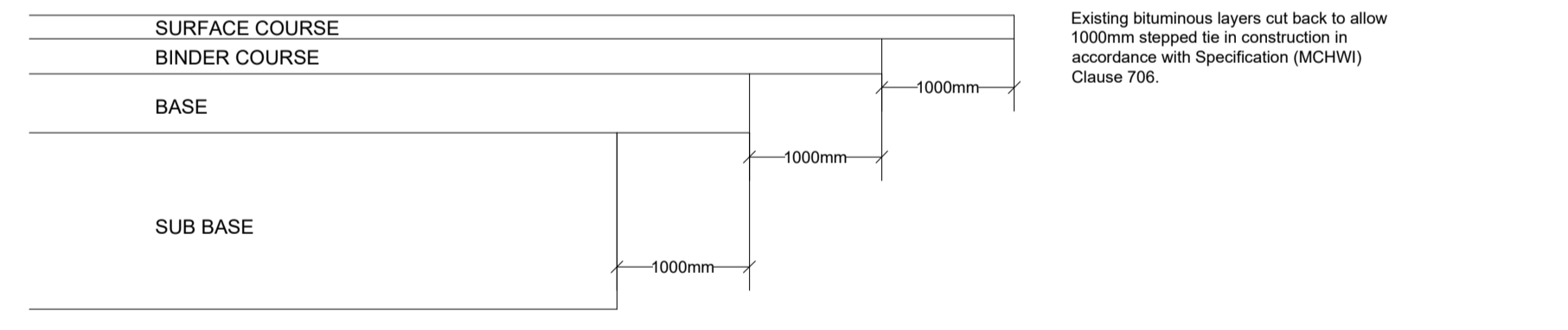
DETAIL R6: ROAD KERB BN (1:10)



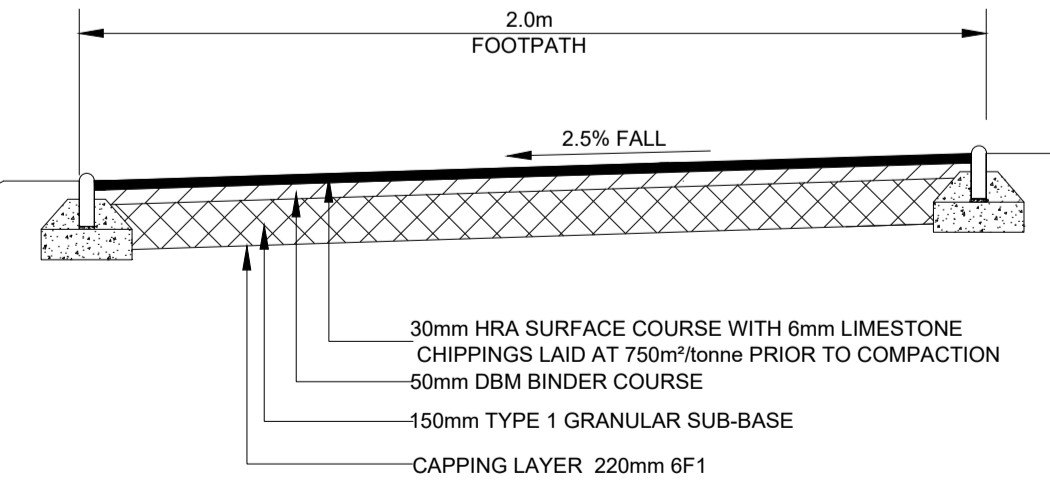
DETAIL R8: HEEL KERB EF (1:10)



DETAIL R7: HEEL KERB ER (1:10)



DETAIL R9: ROAD CONSTRUCTION TRANSVERSE TIE IN (NTS)



DETAIL R10: REMOTE FOOTPATH LINK DETAIL (1:25)

Revision	Date	Description	Initials
P01	18.02.21	RCC Issue	18.02.21

Ironside Farrar
Environmental Consultants
111 McDonald Road, EDINBURGH, EH7 4NW
0131 550 6500 | mail@ironsidefarrar.com
EDINBURGH | GLASGOW | MANCHESTER

Project Name: **Rothes Mill Residential**

Client: **Bellway Homes East Scotland**
Title: **Proposed Roads Construction Details**

Date	Paper Size	Quality Assurance
19.02.21	A1	ISO 9001:2015 SIS UKAS Certificate GB02/54339

Drawn by: **KZ**
Checked by: **NK**
Copyright Acknowledgement: Ordnance Survey © Crown Copyright 2021. All rights reserved. Licence No. AL100017966

Status: **FOR APPROVAL**
Project No.: **50785-42-003-P01**

THIS IS THE DRAWING
REFERRED TO IN THE APPLICATION
SIGNED: *Kamila Zaborowska* (AGENT)
ON BEHALF OF: **Bellway Homes East Scotland**
DATE: **24.02.2021**

Note: Please do not scale from this drawing