



3.8m FOOTPATH

Crossfall 1 in 40

Timber Edging

Typical footpath construction, see drawing 99

MAIN ROAD

EXISTING CARRIAGEWAY

1 in 40

1 in 40

Full face half battered monobeamy kerb

Diagram illustrating the lane markings and dimensions for a T-junction configuration.

**Vertical Road (Minor Access Road):**

- Markings: Dia. 1004 (5 off min), 4000 Mark, 2000 Gap, 100 Wide.

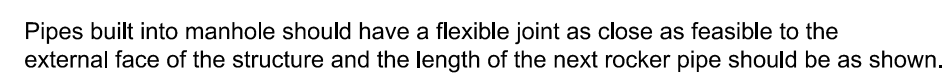
**Horizontal Road:**

- Left Side Markings: Dia. 1009, 600 Mark, 300 Gap, 100 Wide.
- Right Side Markings: Dia. 1003, 600 Mark, 300 Gap, 200 Wide.

**Intersection Area:**

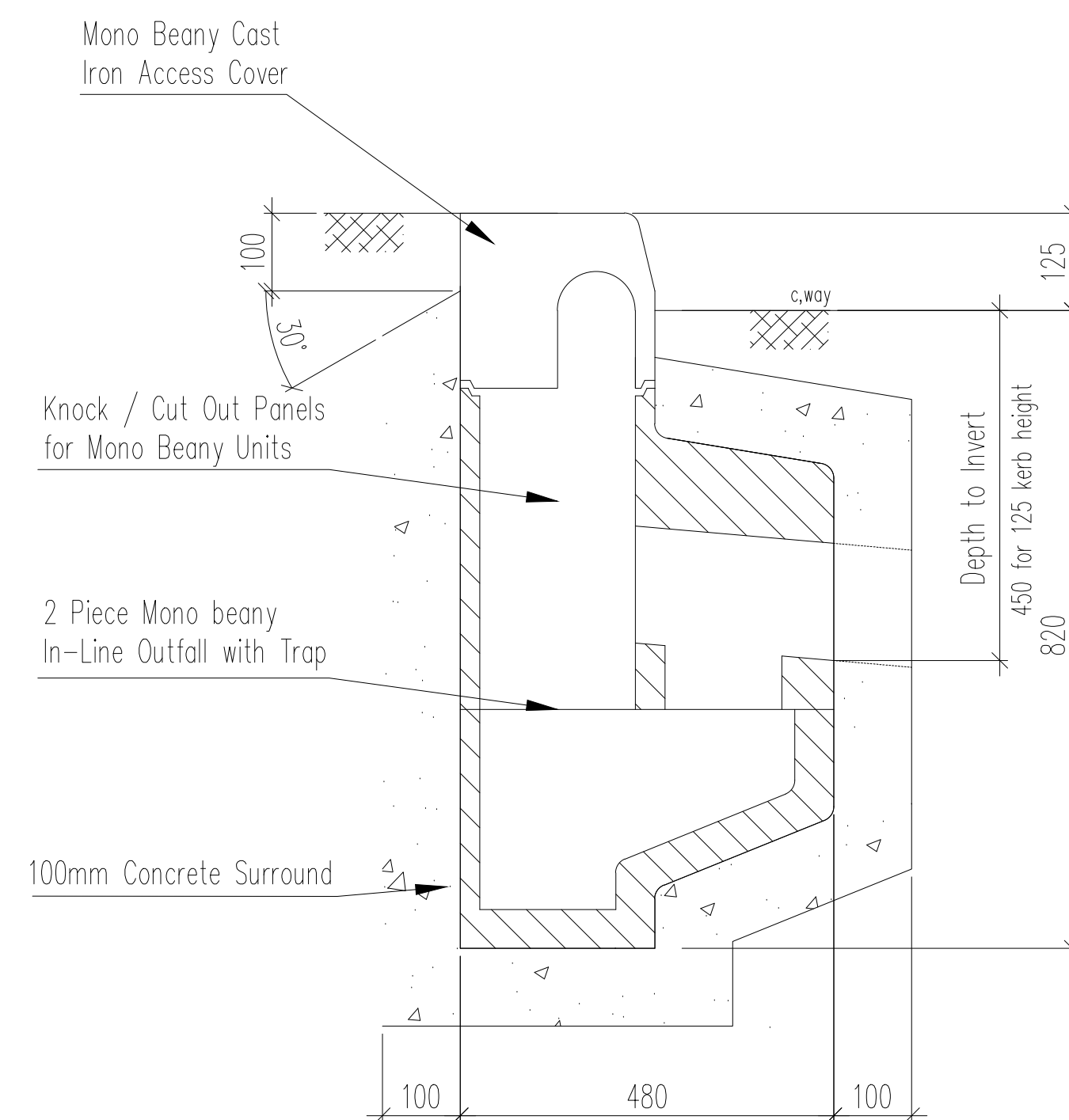
- Markings: Dia. 1023.
- Dimensions: Min 2.10m, Max 2.75m.
- Note: Min. of 5 markings from either side of this point.

**NOTE**  
Diagram Nos refer to Traffic Signs  
Regulation and general Directions



Nominal dia (mm)	Effective length (m)
150-600	0.6
601-750	1.00
over 750	1.25

All pipes entering the bottom of the manhole to have soffits level.



Mono Beany Side Outfall  
HB Access Cover

C	26/03/19	ADDED NCC MARKER & BEANY BLOCK DETAIL	AO
B	01/03/19	UPDATED LAYOUT	AO
A	28/02/19	ADDED FIN DRAIN & WHITE LINE TYPE 2 SD	AO
REV	DATE	DESCRIPTION/REASON FOR ISSUE	APPR
 <p>MTC Engineering (Cambridge) Ltd.          Ground Floor, 24 High Street          Whittlesford, Cambridgeshire, CB22 4LT          Tel (01223) 837270, fax (01223) 835648          E-mail <a href="mailto:office@mtcengineering.co.uk">office@mtcengineering.co.uk</a></p>			
<p>TITLE</p> <p><b>The Winch, 70 Main Road</b>  <b>West Winch, Norfolk</b>  <b>Norfolk County Council</b>  <b>Construction Specification</b></p>			
ORIG	DATE		
J.T.C	November 2018		
CHKD	SCALE		
	N.T.S @ A1		
APPR	DRAWING NO		
	2274-98		
			REV C
<p>©This drawing and the works depicted are the copyright of MTC Engineering (Cambridge) Ltd and may not be reproduced or amended except by written permission. No liability will be accepted for amendments made by other persons.</p>			