

EWI with Brick effect render finish.

PPC aluminium ventilation Grill plate, Colour TBC.

UPVC duct to be fitted to allow ventilation to air brick. Size of duct to match air brick size.

Air tightness sealing tape, to provide continuous seal between EWI and duct.

Duct positioned to correspond with coursing to brick effect finish

Proprietary air sealing tape to be used at junction of duct and EWI coat to provide continuous air tight seal

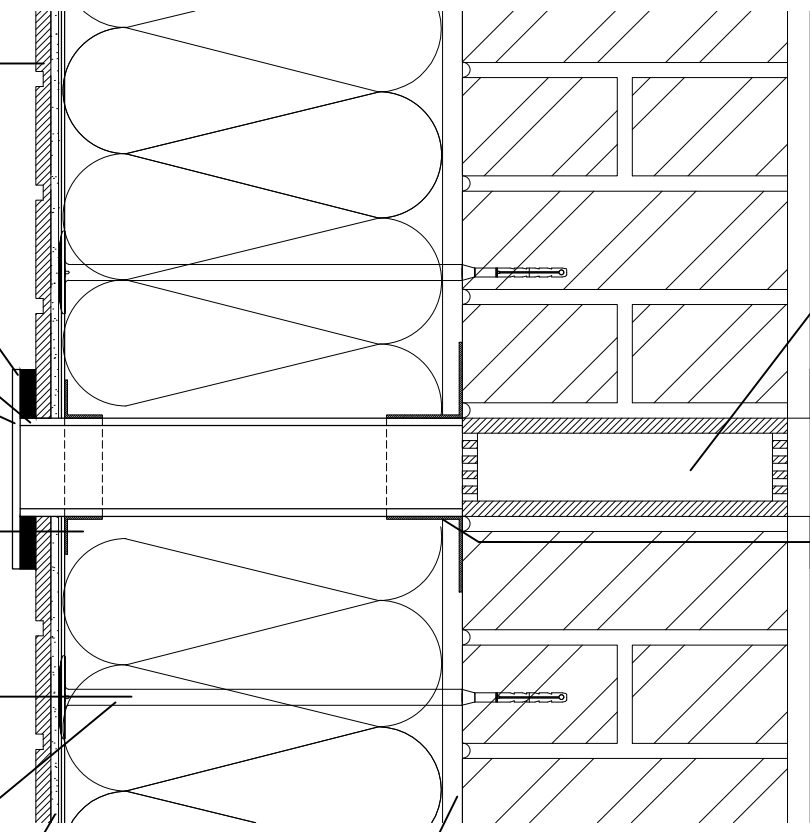
Mineral wool insulation EWI system to be installed as per manufacturers details and specification.

Mechanical anchor fixing (to suit specification)

Basecoat with mesh reinforcing with rendered brick effect finish.

Parge coat applied to face of brickwork to act as air barrier layer

NOTE:
Detail indicates air brick located in mineral wool system. Detail to be used for XPS below DPC system with duct length adjusted to suit.



Existing air brick

Proprietary air sealing tape or air tightness grommet to be used at junction of duct and parge coat. To be lapped under parge coat and sealed to extract duct.

SD16 AIR BRICK DETAIL

SAFETY, HEALTH AND ENVIRONMENTAL INFORMATION:

IN ADDITION TO THE HAZARDS / RISKS NORMALLY ASSOCIATED WITH THE TYPES OF WORK DETAILED ON THIS DRAWING, NOTE THE FOLLOWING;

Significant Residual Risks :

Action to be Taken :

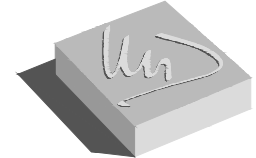
Refer to Health and Safety Plan

NOTES

REFER TO DRAWING 550-(TE)-8627 REGARDING FIRE STOPPING ARRANGEMENTS

A	05.01.21	NOTE REGARDING FIRE STOPPING ADDED	JLW	PT
REV	DATE	AMENDMENTS	BY	APRD

Do not scale from this drawing.
All dimensions must be checked on site by the Contractor prior to the commencement of any fabrication or building works.
Where applicable, dimensions and details are to be read in conjunction with specialist consultants' drawings and/or other specifications; any disparity is to be brought to the attention of Michael Dyson Associates Limited prior to the commencement of any fabrication or building works.
©This drawing is the property and copyright of Michael Dyson Associates Limited; it shall not be copied to any other party without the express written consent of an authorised director of Michael Dyson Associates Limited.



Michael Dyson associates ltd

Excellence in Housing Consultancy

West House, Meltham Road, Honley,
Huddersfield HD9 6LB
t. 01484 666888 f. 01484 664186
w. www.mdysen.co.uk

CLIENT :
CONNEXUS HOUSING LTD

PROJECT :
**CONNEXUS WARMER HOMES ERDF PROJECT
SHROPSHIRE / HEREFORDSHIRE**

TITLE :
**SECTION DETAILS (SD16)
AIR BRICK DETAIL**

DRAWN BY :	JMY	APPROVED BY :	
DATE :	DEC/2020	DATE :	
SCALE :	1:5	ORIGINAL DRAWING SIZE 420 x 297 - A3	
DRAWING No :	316-(TE)-8627-(SD16)	REV.	A