

LOWER BOYNDON ROAD PLANTING SCHEDULE

Number	Species	Height	Girth	Pot Size	Symbol	Specification
1 No.	Apple 'Red Devil'	1.0-1.2m		5-7 SL		Maiden MM106 rootstock
1 No.	Apple Bramley's Seedling	1.0-1.2m		5-7 SL		Maiden MM106 rootstock
3 No.	Betula utilis jacquemontii 'Moonbeam'	1.5-1.8m		10-15L		Or bare root
3 No.	Malus 'Royal Beauty'	1.5-1.8m	6-8cm	10-15L		
1 No.	Pear 'Concorde'	1.0-1.5m		5-7 SL		QUINCE A
1 No.	Plum Marjories Seedling	1.0-1.5m		5-7 SL		maiden St.Jul A
2 No.	Prunus subhirtella 'Aumtumnalis Rosea'	1.8-2.0m	6-8cm	10-15L		
3 No.	Pyrus calleryana 'Chanticleer'	2.0-2.5m	8-10cm	20-25L		

Number	Species	Density	Pot Size	Height	Symbol
9 No.	Abelia grandiflora	0.75m <sup>2</sup>	4L	60-80cm	
5 No.	Berberis thunbergii 'Rose Glow'	1m <sup>2</sup>	3L	60-80cm	
3 No.	Choisya ternata 'Sundance'	1m <sup>2</sup>	3L	60-80cm	
11 No.	Cistus 'Grayswood Pink'	1m <sup>2</sup>	2L	30-40cm	
4 No.	Cotoneaster 'Cornubia'	Counters	5-7 SL	100-125cm	
12 No.	Escallonia 'Red Dream'	1m <sup>2</sup>	4L	60-80cm	
7 No.	Euonymus fortunei 'Emerald 'n' Gold'	1m <sup>2</sup>	2L	40-60cm	
11 No.	Euonymus fortunei 'Silver Queen'	1m <sup>2</sup>	3L	40-60cm	
11 No.	Lavandula intermedia 'Alba'	1m <sup>2</sup>	2L	30-40cm	
7 No.	Potentilla fruticosa 'Elizabeth'	1m <sup>2</sup>	2L	30-40cm	
7 No.	Rosmarinus officinalis 'Roseus'	1m <sup>2</sup>	2L	30-40cm	

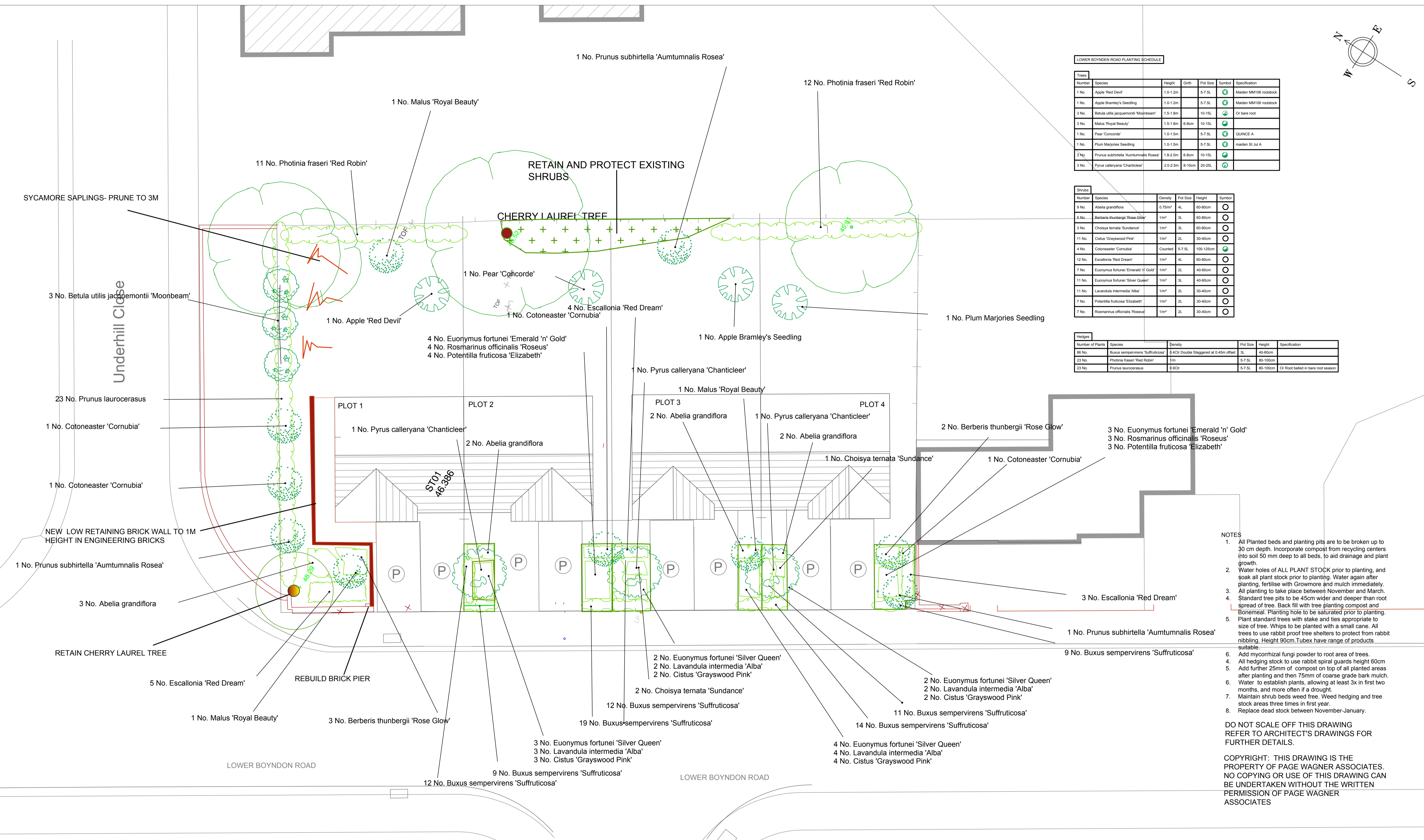
Number of Plants	Species	Density	Pot Size	Height	Specification
86 No.	Buxus sempervirens 'Suffruticosa'	0.42m <sup>2</sup> Double Staggered at 0.45m offset	3L	40-60cm	
23 No.	Photinia fraseri 'Red Robin'	1m	5-7 SL	80-100cm	
23 No.	Prunus laurocerasus	0.92m <sup>2</sup>	5-7 SL	80-100cm	Or Root balled in bare root season

NOTES

- All Planted beds and planting pits are to be broken up to 30 cm depth. Incorporate compost from recycling centers into soil 50 mm deep to all beds, to aid drainage and plant growth.
- Water holes of ALL PLANT STOCK prior to planting, and soak all plant stock prior to planting. Water again after planting, fertilise with Growmore and mulch immediately.
- All planting to take place between November and March.
- Standard tree pits to be 45cm wider and deeper than root spread of tree. Back fill with tree planting compost and Bonemeal. Planting hole to be saturated prior to planting.
- Plant standard trees with stake and ties appropriate to size of tree. Whips to be planted with a small cane. All trees to use rabbit proof tree shelters to protect from rabbit nibbling. Height 90cm. Tubex have range of products suitable.
- Add mycorrhizal fungi powder to root area of trees.
- All hedging stock to use rabbit spiral guards height 60cm
- Add further 25mm of compost on top of all planted areas after planting and then 75mm of coarse grade bark mulch.
- Water to establish plants, allowing at least 3x in first two months, and more often if a drought.
- Maintain shrub beds weed free. Weed hedging and tree stock areas three times in first year.
- Replace dead stock between November-January.

DO NOT SCALE OFF THIS DRAWING REFER TO ARCHITECT'S DRAWINGS FOR FURTHER DETAILS.

COPYRIGHT: THIS DRAWING IS THE PROPERTY OF PAGE WAGNER ASSOCIATES. NO COPYING OR USE OF THIS DRAWING CAN BE UNDERTAKEN WITHOUT THE WRITTEN PERMISSION OF PAGE WAGNER ASSOCIATES



Revisions

JOB TITLE: LOWER BOYNDON ROAD MAIDENHEAD  
 CLIENT: MALVERN ESTATES PLC  
 DRAWING TITLE: **PLANTING PLAN**  
 DRAWING NUMBER: PW/LBR\_PL1  
 SCALE: 1:100 @ A1  
 DATE: 16.4.2020  
 Drawn By: PAW

PAGE WAGNER ASSOCIATES LTD.  
 BOUNDARY COTTAGE, SALTERS LANE, LOWER MOOR  
 PERSHORE, WORCESTERSHIRE, WR10 2PO  
 TEL: 01386 860996 email:pennwagner@pagewagner.com  
 www.pagewagner.com