

REFUSE AND WASTE STRATEGY

PROPOSED RESIDENTIAL SCHEME

THE OLD RECTORY, AYLSHAM ROAD, FELMINGHAM, NR28 0LD

26th FEBRUARY 2021



1.0 INTRODUCTION

- 1.1 This Refuse and Waste Strategy has been prepared by ADG Architects on behalf of LPB Homes to support the application for 'Proposed demolition of link single storey blocks and conversion of existing care home into 20 No. residential apartments.'
- 1.2 The purpose of this document is to illustrate to North Norfolk District Council how the waste generated as part of the proposed apartments will be stored until collection and how a refuse vehicle will service the site.

2.0 SITE LOCATION

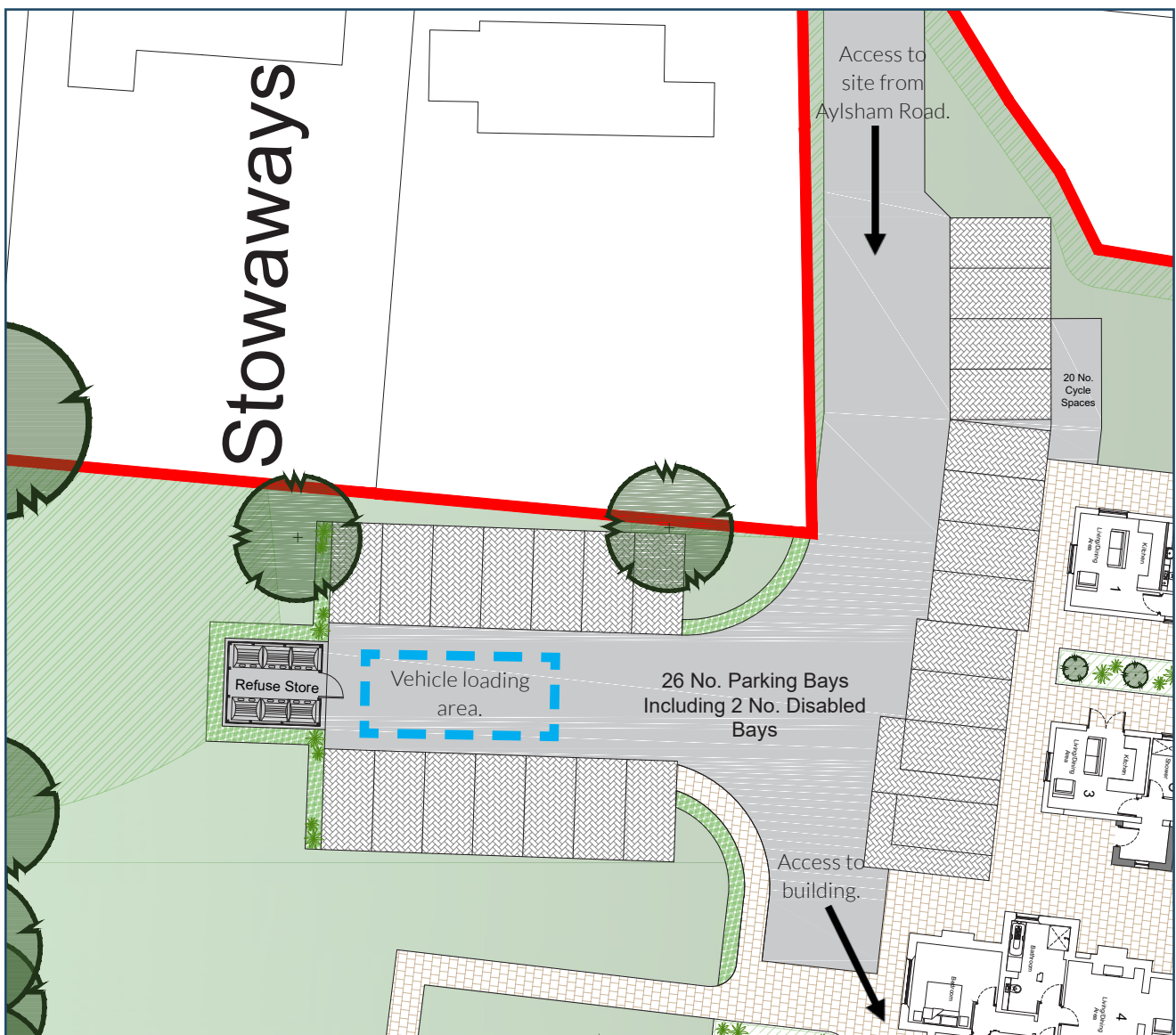
- 2.1 The site is located on land South of Aylsham Road, Felmingham and is generally a level site.
- 2.2 The site is approximately 5,780 m² (0.578 hectares). The building is a disused care home that has remained unoccupied since 2019.
- 2.3 The proposal is to convert the existing Old Rectory building into 20 No. residential apartments with associated parking and landscaping. The car parking will be located along the North boundary and will provide vehicle access to the refuse store.

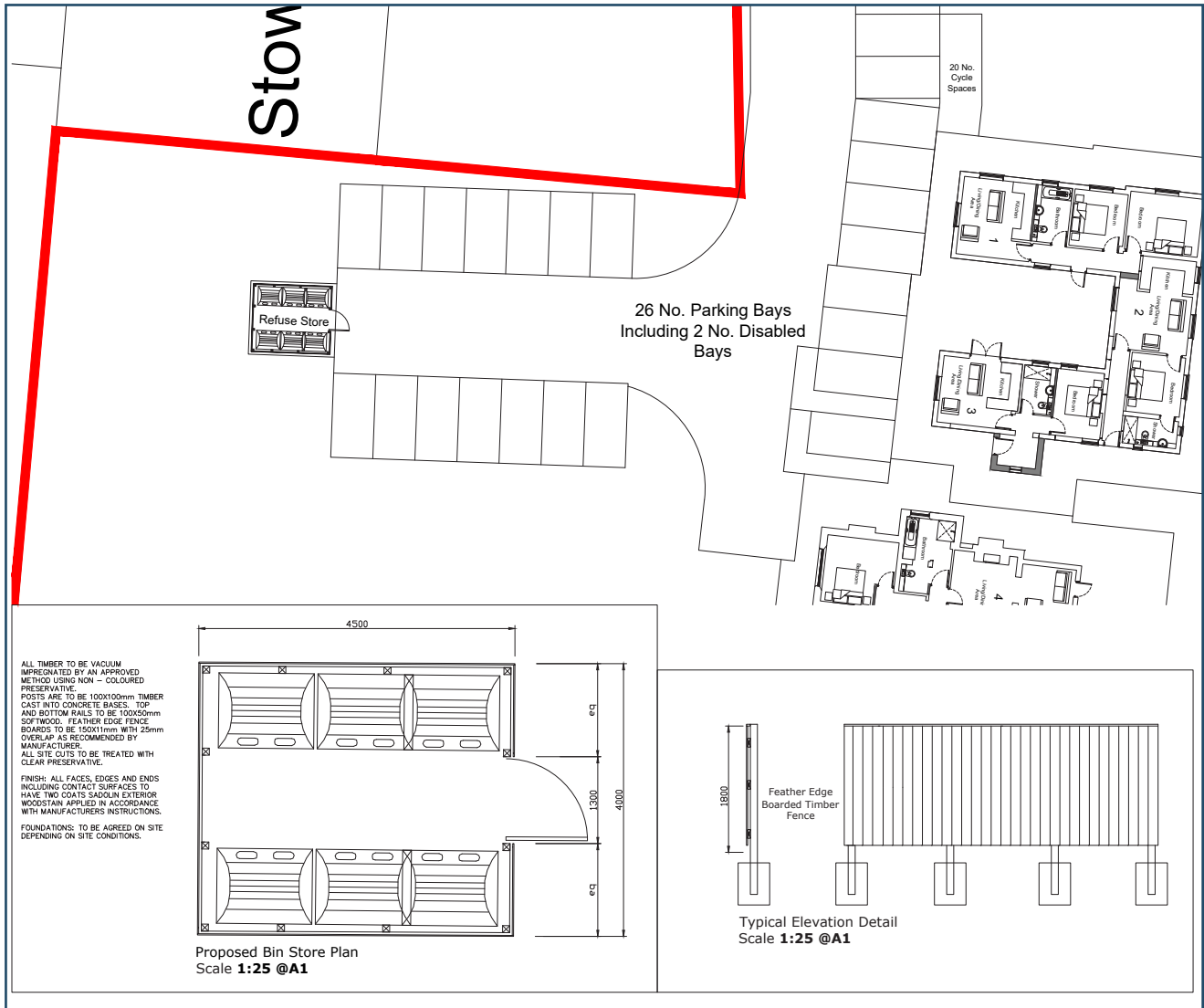


3.0 PROPOSAL AND WASTE STRATEGY

- 3.1 The refuse storage for the proposed apartments will be located at the West of the car parking bays. A turning head has been provided to allow a refuse vehicle to turn within the site and leave in a forward gear.
- 3.2 The residents would take their waste to the refuse store which would be collected weekly by the local council. The refuse store will provide a recycling facility to encourage residents to recycle their waste.

- 3.3 The dates and times of the collection will be organised with the local authority, which will be a similar schedule to the arrangements with the care home that previously occupied the site.
- 3.4 The bin store structure will be 1800mm high close boarded fence with access gate.





Proposed Bin Store Detail



Typical 1100 litre container

Specification:

Construction Material: Galvanised Steel

Height - 1410mm

Width - 1265mm

Depth 1000mm

Capacity - 1100mm

Domestic and Commercial recycling containers built to European Standard EN 840.

EN 840 is the recognised European Standard for mobile waste containers of various capacities and specifications.

Standard Features:

Full section comb lifting bar.

Fully welded internal seams.

Danish handles for easy manoeuvrability.

Supplied with black recycling lid with flap protected slot entry.

Diamond key operated lid lock.

4x 200mm steel centred, rubber tyred castors

2x foot operated parking brakes.

Standard Safety Features:

Luminous safety chevrons to the front of the container.

Safety operating instructions on both sides of the lid.



Ground Floor Suite, 6 Pioneer Court,
Morton Palms Business Park,
Darlington,
County Durham,
DL1 4WD
T. 01325 464 11
www.adgarchitects.co.uk