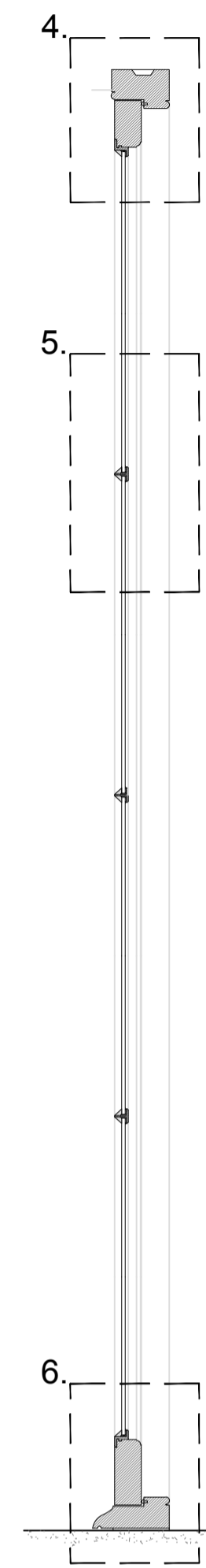
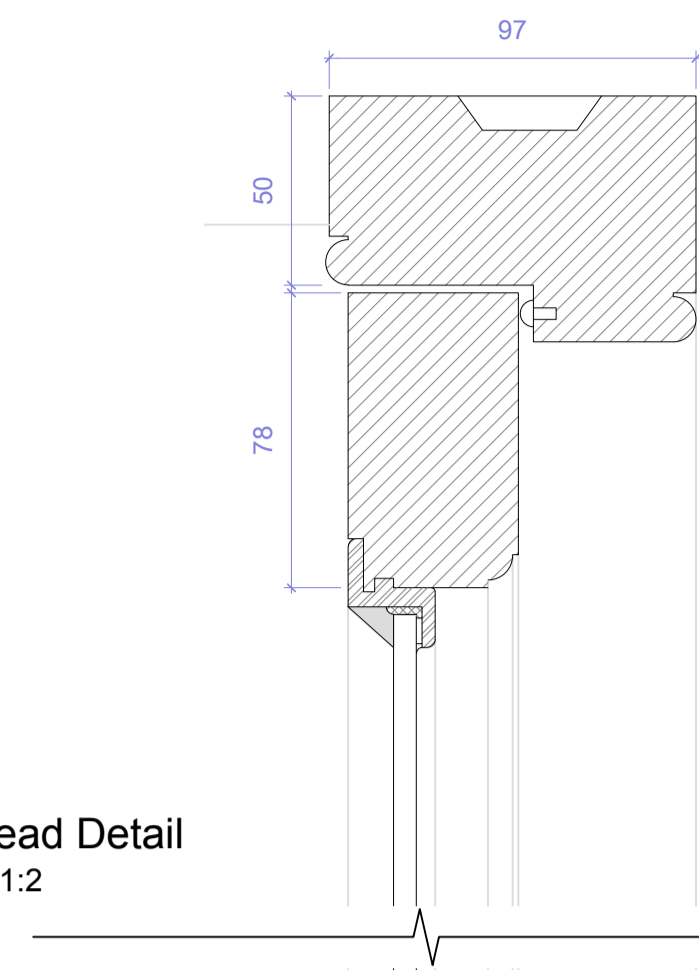


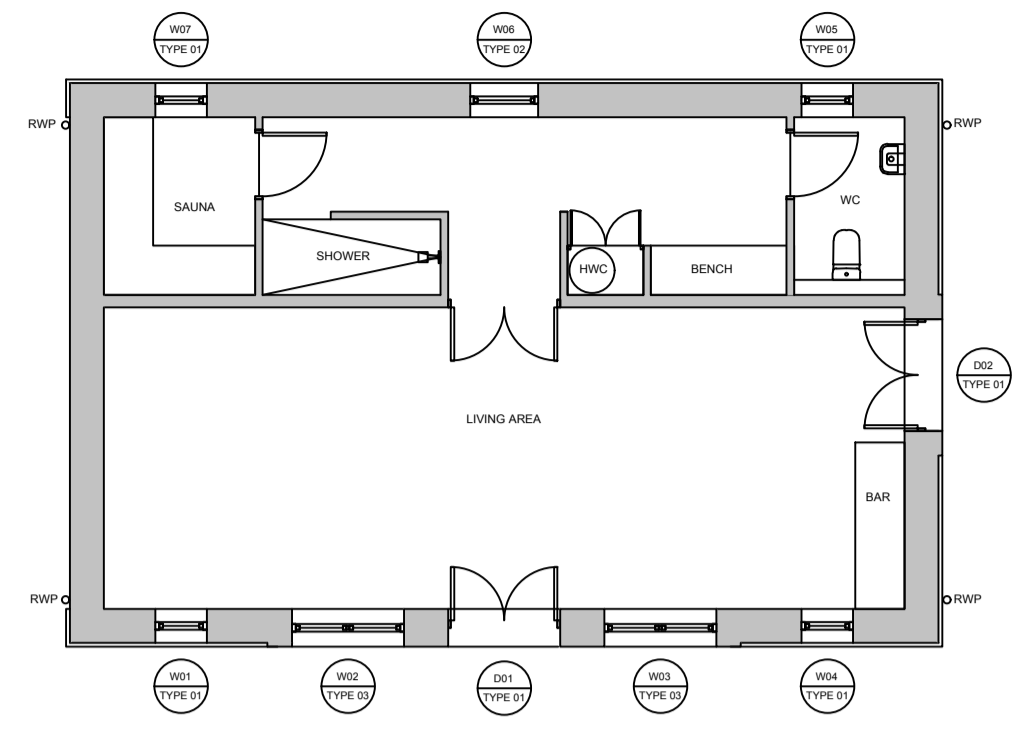
Proposed Elevation
scale 1:10



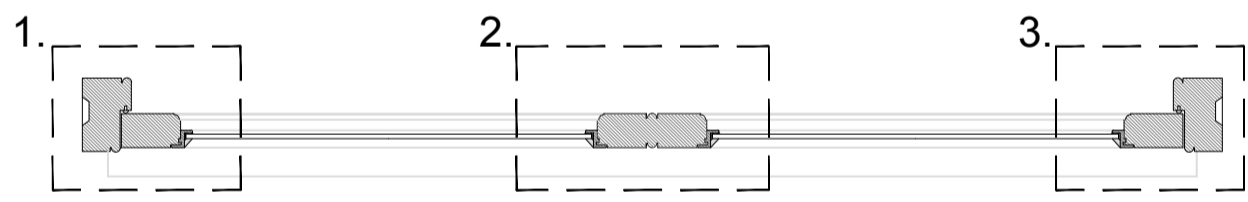
Proposed Section
scale 1:10



4. Head Detail
scale 1:2

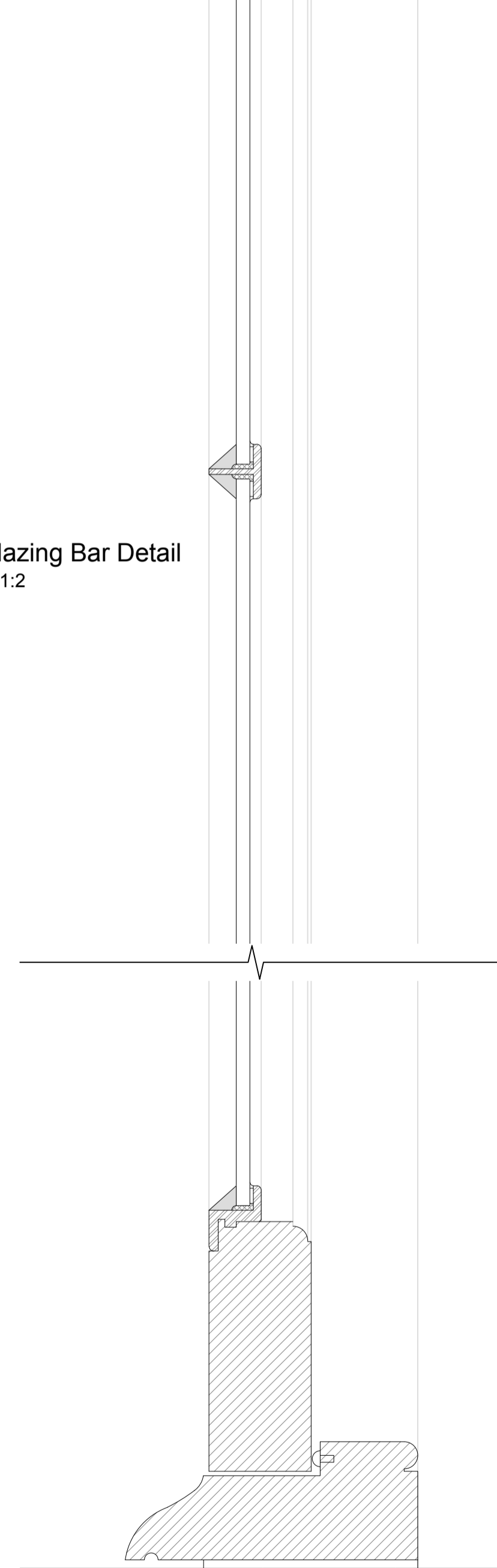


Key Plan
scale 1:100@A2

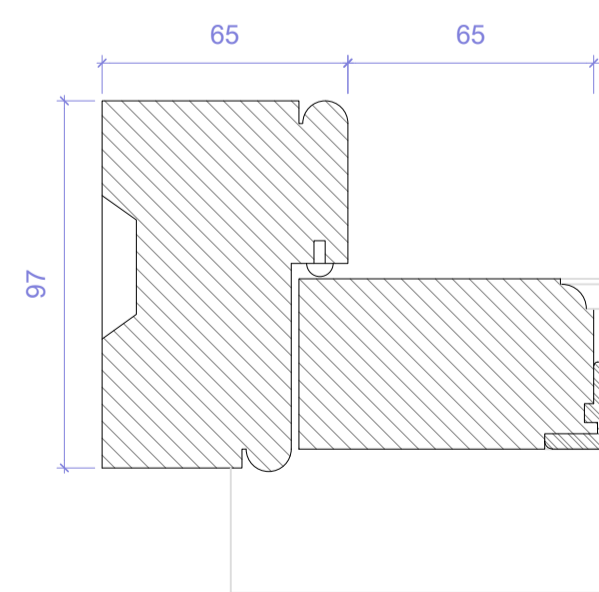


Proposed Plan
scale 1:10

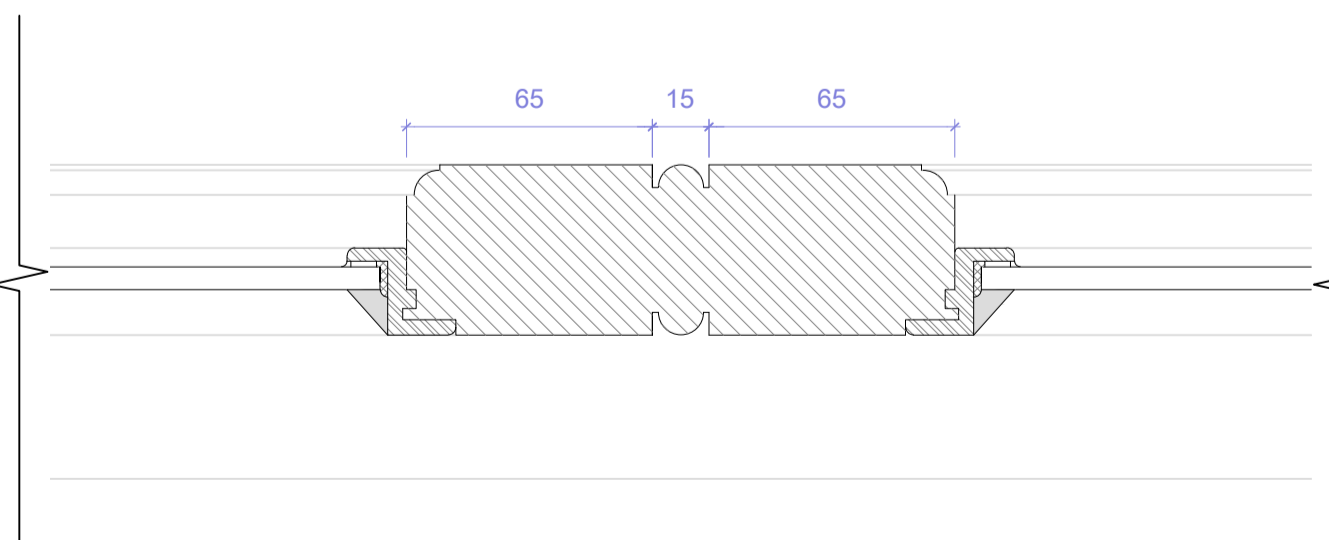
NOTE: Window is to be made of stable hardwood.
Glazed panels to be formed by inserting fixed metal casements with through glazing bars (i.e. not surface mounted)



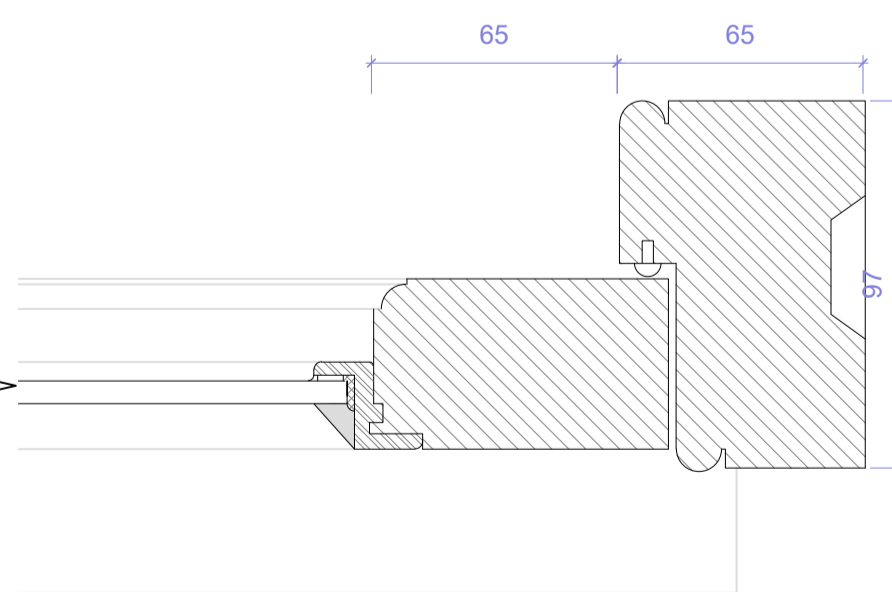
5. Glazing Bar Detail
scale 1:2



1. Jamb / Stile Detail
scale 1:2



2. Muntin Bar Detail
scale 1:2



3. Jamb / Stile Detail
scale 1:2

6. Cill Detail
scale 1:2

Rev	Description	Date	Drawn	Chk'd

A Dimensions added to elevations. 9/16/2020 SB SK

Copyright © Pegasus Group Ltd. All rights reserved. Pegasus Group Ltd. is a registered company with Companies House No. 08500008. Pegasus Group Ltd. is a registered company with Companies House No. 08500008. Pegasus Group Ltd. is a registered company with Companies House No. 08500008. Pegasus Group Ltd. is a registered company with Companies House No. 08500008.

NOTES:
Contractors are not to scale dimensions from this drawing with all dimensions to be checked on site.

PLANNING DRAWING

CHERINGTON PARK, TETBURY

PROPOSED WINDOWS - TYPE 03

