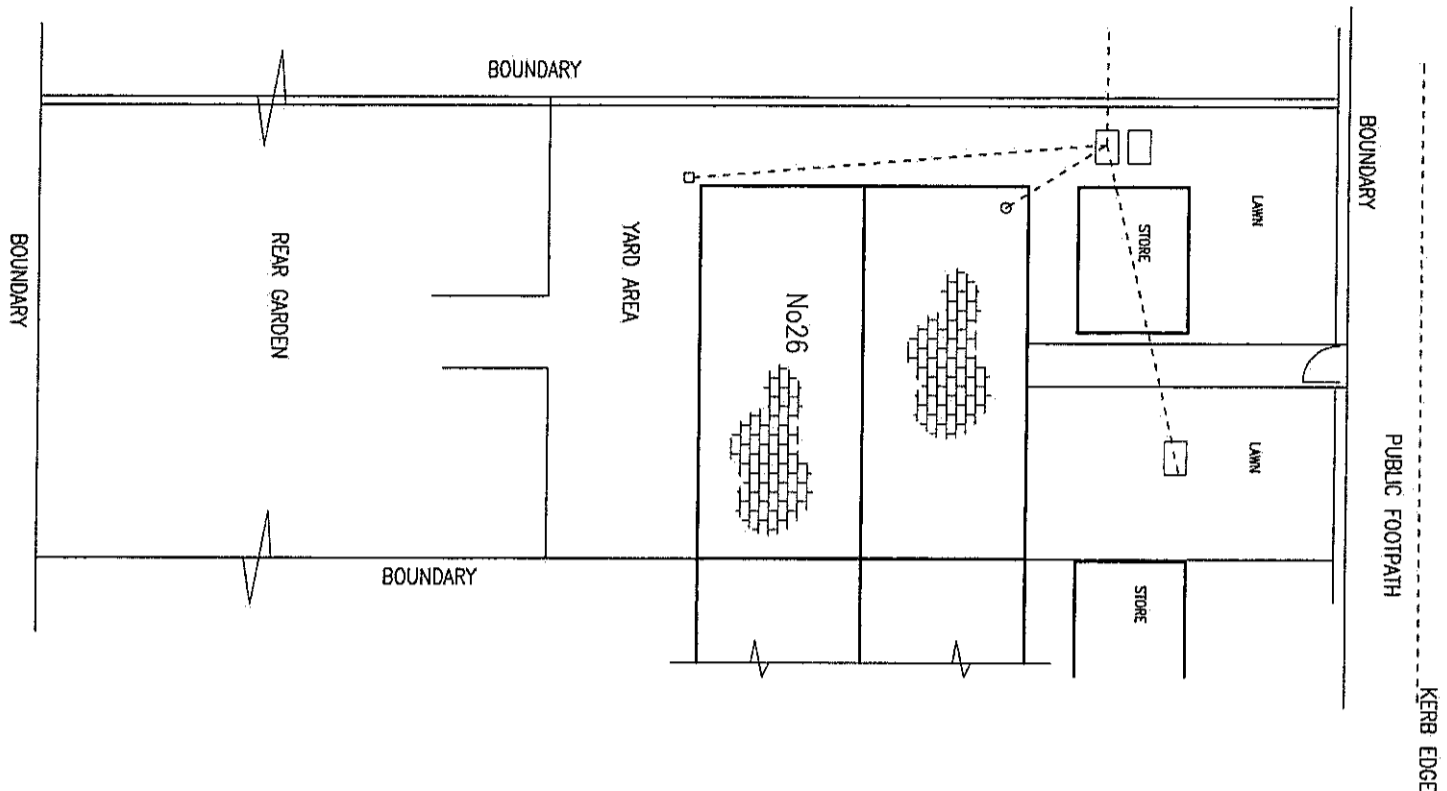
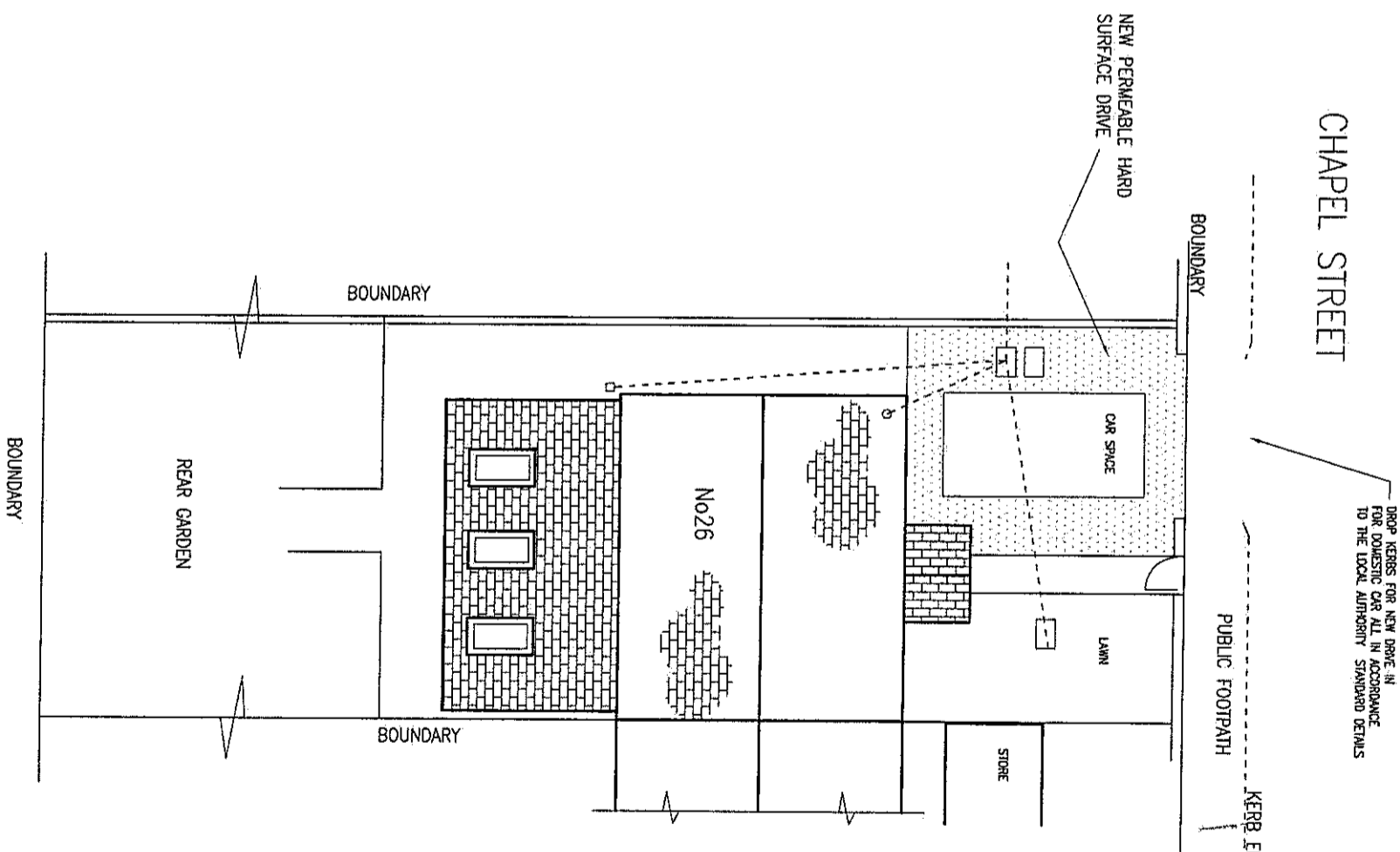


NORTH

CHapel STREET

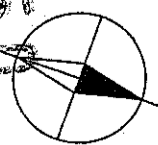


CHapel STREET



DROP KERB FOR NEW DRIVE IN ACCORDANCE WITH LOCAL AUTHORITY STANDARD DETAILS

21/0150



NORTH

RECEIVED
PENALLI ARCHITECTS
15 FEB 2011

DRG REF 21/HS/101

EXISTING AND PROPOSED SITE LOCATION PLANS---26 CHAPEL STREET

SCALE 1:150 ON A3