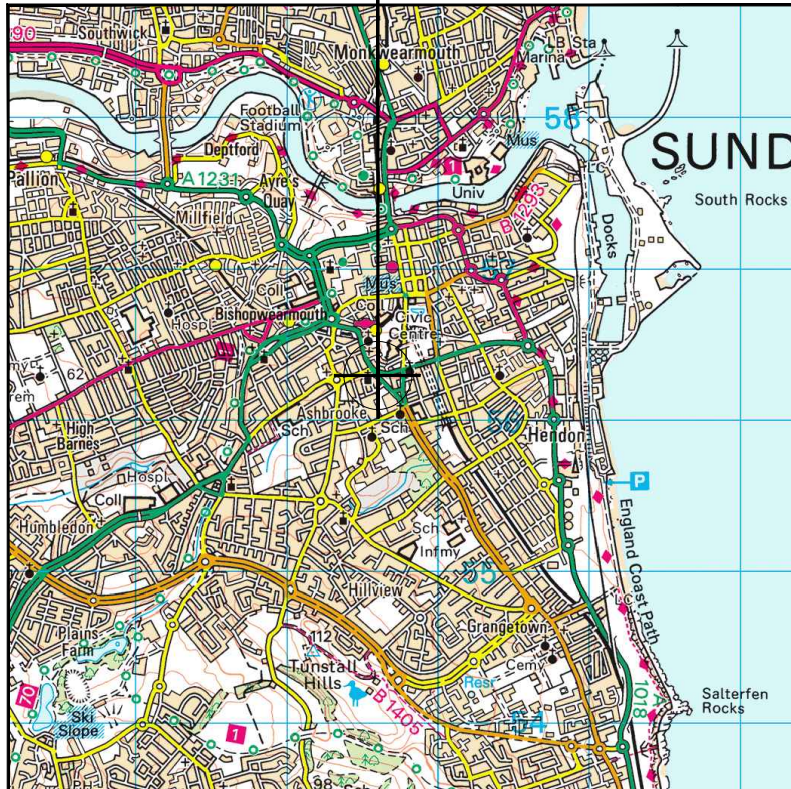
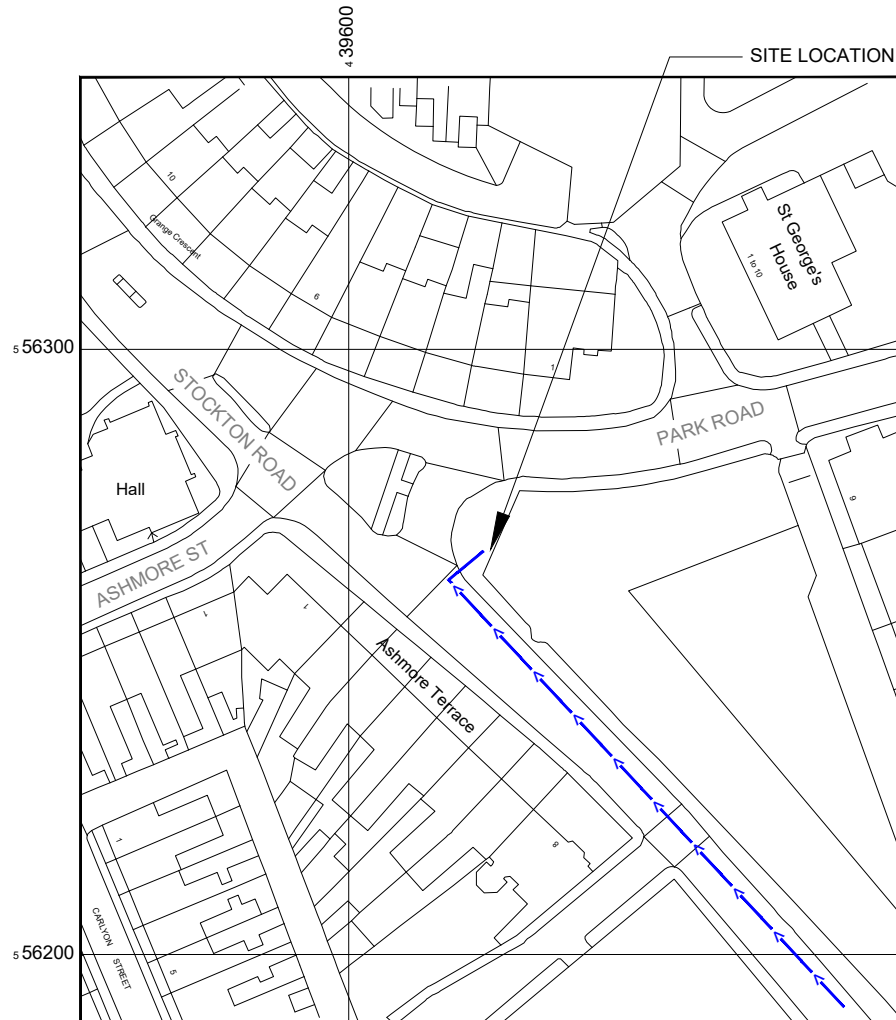
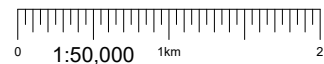


SITE LOCATION



Reproduced by permission of Ordnance Survey on behalf of the Controller of Her Majesty's Stationery Office All rights reserved. © Crown Copyright licence no. 100022432

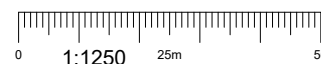
SITE AREA PLAN



Reproduced by permission of Ordnance Survey on behalf of the Controller of Her Majesty's Stationery Office All rights reserved. © Crown Copyright licence no. 100022432

NGR E: 439623 N: 556267

SITE LOCATION PLAN



SITE PHOTOGRAPH



GOOGLE MAPS QR CODE
 GOOGLE MAPS - <https://tinyurl.com/y5ock8xv>
 STREETVIEW - <https://tinyurl.com/y4s9comy>

NOTES:

- ALL DIMENSIONS IN MM UNLESS OTHERWISE NOTED.

Access Route To Site:

| REV | MODIFICATION | BY | CH | DATE |
|-----|-------------------------------------|----|-----|----------|
| B | Changed pole height from 20m to 15m | CZ | RWB | 02.03.21 |
| A | Issued for Planning | MF | RWB | 20.01.21 |



Hutchison 3G UK Limited
 Star House, 20 Grenfell Road
 Maidenhead, SL6 1EH
 Tel: 01628 765 000
 Fax: 01628 765 001

H3G Base Station Information line:
 0845 6043000
 Available 8am-8pm Monday to Friday

Design Consultant & Principal Contractor:



Great British Communications
 Lapping House, Block 3 Forward Point,
 Ton House Lane, Widnes, Cheshire, WAB 0SL
 t. 44 (0)151 420 4128
www.gbcservices.co.uk

Site Name: STOCKTON ROAD

3UK Cell ID: SDL14733

Address:
 STOCKTON ROAD
 SUNDERLAND
 TYNE AND WEAR
 SR2 7DE

Title: 002 SITE LOCATION PLAN

Project: H3G UNILATERAL SW

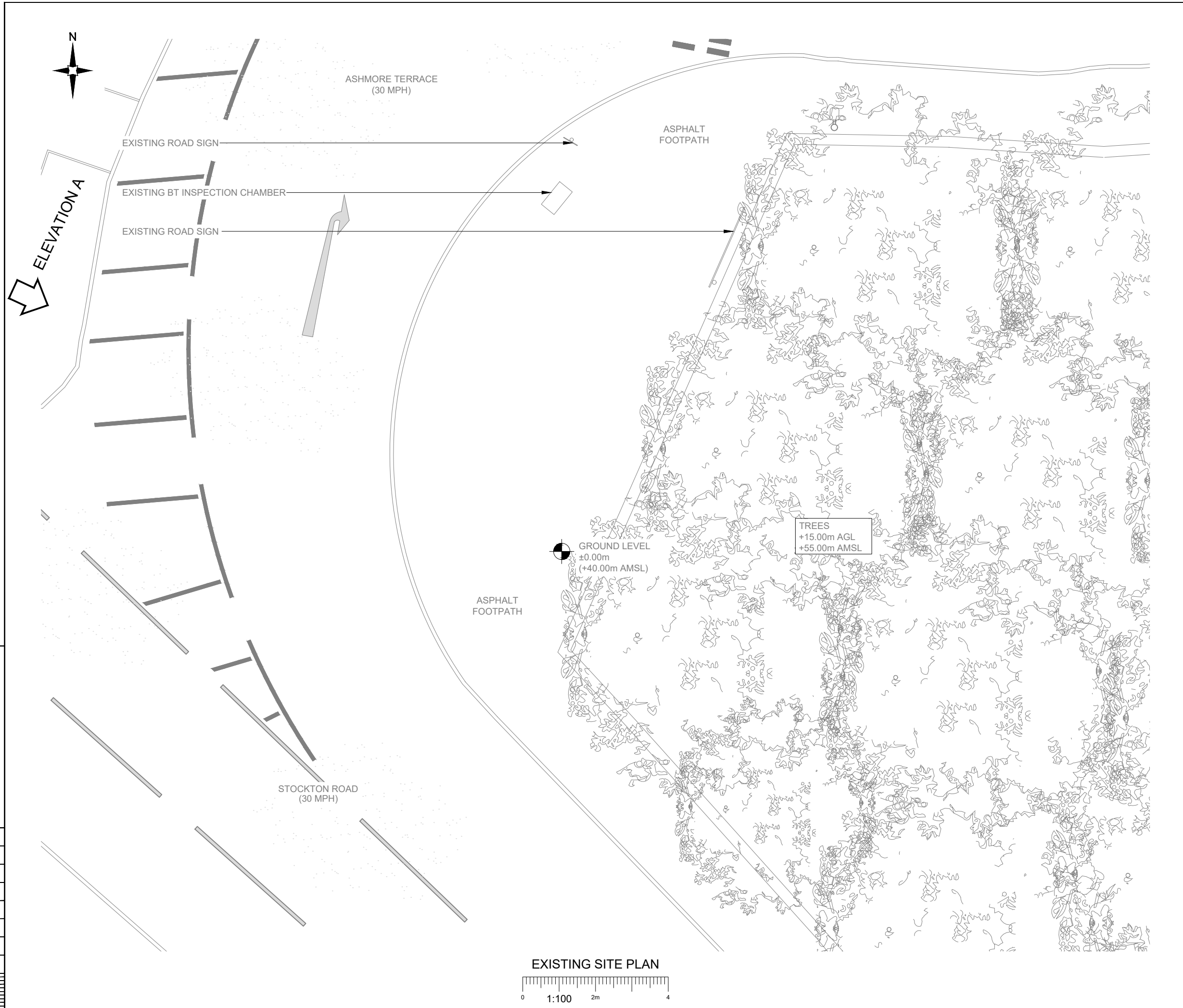
Purpose of Issue: PLANNING

Site ID:
 -

Drawing No: SDL14733_PLANNING_REV_B

Issue: B

100mm
50mm
10mm



NOTES:

- ALL DIMENSIONS IN MM UNLESS OTHERWISE NOTED.

| B | Changed pole height from 20m to 15m | CZ | RWB | 02.03.21 |
|-----|-------------------------------------|----|-----|----------|
| A | Issued for Planning | MF | RWB | 20.01.21 |
| REV | MODIFICATION | BY | CH | DATE |
| | | | | |



Hutchison 3G UK Limited
 Star House, 20 Grenfell Road
 Maidenhead, SL6 1EH
 Tel: 01628 765 000
 Fax: 01628 765 001

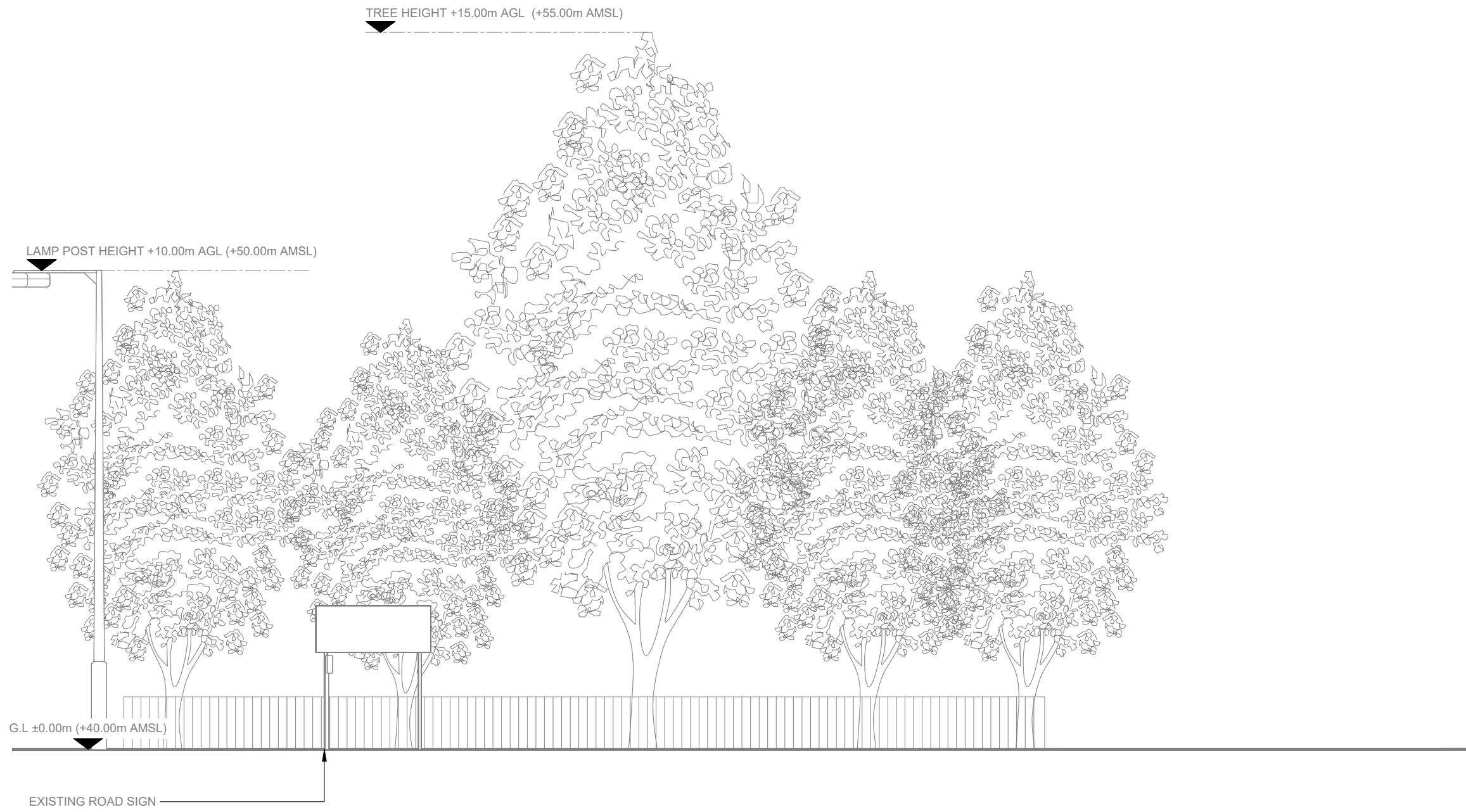
 H3G Base Station Information line:
 0845 6043000
 Available 8am-8pm Monday to Friday

Design Consultant & Principal Contractor:



Great British Communications
 Lapping House, Block 3 Forward Point,
 Ton House Lane, Widnes, Cheshire, WAB 0SL
 t. 44 (0)151 420 4128
www.gbcservices.co.uk

| | |
|-------------------|---|
| Site Name: | STOCKTON ROAD |
| 3UK Cell ID: | SDL14733 |
| Address: | STOCKTON ROAD SUNDERLAND TYNE AND WEAR SR2 7DE |
| Title: | 100 EXISTING SITE PLAN |
| Project: | H3G UNILATERAL SW |
| Purpose of Issue: | PLANNING |
| Site ID: | - |
| Drawing No: | SDL14733_PLANNING_REV_B |
| Issue: | B |



NOTES:

1. ALL DIMENSIONS IN MM UNLESS OTHERWISE NOTED.

| REV | MODIFICATION | BY | CH | DATE |
|-----|-------------------------------------|----|-----|----------|
| B | Changed pole height from 20m to 15m | CZ | RWB | 02.03.21 |
| A | Issued for Planning | MF | RWB | 20.01.21 |



Hutchison 3G UK Limited
 Star House, 20 Grenfell Road
 Maidenhead, SL6 1EH
 Tel: 01628 765 000
 Fax: 01628 765 001

H3G Base Station Information line:
 0845 6043000
 Available 8am-8pm Monday to Friday

Design Consultant & Principal Contractor:



Great British Communications
 Lapwing House, Block 3 Forward Point,
 Ton House Lane, Widnes, Cheshire, WAB 0SL
 t. 44 (0)151 420 4128
www.gbcservices.co.uk

Site Name: **STOCKTON ROAD**

3UK Cell ID: **SDL14733**

Address:
**STOCKTON ROAD
 SUNDERLAND
 TYNE AND WEAR
 SR2 7DE**

Title: **150 EXISTING SITE ELEVATION**

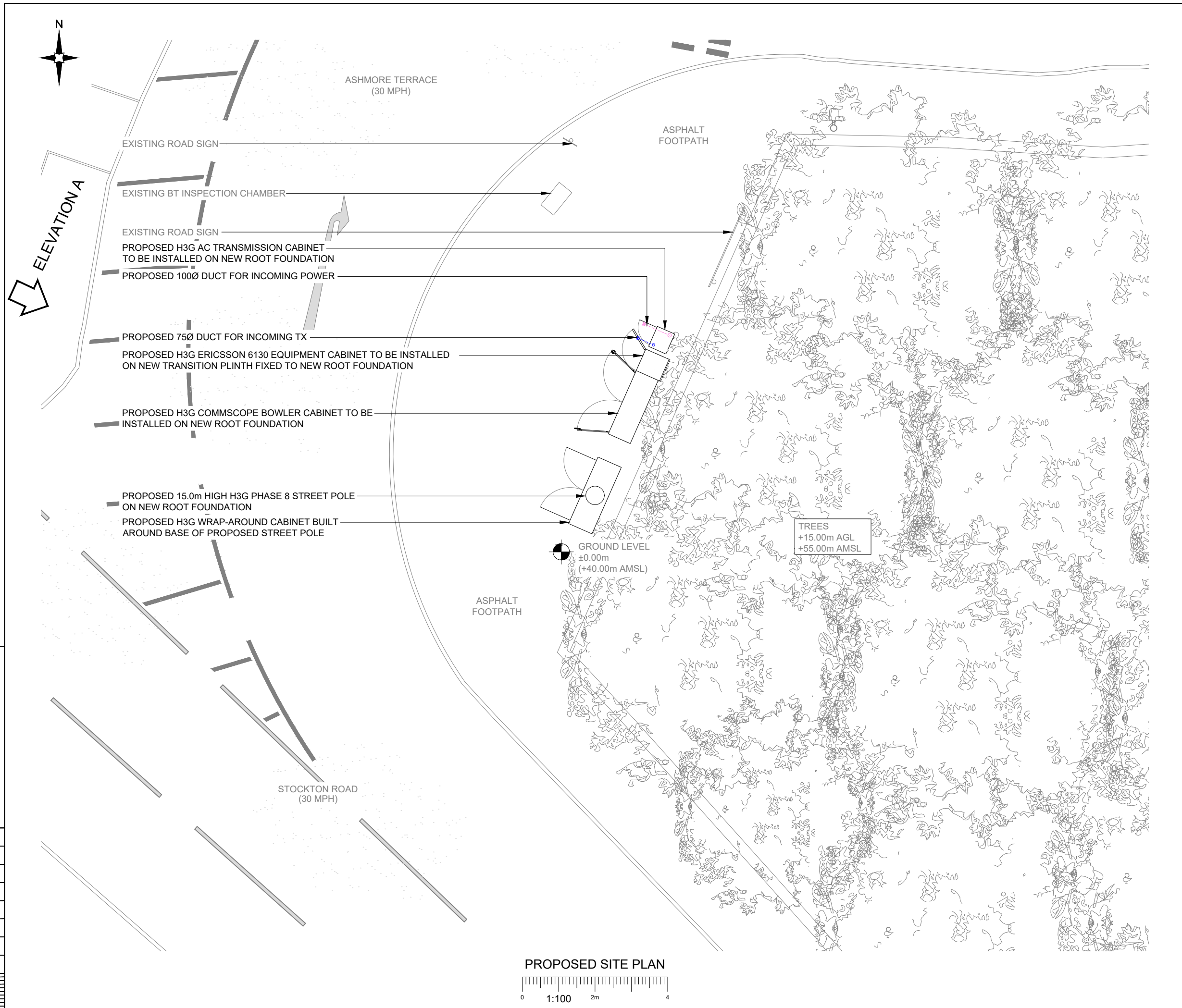
Project: **H3G UNILATERAL SW**

Purpose of Issue: **PLANNING**

Site ID:
 -

Drawing No: **SDL14733_PLANNING_REV_B** Issue: **B**

100mm
50mm
10mm



PROPOSED SITE PLAN
 0 1:100 2m 4

NOTES:
 1. ALL DIMENSIONS IN MM UNLESS OTHERWISE NOTED.

| REV | MODIFICATION | BY | CH | DATE |
|-----|-------------------------------------|----|-----|----------|
| B | Changed pole height from 20m to 15m | CZ | RWB | 02.03.21 |
| A | Issued for Planning | MF | RWB | 20.01.21 |



Hutchison 3G UK Limited
 Star House, 20 Grenfell Road
 Maidenhead, SL6 1EH
 Tel: 01628 765 000
 Fax: 01628 765 001

H3G Base Station Information line:
 0845 6043000
 Available 8am-8pm Monday to Friday

Design Consultant & Principal Contractor:

Great British Communications
 Lapping House, Block 3 Forward Point,
 Ton House Lane, Widnes, Cheshire, WAB 0SL
 t. 44 (0)151 420 4128
 www.gbcservices.co.uk

Site Name: **STOCKTON ROAD**

3UK Cell ID: **SDL14733**

Address:
**STOCKTON ROAD
 SUNDERLAND
 TYNE AND WEAR
 SR2 7DE**

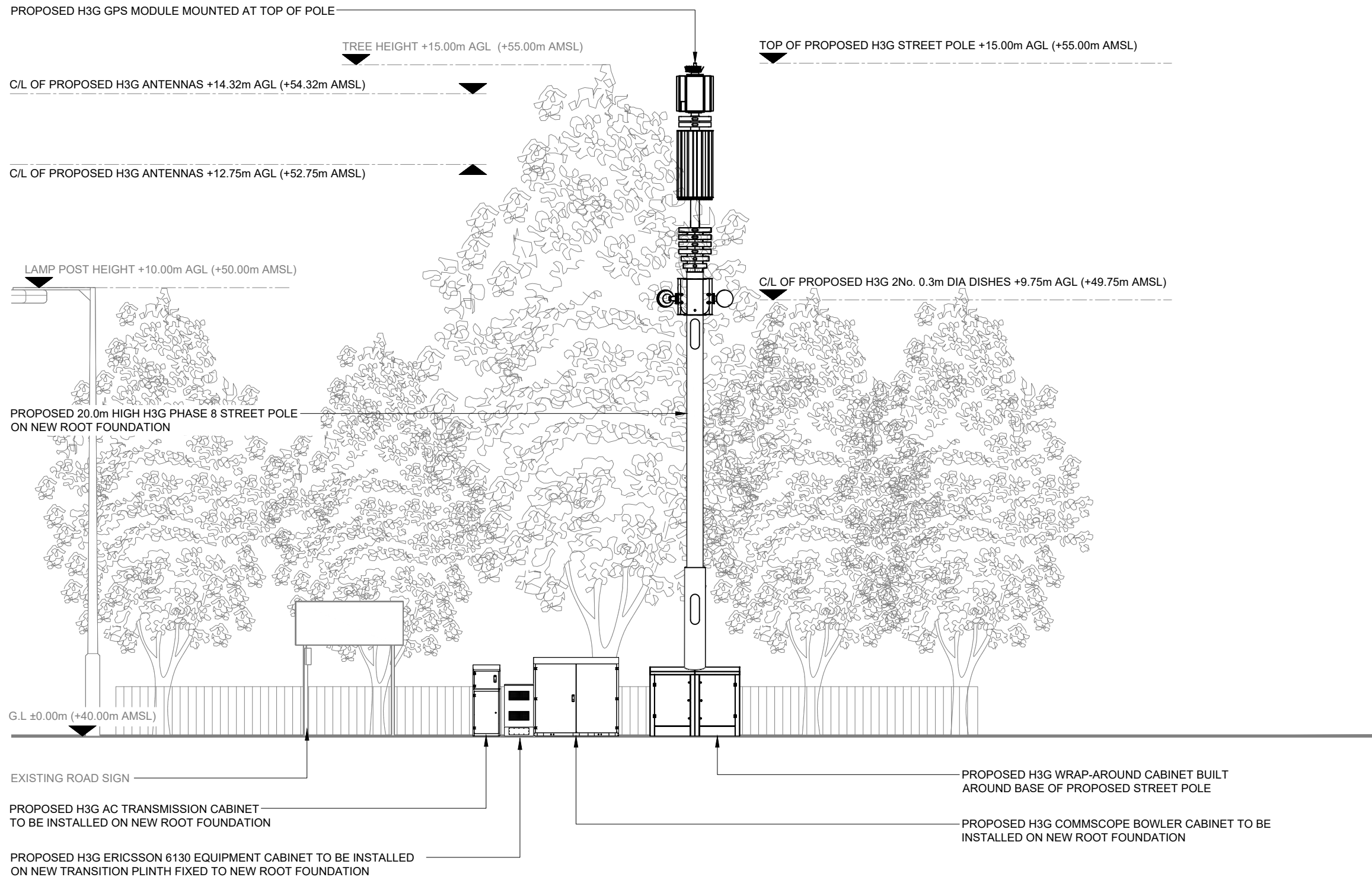
Title: **215 PROPOSED SITE PLAN**

Project: **H3G UNILATERAL SW**

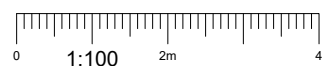
Purpose of Issue: **PLANNING**

Site ID:
 -

Drawing No: **SDL14733_PLANNING_REV_B** Issue: **B**



PROPOSED SITE ELEVATION A



NOTES:
1. ALL DIMENSIONS IN MM UNLESS OTHERWISE NOTED.

| REV | MODIFICATION | BY | CH | DATE |
|-----|-------------------------------------|----|-----|----------|
| B | Changed pole height from 20m to 15m | CZ | RWB | 02.03.21 |
| A | Issued for Planning | MF | RWB | 20.01.21 |



Hutchison 3G UK Limited
 Star House, 20 Grenfell Road
 Maidenhead, SL6 1EH
 Tel: 01628 765 000
 Fax: 01628 765 001

H3G Base Station Information line:
 0845 6043000
 Available 8am-8pm Monday to Friday

Design Consultant & Principal Contractor:



Great British Communications
 Lapwing House, Block 3 Forward Point,
 Ton House Lane, Widnes, Cheshire, WAB 0SL
 t. 44 (0)151 420 4128
 www.gbcservices.co.uk

Site Name: **STOCKTON ROAD**

3UK Cell ID: **SDL14733**

Address:
**STOCKTON ROAD
 SUNDERLAND
 TYNE AND WEAR
 SR2 7DE**

Title: **265 PROPOSED SITE ELEVATION**

Project: **H3G UNILATERAL SW**

Purpose of Issue: **PLANNING**

Site ID:
 -

Drawing No: **SDL14733_PLANNING_REV_B** Issue: **B**

100mm
150mm
10mm

PROPOSED ANTENNA & RF EQUIPMENT SCHEDULE

| EXISTING/PROPOSED | ANTENNA REFERENCE | FUNCTION | FEEDER/FIBRE | | | | | | | | BIAS T's/RRU's | | ANTENNAS | | | | | | | |
|----------------------|-------------------|------------|---|------------|-------|----------------------|-------------|-----------|--------------|--------|----------------|--------|--|-----------|--------------------------------|-------|-------------------|-------------------|-------------------|---|
| | | | LENGTH(m) & DIAMETER (SEE GUIDANCE NOTES BELOW) | | | TYPE (COAX OR FIBRE) | FEEDERS QTY | FIBRE QTY | FIBRE LENGTH | FILTER | DIPLEXER | BIAS T | RRU QTY (HL= HIGH LEVEL, E= ENCLOSURE) | ANT. REF. | ANTENNA MANUFACTURERS PART No. | BRG° | HEIGHT TO TOP (m) | HEIGHT TO C/L (m) | HEIGHT TO U/S (m) | LOCATION (POLE MOUNTED, HEADFRAME, WITHIN SHROUD ETC) |
| | | | MF1 | MF(J1) | TOTAL | | | | | | | | | | | | | | | |
| SECTOR 1 PROPOSED | A1 | 5G | - | - | - | DC FIBRE | - | 3 | 19m | - | - | - | - | A1a | AIR 6488 | 120° | 14.72 | 14.32 | 13.92 | UPPER HEADFRAME |
| | A2 | 800 | 1/2"=12 | 1/2"=7m(2) | 19m | DC FIBRE+COAX | 4 | - | - | - | - | E | HUAWEI AHP4517R12v06 | 120° | 13.50 | 12.75 | 12.00 | LOWER HEADFRAME | | |
| | | 1400 | 1/2"=12 | 1/2"=7m(2) | 19m | DC FIBRE+COAX | 4 | - | - | 1 | - | E | | | | | | | | |
| | | 1800 /2100 | 1/2"=12 | 1/2"=7m(2) | 19m | DC FIBRE+COAX | 4 | - | - | - | 1 | - | | | | | | | E | |
| | | - | - | - | - | - | - | - | - | - | - | - | | | | | | | E | |
| | | - | - | - | - | - | - | - | - | - | - | - | | | | | | | E | |
| | | - | - | - | - | - | - | - | - | - | - | - | | | | | | | E | |
| SECTOR 2 PROPOSED | B1 | 5G | - | - | - | DC FIBRE | - | 3 | 19m | - | - | - | - | B1a | AIR 6488 | 240° | 14.72 | 14.32 | 13.92 | UPPER HEADFRAME |
| | B2 | 800 | 1/2"=12 | 1/2"=7m(2) | 19m | DC FIBRE+COAX | 4 | - | - | - | - | E | HUAWEI AHP4517R12v06 | 240° | 13.50 | 12.75 | 12.00 | LOWER HEADFRAME | | |
| | | 1400 | 1/2"=12 | 1/2"=7m(2) | 19m | DC FIBRE+COAX | 4 | - | - | 1 | - | E | | | | | | | | |
| | | 1800 /2100 | 1/2"=12 | 1/2"=7m(2) | 19m | DC FIBRE+COAX | 4 | - | - | - | 1 | - | | | | | | | E | |
| | | - | - | - | - | - | - | - | - | - | - | - | | | | | | | E | |
| | | - | - | - | - | - | - | - | - | - | - | - | | | | | | | E | |
| | | - | - | - | - | - | - | - | - | - | - | - | | | | | | | E | |
| SECTOR 3 PROPOSED | C1 | 5G | - | - | - | DC FIBRE | - | 3 | 19m | - | - | - | - | C1a | AIR 6488 | 0° | 14.72 | 14.32 | 13.92 | UPPER HEADFRAME |
| | C2 | 800 | 1/2"=12 | 1/2"=7m(2) | 19m | DC FIBRE+COAX | 4 | - | - | - | - | E | HUAWEI AHP4517R12v06 | 0° | 13.50 | 12.75 | 12.00 | LOWER HEADFRAME | | |
| | | 1400 | 1/2"=12 | 1/2"=7m(2) | 19m | DC FIBRE+COAX | 4 | - | - | 1 | - | E | | | | | | | | |
| | | 1800 /2100 | 1/2"=12 | 1/2"=7m(2) | 19m | DC FIBRE+COAX | 4 | - | - | - | 1 | - | | | | | | | E | |
| | | - | - | - | - | - | - | - | - | - | - | - | | | | | | | E | |
| | | - | - | - | - | - | - | - | - | - | - | - | | | | | | | E | |
| | | - | - | - | - | - | - | - | - | - | - | - | | | | | | | E | |

TRANSMISSION DISH SCHEDULE

| Dish ID | Status | Size Ø (mm) | Colour (RAL Colour) | Height (C/L) AGL | Bearing (°) EGN | B End Cell ID | Link Ref: | Comments |
|---------|----------|-------------|---------------------|------------------|-----------------|---------------|-----------|---|
| TD1 | PROPOSED | 300mm | BLACK-9005 | 9.75m | TBC° | - | - | Transmission Solution TBC - 2No 300mm Dishes shown for planning |
| TD2 | PROPOSED | 300mm | BLACK-9005 | 9.75m | TBC° | - | - | Transmission Solution TBC - 2No 300mm Dishes shown for planning |

GPS LINE KEY

| SECTOR ID | NODE TYPE | NODE C/L (m) AGL | GPS NODE CABLE LENGTH (m) |
|-----------|-----------|------------------|---------------------------|
| 1 | GPS | 15.00m | 35m |

| REV | MODIFICATION | BY | CH | DATE |
|-----|-------------------------------------|----|-----|----------|
| B | Changed pole height from 20m to 15m | CZ | RWB | 02.03.21 |
| A | Issued for Planning | MF | RWB | 20.01.21 |



Hutchison 3G UK Limited
 Star House, 20 Grenfell Road
 Maidenhead, SL6 1EH
 Tel: 01628 765 000
 Fax: 01628 765 001

 H3G Base Station Information line:
 0845 6043000
 Available 8am-8pm Monday to Friday

Design Consultant & Principal Contractor:

Great British Communications
 Lapwing House, Block 3 Forward Point,
 Ton House Lane, Widnes, Cheshire, WAB 0SL
 t. 44 (0)151 420 4128
 www.gbcservices.co.uk

| | |
|-------------------|---|
| Site Name: | STOCKTON ROAD |
| 3UK Cell ID: | SDL14733 |
| Address: | STOCKTON ROAD SUNDERLAND TYNE AND WEAR SR2 7DE |
| Title: | 304 PROPOSED CONFIGURATION ANTENNA SCHEDULE |
| Project: | H3G UNILATERAL SW |
| Purpose of Issue: | PLANNING |
| Site ID: | - |
| Drawing No: | SDL14733_PLANNING_REV_B |
| Issue: | B |

100mm
50mm
10mm

Support Structure Schedule

| Structure ID | Status | Equipment Description / Type | Structure Manufacturer | Height AGL (m) | Colour (RAL Colour) | Headframe Details | Foundation / Support Grillage / Host Structure Details | Support Bolt Details | MBNL Ref: | Comments |
|--------------|----------|------------------------------|------------------------|----------------|---------------------|-------------------|--|----------------------|-----------|-------------------------|
| ST1 | PROPOSED | PHASE 8 POLE | HEL | 15.00m | BLACK-9005 | - | ROOT | - | N/A | WITH WRAPAROUND CABINET |

Equipment Schedule

| Equipment ID | Quantity | Status | Equipment Description / Type | Equipment Manufacturer | Dimensions (W x D x H) | Weight (kg) | Colour (RAL Colour) | Material | Location | Power | Power cable length (m) | MBNL Ref: | Comments |
|--------------|----------|----------|------------------------------|------------------------|------------------------|-------------|---------------------|----------|----------|-------|------------------------|-----------|---------------------------------|
| CAB1 | 1 | PROPOSED | H3G - AC TRANSMISSION | COMMSCOPE | 600x500x1585 | 110 | BLACK-9005 | STEEL | OUTDOOR | - | - | - | FIBRE ONLY - TX SUPPLIER TBC |
| CAB2 | 1 | PROPOSED | H3G - 6130 | ERICSSON | 650x700x950 | 130 | BLACK-9005 | STEEL | OUTDOOR | - | - | - | COMPLETE WITH TRANSITION PLINTH |
| CAB3 | 1 | PROPOSED | H3G - BOWLER | COMMSCOPE | 1900x600x1752 | 220 | BLACK-9005 | STEEL | OUTDOOR | - | - | - | |

| DEPENDENCY | STATUS |
|-------------------------------|--|
| RF Compliance | Sector A - Step 1.0 SW Sector B - Step 3.0 SW Sector C - Step 2.0 SW |
| Building Regulations Approval | N/A |
| Asbestos | N/A |
| Planning Conditions | TBC by Local Authority |
| Geotech Report | N/A |
| Structural Calculations | N/A |
| Intrusive Building Survey | N/A |
| Global Design Check | N/A |
| Rigging Survey | N/A |
| FIXITS | N/A |
| Power | Proposed 1 phase 100A supply - DNO Quote Approval Required |
| Transmission Solution | TBC: Microwave only/Fibre only/Microwave+Fibre 2No 0.3m DIA dishes shown for planning |
| Cooling Solution | Manufacturers Cooling |
| Line of Site Survey | TBC - Dependant on Transmission Solution |
| Services Search | Completed - 13.01.21 |
| Trial Hole Report | Completed - 14.01.21 Clear |
| Other | - |

| REV | MODIFICATION | BY | CH | DATE |
|-----|-------------------------------------|----|-----|----------|
| B | Changed pole height from 20m to 15m | CZ | RWB | 02.03.21 |
| A | Issued for Planning | MF | RWB | 20.01.21 |



Hutchison 3G UK Limited
 Star House, 20 Grenfell Road
 Maidenhead, SL6 1EH
 Tel: 01628 765 000
 Fax: 01628 765 001

 H3G Base Station Information line:
 0845 6043000
 Available 8am-8pm Monday to Friday

Design Consultant & Principal Contractor:



Great British Communications
 Lapping House, Block 3 Forward Point,
 Ton House Lane, Widnes, Cheshire, WAB 0SL
 t. 44 (0)151 420 4128
 www.gbcservices.co.uk

Site Name: **STOCKTON ROAD**

3UK Cell ID: **SDL14733**

Address:
**STOCKTON ROAD
 SUNDERLAND
 TYNE AND WEAR
 SR2 7DE**

Title: **307 EQUIPMENT SCHEDULES & DEPENDENCIES**

Project: **H3G UNILATERAL SW**

Purpose of Issue: **PLANNING**

Site ID:
 -

Drawing No: **SDL14733_PLANNING_REV_B** Issue: **B**

100mm
50mm
10mm