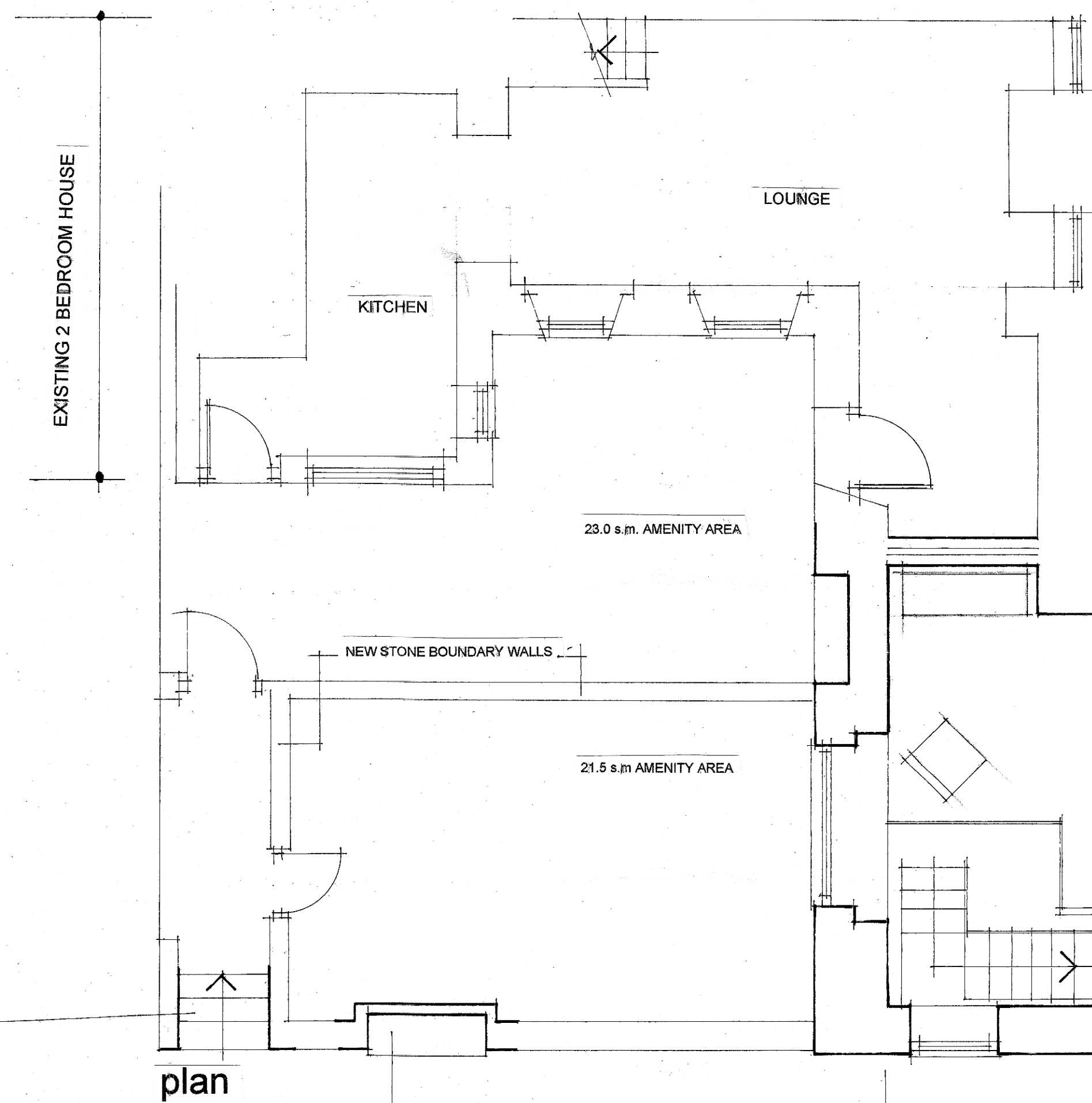




front elevation



south west facing end elevation



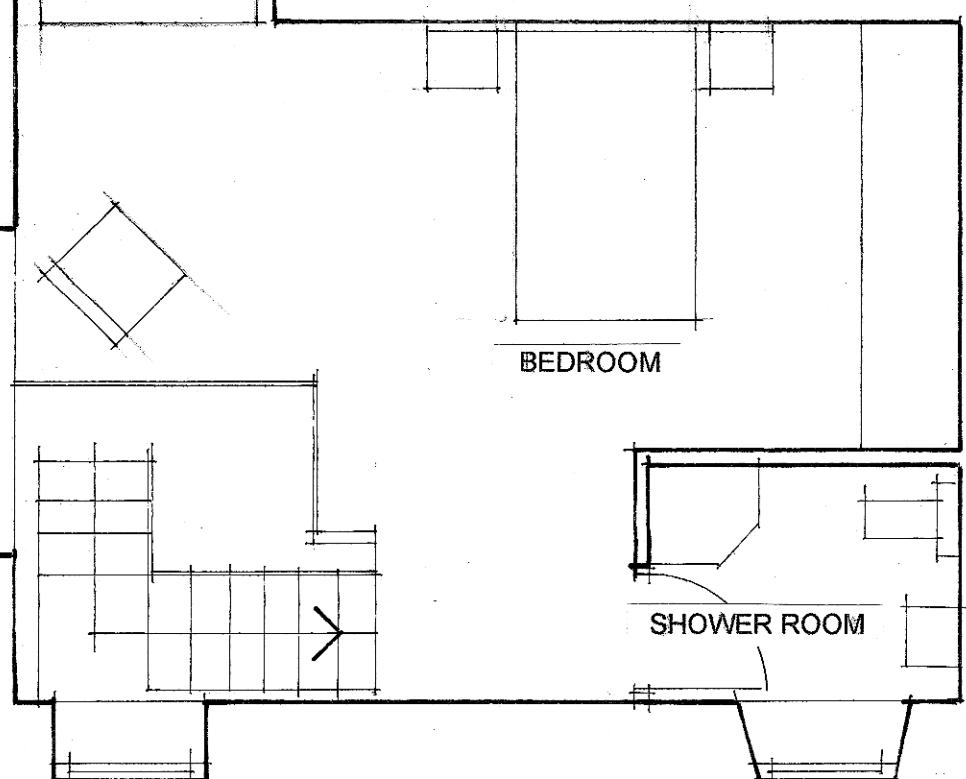
plan

BREAK THROUGH EXISTING WALL AND INSERT NEW STONE STEPS

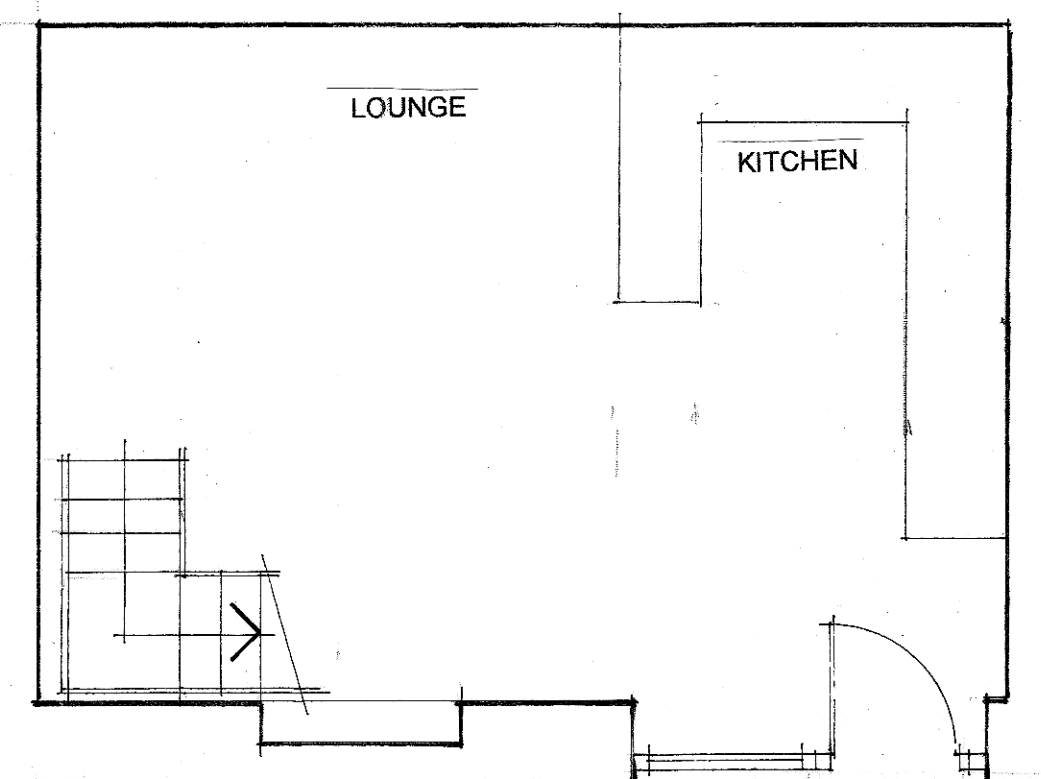
REMOVE EXISTING STONE STEPS  
CONSTRUCT STONE ENCLOSURE WALL BEHIND  
FIT STONE PAVINGS TO RECESS FLOOR TO FORM BIN STORE AREA  
FOR 1 BED FLAT

policy H9 - MINIMUM SPACE STANDARDS

	No. of same type in scheme	How many floors	No. of double bedrooms	No. of single bedrooms	Total persons	Total bedrooms	Dwelling floor area (GIA)	Built in storage (sqm)	Ceiling height < 2.3m	Bedroom 1 single / double	Bedroom 1 floor area	Bedroom 1 width	Bedroom 2 single / double	Bedroom 2 floor area	Bedroom 2 width	Policy compliant
2 BEDROOM HOUSE	1	3	2	1	4	2	81	3.6	2.1	12	3	3	12	3		Y
1 BEDROOM FLAT	1	2	1	0	2	1	58.1	2.5	2.1	10	4	1	1	1		Y

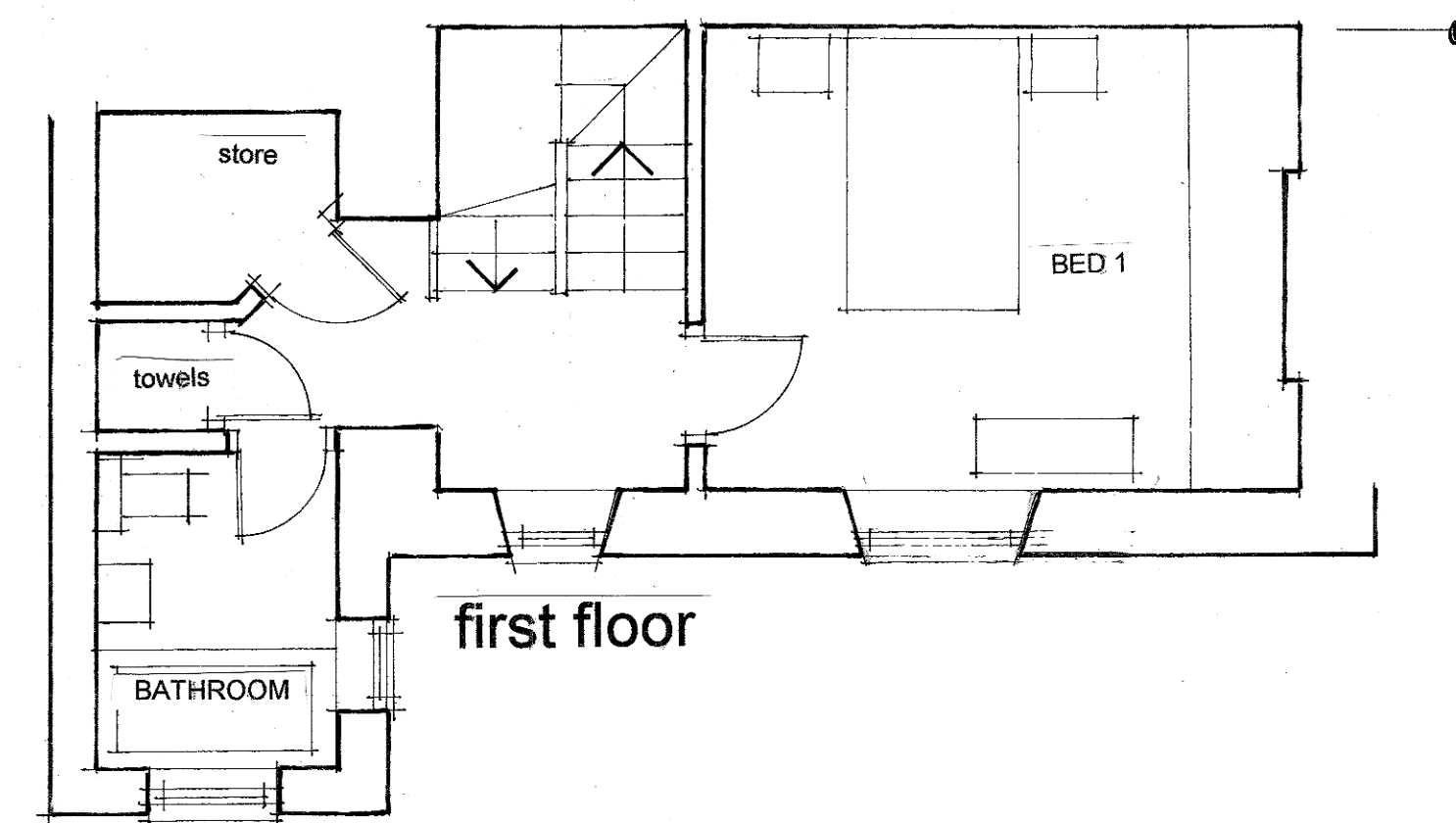


upper level

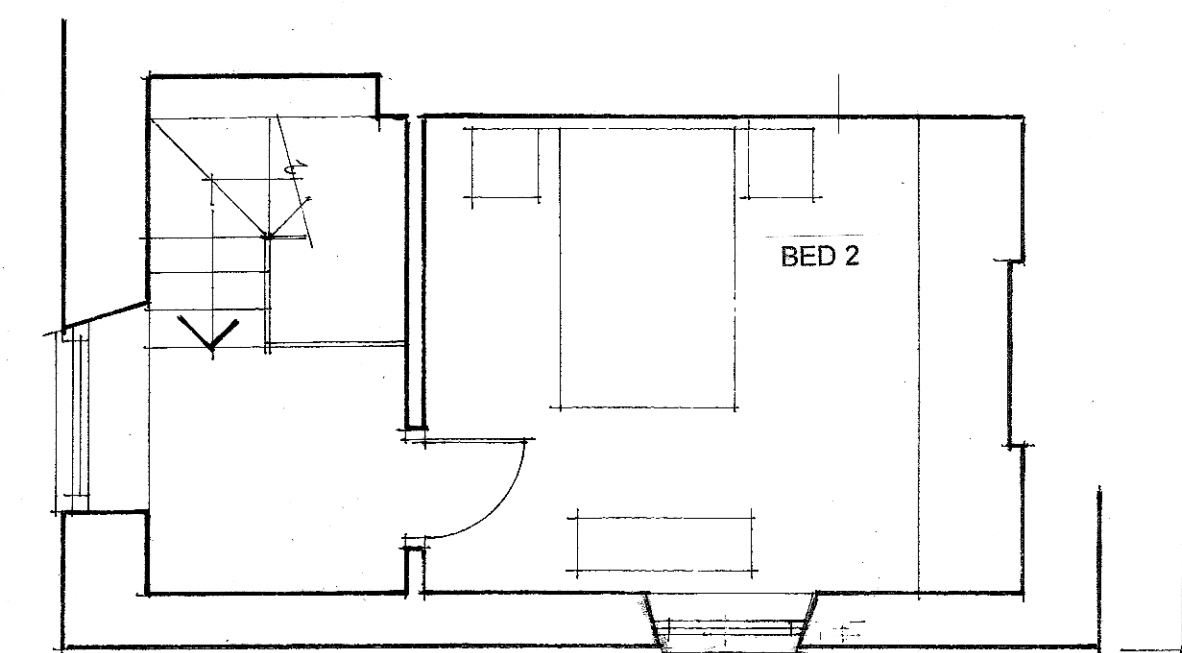


lower level

1 BEDROOM FLAT



first floor



second floor