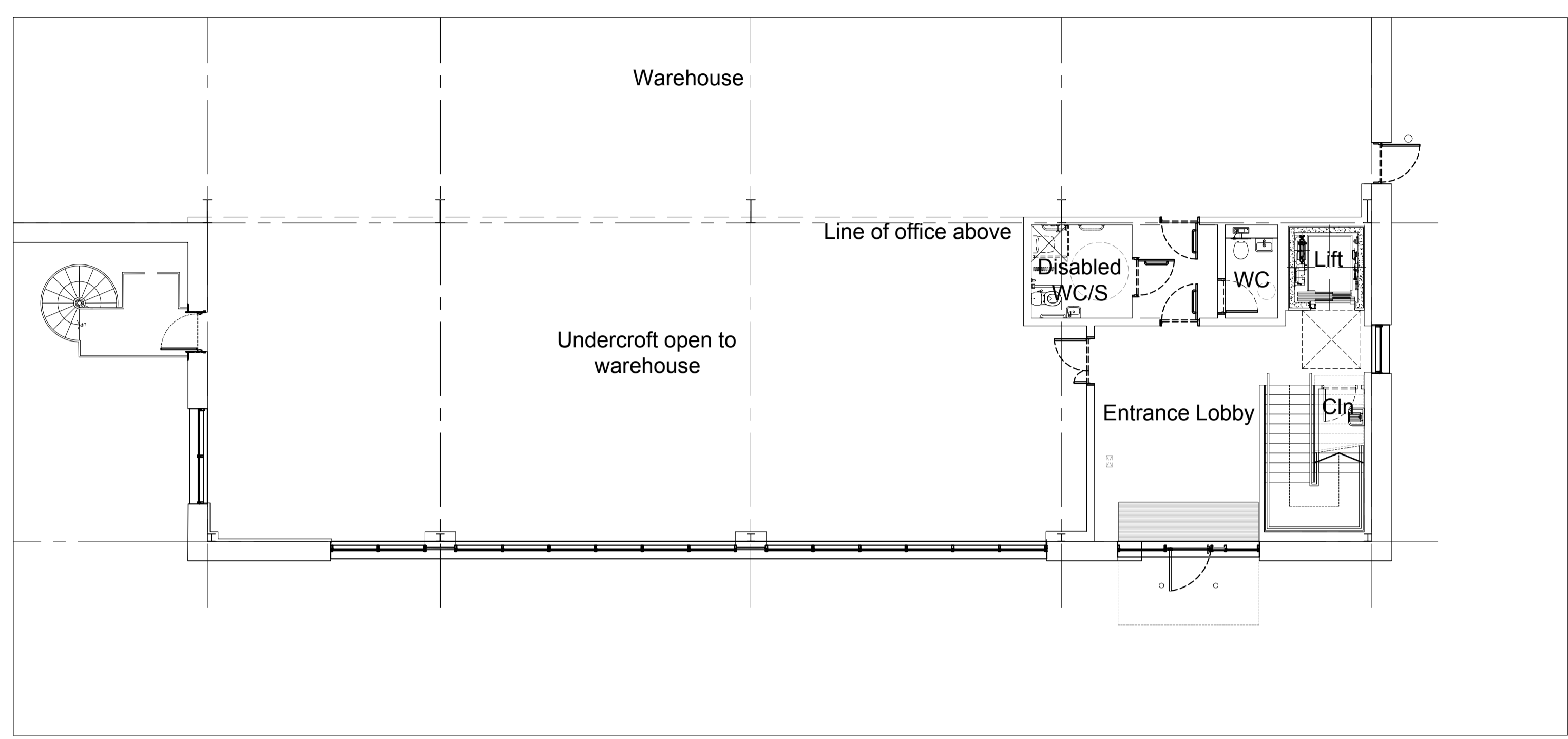


Disclaimer:
Subject to survey.

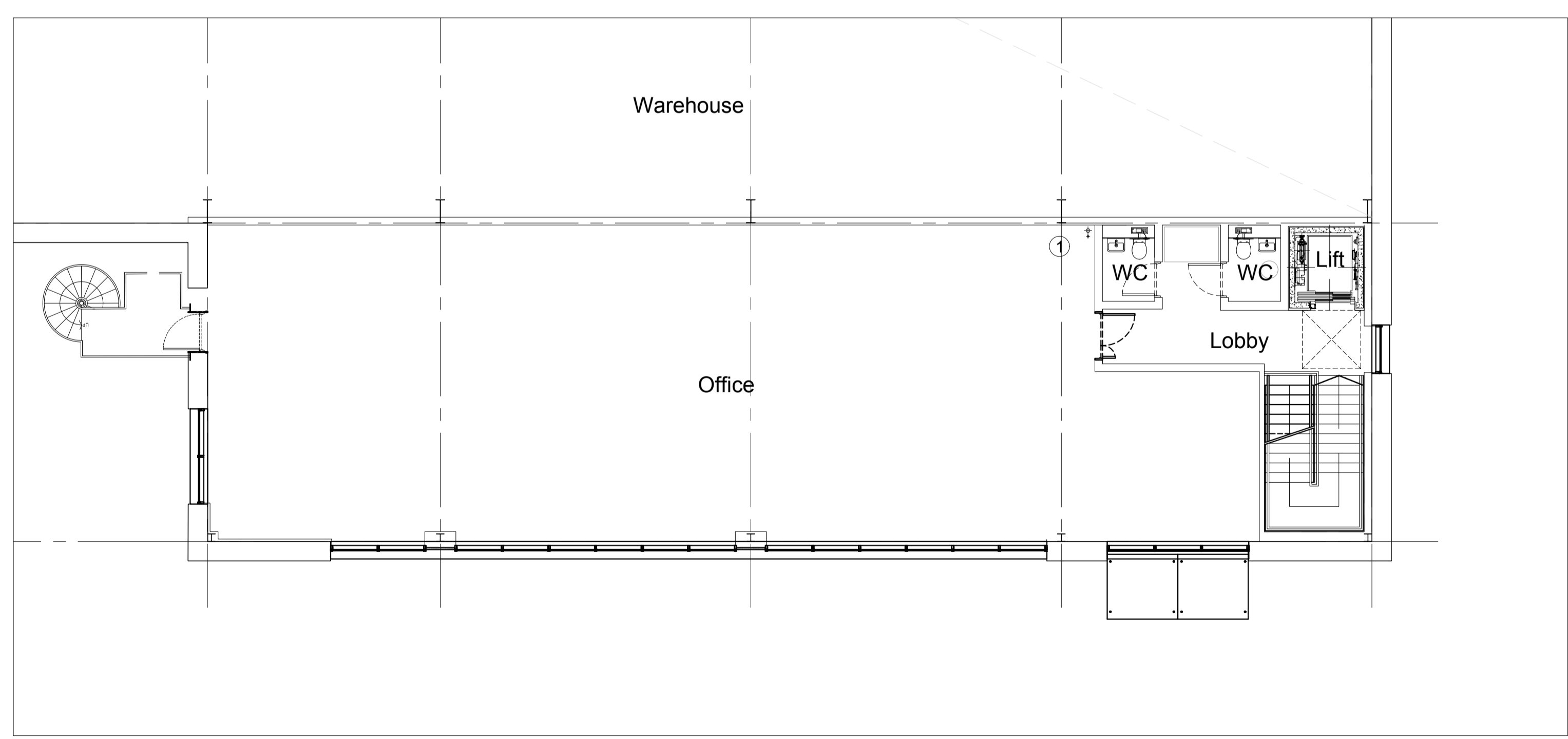
Notes:

KEY
① Water Supply & Drainage (capped off)

| AREA SCHEDULE(GIA) | |
|-------------------------------------|-----------------------|
| UNIT 1 (GIA) | 39,500ft ² |
| Warehouse (incl. office Undercroft) | 36,900ft ² |
| Office (FF Only) | 2,600ft ² |
| Car parking spaces | 53 |



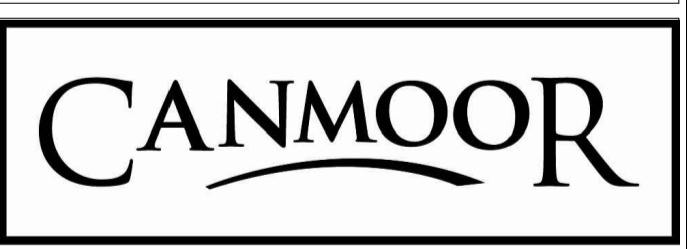
01 Unit 1 Ground Floor GA Plan
1:100 @ A1



02 Unit 1 First Floor GA Plan
1:100 @ A1

| | | | |
|-------------------|----------|----|----|
| - Planning Issue | 11.02.21 | HT | HA |
| A Core Amendments | 11.02.21 | HT | HA |
| - Draft Issue | 22.01.21 | HT | HA |

Rev: Notes: Date: Dwn: Iss:
Suitability Code:
0 1 2 3 4 5
Scale bar - 1:100m



hale
ARCHITECTURE
22c Leathermarket Street, London, SE1 3HP

Project:
Grimshaw Lane, Manchester

Drawing Title:
Main Entrance & FF Office Plan
Unit 1

| | | |
|----------------------|----------------------------------|----------------|
| Project No: 20066 | Scale @ A1 @ A3 1:100 / 1:200 | Revision: A |
|----------------------|----------------------------------|----------------|

Drawing No:
PL1075