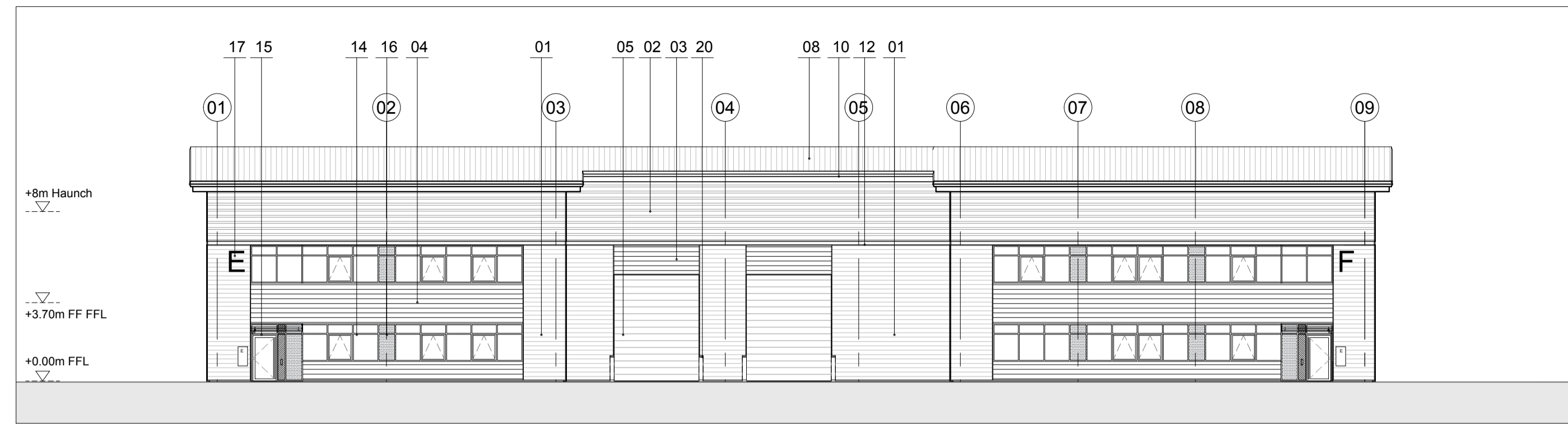


Disclaimer:  
Subject to survey.

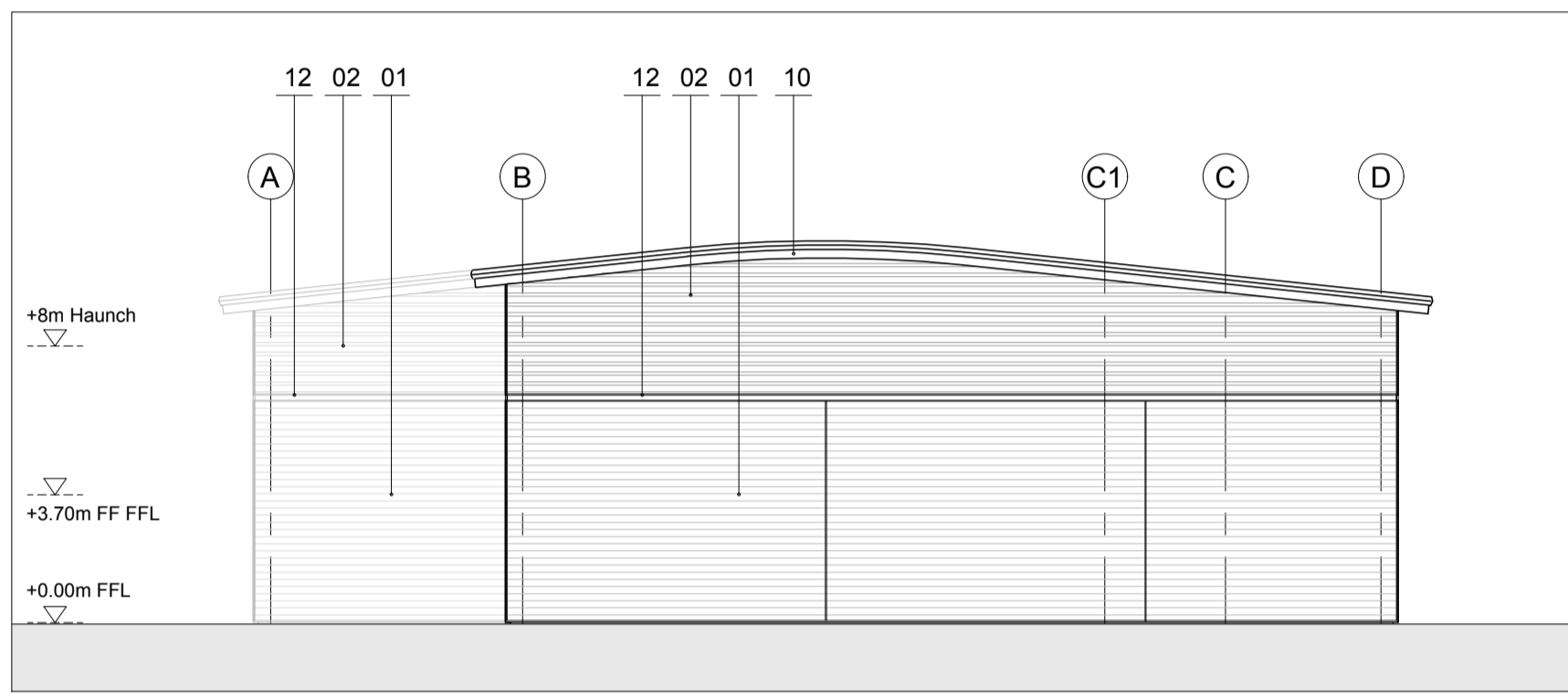
Notes:

**MATERIALS KEY:**

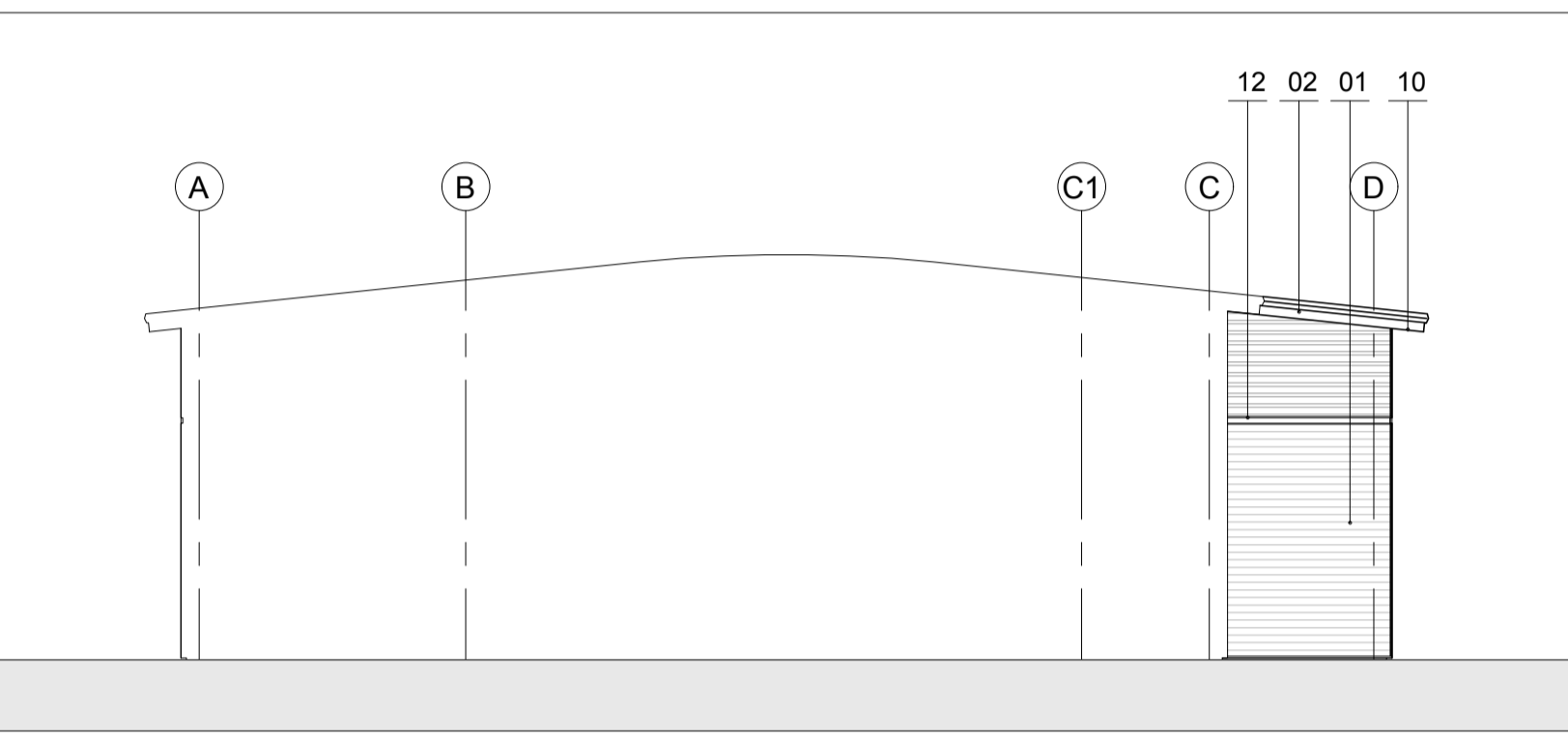
- 01 - Wall Cladding: Horizontal profiled built up steel cladding (MW5SC Wall Profile); finished Tata Steel Colourcoat Prisma, colour Sirius (RAL 9006)
- 02 - Wall Cladding: Horizontal profiled built up steel cladding (32/1000 R wall sheet); finished Tata Steel Colourcoat Prisma, colour Orion (RAL 9007)
- 03 - Wall Cladding Loading area: Horizontal profiled built up steel cladding (13.5/3 Sinusoidal Profile); finished Tata Steel Colourcoat Prisma, colour Zeus
- 04 - Wall Cladding Office Frontage: Horizontal profiled built up steel cladding (13.5/3 Sinusoidal Profile); finished Tata Steel Colourcoat Prisma, colour Zeus
- 05 - Level loading doors, Tata Steel Colourcoat HSP200, colour Anthracite (RAL 7016)
- 06 - Dock Leveller doors, Tata Steel Colourcoat HSP200, colour Anthracite (RAL 7016)
- 07 - Concrete Wall to dock Levellers - insulated precast concrete Prowall
- 08 - Roof Cladding Profile built up cladding (32/1000 Forward profile); finished Tata Steel Colourcoat HSP 200 Ultra, colour Goosegrey (BS10A05)
- 09 - Metal escape and personnel doors, colour to match adjacent cladding
- 10 - Eave gutter fascias / Verge board fascias to be colourcoat Prisma, Colour Zeus (RAL 7022)
- 11 - Soffits colourcoat Prisma, Colour Sirius (RAL 9006)
- 12 - Horizontal PPC Metal feature channel, Colourcoat prisma, Colour Zeus (RAL7022)
- 13 - Curtain Wall Windows, Satin finished PPC in Anthracite (RAL7016)
- 14 - Framed Window System, Satin finished PPC in Anthracite (RAL 7016)
- 15 - Still framed, glazed canopy, Satin finished PPC in Anthracite (RAL 7016) with Fritted laminated glazing
- 16 - Look-a-like Ceramic Fritted glazing panels (18B29)
- 17 - Unit and loading door number - 3mm Aluminium with black anodise finish.
- 18 - Bollards - 1100mm high, Black finished steel bollard with yellow reflective band to top
- 19 - Bollards - 1000mm high, Stainless steel finish bollard to entrance door
- 20 - Bollards - 1200mm concrete fill bollard to all level loading doors. Black finish with yellow reflective bands to tops
- 21 - Insulation
- 22 - Ground Floor slab DPM to Structural Engineer's design and specifications
- 23 - Steelwork to Structural Engineer's design
- 24 - Purlins to be fixed in accordance with manufacturer's recommendations
- 25 - Letter box plate to be brushed stainless steel. Provided to the adjacent aluminium panel to the main entrance doors
- 26 - Brushed Stainless Steel Pull handles.
- 27 - 0.7mm Steel Soffit Flashing, finish to be Prisma, colour to match cladding
- 28 - 19/1000 liner sheet. 0.4mm thick steel, finish High Reflect, colour Bright White
- 29 - PCC Panels anthracite
- 30 - 0.7mm Steel Drip flashing, finish to be Prisma, colour to match cladding



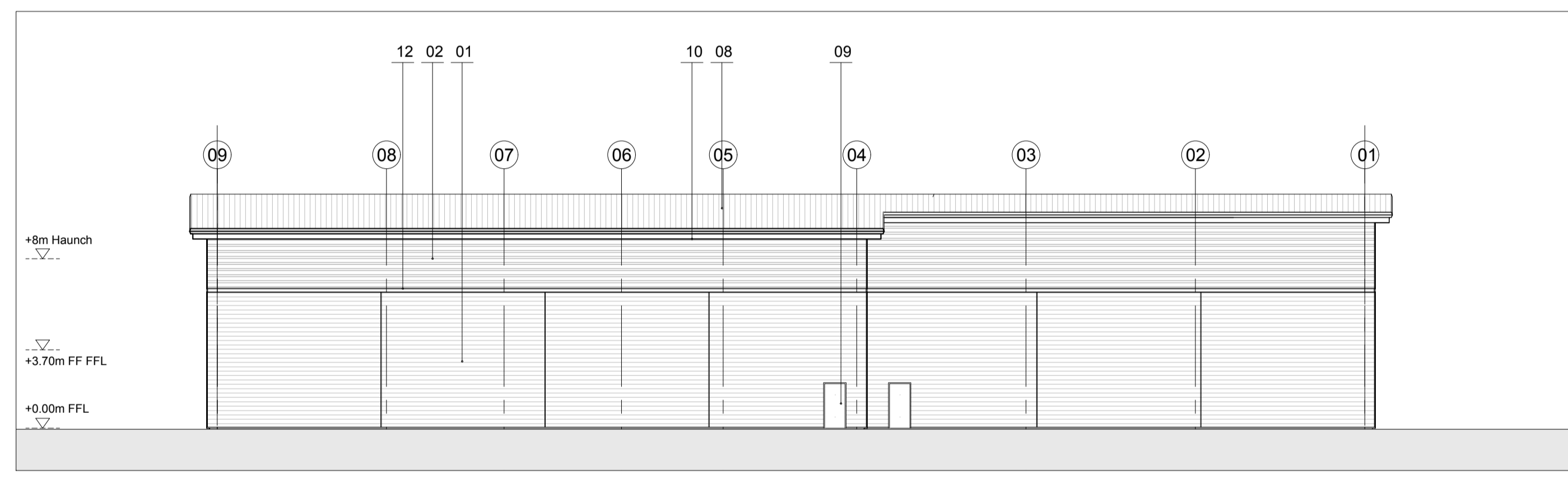
**01 North East Elevation**  
1:200 @ A1



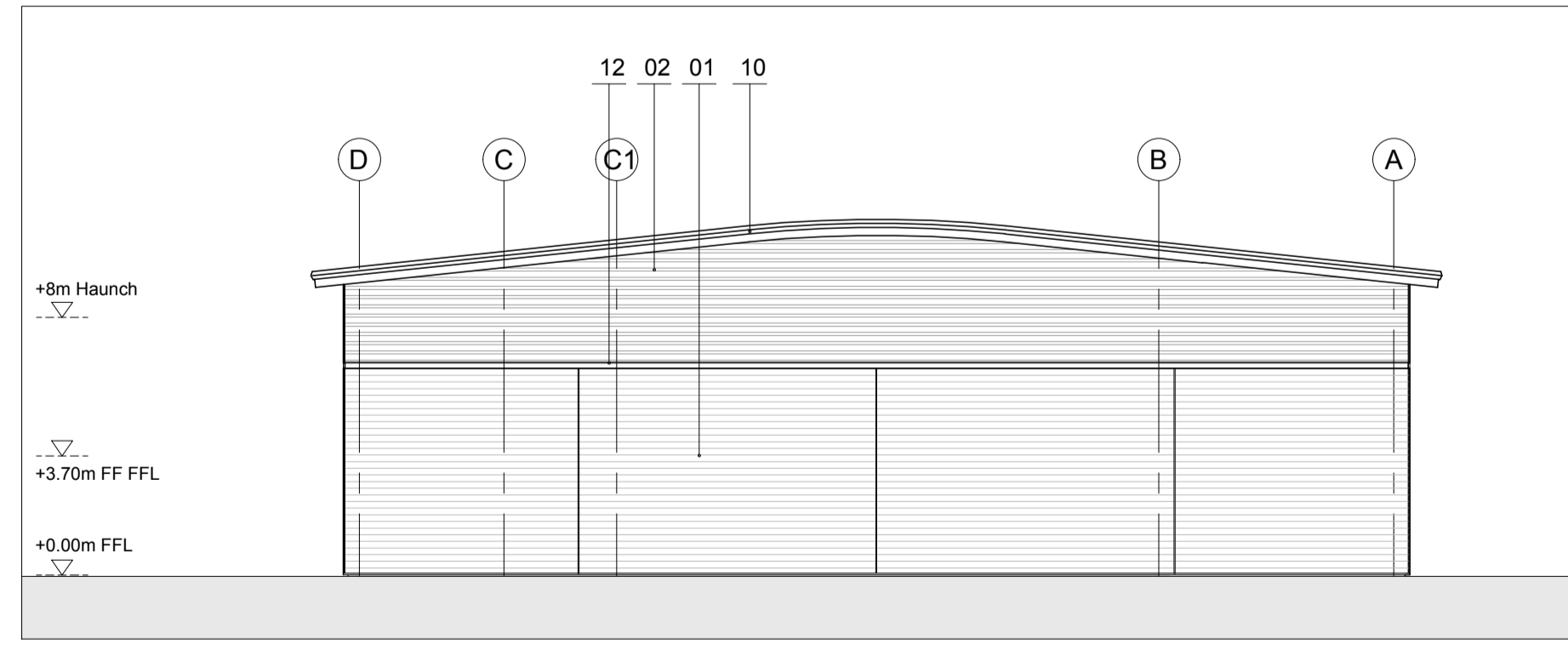
**02 South East Elevation**  
1:200 @ A1



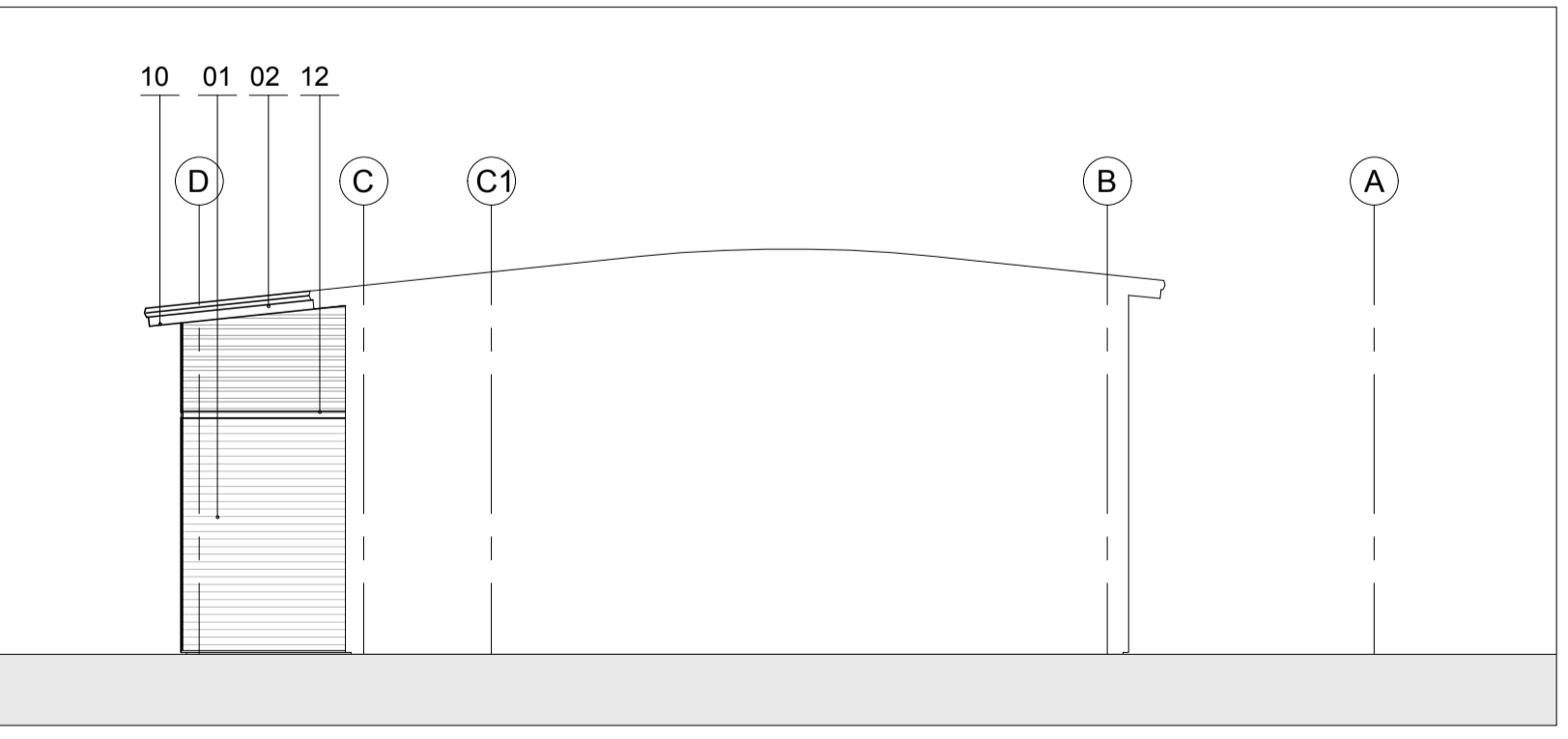
**04 South East Elevation - Loading Return**  
1:200 @ A1



**05 South West Elevation**  
1:200 @ A1



**06 North West Elevation**  
1:200 @ A1



**06 North West Elevation - Loading Return**  
1:200 @ A1

- Planning Issue	11.02.21	HT	HA
- First Issue	01.02.21	HT	HA
Rev: Notes:	Date:	Dwn:	Iss:
Suitability Code:			
0 2 4 6 8 10 Scale bar - 1:200m			



**hale**  
ARCHITECTURE  
22c Leathermarket Street, London, SE1 3HP

Project:  
Grimshaw Lane, Manchester

Drawing Title:  
Elevations  
Units E to F

Project No: 20066	Scale @ A1 @ A3 1:200 / 1:400	Revision: -
Drawing No: <b>PL1054</b>		