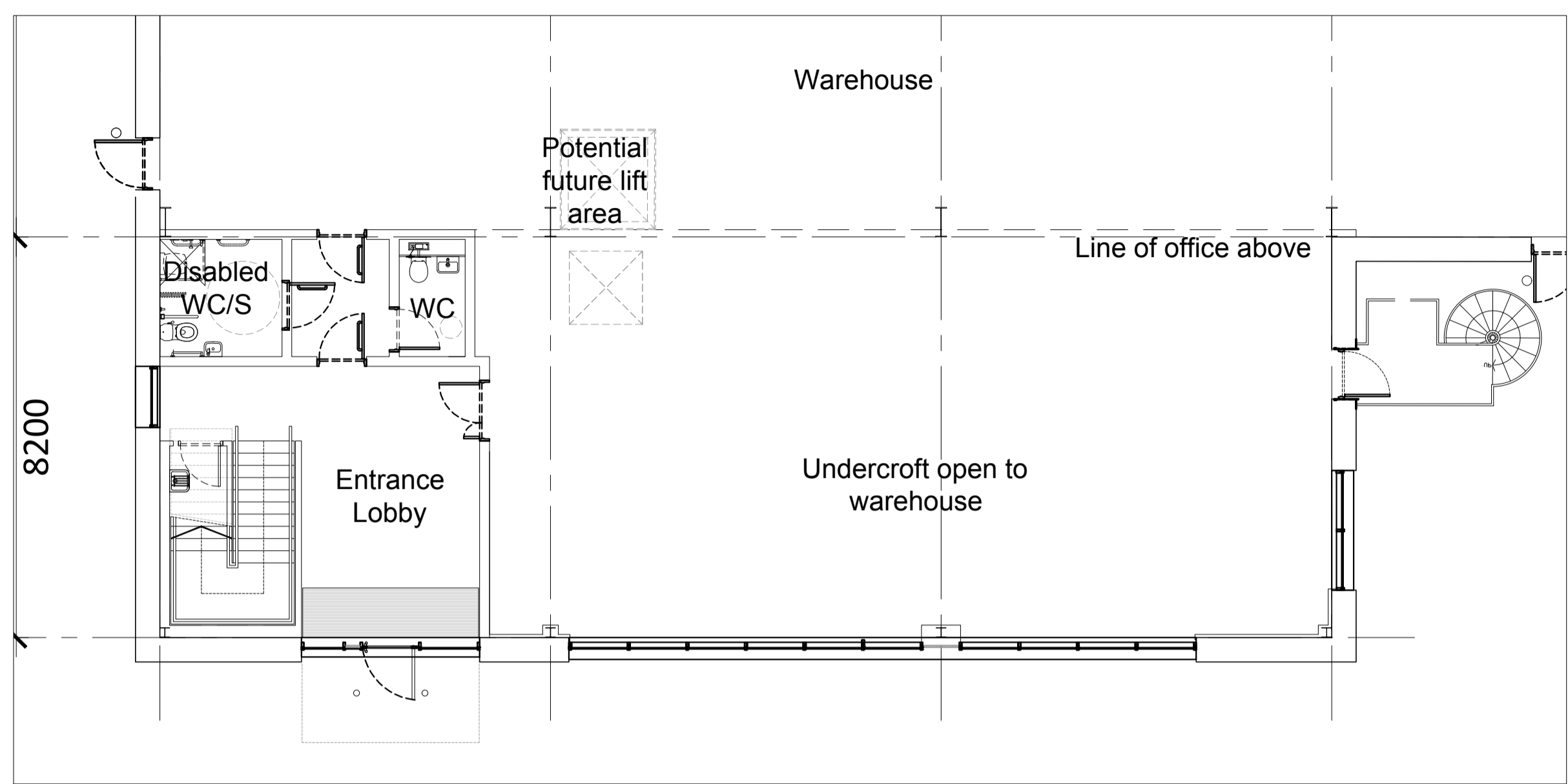


Disclaimer:
Subject to survey.

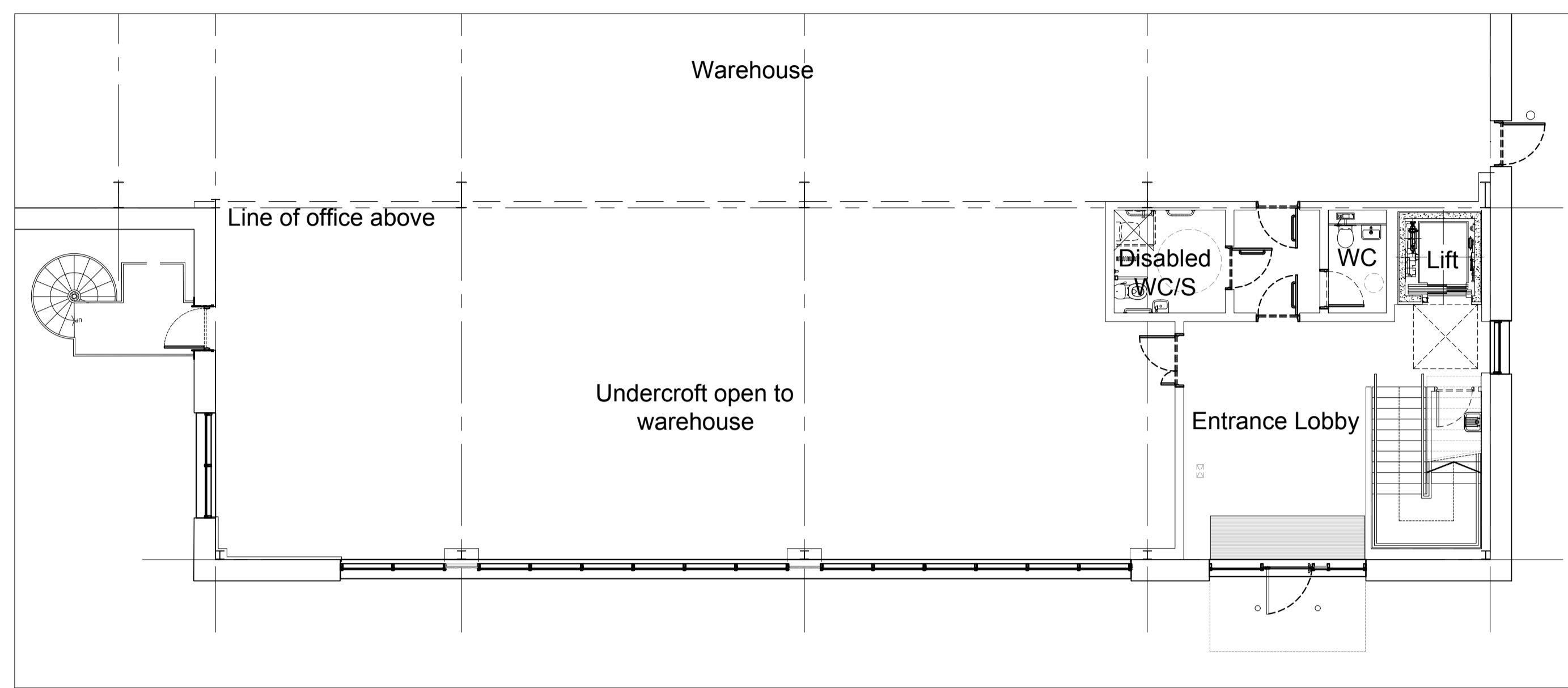
Notes:

KEY
① Water Supply & Drainage (capped off)

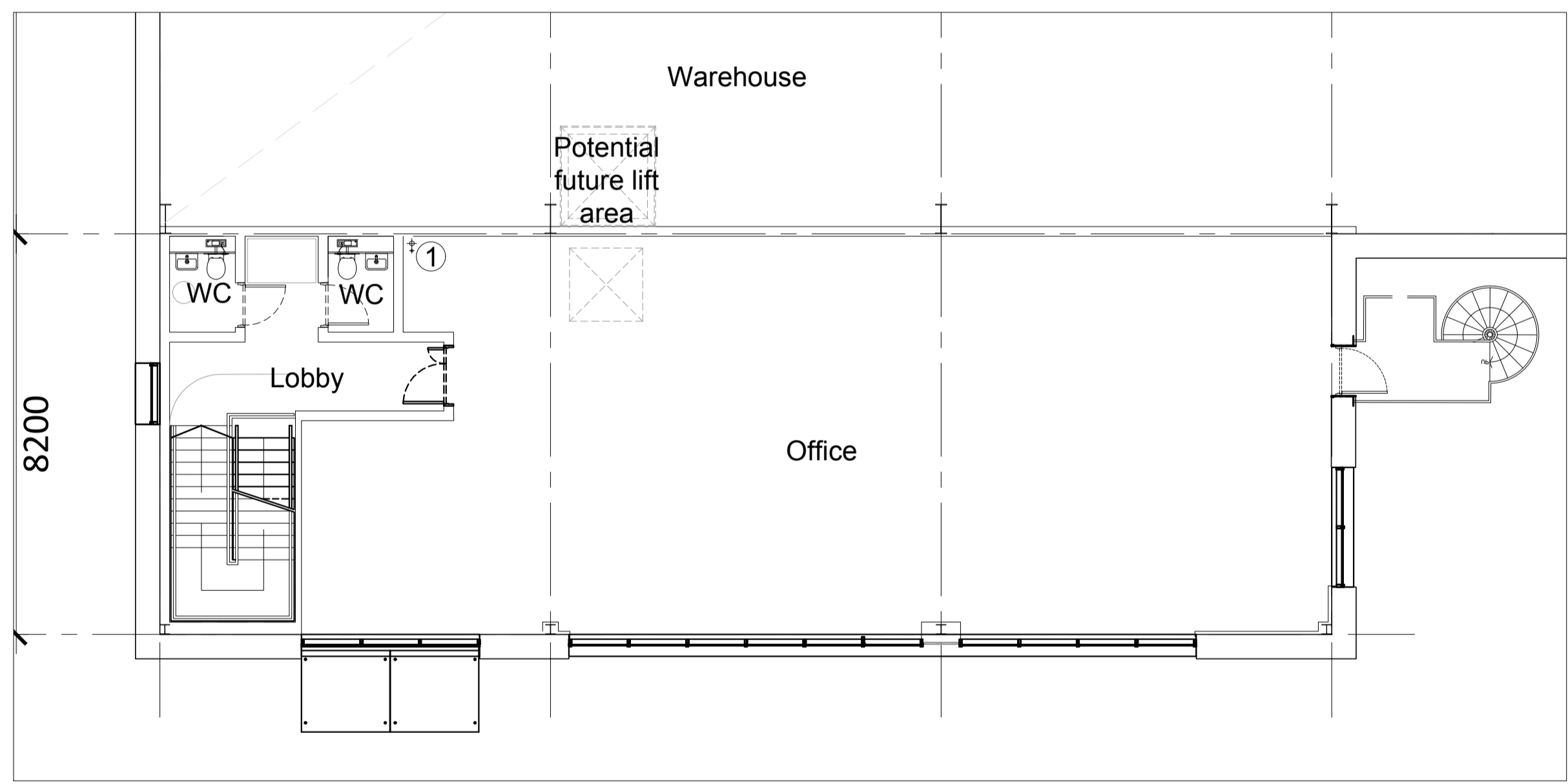
AREA SCHEDULE(GIA)	
UNIT 2 (GIA)	25,800ft²
Warehouse (Incl. office Undercroft)	23,750ft ²
Office (FF Only)	2,050ft ²
Car parking spaces	39
UNIT 3 (GIA)	34,500ft²
Warehouse (Incl. office Undercroft)	31,900ft ²
Office (FF Only)	2,600ft ²
Car parking spaces	45



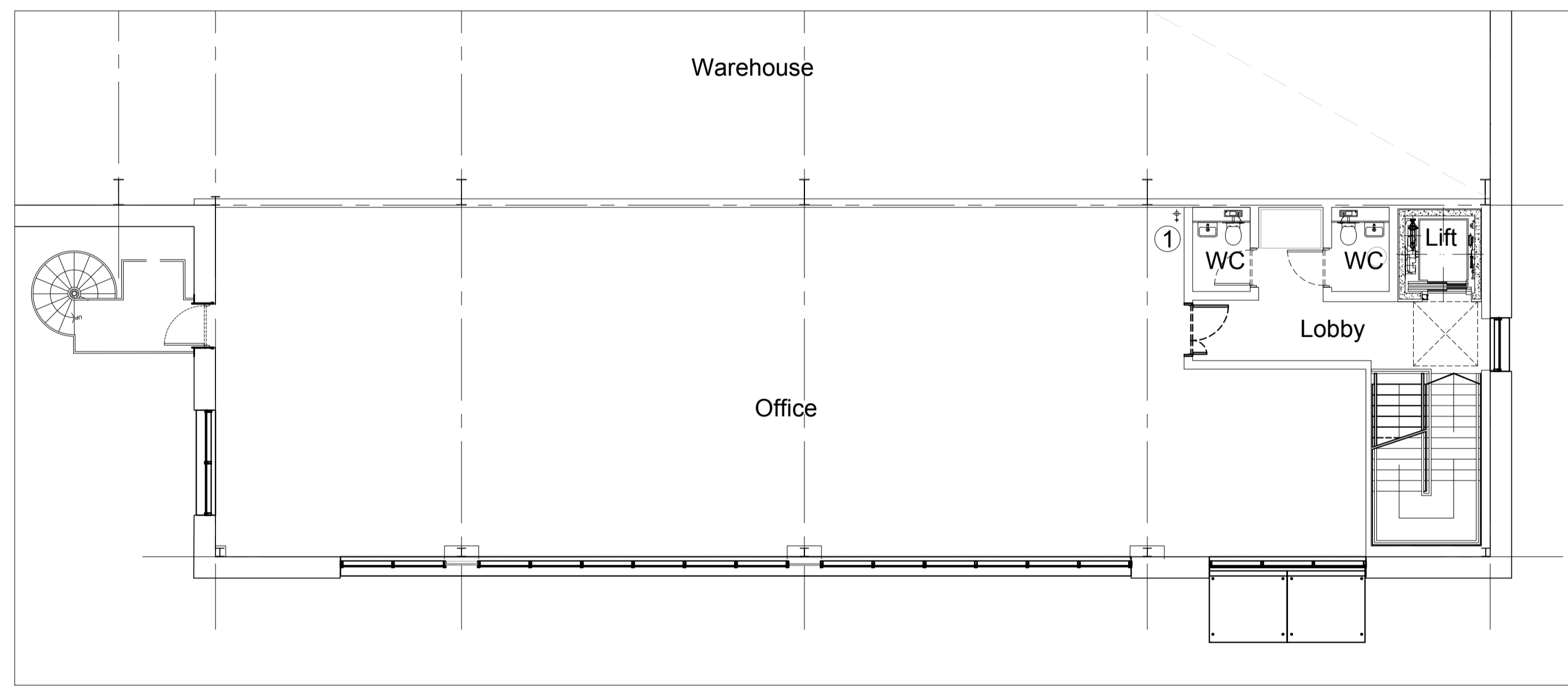
01 Unit 2 Ground Floor GA Plan
1:100 @ A1



02 Unit 3 Ground Floor GA Plan
1:100 @ A1



03 Unit 2 First Floor GA Plan
1:100 @ A1



04 Unit 3 First Floor GA Plan
1:100 @ A1

- Planning Issue	11.02.21	HT	HA
A Minor Amendments	28.01.21	HT	HA
- Draft Issue	22.01.21	HT	HA
Rev:	Notes:	Date:	Dwn:
Suitability Code:			
0 1 2 3 4 5			
Scale bar - 1:100m			



hale
ARCHITECTURE
22c Leathermarket Street, London, SE1 3HP

Project:
Grimshaw Lane, Manchester

Drawing Title:
Main Entrance & FF Office Plan
Units 2 to 3

Project No: 20066	Scale @ A1 @ A3 1:100 / 1:200	Revision: A
----------------------	----------------------------------	----------------

Drawing No:
PL1085