

RAVENSPARK F.S
GENERAL SPECIFICATION:

WALLS & CLADDING
ABOVE GF FLOOR LEVEL
COMPOSITE PANEL CLADDING SYSTEM WITH TOP-HAT JOINTS
PRE-COAT STEEL OUTER SKIN WITH SECRET-JOINTS, PUR INSULATION CORE
PRE-COAT STEEL INNER SKIN (generally lined with plasterboard or fire-liner board)
TYPICAL PANELS 1000mm MODULAR HEIGHT
MAX LENGTH 7800mm (Provisional)
EXTERNAL COLOUR (Panels & top-hats) RAL 2010 (Orange / Brown)

BELOW GF FLOOR LEVEL
FAIR-FACED CONCRETE BLOCKWORK 450 X 225mm MODULE
STRETCHER-BOARD WITH 10MM MORTAR JOINTS
COLOUR RAL 1015 (approx) LIGHT IVORY

BELOW DPC LEVEL (REAR SUNKEN AREA)
ENGINEERING BRICK STRETCHER-BOARD WITH 10mm JOINTS

SHOPFRONT & WINDOWS
COLOUR OF ALL EXPOSED FRAMING -RAL 8023 (PRANGE / BROWN)
POLYESTER POWDER-COATED EXTRUDED ALUMINIUM PROFILES, WITH GASKET SEALS
DOUBLE GLAZED SEALED UNITS, TOUGHENED AS REQUIRED
AUTOMATED SLIDING ENTRANCE DOORS
NIGHT-PAY WITH STAINLESS STEEL TRAY AT CONSOLE POSITION
INSULATED PRE-COAT STEEL CLADDING PANELS TO INFILL AREAS

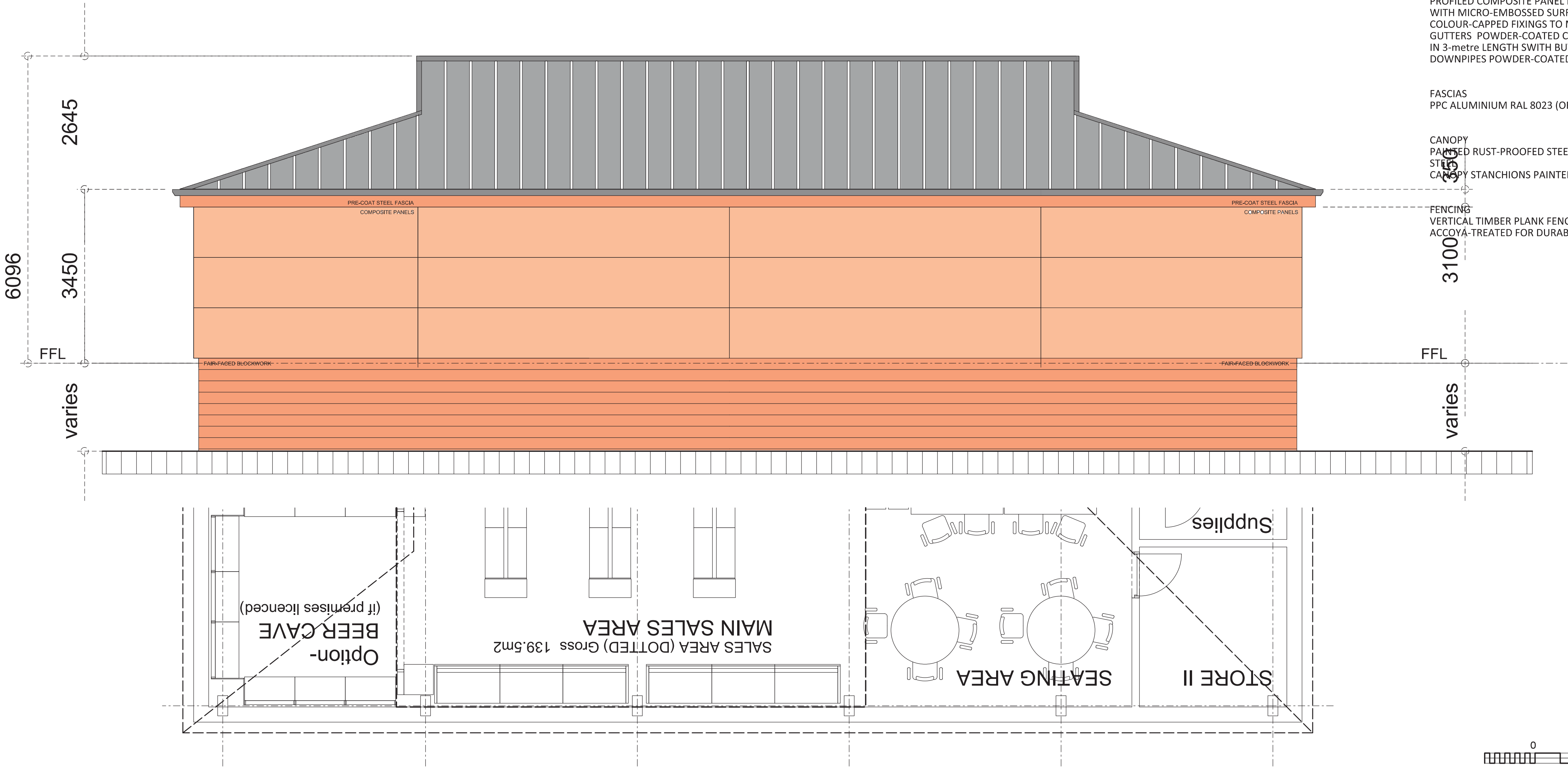
DOORS
STORE AND FIRE EXIT DOORS IN PRE-PAINTED STEEL WITH SS IRONMONGERY

ROOF & GUTTERS
PROFIED COMPOSITE PANEL ROOFING IN 1000mm MODULAR WIDTHS
WITH MICRO-EMBOSSSED SURFACE FINISH IN DARK GREY (RAL 7043)
COLOUR-CAPPED FIXINGS TO MATCH ROOFIN MATERIAL
GUTTERS POWDER-COATED CHANNEL-PROFILE ALUMINIUM (Dark grey to match roofing)
IN 3-metre LENGTH SWITH BUTTSTRAP JOINTS
DOWNPIPES POWDER-COATED BOX-SECTION ALUMINIUM TO MATCH GUTTERS

FASCIAS
PPC ALUMINIUM RAL 8023 (ORANGE / BROWN) WITH BUTTSTRAP JOINTS

CANOPY
PAINTED RUST-PROOFED STEEL STRUCTURE AND FASCIAS, SOFFITS IN WHITE PROFILED STEEL
CANOPY STANCHIONS PAINTED WHITE

FENCING
VERTICAL TIMBER PLANK FENCING -75mm & 200mm WIDTHS, 25mm GAPS
ACCOYA-TREATED FOR DURABILITY, WITH STAINED FINISH (SADOLIN) MID-BROWN COLOUR



REV.	DATE	DESCRIPTION	DRAWN	REV.	DATE	DESCRIPTION	DRAWN
		INITIAL DRAWING					
A	Oct 20	Building extended to rear (gross					
B	Feb 21	Scale noted (1:50 @ A1); Spec. added					

MACKENZIE ARCHITECTS		
ALEX. S. MACKENZIE & PARTNERS CHARTERED ARCHITECTS PO BOX 2853 BEARSDEN GLASGOW UK G61 9DT (T): 0141 942 6222 (w): www.mackenzie-projects.com (e): info@mackenzie-projects.com	PROJECT TITLE PROPOSED REDEVELOPMENT RAVENSPARK F.S. KILWINNING RD. IRVINE	JOB NO. 4336
	DRAWING TITLE SALES BUILDING REAR ELEVATION (SOUTH) -AS PROPOSED	DWG NO. 17 B