

Moxy Hotel Bristol

Installation : Front Fascade

Project number :
Customer : Emtec Group
Processed by : SAC
Date : 15.12.2020

Project description:
Designed to achieve the following average illuminance levels:

Office Area 350-400 Lux Ave @ 0.75AFFL +/- 10%

Emergency lighting designed to achieve a min 0.5 lux in obstructed open areas and a minimum of 1 lux down the centre line of any escape route with a minimum of 0.5 lux 1m either side.

A maintenance factor of 0.8 has been used in all calculations

The following values are based on precise calculations performed on calibrated lamps and luminaires, and their configurations, whereby gradual, unavoidable deviations can occur in practice. All guarantee claims are excluded for the specified data.

This exclusion of liability applies irrespective of the legal grounds for both damages and consequential damages suffered by users and third parties.

Object : Moxy Hotel Bristol
Installation : Front Fascade
Project number :
Date : 15.12.2020

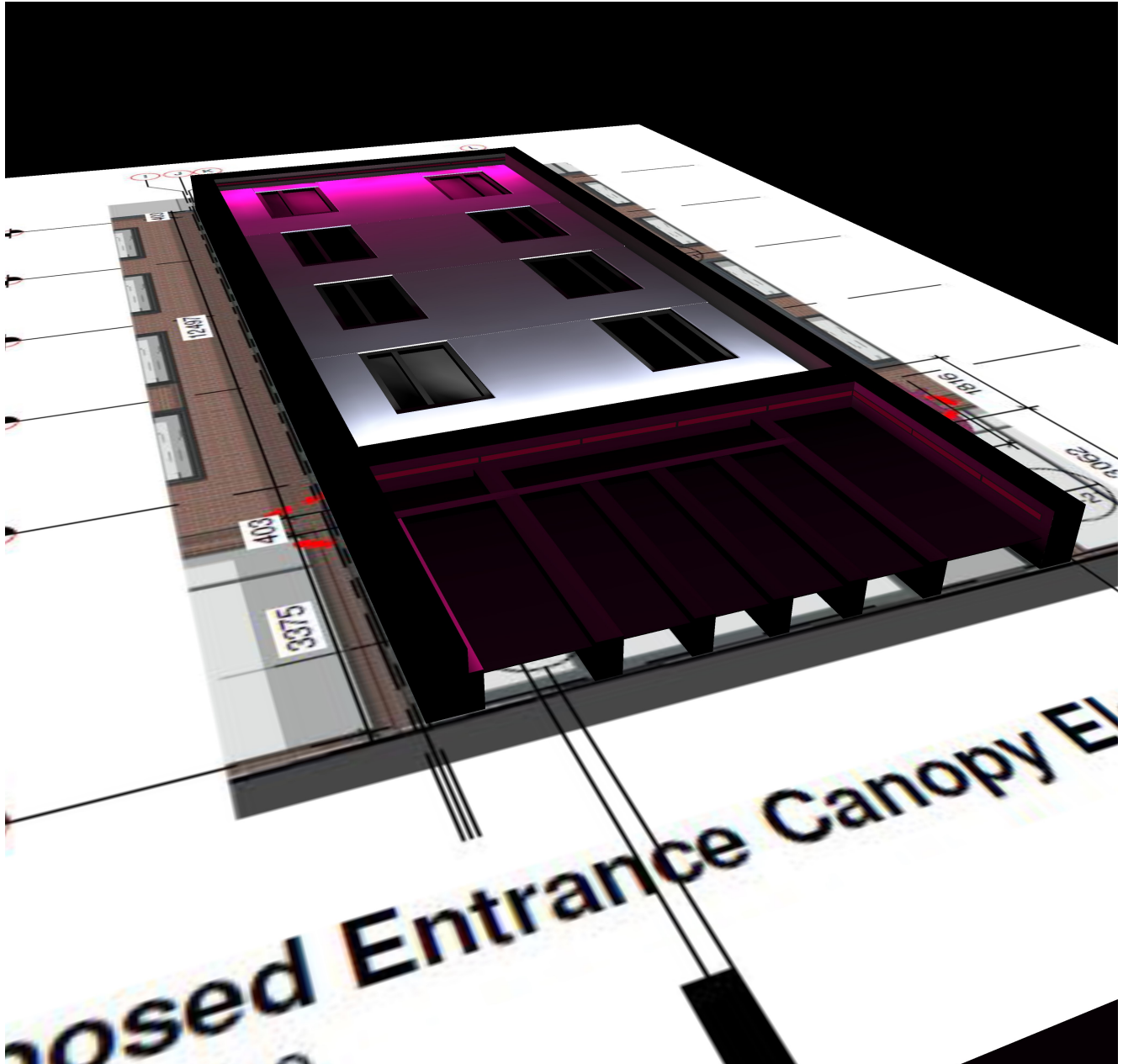
Table of contents

First Page	1
Table of contents	2
1 Exterior 1	
1.1 Calculation results, Exterior 1	
1.1.1 3D luminance, View 1	3
1.1.2 3D luminance, View 2	4
1.1.3 3D luminance, View 3	5

1 Exterior 1

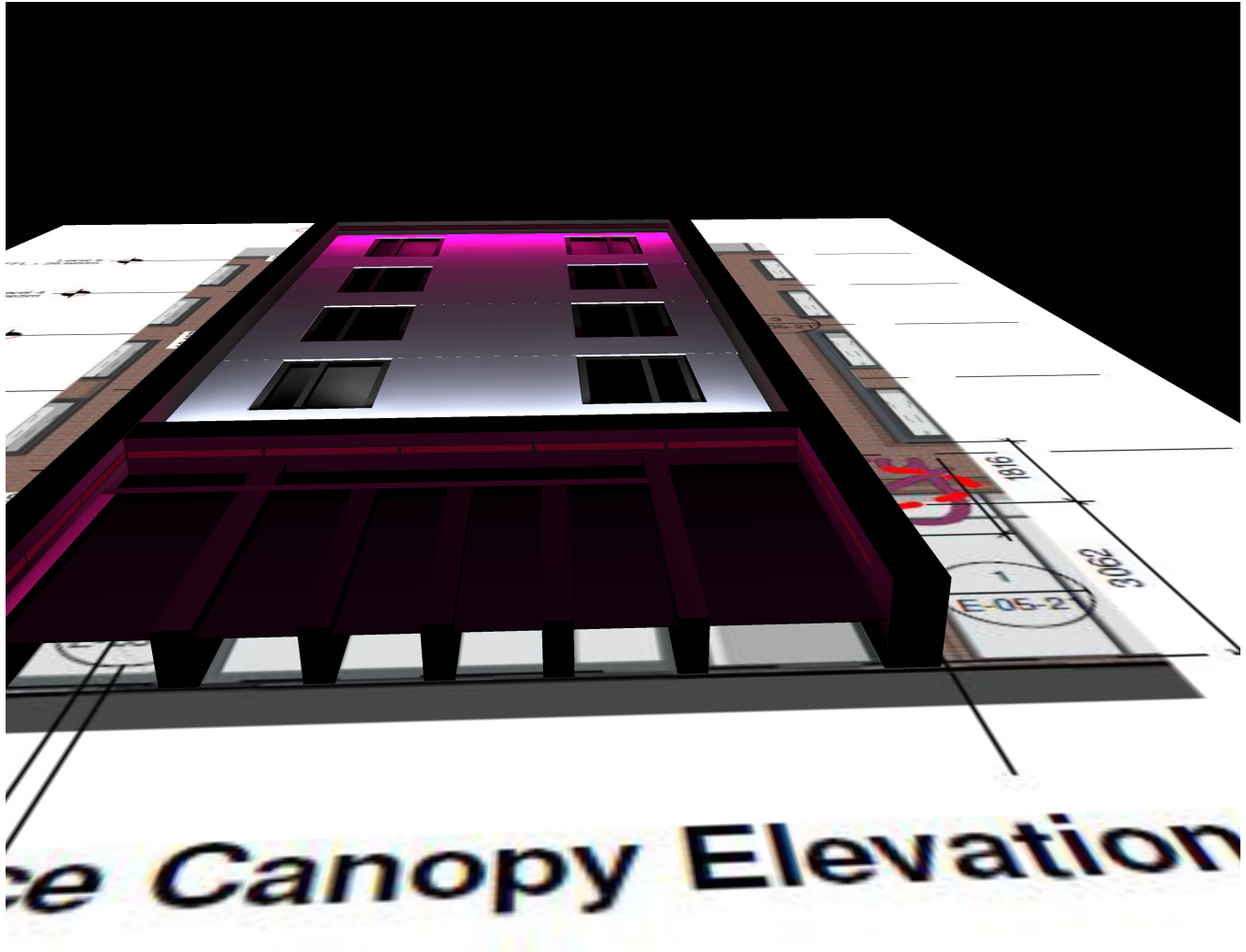
1.1 Calculation results, Exterior 1

1.1.1 3D luminance, View 1



1.1 Calculation results, Exterior 1

1.1.2 3D luminance, View 2



1.1 Calculation results, Exterior 1

1.1.3 3D luminance, View 3

