

# Moxy Bristol Undercroft & Living Wall Lighting

Proposed Lighting Design

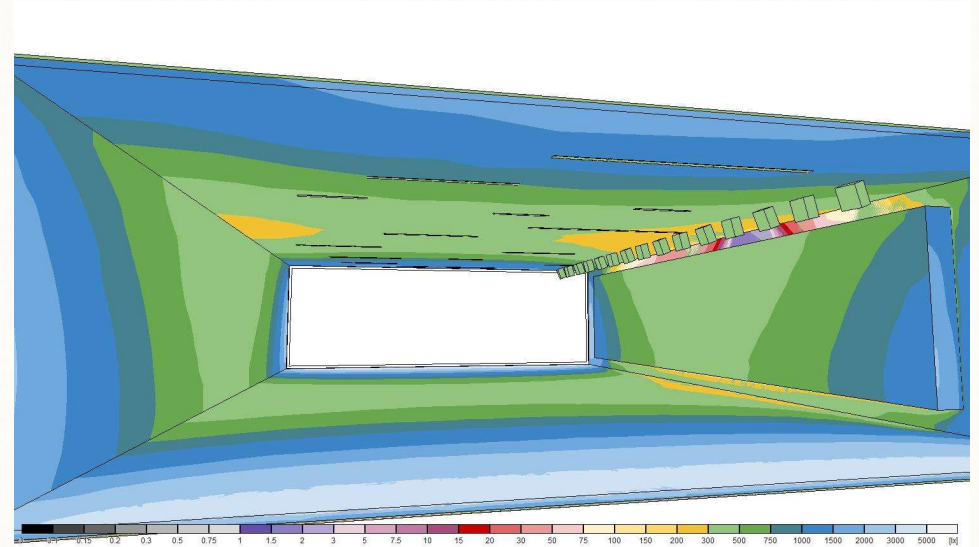
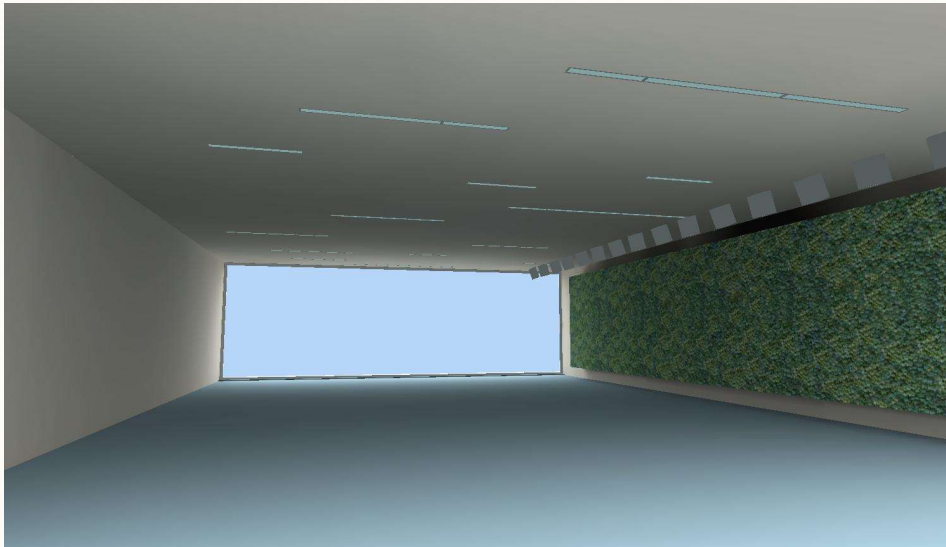
The Well Building  
112 High Street, Lees  
Oldham, Lancashire OL4 5DJ

**UR-EK**  
LIGHTING & CONTROLS LTD  
Design to Distribution

# Daylight Contribution Only

Daylight evaluation based upon CIE Overcast Sky data. Low light plants typically survive with 1600-2700 Lux lighting.

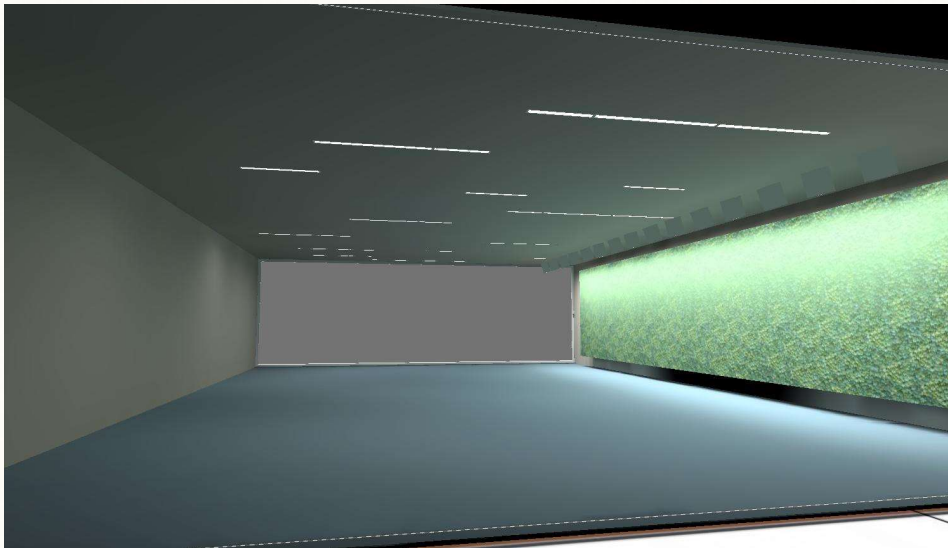
The average daylight contribution is calculated to be 650 lux on the living wall. This will obviously vary over the year.



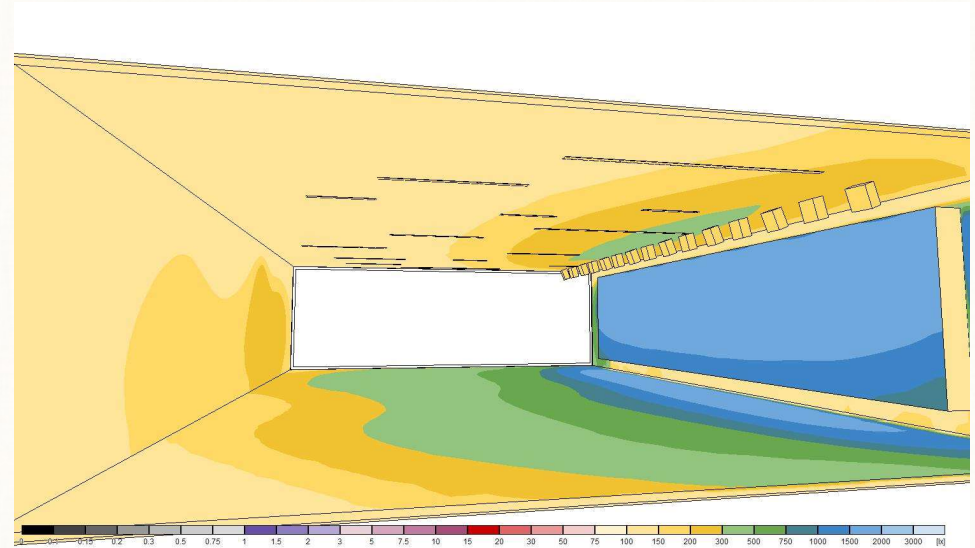
The Well Building  
112 High Street, Lees  
Oldham, Lancashire OL4 5DJ

# Artificial Light Contribution Only

Calculation taking into account only artificial light. This includes the ambient ceiling recessed luminaires as well as the living wall task lighting.



The average artificial light is calculated to be 2,280 lux on the living wall. This is with a minimum of 800 lux in the bottom corner of the wall.

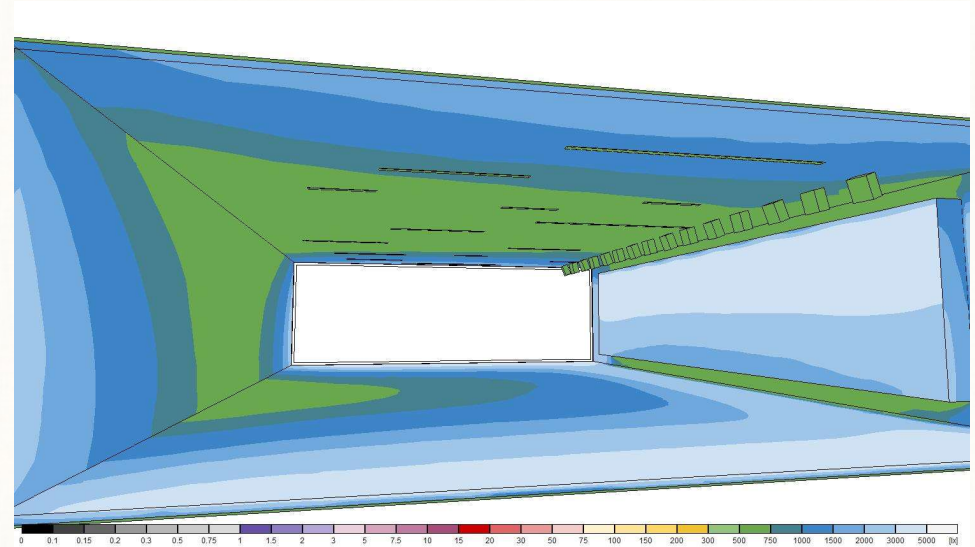
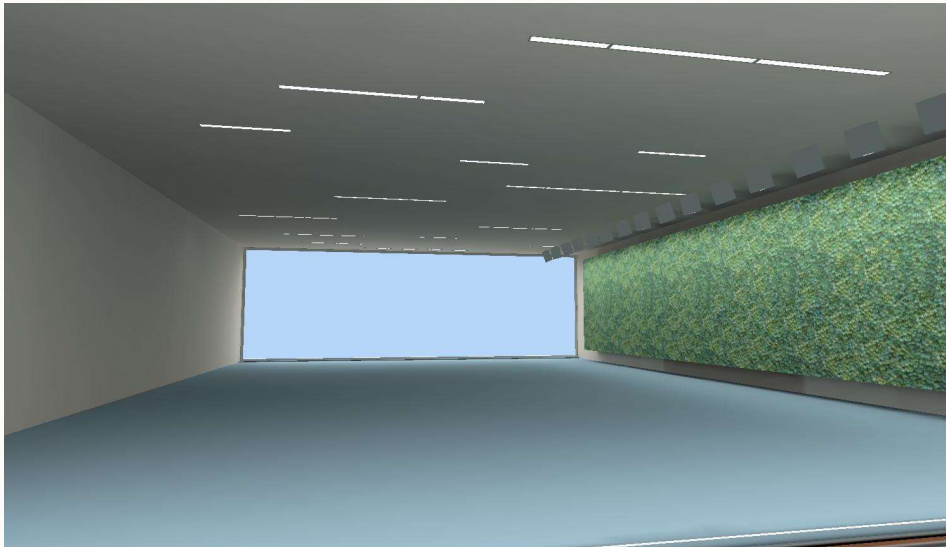




# Daylight & Artificial Light Combined

Calculation taking into account daylight and artificial light. This includes the ambient ceiling recessed luminaires as well as the living wall task lighting.

Taking the average daylight contribution and the full artificial light contribution the calculation predicts an illumination of 2,940 lux on the living wall. It is advised by indoor planting specialists that lighting is on a 12 hour on/off cycle

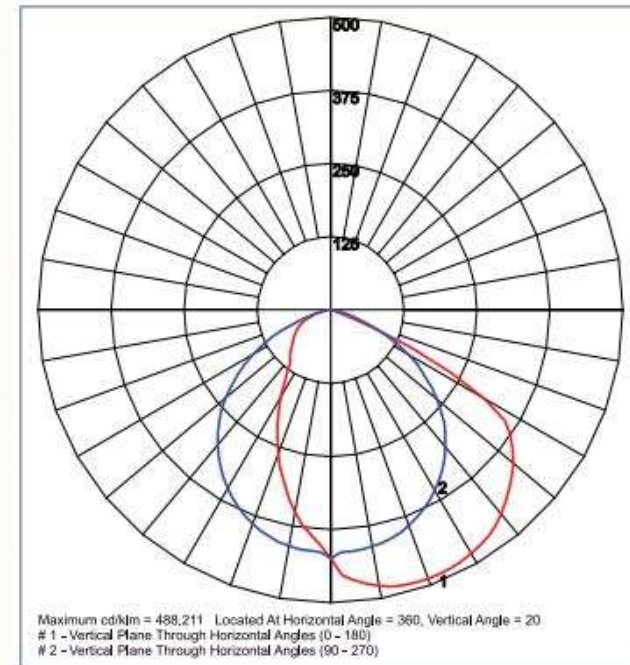


# Living Wall Task Lighting Luminiare

TV3ECE Traverse flood light. Designed to be used outdoors with an IP66 rating. Finished in black with a chromate conversion coating. It is anticipated that this product could be exposed to strong gusts of wind and spray, due to its fixing to the soffit.



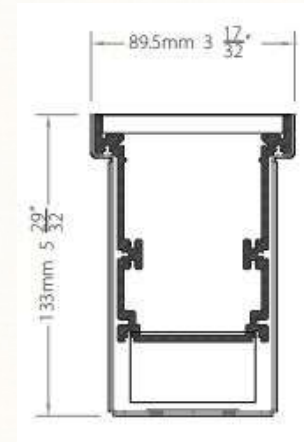
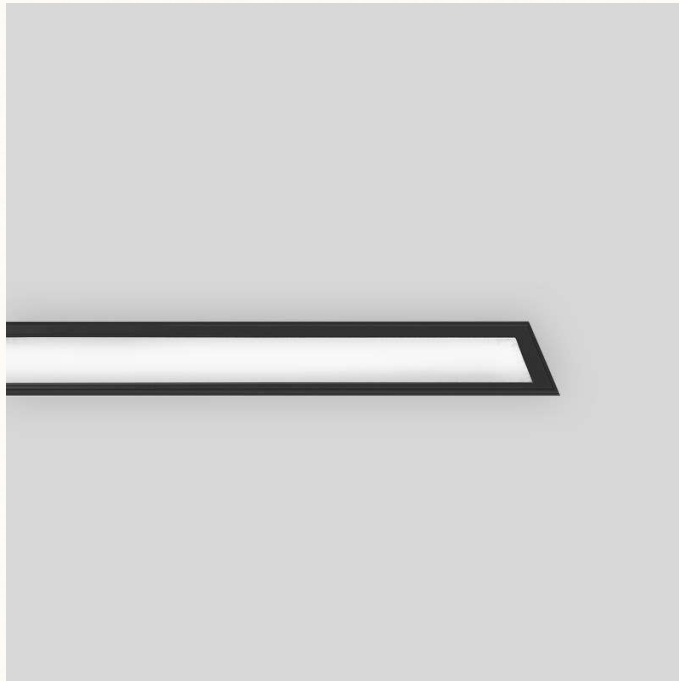
The optical distribution is ideal for this application, providing a good spread of light top to bottom of the living wall.



# Ambient Ceiling Recessed Luminaire

Lightway 6 Outdoor linear recessed luminaire. An architectural product designed for harsh environments. Constructed from extruded aluminium with opal glass lens.

Available in 600mm, 900mm and 1,200mm modules, as individual luminaires or continuous runs



# Moxy Bristol Undercroft & Living Wall Lighting

Proposed Lighting Design

The Well Building  
112 High Street, Lees  
Oldham, Lancashire OL4 5DJ

**UR-EK**  
LIGHTING & CONTROLS LTD  
Design to Distribution