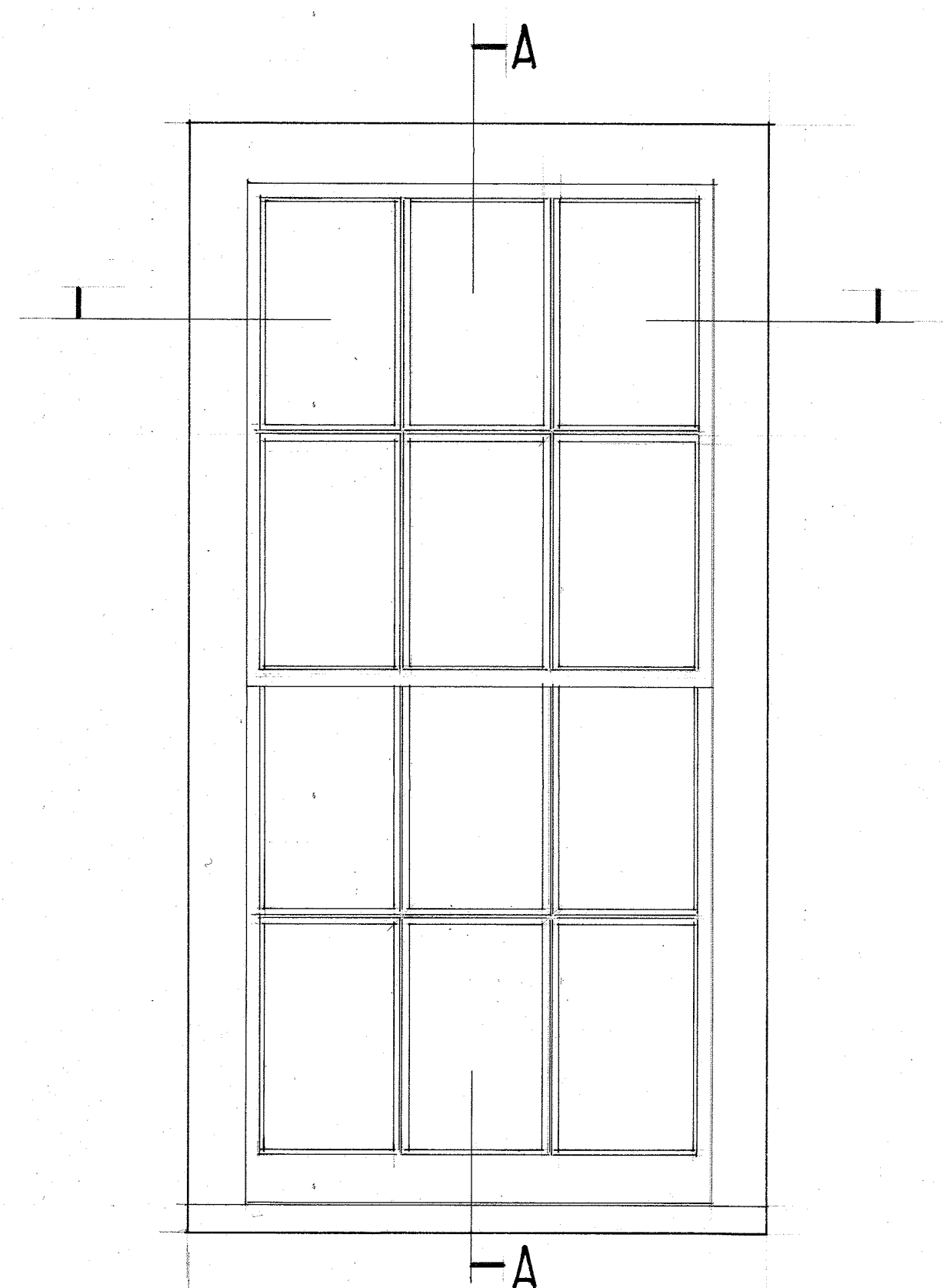


Horizontal Section at B-B

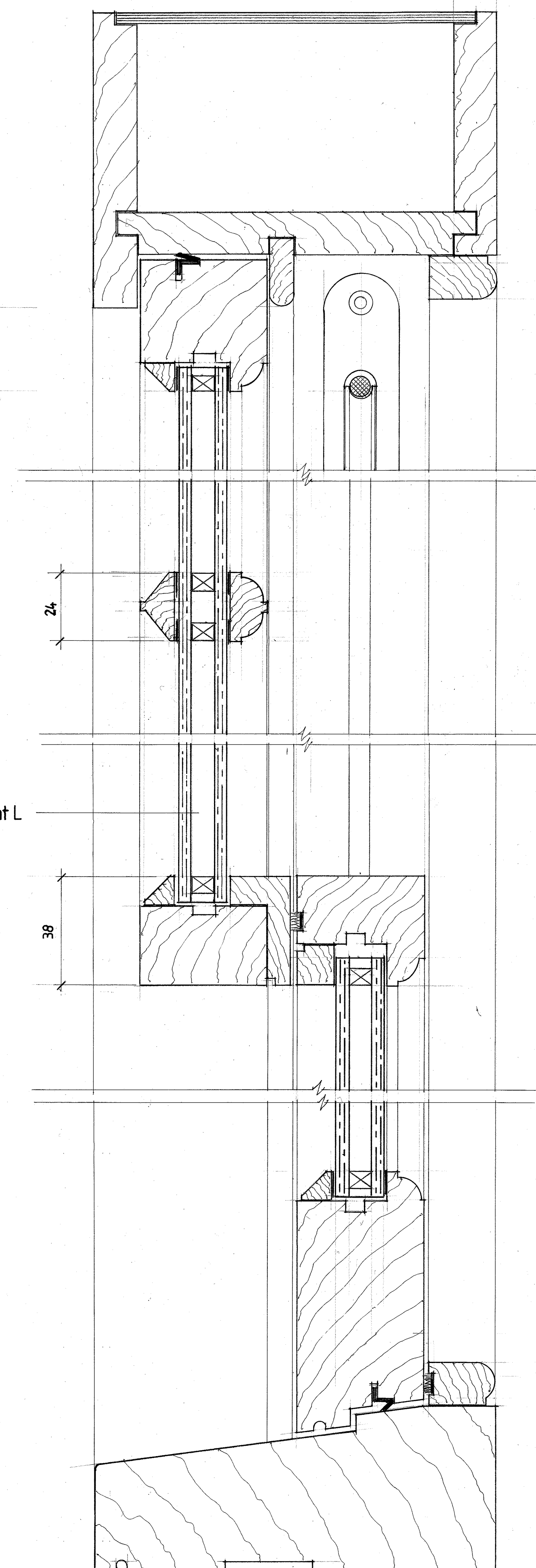


Elevation of typical window drawn at scale 1:10

Woodland heritage box sash window details

Woodland 'Slimseal' double glazed units
4-8-4 Krypton gas filled complies with document L

Note: where sash horns are required they can be produced to match any that are existing



Vertical Section at A-A

Notes:-
Contractors to check all dimensions on site.
Don not scale drawings use dimensions given.
Drawings to large scale to take priority.
This drawing to be read in conjunction with :-

Revisions:-

Job:-

Title:-
HERITAGE BOX SASH WINDOW
CONSTRUCTION DETAILS

Job No. Dwg No. 0520/2

Date MAY 2020 Drawn J. West Scale 1:10 & FULL SIZE A1

Woodland Products Design Ltd St Peters House
6 Cambridge Road
Kingston upon Thames
Surrey
KT1 3JY
T- 020 8547 2171
F- 020 8547 1722