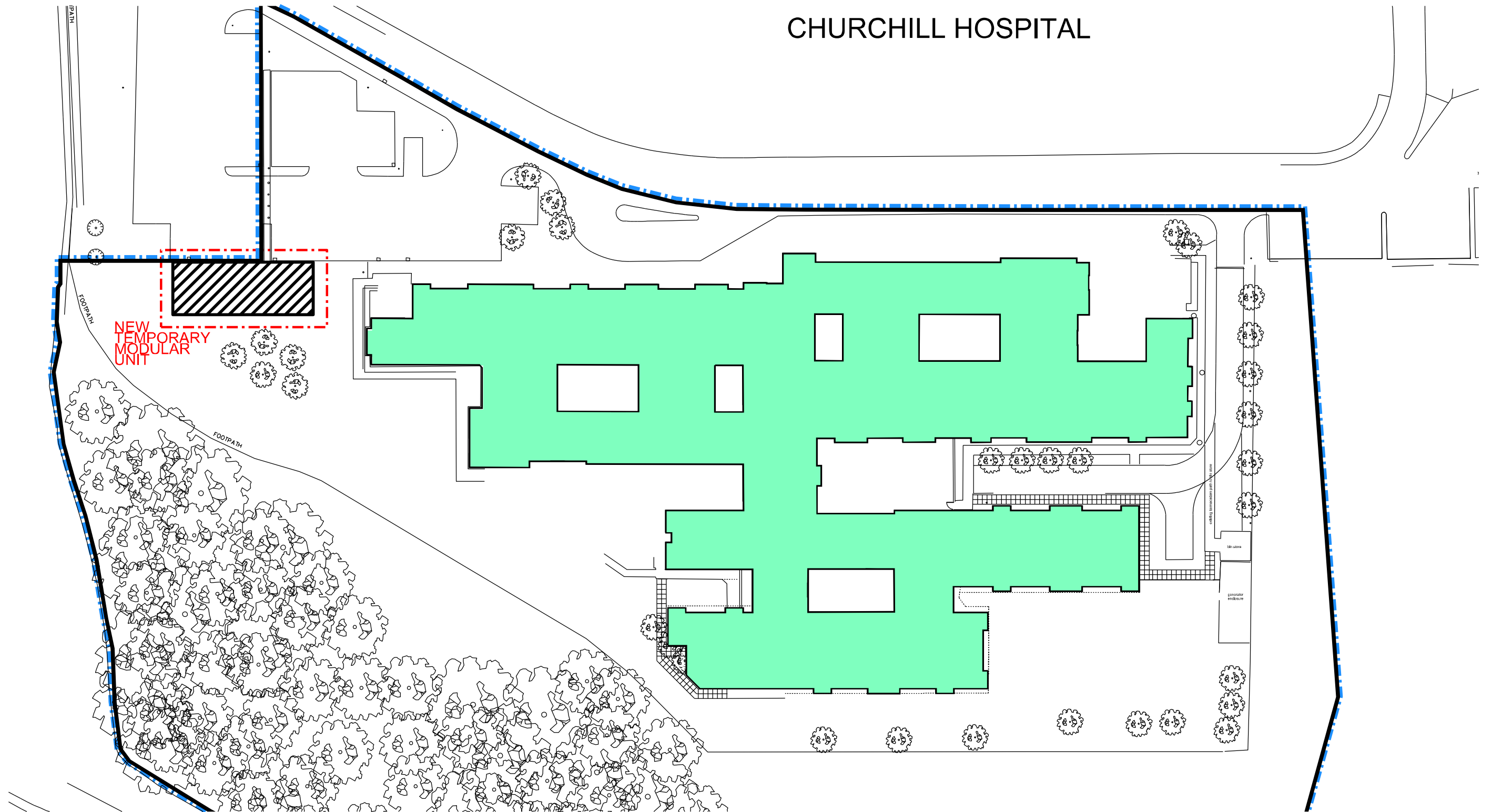


CHURCHILL HOSPITAL



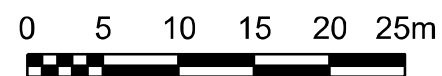
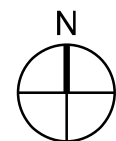
revision | by | date | index

Oxford Health
NHS Foundation Trust
Modular Building



Fulbrook Centre
Block Plan

Oxford office: St Thomas House, 6 Becket Street, Oxford, OX1 1PP
t: 01865 305130 f: 01865 246424 w: www.gbshealth.co.uk



scale 1:500 A3 date 07/01/21 drawn TS

6981.006