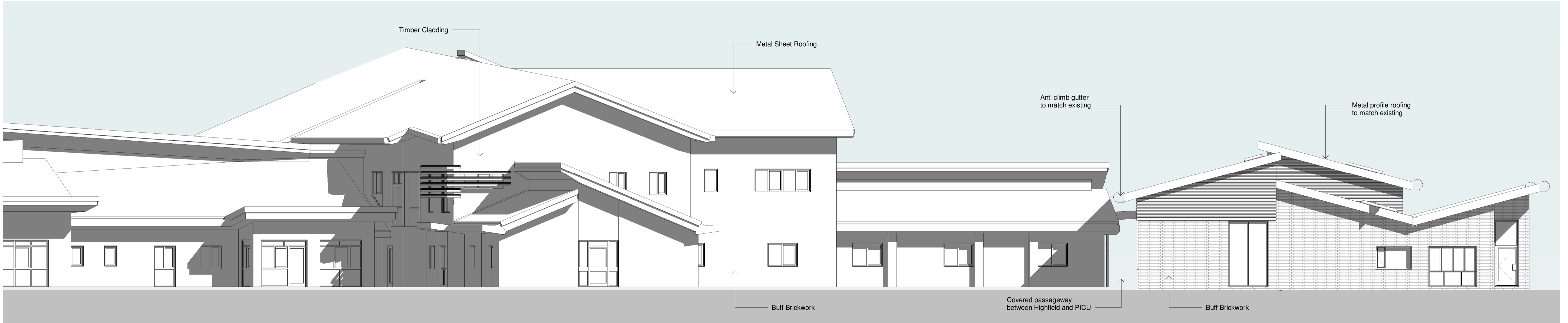


PICU Annex

Existing Highfield Unit

Northwest Elevation - Planning
1 : 100

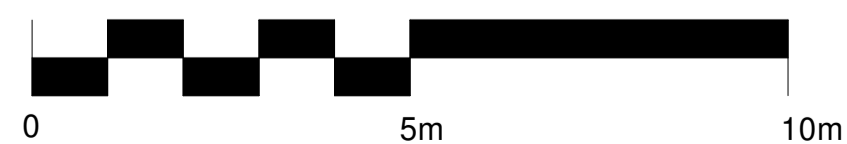


Existing Highfield Unit

PICU Annex

Southeast Elevation - Planning
1 : 100

Scale: 1:100



revision | by | date | index

Oxford Health NHS Foundation
Trust, Highfield PICU Extension,
Warneford Hospital, Oxford



Proposed Northwest &
Southeast Elevations

Oxford office: St Thomas House, 6 Becket Street, Oxford, OX1 1PP
t: 01865 305130 f: 01865 246424 w: www.gbshealth.co.uk

scale 1 : 100 date 14/01/21 drawn KH

6955.200