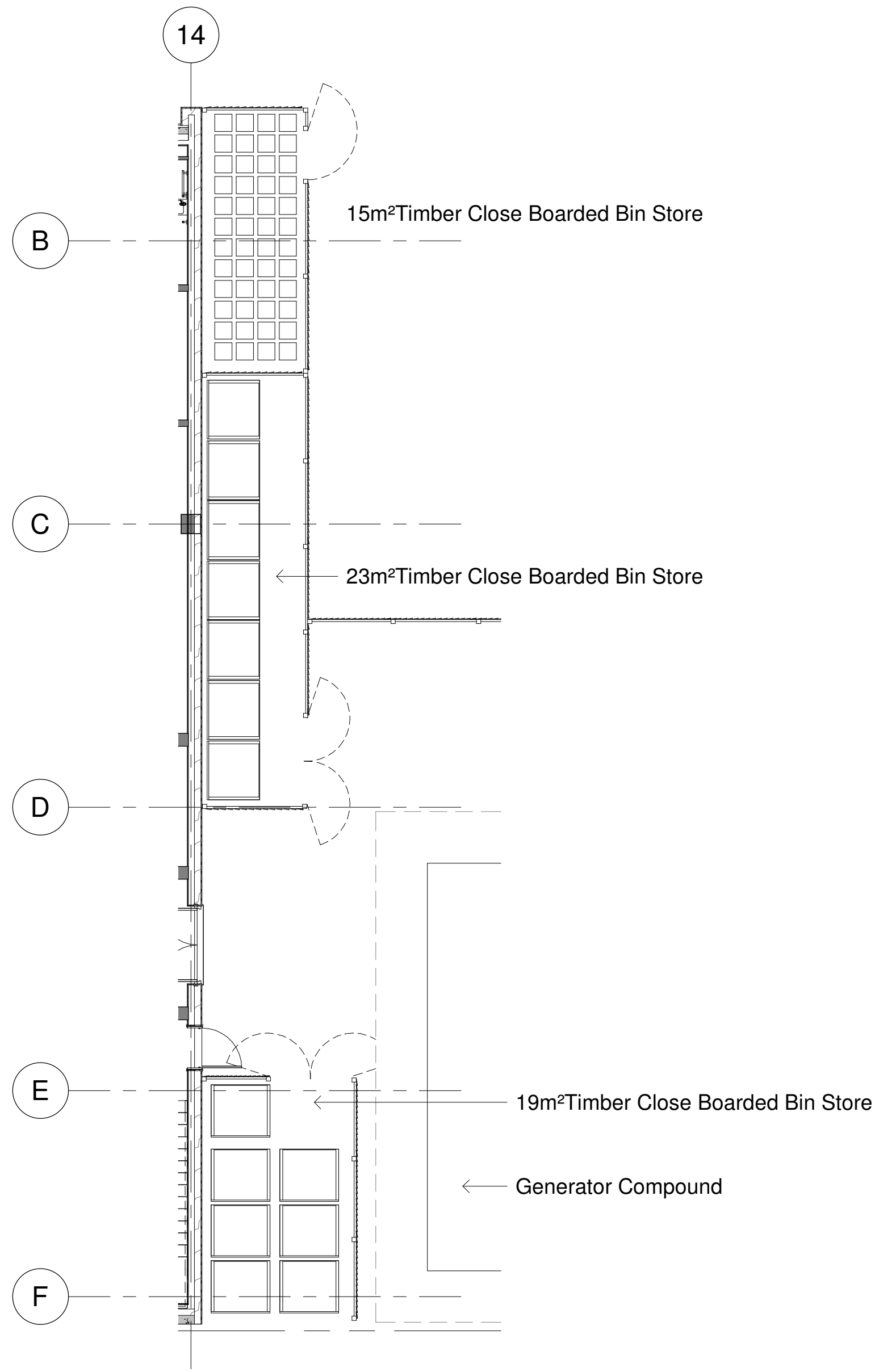


- Provision for 15m² (13m² minimum) Timber Close Boarded Bin Store , with washdown hose and drainage facilities.
- Provision for 23m² Timber Close Boarded Bin Store, with washdown hose and drainage facilities to accommodate 7 no. waste bins.
- Building access to bin store via rear goods-in lobby.
- Provision for 19m² Timber Close Boarded Bin Store , with washdown hose and drainage facilities to accommodate 7 no. clinical waste bins.
- One Way Lorry access route to bin store provided via Car park and exit through Windrush Court.

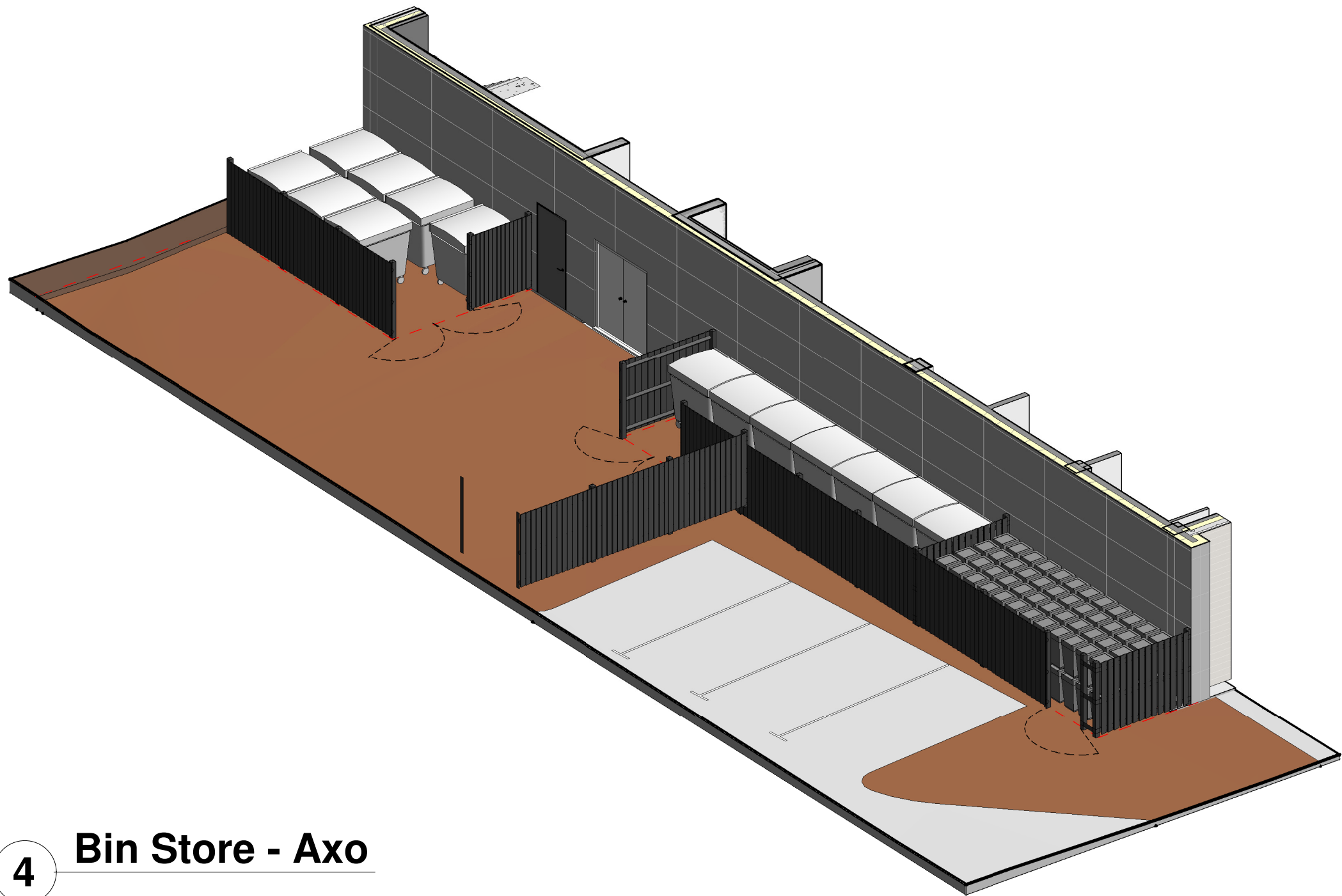
1 Provision of Bin Store Site Plan
1 : 500



3 Bin Store - Elevation
1 : 50



2 Bin Store - Plan
1 : 100



4 Bin Store - Axo

Notes

The Contractor is to check all dimensions and conditions on site before commencing. Do not scale from this drawing.

This drawing remains the copyright of FAIRHURSTS DESIGN GROUP.

Scale Bars TO BE USED ONLY AS GUIDANCE

1:100	mm	1000	5000	5000
1:200	mm	5000	8000	8000
1:500	M	5	15	25
1:1250	M	10	30	70

P01	Issued for Planning	AMA	29/01/21
Rev	Description	By	Date
Project Status		Drawing Status	
PLANNING			
This information, whether drawn or as a data file, is copyright and issued strictly for use on the project for which it is provided			
Client / Project			
T-SQUARED			
WIC HOUSE DEVELOPMENT			
Drawing			
Waste and Recycling Stores			
Date	12/23/20	Scale	As indicated
Drawn By	PS	Checked	MCA
Manchester: 55 King Street Manchester M2 4LQ +44 (0)161 831 7300			
Southampton: Minor Park Minstead Southampton SO43 7FY +44 (0)23 8081 7900			
Cambridge: CB1 Business Centre 20 Station Road Cambridge CB1 2JD +44 (0)1223 863 868			
www.fairhursts.com			
7682-08118		Status	P01
7682-FDG-XX-XX-DR-A-08118-P01			

7682-FDG-XX-XX-MS-A-0001
29/01/2021 13:13:56
A1L