

## Technical Data Sheet

V08-2020

# Walk-on Flatglass Rooflights

- ▶ A safe, modern and attractive daylighting solution for roof terraces, enabling the enhancement of both outdoor and indoor living spaces

### Key Features & Benefits

- ▶ 15 year warranty\*
- ▶ External and Internal Walk-on rooflight options
- ▶ Contemporary, minimalist framework design
- ▶ Black (RAL 9005) painted border as standard (other painted border colours available)
- ▶ Ideal solution for introducing more natural daylight into basements and cellars
- ▶ Excellent thermal performance, achieving system U-values as low as 0.9 W/m<sup>2</sup>.K with super Low-E coatings and specialist glass
- ▶ Quick and easy to install on-site including fixing cover cap for concealed fixings
- ▶ More daylight = less artificial light = energy savings
- ▶ BIM Objects
- ▶ NBS Specification document
- ▶ Product CAD drawings
- ▶ Install guides
- ▶ Integral blind
- ▶ More daylight leads to enhanced well-being

### Frame Specification

- ▶ The Fixed Flatglass rooflight frame is manufactured from extruded aluminium section to BS 1474, EN 12020-1:2001
- ▶ Polyamide thermal break to BS EN ISO 16396-2:2017 within the glazing frame makes it fully thermally-broken and extremely thermally-efficient
- ▶ Polyester Powder Coated Aluminium to BS EN 12206-1:2004
  - ▶ RAL Colour: Anthracite Grey (RAL 7016) frames
  - ▶ White (RAL 9010) and Black (RAL 9005) frames are also available as standard options
  - ▶ Bespoke RAL colour options available
  - ▶ Matt finish as standard
  - ▶ Anti-Slip coating always recommended

### Glass Specification

- ▶ Outer: 33mm, 39mm or 48mm clear toughened and laminated safety glass with painted border
- ▶ Cavity: 16mm Argon filled with Swisspacer warm edge spacer silicone bonded for a UV resistant edge seal
- ▶ Inner: 6mm clear toughened or 13.5mm clear heat strengthened laminated safety glass
- ▶ Surface Etching available to provide slip-resistance to BS 7976-2
- ▶ Designed to CWCT Class 0 (BS EN 1991-1-1: Actions on Structures)

### Product Testing & Certification

- ▶ Weathertightness: CWCT Class A4 Air Leakage, Resistance to Wind Class E2400 Pa and Watertightness Class R7
- ▶ Non-fragility: CWCT Class 0 compliant rooflights
- ▶ AA Fire-rated: AA Designation (National Class) or Broof (T4) European Class and Euro Class A1 non-combustible

### Critical Kerb External Dimensions (Standard Glass Specification)

#### Single Pane Walk-on rooflights:

- Min. Kerb Height: 150mm (at the eaves end - External Walk-on)
- Min. Kerb Thickness: 75mm (excluding finishes - External Walk-on)
- Min. End Bearing: 50mm (Internal Walk-on)
- Max. Size: 2500mm x 3200mm (dependent on glass specification)
- Min. Size: 400mm x 400mm
- Min. Pitch: 0°

### Bespoke Glass Options

- ▶ Privacy Glass
- ▶ Body Tinted
- ▶ Acoustic Laminate
- ▶ Easy-clean Coatings (Ritec)
- ▶ Solar Control PVB
- ▶ Integral Blind
- ▶ Slip resistant coating range
- ▶ Triple Glazed and Laminated Inner pane options

### British Standards Compliance

- BS 6375-1: 2015+A1:2016 Weathertightness
- BS EN 1026:2016 Air Permeability
- BS EN 1027: 2016 Watertightness
- BS EN 12211: 2016 Wind Resistance
- BS EN 12206-1:2004: Polyester Powder Coating

### Rooflight Performance

- Building Regulations (E&W) Approved Document L compliant design to achieve low U-values
- U-values: As low as 0.9 W/m<sup>2</sup>.K
- G-values: As low as 0.33
- Light Transmission: Up to 71%



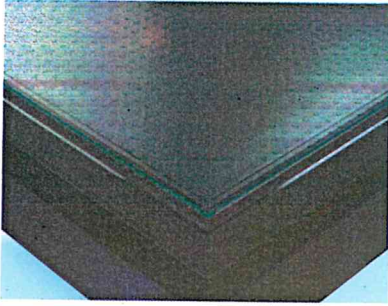
Roofglaze

Lighting, by nature.™



# Technical Data Sheet

V08-2020



## Loading Options

Residential specification glazing:  
for up to 1.5kN/m<sup>2</sup> distributed and 2.0kN concentrated loads

Commercial specification glazing:  
for up to 4.0kN/m<sup>2</sup> distributed and 3.6kN concentrated loads

Heavy Commercial specification glazing:  
for up to 5.0kN/m<sup>2</sup> distributed and 4.5kN concentrated loads

Other load states from BS EN 1991-1-1 to be agreed

## Design Loadings

EN 1991-1-1 Categories: A1, D2, C34 or any other agreed load

Product Weight:

33mm glass 1m x 1m = 115 kg (External Walk-on)

33mm glass 1m x 1m = 85 kg (Internal Walk-on)

## Product Variations

- ▶ Multi-pane Walk-on rooflights with silicone jointed glazing for a flush outer surface (see Multi-section Flatglass data sheet or the Roofglaze website for more details)
- ▶ Circular, elliptical and bespoke shaped rooflights available
- ▶ Head Abutments
- ▶ Verge Abutments
- ▶ Head and Verge Abutments up to three sides
- ▶ Multi-pane

## Rooflight Cleaning & Maintenance

All of our Flatglass rooflights can be supplied with an Easyclean coating, the **Ritec ClearShield** system provides an efficient solution to greatly reduce the need for cleaning.

'Non-stick', Easy-clean rooflight protection provides:

- ▶ Reduced cleaning time, effort and frequency
- ▶ Keeps rooflights looking like new, staying cleaner for significantly longer
- ▶ Resists glass staining and contamination from tree sap, bird droppings, traffic pollution and general dirt
- ▶ Helps to maintain Window Energy Ratings

\*Please see the Roofglaze Terms & Conditions of Sale for more details

**Roofglaze**

Lighting, by nature.™

Get in touch for Technical and Estimating Advice  
T: 01480 474 797 Email: [info@roofglaze.co.uk](mailto:info@roofglaze.co.uk) [www.roofglaze.co.uk](http://www.roofglaze.co.uk)

**Roofglaze**

11 Howard Road, Eaton Socon, St Neots, Cambridgeshire PE19 8ET

**CDM HAZARD IDENTIFICATION - HANDLING MATERIALS**  
 BE AWARE OF SHARP EDGES AND CORNERS WHEN HANDLING MATERIALS. MOST EDGES AND CORNERS WILL BE DEBURRED BUT THERE IS STILL A SMALL RISK. WEAR APPROPRIATE PPE REQUIRED FOR THE JOB. THE MCHG 1992 SET OUT A CLEAR RANKING OF MATERIALS FOR DEALING WITH RISKS FROM MANUAL HANDLING, THEN ARE:  
 • FIRST: AVOID HAZARDOUS MANUAL HANDLING OPERATIONS SO FAR AS IS REASONABLY PRACTICABLE.  
 • SECOND: ASSESS ANY HAZARDOUS MANUAL HANDLING OPERATIONS THAT CANNOT BE AVOIDED, AND  
 • THIRD: REDUCE THE RISK OF HAZARDOUS MANUAL HANDLING OPERATIONS AS IS REASONABLY PRACTICABLE.  
 HAND PROTECTION (MAGNETIC) TO BS EN 388:1994  
 PROTECTANTS MUST ONLY BE INSTALLED BY COMPETENT CONTRACTORS.  
 CHANGE OF DRIVING GLASS IF IT IS WALKED FROM GLASS IS CLASSIFIED AS HIGH RISK BUT SHOULD BE IN WALKED ON USE SPEAKER RECORDS.  
 REFER TO RISK ASSESSMENT FOR FURTHER DETAILS.

**NOTES**

**X No. REQUIRED**

**GLASS SPEC:**  
 OUTER : 33mm CLEAR TOUGHENED AND LAMINATED GLASS - 10/1.5/10/1.5/10  
 CAVITY : 16mm ARGON FILLED + WARM EDGE SPACER  
 INNER : 6mm CLEAR HST TOUGHENED GLASS + LOW E TO CAVITY FACE BONDED

**LIGHT TRANSMISSION = 73.2%**  
**SOLAR GAIN = 46.8 g**  
**CENTRE PANE U-VALUE = 1.1 W/m².K**  
**ACOUSTIC = NPD**

**ROOFLIGHT ORDER SIZE = OVERALL FINISHED AND WEATHER KERB DIMS.**

**GLASS BONDED TO FRAME WITH GLAZING SECURITY TAPE - TN136.**

**KERB DETAILS SHOWN INDICATIVE DETAILED DESIGN BY OTHERS.**

**RECOMMENDED FALL SHOWN TO HELP SHED WATER ONLY. UNIT CAN BE INSTALLED AT LOWER PITCHES. HIGHER IF NO WATER AT ALL IS DESIRED.**

**PRODUCT U-VALUE = U-Values are size dependant**  
**CENTRE PANE U VALUE = AS LOW AS 1.0W/M².K TO SPECIAL ORDER.**

**FLOOR LOADINGS TO BS EN 1991-1-1:**

- 1.5 kN/m² Uniformly distributed load
- 2.0 kN Concentrated load
- 4.0 kN/m² Uniformly distributed load
- 3.6 kN Concentrated load
- 5.0 kN/m² Uniformly distributed load
- 4.5 kN Concentrated load

**THESE LOADS ARE ARBITRARY. GLASS THICKNESS MAY VARY DEPENDING ON LOADS. LOADS TO BE AGREED/SPECIFIED BY CLIENT.**

**PAINTED BORDER SHOWN AS STANDARD TO COVER GLAZING FRAME.**

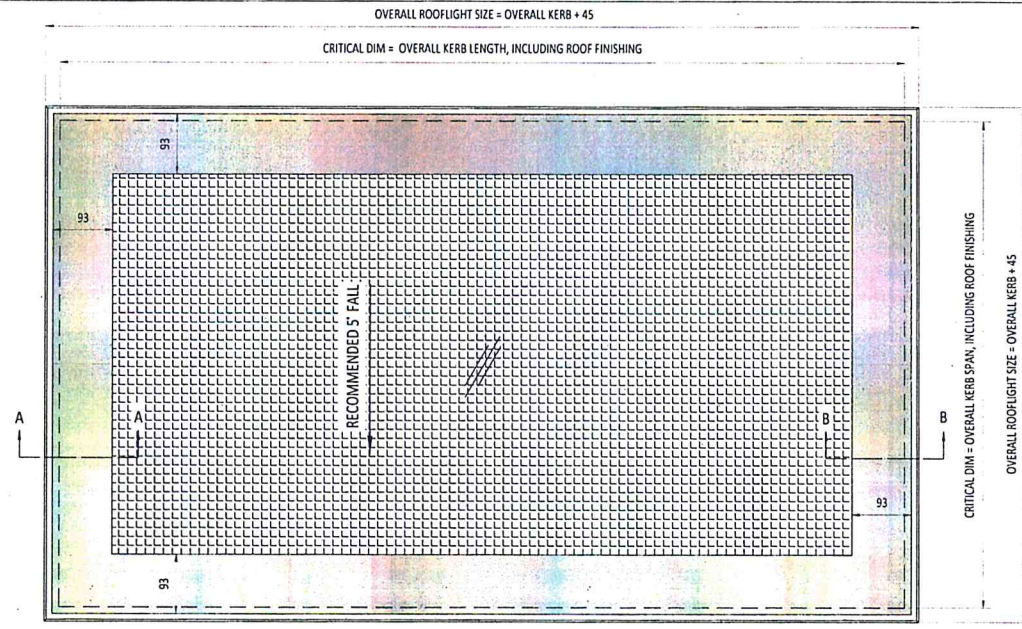
**DIMENSIONS SHOWN DOWN THE SLOPE.**

**DIMENSIONS SHOWN TO TOP OF GLASS ARE APPROXIMATE.**

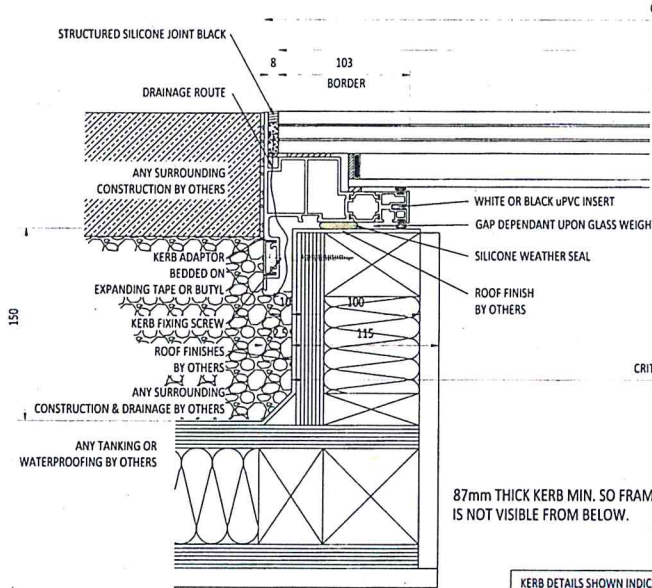
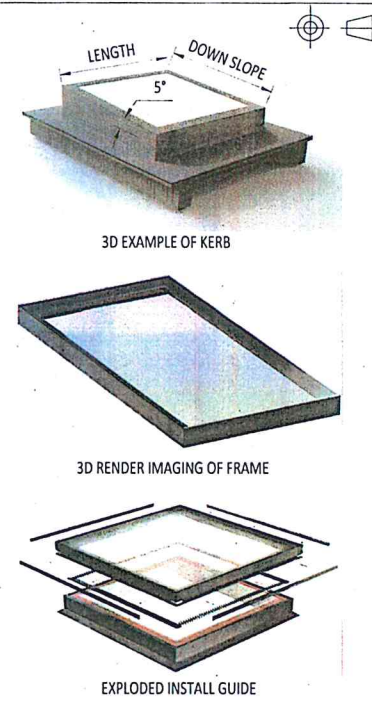
**SEALING TO SURROUNDING CONSTRUCTION BY OTHERS.**

**THE MANUFACTURER RECOMMENDS AN ANTI-SLIP COATING TO WALK ON GLASS. DATA SHEET AVAILABLE FROM:  
[HTTPS://WWW.ROOFGLAZE.CO.UK/RESOURCES/TECHNICAL-DATA-SHEETS/](https://www.roofglaze.co.uk/resources/technical-data-sheets/)**

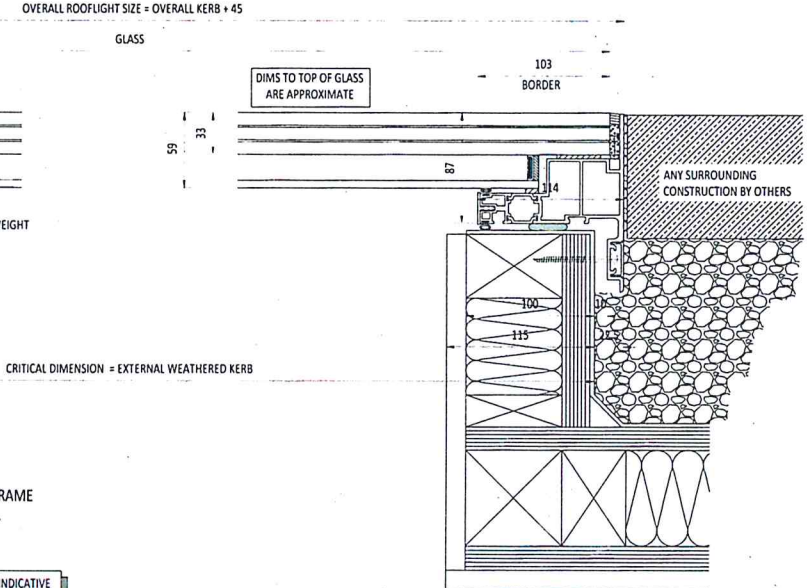
**WEIGHT FOR A 1m² UNIT:**  
 33/6 GLASS = 113 KG  
 39/6 GLASS = 128 KG  
 48/6 GLASS = 150 KG



**PLAN VIEW**  
True view on slope



**SECTION A-A**



**SECTION B-B**

**KERB DETAILS SHOWN INDICATIVE ONLY. DETAILED DESIGN BY OTHERS.**

**87mm THICK KERB MIN. SO FRAME IS NOT VISIBLE FROM BELOW.**

IF IN DOUBT ASK DO NOT SCALE	IT IS THE RESPONSIBILITY OF THE KERB DESIGNER TO ENSURE THE KERB WILL BE STRUCTURALLY ADEQUATE TO HOLD THE ROOFLIGHT. KERBS SHOWN ON THESE DRAWINGS ARE FOR ILLUSTRATION PURPOSES ONLY.	The manufacturer would advise an installation in a minimum pitch of 5° for rooflight units to remove water quickly. Where the product can be installed but without compliance to the warranty, the manufacturer cannot be held responsible for any excessive pooling of water to the surface of the rooflight, post installation, if installed without an adequate fall, larger units may require a greater fall. The final decision on amount of fall required must be made by the client and relayed to the installer.	THIS DRAWING MUST NOT BE COPIED OR PASSED TO A THIRD PARTY WITHOUT WRITTEN CONSENT FROM THE MANUFACTURER.	CHECKED A. PHILLIPS DATE 16-07-2020	TOLERANCE UNLESS OTHERWISE STATED ±5	MATERIAL ALUMINIUM + GLASS	Roofglaze Roofglaze Ltd. 11 Howard Road, Easton Sison, St Neots, Cambs, PE19 8ET Telephone 01455 474797 Fax 01455 474774	DRWING NO. RGR-WO-20-400	REV	
	DATE 16-07-2020	DRAWN D. PUGH	SCALE 1:2 & 1:4 @ A1	FINISH STANDARD POLYESTER POWDER COAT OPTIONS: RAL 7016 ANTHRACITE GREY, RAL 9005 BLACK, RAL 9010 WHITE, 30% GLOSS	TITLE FIXED DOUBLE GLAZED 33mm WALK ON FLATGLASS	DATE		SIGNED	CHECKED	DATE